

Product datasheet for **RG224117**

TESK2 (NM_007170) Human Tagged ORF Clone

Product data:

Product Type:	Expression Plasmids
Product Name:	TESK2 (NM_007170) Human Tagged ORF Clone
Tag:	TurboGFP
Symbol:	TESK2
Mammalian Cell Selection:	Neomycin
Vector:	pCMV6-AC-GFP (PS100010)
E. coli Selection:	Ampicillin (100 ug/mL)



[View online »](#)

ORF Nucleotide Sequence:

>RG224117 representing NM_007170
 Red=Cloning site Blue=ORF Green=Tags(s)

TTTTGTAATACGACTCACTATAGGGCGGCCGGAATTCGTCGACTGGATCCGGTACCGAGGAGATCTGCC
 GCC**CGGATCGCC**

ATGGATCGGAGCAAACCGAATTC AATTGCAGGATTCCTCCACGTGTGGAGCGTCTTGAAGAGTTTGAAG
 GAGGTGGTGGAGGAGAAGGAAATGTGAGCCAGGTGGGAAGAGTTTGGCCATCTTCGTATCGAGCTTAT
 AAGTGCCTTTTCCAGACTGACGCGTTTGGATGATTTACCTGTGAAAAAATAGGGTCTGGCTCTTTTCT
 GAAGTGTCAAGGTACGACACCGAGCTTCTGGTCAAGTATGAGTCTTAAAGATGAACACATTGAGCAGTA
 ACCGGGCAAACATGCTGAAAGAAGTACAGCTCATGAATAGACTCTCCCATCCCAACATCCTTAGGTTTAT
 GGGTGTATGTGTTTCAAGGACAATTGCATGCACCTACAGAGTATATCAACTCCGGGAACCTGGAACAG
 TTGCTAGACAGTAACCTGCATTTGCCTGGACTGTGAGGGTAAACTGGCCTATGACATAGCAGTGGGCC
 TCAGCTACCTTCACTTCAAAGGCATTTTTCATCGGGACCTCACATCTAAGAACTGCCTGATAAAGAGGGA
 TGAGAATGGTTACTCTGCAGTGGTACTGACTTTGGCCTGGCTGAGAAGATCCCCGATGTCAGCATGGGG
 AGTGAGAAAGCTGGCCGTGGTGGTTCCCCATTCTGGATGGCACCTGAGGTTCTCCGAGATGAGCCCTATA
 ATGAAAAGGCAGATGTGTTCTCTTATGGTATCATCCTCTGCGAGATCATCGCCCGCATCCAGGCCGATCC
 GGACTATCTTCCCGCACAGAGAATTTCCGGCTGGACTATGATGCTTCCAGCACATGGTGGGAGACTGT
 CCCCAGATTTTCTGCAACTTACTTTCAACTGCTGTAACATGGATCCCAAACCTGCGCCCATCTTTTGTGG
 AGATTGGGAAGACCTGGAGGAAATTTGAGCCGCTACAGGAAGAAGAGCAGGAGAGGGATAGGAAAGCT
 GCAGCCACAGCCAGGGGACTCTTGAGAAAGCACCTGGGGTGAAGCGACTAAGCTCACTGGATGACAAG
 ATCCCCACAAGTCAACATGCCAAGACGTACCATCTGGCTGTCTCGAAGCCAGTCAGATATCTTTTCCC
 GTAAGCCCCACGTACAGTGAAGTCTTGAGCCATACTACCGCCACGAGATGGTGTGCCCCGACCCC
 CAAAGTCAACCCTTTTAGTGCTCGCCAGGACCTCATGGGGGCAAGATCAAGTTTTTTGACCTGCCAGC
 AAGTCTGTCTCTCTGGTATTTGACCTGGATGCACCAGGGCCCGAACTATGCCCTGGCTGACTGGC
 AGGAGCCCTGGCCACCTATTCGCCGTGGCTTCTTGCCTGGTTCGCCTGAGTTCTTGATCAAGA
 GGCTTGTCCATTTGTGGCCGGGAAGAATCGCTATCTGATGGGCCCCACCACGCCTAAGTAGTCTCAAG
 TACAGAGTTAAGAGATCCCACCTTCCGGCATCTGCCCTACCAGCTGCTCAAGCCATGAGGCTATGG
 ACTGCTCCATTCTCCAGGAAGAAAATGGTTTTGGGTCCAGGCCCCAGGGACCAGTCCATGCCCTGCGGG
 TGCTTCTGAGGAGATGGAGGTAGAAGAAAGCCAGCAGGCTCAACTCCAGCCACCTTCTCCACCTCAGGC
 ATAGGCCTGCAAACCCAGGGAAGCAGGATGGG

AG**CGGACCG**ACGCGTACGCGGCCGCTCGAG - GFP Tag - GTTTAA

Protein Sequence:

>RG224117 representing NM_007170
 Red=Cloning site Green=Tags(s)

MDRSKRNSIAGFPPRVERLEEFEGGGGEGNVSQVGRVWPSSYRALISAFSRLTRLDDFTCEKIGSGFFS
 EVFKVRHRASGQVMALKMNTLSSNRANMLKEVQLMNRLSHPNILRFMGVCVHQQLHALTEYINSGNLEQ
 LLDSNLHLPWTVRVKLAYDIAVGLSYLHFKGIFHRDLTSKNCLIKRDENGYSAVVADFGLAEKIPDVSMG
 SEKLAVVGSPPFWMAPEVLRDEPYNEKADVFSYGIILCEIIARIQADPDYLPRTENFLDYDAFQHMVGDC
 PPDFLQLTFNCCNMDPKLRPSFVEIGKLEELSRQEEEQERDRKLQPTARGLLEKAPGVKRLSSLDK
 IPHKSPCPRRTIWLRSQSDIFSRKPPRTVSVLDPYYRPRDGAARTPKVNPFSARQDLMGGKIKFFDLPS
 KSVISLVFDLDAPGPGTMPLADWQEPLAPPIRRWRSLPGSPEFLHQEACPFVGREESLSDGPPRLSSLK
 YRVKEIPPFASALPAAQAHEAMDSCILQEENFGSRPQGTSPCPAGASEEMEVEERPAGSTPATFSTSG
 IGLQTQKQDG

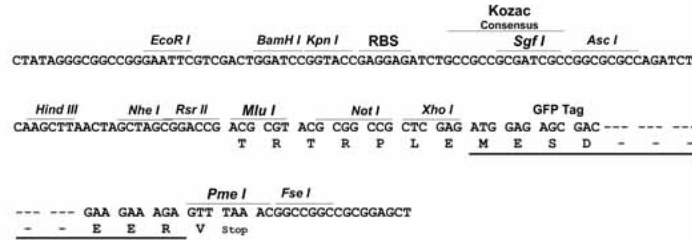
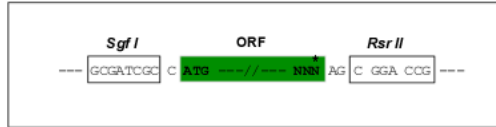
SGP**TRTRRLE** - GFP Tag - V

Restriction Sites:

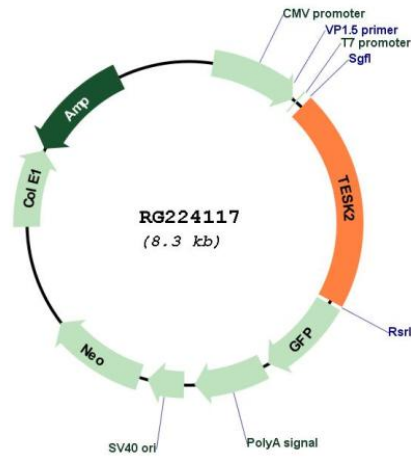
Sgfl-RsrII

Cloning Scheme:

Cloning sites used for ORF Shuttling:



Plasmid Map:



ACCN:

NM_007170

ORF Size:	1713 bp
OTI Disclaimer:	The molecular sequence of this clone aligns with the gene accession number as a point of reference only. However, individual transcript sequences of the same gene can differ through naturally occurring variations (e.g. polymorphisms), each with its own valid existence. This clone is substantially in agreement with the reference, but a complete review of all prevailing variants is recommended prior to use. More info
OTI Annotation:	This clone was engineered to express the complete ORF with an expression tag. Expression varies depending on the nature of the gene.
Components:	The ORF clone is ion-exchange column purified and shipped in a 2D barcoded Matrix tube containing 10ug of transfection-ready, dried plasmid DNA (reconstitute with 100 ul of water).
Reconstitution Method:	<ol style="list-style-type: none">1. Centrifuge at 5,000xg for 5min.2. Carefully open the tube and add 100ul of sterile water to dissolve the DNA.3. Close the tube and incubate for 10 minutes at room temperature.4. Briefly vortex the tube and then do a quick spin (less than 5000xg) to concentrate the liquid at the bottom.5. Store the suspended plasmid at -20°C. The DNA is stable for at least one year from date of shipping when stored at -20°C.
RefSeq:	NM_007170.3
RefSeq Size:	3093 bp
RefSeq ORF:	1716 bp
Locus ID:	10420
UniProt ID:	Q96S53
Cytogenetics:	1p34.1
Domains:	pkinase, TyrKc, S_TKc
Protein Families:	Druggable Genome, Protein Kinase
Gene Summary:	This gene product is a serine/threonine protein kinase that contains an N-terminal protein kinase domain that is structurally similar to the kinase domains of testis-specific protein kinase-1 and the LIM motif-containing protein kinases (LIMKs). Its overall structure is most related to the former, indicating that it belongs to the TESK subgroup of the LIMK/TESK family of protein kinases. This gene is predominantly expressed in testis and prostate. The developmental expression pattern of the rat gene in testis suggests an important role for this gene in meiotic stages and/or early stages of spermiogenesis. Alternative splicing results in multiple transcript variants. [provided by RefSeq, Mar 2016]