

Product datasheet for **RG224086**

CEACAM21 (NM_033543) Human Tagged ORF Clone

Product data:

Product Type: Expression Plasmids
Product Name: CEACAM21 (NM_033543) Human Tagged ORF Clone
Tag: TurboGFP
Symbol: CEACAM21
Synonyms: CEACAM3; R29124_1
Mammalian Cell Selection: Neomycin
Vector: pCMV6-AC-GFP (PS100010)
E. coli Selection: Ampicillin (100 ug/mL)
ORF Nucleotide Sequence: >RG224086 representing NM_033543
 Red=Cloning site Blue=ORF Green=Tags(s)

TTTTGTAATACGACTCACTATAGGGCGGCCGGAATTCGTCGACTGGATCCGGTACCGAGGAGATCTGCC
 GCC**CGATCGCC**

ATGGGGCCCCCTCAGCTTGTCCCCACAGAGAATGCATCCCCTGGCAGGGGCTCTTGCTCACAGCCTCAC
 TTTTAACTTTCTGGAACGCACCCACCACTGCCTGGCTCTTTATTGCATCAGCGCCCTTTGAAGTTGCTGA
 AGGGGAGAATGTTTCATCTCTGTGTTTATCTGCCGAGAATCTTTACAGCTATGGCTGGTACAAAGG
 AAAACGGTGGAGCCCAACCAGCTAATCGCAGCATATGTAATAGACTCACGTTAGGACTCCAGGGCCTG
 CATAACGCGGTCGAGAGACAATATCACCCAGTGGAGATCTGCATTCCAGAACGTCACCCTAGAGGACAC
 GGGATACTACAACCTACAAGTCACATACAGAAATTCTCAGATTGAACAGGCATCTCACCATCTCCGTGTA
 TACGAGTCAGTGGCTCAGCCCTCCATCCAAGCCAGCAGCACACAGTACAGAGAAGGGCTCCGTGGTCC
 TGACCTGCCACACAAATAACACTGGAACCTCTTCCAGTGGATTTTCAACAACCAGCGTCTGCAGGTCAC
 GAAGAGGATGAAGCTGTCCTGGTTAAACCATGTGCTCACCATAGACCCCATCAGGCAGGAGGACGCTGGG
 GAGTATCAGTGTGAGGTCTCAACCCAGTCAGTCCAACAGGAGCGACCCCTCAAGTGACTGTAAAT
 CAGATGACAACACTCTAGGCATCCTGATCGGGTCTGGTTGGGAGTCTTCTGGTGGCTGCACCTTGTGTG
 TTTCTGCTCTCCGAAAACTGGCAGGGCCAGCGATCAGAGTACTTCAGGGAGCAGCAGCCCCAGCC
 TCCACCCCGCCATGGACCCTTGACAGCTCCATCTCC

ACGCGTACGCGGCCGCTCGAG - GFP Tag - GTTTAA



[View online »](#)

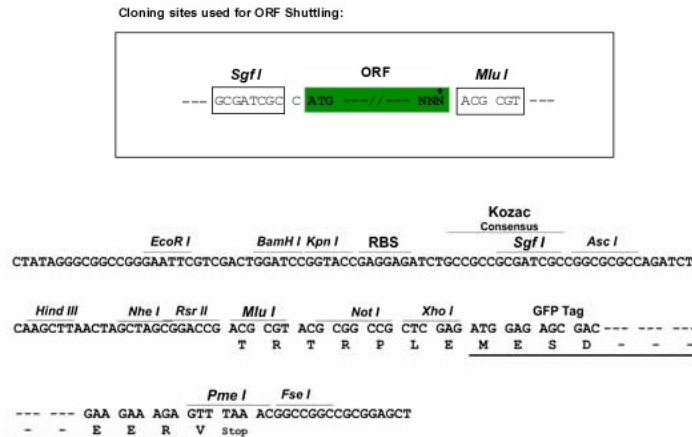
Protein Sequence: >RG224086 representing NM_033543
Red=Cloning site Green=Tags(s)

MGPPSACPHRECIPWQGLLLTASLLTFWNPATTAWLFIASAPFEVAEGENVHLSVVYLPENLYSYGWYKG
 KTVEPNQLIAAYVIDTHVRTPGPAYSGRETISPGLHFQNVLTLEDTGYYNLQVTVRNSQIEQASHHLRV
 YESVAQPSIQASSTTVTEKGSVVLTCHTNNTGTSFQWIFNNQRLQVTKRMKLSWFNHVLTIDPIRQEDAG
 EYQCEVSNPVSSNRSDPLKLTVKSDNTLGLIGVLVGSLLVAALVCFLLLRKTGRASDQSDFREQQPPA
 STPGHGPSDSSIS

TRTRPLE - GFP Tag - V

Restriction Sites: SgfI-MluI

Cloning Scheme:



ACCN: NM_033543

ORF Size: 879 bp

OTI Disclaimer: The molecular sequence of this clone aligns with the gene accession number as a point of reference only. However, individual transcript sequences of the same gene can differ through naturally occurring variations (e.g. polymorphisms), each with its own valid existence. This clone is substantially in agreement with the reference, but a complete review of all prevailing variants is recommended prior to use. [More info](#)

OTI Annotation: This clone was engineered to express the complete ORF with an expression tag. Expression varies depending on the nature of the gene.

Components: The ORF clone is ion-exchange column purified and shipped in a 2D barcoded Matrix tube containing 10ug of transfection-ready, dried plasmid DNA (reconstitute with 100 ul of water).

Reconstitution Method:

1. Centrifuge at 5,000xg for 5min.
2. Carefully open the tube and add 100ul of sterile water to dissolve the DNA.
3. Close the tube and incubate for 10 minutes at room temperature.
4. Briefly vortex the tube and then do a quick spin (less than 5000xg) to concentrate the liquid at the bottom.
5. Store the suspended plasmid at -20°C. The DNA is stable for at least one year from date of shipping when stored at -20°C.

RefSeq: [NM_033543.2](#), [NP_291021.2](#)

RefSeq Size: 1352 bp

RefSeq ORF: 879 bp

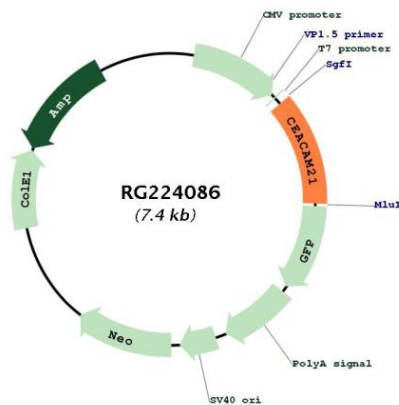
Locus ID: 90273

UniProt ID: [Q3KPI0](#)

Cytogenetics: 19q13.2

Protein Families: Transmembrane

Product images:



Circular map for RG224086