

## Product datasheet for **RG224083**

### NFAT5 (NM\_138713) Human Tagged ORF Clone

#### Product data:

Product Type:	Expression Plasmids
Product Name:	NFAT5 (NM_138713) Human Tagged ORF Clone
Tag:	TurboGFP
Symbol:	NFAT5
Synonyms:	NF-AT5; NFATL1; NFATZ; OREBP; TONEBP
Mammalian Cell Selection:	Neomycin
Vector:	pCMV6-AC-GFP (PS100010)
E. coli Selection:	Ampicillin (100 ug/mL)
ORF Nucleotide Sequence:	>RG224083 representing NM_138713 Red=Cloning site Blue=ORF Green=Tags(s)

TTTTGTAATACGACTCACTATAGGGCGGCCGGAATTCGTCGACTGGATCCGGTACCGAGGAGATCTGCC  
GCC**CGATCGCC**

ATGCCCTCGGACTTCATCTCATTGCTCAGCGCGGACCTAGACCTGGAATCGCCCAAGTCCCTCTACTCGC  
GAGATTCTCTGAAGTTACACCCATCACAGAATTTTCATAGAGCTGGACTATTGGAAGAATCTGTCTATGA  
TCTTCTCCCAAAGGAGTTACAGTTACCTCCATCTAGAGAAACATCTGTAGCATCAATGAGTCAGACAAGC  
GGTGGTGAGGCAGGCTCGCTCCTCCAGCTGTTGTTGCTGCTGATGCTTCTTCAGCTCCCTCCTTCTCT  
CCATGGGCGGTGCTTGCAGCTCCTTACCACCTCTCCAGCCCTACCATTATTCTACCTCAGTCACCGA  
CAGCAAGGCTATGCAAGTGGAGAGCTGCTCCTCAGCCGTGGGGTAAGTAACAGAGGGTAAGTGAAAAG  
CAGTTAACCAAGTAACACAGTTCAGCAGCATCCATCAACACCGAAGAGGCACACAGTCTTGTACATCTCAC  
CACCACCTGAGGACTTGCTGGATAACAGTCGGATGTCCTGCCAGGATGAGGGGTGTGGATTGGAATCTGA  
GCAGAGCTGCAGTATGTGGATGGAGGATCCCCCTCCAATTGAGTAACATGAGCACCAGTTCCTACAAT  
GATAACACTGAGGTACCTCGTAAATCACGAAAACGAAATCCAAAGCAGAGGCCGGGGTCAAACGACGAG  
ATTGTGAAGAATCTAATATGGATATATTTGATGCCGACAGTGCCAAAGCACCTCACTATGTGCTTTCTCA  
GCTTACCACGGACAACAAAGGCAACTCAAAGCGGAAATGGAACATTGGAACCAAAAAGGAACTGGA  
GTAAAGAAGAGCCCTATGTTGTGTGGACAATATCCTGTTAAAAGTGAGGGAAAGGAGCTGAAGATAGTTG  
TACAACCTGAGACACAGCACCGAGCTCGGTACCTGACTGAGGGCAGCCGTGGCTCAGTGAAGATAGAAG  
ACAGCAAGGCTTTCTACAGTAAAGCTGGAAGGCCATAATGAACCTGTAGTGTGCAAGTGTGTTGGGC  
AACGACTCTGGACGAGTGAACACATGGATTTTATCAGGCCTGCAGAGTAACTGGACGAAATACAACCTC  
CTTGCAAAGAAGTGGACATTGAAGGCACTACTGTTATAGAAGTCGGCCTTGATCCTAGCAACAACATGAC  
ACTGGCGGTGACTGCGTAGGGATATTGAAATTGAGGAATGCTGATGTCGAAGCCAGAATAGGAATTGCT  
GGTTCCAAGAAGAAAAGCACTCGTGCCAGATTGGTTTTTCGAGTTAATATCATGAGGAAAGATGGCTCCA  
CTTTGACTGCAAAACACCTCTTCTCCAATTTGTGTACTCAGCCAGCAGGAGTGCCAGAAATCTTAAA  
GAAAAGCTTGCATAGCTGTTTCAGTGAAAGGAGAAGAAGTGTTTTTAATCGGCAAGAAGTCTTCTGAAA



[View online »](#)

GGAACAAAGTTATTTTCCAAGAAAATGTTTCTGATGAAAACCTTGGAAGTCAGAAGCTGAAATTGATA  
TGGAACTATTTTCATCAGAATCATCTTATTGTGAAGGTTCCCTCATCATGACCAACATATAACTTTGCC  
TGTGTCAGTGGGAATATATGTAGTGACAAATGCTGGAAGATCTCATGATGTTCAACCATTCACTTACACT  
CCAGACCCAGCAGCAGCTGGTGCCTTTGAATGTAATGTGAAGAAGGAAATATCTAGTCCAGCAAGACCTT  
GCTCTTTTGAAGAGGCCATGAAAGCAATGAAAACACTACTGGATGTAATTTAGATAAGGTAATATTTATCCC  
TAATGCCCTGATGACTCCACTCATACCAAGCAGTATGATTAAGAGTGAAGATGTTACTCCAATGGAAGTA  
ACAGCAGAAAAAAGATCTCCACTATTTTTAAGACTACAAGTCTGTTGGATCAACTCAGCAAAACATTAG  
AAAACATCTCAAACATAGCAGGAAATGGCTCTTTTTTCATCACCATCATCTCCCACCTACCTTCTGAAAA  
TGA AAAACAGCAGCAGATTTCAGCCCAAGGCATACAACCCAGAGACCTTGACAACCTATTCAAACCCAGGAC  
ATCTCACAGCCTGGTACTTTTCCAGCAGTTTCTGCTTCTAGTCAGCTGCCCAACAGCGATGCACTATTGC  
AGCAGGCTACACAGTTTCAGACAAGAGAAAACACTCAGTCTAGAGAGATATTACAGTCAGATGGTACAGTGGT  
TAATTTGTCACAACTGACTGAGGCATCACAACAACAGCAGCAGTCACTACAAGAACAAGCACAGACT  
TTACAGCAGCAGATTTTCATAAATTTTTCCATCACC AATAGTGTGAGTCAGCTT CAGAATACTATTC  
AGCAGCTGCAAGCAGGGAGTTTACAGGCAGTACTGCTAGTGGCAGCAGTGG AAGTGTGACTTGGTCCA  
ACAAGTTTTAGAGGCACAGCAGCAGTTATCTTCAGTTTTATTTCTGCTCCAGATGGTAATGAGAATGTT  
CAAGAGCAGCTTAGTGCAGATATTTTTCAACAAGTCAGTCAAATTCAGAGTGGTGT AAGCCCTGGAATGT  
TTTTCTCAACAGAGCCAACAGTCCATACCAGACCAGATAATTTATTACCTGGAAGAGCTGAAAGTGTTC A  
TCCACAGTCTGAAAACACGTTATCTAATCAACAGCAGCAGCAGCAGCAACAGCAAGTATGGAATCT  
TCAGCCGCAATGGTGATGGAGATGCAACAGAGTATCTGCCAGGCAGCTGCCCAGATTCAGTCAGAGTTAT  
TCCCTTCAACTGCTTCAGCAAATGGAACCTTCAGCAATCGCCAGTTTACCAGCAGACTTCTCACATGAT  
GAGTGCATTGTCTACCAATGAGGATATGCAAATGCAGTGTGAATGTTTTCTTCTCCTCCTGCAGTTTCT  
GGAAATGAAACTTCTACAACCTACCACACAGCAGGTTGCAACCCCTGGCACTACCATGTTTCAGACATCAA  
GTTCAGGAGATGGAGAAGAAACTGGAACAACAAGCAAACAGATTCAGAACAGTGTCTTTCAGACATGGT  
CCAAATGCAACATAGTGGGGACAATCAACCTCAAGTTAACCTTTTTTCATCCACAAAAAGTATGATGAGT  
GTTCAGAATAGTGGTACCAACAACAAGGTAATGGTTTATTCCAGCAAGGGAATGAGATGATGCTACTTC  
AATCTGGAATTTTTTGCAGCAGTCTTCTCATTACAGGCCCAACTTTTTTCATCCTCAAAAATCCTATTGC  
CGATGCTCAGAACCTTTCCAGGAAACTCAAGTTCTCTCTTTTCATAGTCCAAATCCTATTGTCCACAGT  
CAGACTTCTACAACCTCCTGAAACAAATGCAGCCTCCAATGTTTCACTCTCAAAGTACCATTGCTGTGT  
TACAGGGCTCTTCAGTTCCTCAAGACCAGCAGTCAACCAACATATTTCTTCCAGAGTCCCATGAATAA  
TCTTCAGACTAACACAGTAGCCCAAGAAGCATTTTTTGCAGCACCGAACCAATTTCTCCACTTCAGTCA  
ACATCAAACAGTGAACAACAAGCTGCTTTCCAACAGCAAGCTCCAATATCACACATCCAGACTCCTATGC  
TTTCCCAAGAACAGGCACAACCCCGCAGCAGGGTTTATTTTCAGCCTCAGGTGGCCCTGGGCTCCCTTCC  
ACCTAATCCAATGCCTCAAAGCCAACAAGGAACCATGTTCCAGTCACAGCACTCAATAGTTGCCATGCAG  
AGTAACTCTCCATCCCAGGAACAGCAGCAGCAGCAACAGCAGCAGCAACAGCAGCAGCAACAACAAC  
AGAGCATTTTTATTCAGTAATCAGAATACCATGGCTACAATGGCGTCTCCAAAGCAACCACCACAAACAT  
GATATTC AACCCAAATCAAAAATCCAATGGCTAATCAGGAGCAACAGAACCAGTCAATTTTTACCAACAA  
AGTAACATGGCCCAATGAATCAAGAGCAACAGCCCATGCAATTCAGAGTCAGTCCACAGTTTCTCTCAC  
TTCAGAACCAGGTCCTACCCAGTGG AATCATCACAGACCCCTTGTCCATAGCTCTCCTCAGATTCA  
GTTGGTACAAGGGTCACCTAGTTCTCAAGAGCAGCAAGTAACTCTTTCTATCTCCAGCATCCATGTCT  
GCCTTGACAGACCAGTATAAATCAACAAGATATGCAACAGTCTCCTCTTTATTTCCCTCAGAACAAACATGC  
CTGGAATTC AAGGAGCCACATCTTCGCCTCAACCACAGGCTACTTTATTTCAACAACAGCAGGAGGCAC  
AATGAACCAACTGCAGAATTCTCCTGGCTCATCTCAGCAGACATCAGGAATGTTCTTATTTGGCATTCAA  
AATAACTGTAGTCAGTTTTAACCTCTGGACCAGCTACATTGCCTGATCAGTTGATGGCCATAAGTCAGC  
CAGGCCAACCAAAAACGAGGGCCAGCCACCTGTGACAACACTTCTTTCTCAGCAAATGCCAGAGAATTC  
TCCACTGGCATCCTCTATAAACACCAACCAGAACATCGAAAAGATTGATTTGCTTGTTCATTGCAAAAAC  
CAAGGGAACAACCTGACTGGCTCCTT

ACGCGTACGCGGCCGCTCGAG - GFP Tag - GTTTAA

**Protein Sequence:** >RG224083 representing NM\_138713  
 Red=Cloning site Green=Tags(s)

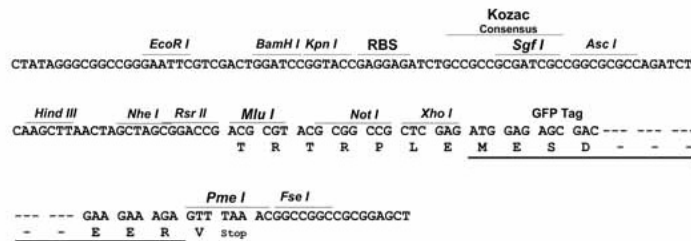
MPSDFISLLSADLDLESPLKSLYSRDSLKLHPSQNFHRAGLLEESVYDLLPKELQLPPSRETSVASMSQTS  
 GGEAGSPPPAVVAADASSAPSSSSMGGACSSFTTSSSPTIYSTSVTDSKAMQVESCSSAVGVSNRNVSEK  
 QLTSENTVQHPSTPKRHTVLVISPPPEDLLDNSRMSCQDEGCLESEQSCSMWMEDESPSNFSNMSTSSYN  
 DNTEVPRKSRKRNPQRPVGVKRRDCEESNMDIFDADSAKAPHYVLSQLTTDNKGNKAGNGTLENQKGTG  
 VKKSPMLCGQYPVKSEGKELKIVVQPETQHRARYLTEGSRGSKVDRTQQGFPTVKLEGHNEPVVLQVFG  
 NDSGRVPHGFYQACRVTRNTTPCKEVDIEGTTVIEVGLDPSNNMTLAVDCVGLKLRNADVEARIGIA  
 GSKKKSTRARLVFRVNIIMRKDGSTLTLQTPSSPILCTQPAGVPEILKSLHSCSVKGEEVFLIGKNFLK  
 GTKVIFQENVSDENSWKSEAEIDMELFHQNLIVKVPYHDQHITLPSVGIYVVTNAGRSHDVQPFTYT  
 PDPAAGALNVNVKKEISSPARPCSFEEAMKAMKTTGCNLDKVNIPNALMTPLIPSSMIKSEDVTPMEV  
 TAEKRSTIFKTTKSVGSTQQTLENI SNIAGNGSFSSPSSHLPSENEKQQIQPKAYNPETLTTIQTQD  
 ISQPGTFPAVSASSQLPNSDALLQATQFQTRETQSREILQSDGTVVNLSQLTEASQQQQSPLQEQAQT  
 LQQQISSNIFPSPNSVSQLQNTIQQLQAGSFTGSTASGSSGVDLVQQVLEAQQQLSSVLF SAPDGNENV  
 QEQLSADIFQQVSIQSGVSPGMFSSTPTVHTRPDNLLPGRAESVHPQSENTLSNQQQQQQQQQVMES  
 SAAMVMEQQSICQAAAQIQSELPSTASANGNLQQSPVYQQTSHMMSALSTNEDMQMQCELFSSPPAVS  
 GNETSTTTTQQVATP GTTTFQTSSSGDGEETGTQAKIQNSVFQTMVQMHSQDNQPQVNLFSSTKSMMS  
 VQNSGTQQQGNLFGQQGNEMMSLQSGNFLQQSSHSQAQLFHPQNP IADAQNL SQETQGS LFHSPNP IVHS  
 QTSTTSSEQMPPMFHSQSTIAVLQGSVPDQDQSTNIFLSQSPMNNLQNTVAQEAF AAPNSISPLQS  
 TSNSEQQA AFQQQAPISHIQTPMLSQEQAPPPQGLFQPQVALGSLPPNPMPQSQQGTMFQSQHSIVAMQ  
 SNSPSEQEQQQQQQQQQQQQQQSILFSNQNTMATMASPKQPPPNMIFNPNQNP MANQEQQNQSIFHQQ  
 SNMAPMNQEQQPMQFQSQSTVSSLQNPQPTQSESSQTPLFHSSPQIQLVQGSPPSQEQVTLFLSPASMS  
 ALQTSINQQDMQSPLYSPQNNMPCIQGATSSPQPQATLFHNTAGGTMNQLQNSPSSSQQTSGMFLFGIQ  
 NNCSQLLTSGPATLPDQLMAISQPGQPQNEGQPPVTTLLSQQMPENSPLASSINTNQNI EKIDLLVSLQN  
 QGNLGTGSF

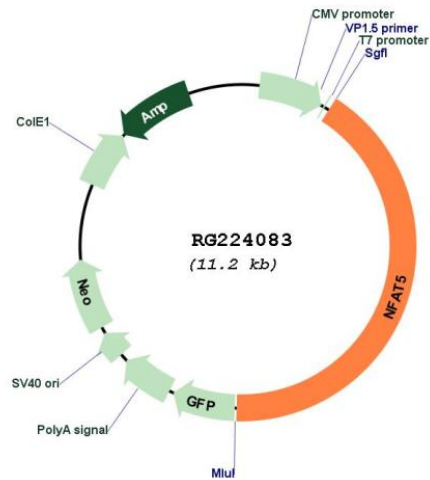
TRTRPLE - GFP Tag - V

**Restriction Sites:** SgfI-MluI

**Cloning Scheme:**

Cloning sites used for ORF Shutting:



**Plasmid Map:**


<b>ACCN:</b>	NM_138713
<b>ORF Size:</b>	4647 bp
<b>OTI Disclaimer:</b>	The molecular sequence of this clone aligns with the gene accession number as a point of reference only. However, individual transcript sequences of the same gene can differ through naturally occurring variations (e.g. polymorphisms), each with its own valid existence. This clone is substantially in agreement with the reference, but a complete review of all prevailing variants is recommended prior to use. <a href="#">More info</a>
<b>OTI Annotation:</b>	This clone was engineered to express the complete ORF with an expression tag. Expression varies depending on the nature of the gene.
<b>Components:</b>	The ORF clone is ion-exchange column purified and shipped in a 2D barcoded Matrix tube containing 10ug of transfection-ready, dried plasmid DNA (reconstitute with 100 ul of water).
<b>Reconstitution Method:</b>	<ol style="list-style-type: none"> <li>1. Centrifuge at 5,000xg for 5min.</li> <li>2. Carefully open the tube and add 100ul of sterile water to dissolve the DNA.</li> <li>3. Close the tube and incubate for 10 minutes at room temperature.</li> <li>4. Briefly vortex the tube and then do a quick spin (less than 5000xg) to concentrate the liquid at the bottom.</li> <li>5. Store the suspended plasmid at -20°C. The DNA is stable for at least one year from date of shipping when stored at -20°C.</li> </ol>

RefSeq:	<a href="#">NM_138713.4</a>
RefSeq Size:	13307 bp
RefSeq ORF:	4650 bp
Locus ID:	10725
UniProt ID:	<a href="#">O94916</a>
Cytogenetics:	16q22.1
Protein Families:	Druggable Genome, Transcription Factors
Protein Pathways:	Axon guidance, B cell receptor signaling pathway, Natural killer cell mediated cytotoxicity, T cell receptor signaling pathway, VEGF signaling pathway, Wnt signaling pathway
Gene Summary:	<p>The product of this gene is a member of the nuclear factors of activated T cells family of transcription factors. Proteins belonging to this family play a central role in inducible gene transcription during the immune response. This protein regulates gene expression induced by osmotic stress in mammalian cells. Unlike monomeric members of this protein family, this protein exists as a homodimer and forms stable dimers with DNA elements. Multiple transcript variants encoding different isoforms have been found for this gene. [provided by RefSeq, Jul 2008]</p>