

Product datasheet for **RG224079**

CLUL1 (NM_199167) Human Tagged ORF Clone

Product data:

| | |
|---------------------------|--|
| Product Type: | Expression Plasmids |
| Product Name: | CLUL1 (NM_199167) Human Tagged ORF Clone |
| Tag: | TurboGFP |
| Symbol: | CLUL1 |
| Synonyms: | RA337M |
| Mammalian Cell Selection: | Neomycin |
| Vector: | pCMV6-AC-GFP (PS100010) |
| E. coli Selection: | Ampicillin (100 ug/mL) |



[View online »](#)

ORF Nucleotide Sequence:

>RG224079 representing NM_199167
 Red=Cloning site Blue=ORF Green=Tags(s)

TTTTGTAATACGACTCACTATAGGGCGGCCGGAATTCGTCGACTGGATCCGGTACCGAGGAGATCTGCC
 GCC**CGGATCGCC**

ATGAAGCCGCCACTCTTGGTGTATTATTGTGTGTCTGCTGTGGTTGAAAGACAGTCACTGCGCACCCACTT
 GGAAGGACAAAACCTGCTATCAGTGAAAACCTGAAGAGTTTTTCTGAGGTGGGGGAGATAGATGCAGATGA
 AGAGGTGAAGAAGGCTTTGACTGGTATTAAAGCAATGAAAATCATGATGGAAAGAAAAGAGAAGGAACAC
 ACCAATCTAATGAGCACCTGAAGAAATGCAGAGAAGAAAAGCAGGAGGCCCTGAAAATTCTGAATGAAG
 TTCAAGAACATCTGGAGGAAGAAGAAAGGCTATGCCGGGAGTCTTTGGCAGATTCCTGGGGTGAATGCAG
 GTCTTGCCTGGAAAATACTGCATGAGAATTTATACAACCTGCCAACCTAGCTGGTCCTCTGTGAAAAAT
 AAGATTGAACGGTTTTTCAGGAAGATATATCAATTTCTATTTCTTTCCATGAAGATAATGAAAAGATC
 TCCCCATCAGTAAAAGCTCATTGAGGAAGATGCACAATTGACCCAAATGGAGGATGTGTTCCAGCCAGTT
 GACTGTGGATGTGAATTCCTCTTTAACAGGAGTTTTAACGTCTTCAGACAGATGCAGCAAGAGTTTGAC
 CAGACTTTTCAATCACATTTTATATCAGATACAGACCTAACTGAGCCTTACTTTTTTCCAGCTTTCTCTA
 AAGAGCCGATGACAAAAGCAGATCTTGACAAATGTTGGGACATCCCAACTTCTTCCAGCTGTTTTGTAA
 TTTTCAGTGTCTCTATTTATGAAAGTGTCAAGTAAACAATTACTAAGATGCTGAAGGCAATAGAAGATTTA
 CAAAACAAGACAAGCTCCTGACCACGGAGGCCCTGATTTCAAAGATGTTACCTGGGCAGGACAGAGGAC
 TGTGTGGGAACTTGACCAGAAATTTGTCAAGATGTTTCAAATTTTCATGAAAAATGCCAAAATGTCAGGC
 TCACCTATCTGAAGACTGTCTGATGTACCTGCTGTCACACAGAATTAGACGAGGCGATCAGGTTGGTC
 AATGTATCCAATCAGCAGTATGGCCAGATTTCCAGATGACCCGGAAGCACTTGGAGGACACCCGCATC
 TGGTGGAGAAGATGAGAGGGCAATTTGGCTGGGTGTCTGAATGGCAAACCAGGCCAGAAAACAGAGAT
 CATCTTTAATCAATACAGGTAGTTCCAAGGATTCATGAAGGAAATATTTCCAAAACAAGATGAAAACAATG
 ATGACAGACTTAAGCATTCTGCCTTCTCTAATTTCACTCAAGATCCCTCTTGAAGAAAGTGTGAGA
 GTTCTAACTTCATTGGCTACGTAGTGGCAAAGCTCTACAGCATTTTAAGGAACATTTTAAACCTGG

ACGCGTACGCGGCCGCTCGAG - GFP Tag - GTTTAA

Protein Sequence:

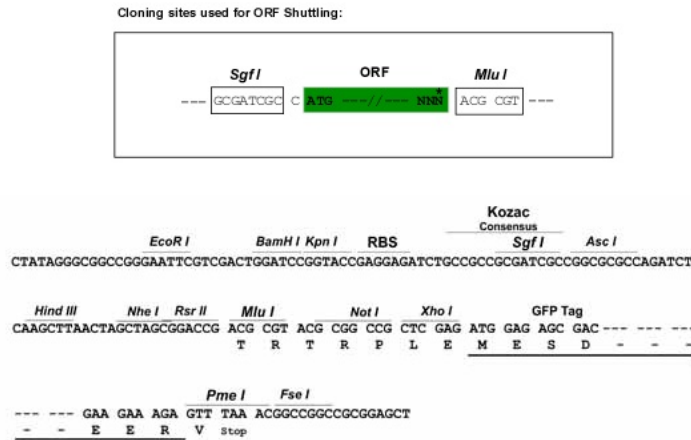
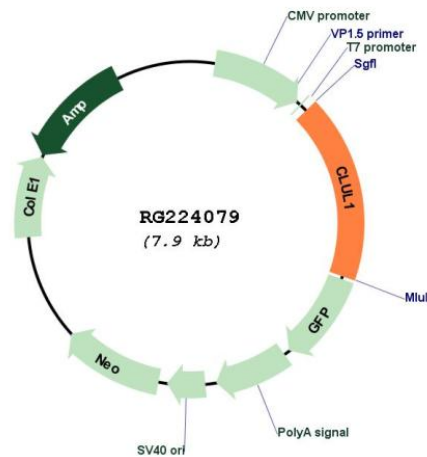
>RG224079 representing NM_199167
 Red=Cloning site Green=Tags(s)

MKPPLLVFIVCLLWLKDSHCAPTWKDKTAISENLKSFSEVGEIDAEVKKALTGIKQMKIMMERKEKEH
 TNLMSTLKKCREEKQEALKLLNEVQEHLEEEERLCRESLADSWGECRSCLENNCMRIYTTCPSSWSVKN
 KIERFFRKIYQFLFPFHEDNEKDLPISEKLIIEEDAQLTQMEDVFSQLTVDVNSLFNRSFNVFRQMQQEFD
 QTFQSHFISDSDLTEPYFFPAFSKEPMTKADLEQCWDIPNFFQLFCNFSVSIYESVSETITKMLKAIEDL
 PKQDKAPDHGGLISKMLPGQDRGLCGELDQNL SRCFKFHEKCQKQAHLS EDCPDV PALHTELDEAIRLV
 NVSNQQYGQILQMTRKHLEDYALVEKMRGQFGWVSEL ANQAPETE IIFNSIQVVPRIHEGNI SKQDET
 MTDLSILPSSNFTLKIPLLEESAESSNF IGYVAKALQHFKEHFKTW

TRTRPLE - GFP Tag - V

Restriction Sites:

Sgfl-MluI

Cloning Scheme:

Plasmid Map:


ACCN: NM_199167

ORF Size: 1398 bp

OTI Disclaimer: The molecular sequence of this clone aligns with the gene accession number as a point of reference only. However, individual transcript sequences of the same gene can differ through naturally occurring variations (e.g. polymorphisms), each with its own valid existence. This clone is substantially in agreement with the reference, but a complete review of all prevailing variants is recommended prior to use. [More info](#)

OTI Annotation: This clone was engineered to express the complete ORF with an expression tag. Expression varies depending on the nature of the gene.

| | |
|-------------------------------|---|
| Components: | The ORF clone is ion-exchange column purified and shipped in a 2D barcoded Matrix tube containing 10ug of transfection-ready, dried plasmid DNA (reconstitute with 100 ul of water). |
| Reconstitution Method: | <ol style="list-style-type: none">1. Centrifuge at 5,000xg for 5min.2. Carefully open the tube and add 100ul of sterile water to dissolve the DNA.3. Close the tube and incubate for 10 minutes at room temperature.4. Briefly vortex the tube and then do a quick spin (less than 5000xg) to concentrate the liquid at the bottom.5. Store the suspended plasmid at -20°C. The DNA is stable for at least one year from date of shipping when stored at -20°C. |
| RefSeq: | <u>NM_199167.1</u> , <u>NP_954636.1</u> |
| RefSeq Size: | 1877 bp |
| RefSeq ORF: | 1401 bp |
| Locus ID: | 27098 |
| UniProt ID: | <u>Q15846</u> |
| Cytogenetics: | 18p11.32 |
| Protein Families: | Secreted Protein |