

Product datasheet for **RG224066**

TLE3 (NM_005078) Human Tagged ORF Clone

Product data:

Product Type:	Expression Plasmids
Product Name:	TLE3 (NM_005078) Human Tagged ORF Clone
Tag:	TurboGFP
Symbol:	TLE3
Synonyms:	ESG; ESG3; GRG3; HsT18976
Mammalian Cell Selection:	Neomycin
Vector:	pCMV6-AC-GFP (PS100010)
E. coli Selection:	Ampicillin (100 ug/mL)



[View online »](#)

ORF Nucleotide Sequence:

>RG224066 representing NM_005078
 Red=Cloning site Blue=ORF Green=Tags(s)

TTTTGTAATACGACTCACTATAGGGCGGCCGGGAATTCGTCGACTGGATCCGGTACCGAGGAGATCTGCC
 GCC**CGGATCGCC**

ATGTATCCGCAGGGCAGACATCCGGCTCCCATCAACCCGGGCAGCCGGATTTAAATTCACGGTGGCTG
 AGTCTTGTGACAGGATCAAAGACGAATTCAGTTCCTGCAAGCTCAGTATCACAGCCTCAAAGTGGAGTA
 CGACAAGCTGGCAAACGAGAAGACGGAGATGCAGCGCCATTATGTGATGTACTATGAGATGCCTATGGC
 TTGAACATTGAAATGCACAAGCAGACAGAGATTGCGAAGAGACTGAACACAATTTAGCACAGATCATGC
 CTTTCCTGTACAAAGAGCACCAGCAGCAGGTGGCGCAGGCAGTGGAGCGCGCAAGCAGGTACCATGAC
 GGAGCTGAACGCCATCATCGGCAGCAGCAGCTCCAGGCGCAGCACCTCTCCCATGCCACACAGGCCCC
 CCGGTCCAGTTGCCACCCACCCGTCAGGTCTCCAGCCTCCAGGAATCCCCCAGTGACAGGGAGCAGCT
 CCGGGCTGCTGGCACTGGCGCCCTGGGCAGCCAGGCCCATCTGACGGTGAAGGATGAGAAGAACCACCA
 TGAAGTGCATCACAGAGAGAGAGATCCAGTGCGAATAACTCTGTGTACCCTCGAAAGCCTCCGGGCC
 AGTGAGAAAGCAGCGGGCTCTGCGGACTACAGCATGGAAGCCAAGAAGCGGAAGCGGAGGAGAAGGACA
 GCTTGAGCCGATACGACAGTGTGGAGACAAGAGTGTATCTGGTGGTGGATGTTTCCAATGAGGACCC
 CGCAACGCCCCGGGTAGCCCCGGCACACTCCCCTCCTGAAAATGGGCTGGACAAGGCCCGTAGCCTGAAA
 AAAGATGCCCCACCAGCCCTGCCTCGGTGGCCTCTTCCAGTAGCACACCTTCTCCAAGACCAAAGACC
 TTGGTCATAACGACAAATCTCCACCCCTGGGCTCAAGTCCAACACACCAACCCCAAGGAACGACGCCCC
 AACTCCAGGCACCAGCACGACCCAGGGCTCAGGTGATGCCGGTAAACCTCCGGGCATGGACCCGATA
 GGTATAATGGCCTCGGCTCTGCGCACGCCATCTCCATACCAGTCTATGCGGGCCCTTCGCCATGA
 TGAGCCACCATGAGATGAACGGCTCCCTCACCAGTCTGGCGCCTACGCCGGCCTCCACAACATCCCACC
 CCAGATGAGCGCCGCGCGCTGCTGCAGCCGCTGCCTATGGCCGATCGCCAATGGTGGAGCTTTGGAGCT
 GTTGGTTTTGACCCTCACCCCCGATGCGGGCCACAGGCCTCCCCTCAAGCCTGGCCTCCATTCTGGAG
 GAAAACAGCGTACTCATTCCATGTGAGTGTGATGGGCAGATGCAGCCCGTGCCTTCCCCACGACGC
 CCTGGCAGGCCCGGCATCCCGAGGCACGCCCGGAGATCAACACACTCAGCCACGGGGAGGTGGTGTGT
 GCCGTGACCATCAGCAACCCACGAGGCAGTCTACACAGGTGGCAAGGGCTGCGTGAAGATCTGGGACA
 TCAGCCAGCCAGGCAGCAAGAGCCCATCTCCAGCTGGACTGCCTGAACAGGGACAATTACATCCGCTC
 CTGCAAGCTGCTCCCTGATGGGCGCAGCTCATCGTGGGCGCGAGGCCAGCACGCTCACCATCTGGGAC
 CTGGCCTCGCCACGCCCGCATCAAGGCCGAGCTGACGTCTCGGCTCCCGCTGTTATGCCCTGGCCA
 TTAGCCCTGACGCCAAAGTCTGCTTCTCCTGCTGCAGCGATGGGAACATTGCTGTCTGGGACCTGCACAA
 CCAGACCTGGTCAGGCAGTTCAGGGCCACACAGATGGGGCCAGCTGCATAGACATCTCCCATGATGGC
 ACCAAACTGTGGACAGGGGGCTGGACAACACGGTGCCTCCTGGGACCTGCGGGAGGGCCGACAGCTAC
 AGCAGCATGACTTCACTTCCAGATCTTCTCGTGGGCTACTGCCCACTGGGGAGTGGCTGGCTGTGGG
 CATGGAGAGCAGCAACGTGGAGGTGCTGCACCACCAAGCCTGACAAGTACCAGCTGCACCTGCACGAG
 AGCTGCGTGTCTCCCTCAAGTTCGCTACTGCGCAAGTGGTTCGTGAGCACTGGGAAAGATAACCTTC
 TCAACGCCCTGGAGAGCCTTATGGAGCCAGCATATCCAGTCTAAAGAATCCTCGTCTGTCTTGAGTTG
 TGACATTTACGGGATGACAAATACATTGTAACAGGCTCTGGTGACAAGAAGGCCACAGTTATGAGGTC
 ATCTAC

ACGCGTACGCGGCCGCTCGAG - GFP Tag - GTTTAA

Protein Sequence: >RG224066 representing NM_005078
 Red=Cloning site Green=Tags(s)

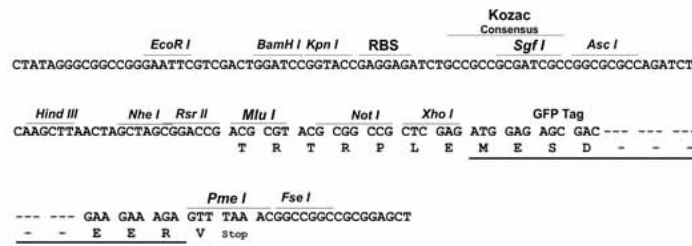
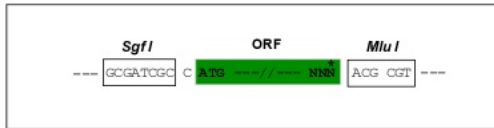
MYPQGRHPAPHQPGQPGFKFTVAESCDRIKDEFQFLQAQYHSLKVEYDKLANEKTEMQRHYVMYEMSYG
 LNIEMHKQTEIAKRLNTILAQIMPFLSQEHQQQVAQAVERAKQVTMTELNAIIGQQQLQAQHLSHATHGP
 PVQLPPHPGSLQPPGIPPVTGSSSGLLALGALGSQAHLTVKDEKNHHELDHRERESSANNVSPSESLRA
 SEKHRGSADYSMEAKKRKAEEKDSLRYDSDGDKSDDLVDVSNEDPATPRVSPAHSPPENGLDKARSLK
 KDAPTSPASVASSSTPSSKTKDLGHNDKSSTPGLKSNTPTRNDAPTPGTSTTPGLRSMGKPPGMDPI
 GIMASALRTPISITSSYAAPFAMMSHHEMNGSLTSPGAYAGLHNIPPQMSAAAAAAAAAYGRSPMVSFGA
 VGFDPPHPMRATGLPSSLASIPGGKPAYSFHVSADGQMOPVFPFDALAGPGIPRHRQINTLSHGVEVVC
 AVTISNPTRHVYTGKGCVKIWDISQPGSKSPISQLDCLNRDNYIRSKLLPDGRTLIVGGEASTLTIWD
 LASPTPRIKAELTSSAPACYALAI SPDAKVCFSCCSDGNI AVWDLHNQTLVRFQGHDTGASCIDISHDG
 TKLWTGGLDNTVRSWDLREGRQLQQHDFTSQIFSLGYCPTGEWLAVGMESSNVEVLHHTKPKDYQLHLHE
 SCVLSLKFAYCGKWFVSTGKDNLLNAWRTPYGASIFQSKESSSVLSCDISADDKYIVTSGDGKKATVYEV
 IY

TRTRPLE - GFP Tag - V

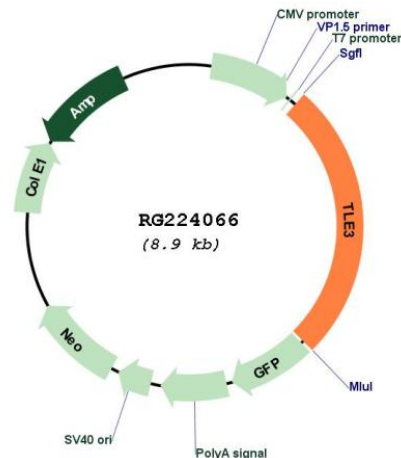
Restriction Sites: SgfI-MluI

Cloning Scheme:

Cloning sites used for ORF Shuttling:



Plasmid Map:



ACCN: NM_005078

ORF Size: 2316 bp

OTI Disclaimer: The molecular sequence of this clone aligns with the gene accession number as a point of reference only. However, individual transcript sequences of the same gene can differ through naturally occurring variations (e.g. polymorphisms), each with its own valid existence. This clone is substantially in agreement with the reference, but a complete review of all prevailing variants is recommended prior to use. [More info](#)

OTI Annotation: This clone was engineered to express the complete ORF with an expression tag. Expression varies depending on the nature of the gene.

Components: The ORF clone is ion-exchange column purified and shipped in a 2D barcoded Matrix tube containing 10ug of transfection-ready, dried plasmid DNA (reconstitute with 100 ul of water).

Reconstitution Method:

1. Centrifuge at 5,000xg for 5min.
2. Carefully open the tube and add 100ul of sterile water to dissolve the DNA.
3. Close the tube and incubate for 10 minutes at room temperature.
4. Briefly vortex the tube and then do a quick spin (less than 5000xg) to concentrate the liquid at the bottom.
5. Store the suspended plasmid at -20°C. The DNA is stable for at least one year from date of shipping when stored at -20°C.

RefSeq: [NM_005078.4](#)

RefSeq Size: 5354 bp

RefSeq ORF: 2319 bp

Locus ID: 7090

UniProt ID: [Q04726](#)

Cytogenetics: 15q23

Domains: WD40, TLE_N

Protein Families: Transcription Factors

Gene Summary: This gene encodes a transcriptional co-repressor protein that belongs to the transducin-like enhancer family of proteins. The members of this family function in the Notch signaling pathway that regulates determination of cell fate during development. Expression of this gene has been associated with a favorable outcome to chemotherapy with taxanes for ovarian carcinoma. Alternate splicing results in multiple transcript variants. Additional alternatively spliced transcript variants of this gene have been described, but their full-length nature is not known. [provided by RefSeq, Sep 2013]