

Product datasheet for **RG224058**

RGS3 (NM_130795) Human Tagged ORF Clone

Product data:

Product Type:	Expression Plasmids
Product Name:	RGS3 (NM_130795) Human Tagged ORF Clone
Tag:	TurboGFP
Symbol:	RGS3
Synonyms:	C2PA; RGP3
Mammalian Cell Selection:	Neomycin
Vector:	pCMV6-AC-GFP (PS100010)
E. coli Selection:	Ampicillin (100 ug/mL)



[View online »](#)

ORF Nucleotide Sequence:

>RG224058 representing NM_130795
 Red=Cloning site Blue=ORF Green=Tags(s)

TTTTGTAATACGACTCACTATAGGGCGGCCGGAATTCGTCGACTGGATCCGGTACCGAGGAGATCTGCC
 GCC**CGGATCGCC**

ATGAACCGCTTCAATGGGCTCTGCAAGGTGTGCTCGGAGCGCCGCTACCGCCAGATCACCATCCCGAGGG
 GAAAGGACGGCTTTGGCTTCACCATCTGCTGCGACTCTCCAGTTCGAGTCCAGGCCGTGGATTCCGGGGG
 TCCGGCGGAACGGGCAGGGCTGCAGCAGCTGGACACGGTCTGCAGCTGAATGAGAGGCCTGTGGAGCAC
 TGGAAATGTGTGGAGCTGGCCACGAGATCCGGAGCTGCCCCAGTGAGATCATCTACTCGTGTGGCGCA
 TGGTCCCCAGGTCAAGCCAGGACCAGATGGCGGGTCTGCGCGGGCCTCTGCAAGTCGACACATGA
 CCTCCAGTCAACCCCAACAAACGGGAGAAGAAGTGCACCCATGGGGTCCAGGCACGGCCTGAGCAGCGC
 CACAGCTGCCACCTGGTATGTGACAGCTCTGATGGGCTGTGCTCGGCGGCTGGGAGCGCTACACCGAGG
 TGGCCAAGCGGGGGCCAGCACACCCTGCCTGCACTGTCCCGTGCCTGCCCCACCGACCCCAACTA
 CATCATCTGGCCCCGCTGAATCTGGGAGCCAGCTGCTCCGGCCTGTGTACCAGGAGGATACCATCCCC
 GAAGAATCAGGGAGTCCCAGTAAAGGGAAGTCTACACAGGCCTGGGGAAGAAGTCCCAGGCTGATGAAGA
 CAGTGCAGACCATGAAGGGCCACGGGAAGTACAAAAGTCCCGGTTGTGAGGCCGATGCCACGCACTC
 AAGCTATGGCACCTACGTCAACCTGGCCCCAAAGTCTGGTGTCCCTGTCTTTGTTACGCTCTAGAT
 CTCTGTAATCCTGCCCGGACCCTCTGTGTCAGAGGAGCTGTGCTGTATGAAGGGAGGAACAAGGCTG
 CCGAGGTGACACTGTTTGCTATTCGGACTGTGCTCTTACCAAGGAGGACGAGCCTGGCCGCTGCGA
 CGTCTGAGGAACCCCTCTACCTCCAGAGTGTGAAGTGCAGGAAGGTTCTTCAGAAGACCTGAAATTC
 TCGTGTCTATCTAGCAGAGAAGGCAGAGTGTATTCACTTTGGAAGCGCACTCGCAGGAGCAGAAGA
 AGAGTGTGCTGGTGCCTGTGCGAGAACATCGCAAGCAGCAACAGCTGGCAGCATCACCCCGGCG
 CAAGATGTTTGAGACGGAGGCAGATGAGAAGAGGGAGATGGCCTTGGAGGAAGGGAAGGGCCTGGTGCC
 GAGGATCCCCACCCAGCAAGGAGCCCTCTCTGGCCAGGAGCTTCTCCAGGACAAGACCTTCCACCCA
 ACAAGGACTCCCCTTCTGGGCGAGGAACCCGCTCCAGCCAAGAACCAGTGTCCAGCAAAGACTCAGCTAC
 CTCTGAAGGATCCCCTCCAGGCCAGATGCTCCGCCAGCAAGGATGTGCCACCATGCCAGGAACCCCT
 CCAGCCCAAGACCTCTCACCTGCCAGGACCTACCTGCTGGTCAAGAACCCTGCCTCACCAGGACCCCT
 TACTACCAAAGACCTCCCTGCCATCCAGGAATCCCCACCCGGGACCTTCCACCCTGTCAAGATCTGCC
 TCCTAGCCAGGTCTCCCTGCCAGCAAGGCCCTTACTGAGGACACCATGAGCTCCGGGGACCTACTAGCA
 GCTACTGGGGACCCACCTGCGGCCCCAGGCCAGCCTTCTGTGATCCCTGAGGTCCGGCTGGATAGCACCT
 ACAGCCAGAAGGCAGGGGCAGAGCAGGGCTGCTCGGGAGATGAGGAGGATGCAGAAGAGGCCGAGGAGGT
 GGAGGAGGGGGAGGAAGGGGAGGAGGACGAGGATGAGGACACCAGCGATGACAACCTACGGAGAGCGCAGT
 GAGGCCAAGCGCAGCAGCATGATCGAGACGGGCCAGGGGGCTGAGGGTGGCCTCTCACTGCGTGTGAGCA
 ACTCGTGTGCGGCCCGGACGCACAGCGAGGGCAGCCTGCTGCAGGAGCCCGAGGGCCCTGCTTTGCCCT
 CGACACCACCTTGCACTGCTCAGACGGTGGGGCGCCGCTCCACCTGGGGCATGCCTTCGCCCAGCACC
 CTCAAGAAAGAGCTGGGCCGCAATGGTGGCTCCATGCACCACCTTCCCTCTTCTCACAGGACACAGGA
 AGATGAGCGGGGCTGACACCGTTGGGGATGATGACGAAGCCTCCCGGAAGAGAAAGAGCAAAAACCTAGC
 CAAGGACATGAAGAACAAGCTGGGATCTTCAGACGGCGGAATGAGTCCCCTGGAGCCCTCCCGCGGGC
 AAGGCAGACAAAATGATGAAGTATTCAAGCCACCTCAGAGGAAGCCCTCAAGTGGGGCAGTCTTTGG
 AGAAGCTGCTGGTTCACAAATACGGTTAGCAGTGTTCGAAGCCTTCTTCCGACTGAGTTCAGTGAGGA
 GAATCTGGAGTCTGTTGGCTTGTGAGGACTTCAAGAAGGTCAAGTACAGTCCAAAGTGGCATCCAAG
 GCCAAGAAGATCTTTGCTGAATACATCGGATCCAGGCATGCAAGGAGGTCAACCTGGACTCCTACACGC
 GGGAGCACACCAAGGACAACCTGCAGAGCGTACGCGGGGCTGCTTCGACCTGGCACAGAAGCGCATCTT
 CGGGCTCATGAAAAGGACTCGTACCCTCGTTTCTCCGTTCTGACCTTACCTGGACCTTATTAACCGA
 AAGAAGATGAGTCCCCCGCTT

ACGCGTACGCGGCCGCTCGAG - GFP Tag - GTTTAA

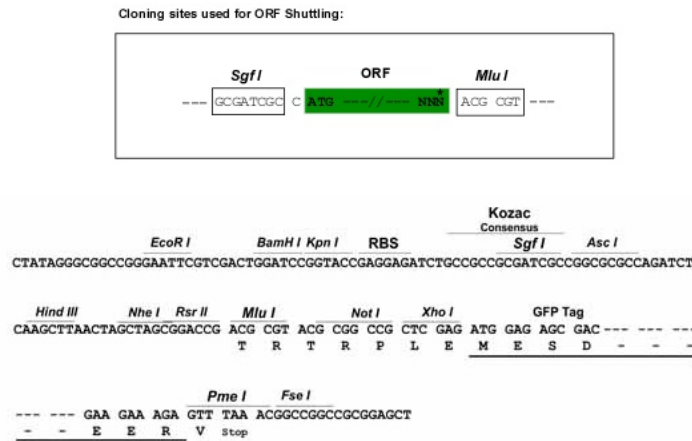
Protein Sequence: >RG224058 representing NM_130795
 Red=Cloning site Green=Tags(s)

MNRFNGLCKVCSERRYRQITIPRGKDGFGFTICCDSPVRVQAVDSGGPAERAGLQQLDVLQLNERPVEH
 WKCVELAHEIRSCPSEIILLVWRMVPQVKPGPDGGVLRASCKSTHDLQSPPNKREKNCTHGVQARPEQR
 HSCHLVCDSSDGLLLGGWERYTEVAKRGGQHTLPALSRATAPDPNYIILAPLNPGSQLLRPVYQEDTIP
 EESGSPSKGKSYTGLGKKSRMKTVQTMKGHGNVQNCPVVRPHATHSSYGYVTLAPKVLVFPVQPLD
 LCNPARTLLLSEELLLYEGRNKAEEVTLFAYSDLLLFTKEDEPGRCVDLRNPLYLQSVKLQEGSSEDLKF
 CVLYLAEKAECFLTEAHSQEQQKRVWCWLSENIAKQQQLAASPPDSKMFETEADKREMALEEKGPGA
 EDSPSPKEPSGQELPPGQDLPPNKDPSGQEPAPSQEP LSSKDSATSEGSPGPDAPPSKDVPPCQEP
 PAQDLSPCQDLPAQEP LPHQDPLLTKDLPAIQESPTRDLPPCQDLPPSQVSLPAKALTEDTMSSGDLLA
 ATGDPPAAPRPAFVIPEVRLDSTYSQKAGAEQCGSGDEEDAEEAEEVEEGEEDEDEDTSDNYGERS
 EAKRSSMIETGQGAEGGLSLRVQNSLRRTTHSEGSL LQEPRGPCFASDTTLHCSDGEGAASTWGMPSST
 LKKE LGRNGGSMHHL SLFFTGHRKMSGADTVGDDDEASRKRKSKNLAKDMKNKLGIFRRRNESPGAPPAG
 KADKMMKSFKPTSEEALKWGESLEKLLVHKYGLAVFQAF LRTEF SEENLEFWLACEDFKVKVKSQSKMASK
 AKKIFA EYIAIQACKEVNLD SYTREHTKDNLQSVTRGCFDLAQKRIFGLMEKDSYPRFLRSDLYLDLINQ
 KKMS PPL

TRTRPLE - GFP Tag - V

Restriction Sites: SgfI-MluI

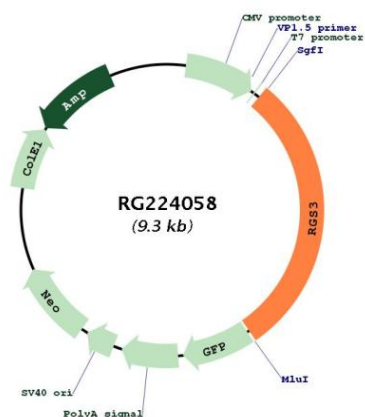
Cloning Scheme:



ACCN: NM_130795

ORF Size:	2751 bp
OTI Disclaimer:	The molecular sequence of this clone aligns with the gene accession number as a point of reference only. However, individual transcript sequences of the same gene can differ through naturally occurring variations (e.g. polymorphisms), each with its own valid existence. This clone is substantially in agreement with the reference, but a complete review of all prevailing variants is recommended prior to use. More info
OTI Annotation:	This clone was engineered to express the complete ORF with an expression tag. Expression varies depending on the nature of the gene.
Components:	The ORF clone is ion-exchange column purified and shipped in a 2D barcoded Matrix tube containing 10ug of transfection-ready, dried plasmid DNA (reconstitute with 100 ul of water).
Reconstitution Method:	<ol style="list-style-type: none">1. Centrifuge at 5,000xg for 5min.2. Carefully open the tube and add 100ul of sterile water to dissolve the DNA.3. Close the tube and incubate for 10 minutes at room temperature.4. Briefly vortex the tube and then do a quick spin (less than 5000xg) to concentrate the liquid at the bottom.5. Store the suspended plasmid at -20°C. The DNA is stable for at least one year from date of shipping when stored at -20°C.
RefSeq:	NM_130795.4
RefSeq Size:	3741 bp
RefSeq ORF:	2754 bp
Locus ID:	5998
UniProt ID:	P49796
Cytogenetics:	9q32
Domains:	RGS, PDZ
Protein Families:	Druggable Genome
Protein Pathways:	Axon guidance
Gene Summary:	This gene encodes a member of the regulator of G-protein signaling (RGS) family. This protein is a GTPase-activating protein that inhibits G-protein-mediated signal transduction. Alternative splicing and the use of alternative promoters results in multiple transcript variants encoding different isoforms. Long isoforms are largely cytosolic and plasma membrane-associated with a function in Wnt signaling and in the epithelial mesenchymal transition, while shorter N-terminally-truncated isoforms can be nuclear. [provided by RefSeq, Jan 2013]

Product images:



Circular map for RG224058