

## Product datasheet for **RG224035**

### **MMS19 (NM\_022362) Human Tagged ORF Clone**

#### **Product data:**

Product Type:	Expression Plasmids
Product Name:	MMS19 (NM_022362) Human Tagged ORF Clone
Tag:	TurboGFP
Symbol:	MMS19
Synonyms:	CIAO4; hMMS19; MET18; MMS19L
Mammalian Cell Selection:	Neomycin
Vector:	pCMV6-AC-GFP (PS100010)
E. coli Selection:	Ampicillin (100 ug/mL)



[View online »](#)

**ORF Nucleotide Sequence:**

>RG224035 representing NM\_022362.  
 Blue=ORF Red=Cloning site Green=Tag(s)

```

GCTCGTTTAGTGAACCGTCAGAATTTTGTAAACGACTCACTATAGGGCGGCCGGGAATTCGTGCACTG
GATCCGGTACCGAGGAGATCTGCCGCCACGATCGCC
ATGGCCGCTGCCCGGCTGTGGAGGCGGCGCCCTATGGGTGCCCTATGGGGCCTCGTGCACGACTTC
GTCGTGGGTAGCAAGAGGGCCCGCTGACCAAGTGGTGCAGATGTAAATCTGGCAACTATACAGTG
TTACAAGTTGTGAAGCCCTGGGTCTCTAGAGAATCCAGAACCCGAACCTCGGGCAGCAGCAATC
CAGCTTTTGTACAGGTGCTACTCCACTGTACACCTTGCTCCTGGAGAAGGAAGTGTACACCTGATA
CTGTTCTATGAGAACCGCTGAAGGACCATCATCTTGTGATCCCATCTGCTCCTGCAGGGTTTGAAGGCA
CTTAGCCTGTGTGGCCCTGCCCCAGGGCTGGCTGTTTCTGTGCTTAAAGCCATCTTCCAGGAAGTG
CATGTACAGTCCCTGCCACAGGTGGACCGACACAGTCTACAATATCATACCAATTTTATGCGAAC
CGGAAGAAGAGCTAAAGAGCCTAGGAGCTGACTTACCTTTGGCTTCCAGGTGATGGATGGGGAA
AAGGATCCCGTAACTTCTGGTGGCTTCCGCATCGTCCATGACCTCATCTCCAGGGACTATAGCCTG
GGACCTTTGTGGAGGAGTTGTTTGAAGTGACATCCTGTTATTTCCCTATCGATTTTACCCCTCCACCT
AATGATCCCATGGTATCCAGAGAGAAGACCTCATCCTGAGTCTTCGCGCTGTGCTGGCTTCTACACCA
CGATTTGCTGAGTTTCTGCTGCCCTGTTGATTGAGAAAGTGGATTCTGAGGTTCTGAGTGCCAAGTTG
GATTCTCTACAGACTCTGAATGCTTGTGTGCTGTGATGGACAGAAGGAAGTGAAGGACTTCTCCCC
AGCCTTTGGGCTTCTATCCGAGAGAGGTGTTCCAGACGGCAAGTGAAGGGTGGAGGCAGAGGGCCTG
GCGGCCCTCCACTCCCTGACTGCGTGTGTTGCTCGCTCTGTGCTGAGGGCTGATGCTGAGGACCTCCTT
GACTCCTTCTTAGCAACATTCTACAGGACTGCAGGCACCACCTGTGTGAACCGGACATGAACTGGTG
TGGCCTAGTGCCAAGCTGTTGCAGGCAGCTGCAGGTGCATCTGCCCGGCTGTGACTCTGTCCACAGC
AATGACTGCCTTTACTGCTGGAACAGTCCACAAGCACAGTCAAGCAGCCAGCCGGGCGGACAACCTT
GAAATGCTCCTGGGTTTCTTGAAGCTGCAGCAGAAATGGAGCTATGAAGACAAAGATCAAAGGCCCTG
AATGGCTTCAAGGACCAGCTGTGCTCACTGGTATTGCTGCTTAAACAGACCCAGCACCAGCTTCAAG
CTTGTGGCATCCGTACACTGACAGTCTTGGTGCCAGCCAGATCTCCTATCTTATGAGGACTTGGAG
CTGGCAGTGGGTACCTGTACAGACTGAGCTTCTGAAGGAGGATTCCCAGAGTTGCAGGGTGGCAGCA
CTGGAAGCATCAGGAACCTGGCTGCTCTACCTGTGGCTTCCAGCAGCCACCTCGTACCCAAGCTC
GCTGAGGAGTGCCTGTAGGGGAGTCAAATTTGACTAACGGAGATGAGCCACCCAATGCTCCCGCAT
CTGTGCTGTCTGCAAGCCTTGTGAGTGTATCAACACATCCAGCATCGTCAAGGAGACTGCCTCTG
CTGCTGCAGCATCTGTGCAAGTGAACAGAGGGAATATGGTTGCACAATCCAGTACGTTATTGCTGTC
TGTGAGAGCCTCAGACAGATGGCAGAAAAATGTGAGCAGGACCCTGAGAGTTGCTGGTATTTCCACCAG
ACAGCTATACCTTGCTGCTTGGCTGTGACGGCCTCTATGCCAGAGAAGGAGCCCTCAGTTCTG
AGAAAAGTACTATTGGAGGATGAGGTGTTGGTGCCATGGTGTCTGTGCTATTGGCACTGCTACAACCCAC
CTGAGCCCTGAGTTAGCTGCCAGAGTGTGACACACATTGTGCCCTCTTCTTGGATGGCAACGTGTCC
TTTCTGCTGAAAACAGCTTCCCAGCAGATTCCAGCCATTCCAGGATGGCTCCTCAGGGCAGAGGCGG
CTGATTGCACTGCTTATGGCCTTGTCTGCTCCCTGCCTCGAAATGTGGAATCCCTCAGCTGAACCA
GCTATCGGGGAGCTTTTGAAGTGAAGTGTGCCACAGCTGCCCTTTTCTTCCACCGCTGCTGCCAAG
TGCTTGCAGGACTCCTCAACAAGCACCCTGCAGGGCAGCAGCTGGATGAATTCCTACAGCTAGCTGTG
GACAAAGTGGAGGCTGGCTGGCTCTGGGCCCTGCTGATGAGGCCTTCACTCTTCTCTGGGTA
ACAAAGGCCCTAGTGTGCTCAGATACCATCCTCTCAGCTCCTGCCTTACAGCCCGGCTCATGGGCTCCTG
AGTGACCCAGAATTAGGTCCAGCAGCAGCTGATGGCTTCTCTGCTCATGTCTGACTGCACTGATGTG
CTGACTCGTGTGGCCATGCCGAAGTGGGATCATGTTCCGCCAGCGTTCTTCCAGATAATGTGCTT
GCTTTGGTCCAGGGCTTCCATGCTGCTCCCAAGATGTGAAGCCAACTACTTGAAGGTCTTTCTCAT
GTACTTAAACAGGCTGCCAAGCCTGTACTTGGCAGAGCTGCCACGCTTCTTCTTGTGCTGGAG
GCCCTGTCTGCCCTGACTGTGTGGTGCAGCTTCCACCCTCAGTGCCTTCCAGCTTCTTACTGGAA
GCACCCAAGTCAAGTCTTACGTGGACACCCTCGTACCAAGTTTCTGAACCTCAGCTTAGCCCT
TCCATGGCTGTCCGGATGCCGCACTGCAGTGCATGCATGCTCTCACTCGCTGCCACCCCTGTGCTG
CTGCCGTACAAACCACAGGTGATTCGGGCTTAGCCAAACCCCTGGATGACAAGAAGAGACTGGTGCC
AAGGAAGCAGTGTGAGCCAGAGGGGAGTGGTTTCTGTTGGGGAGCCCTGGCAGC
ACGCGTACGCGGCCGCTCGAG – GFP Tag – GTTTAAAC
  
```

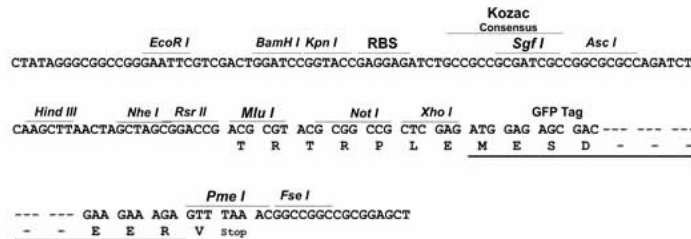
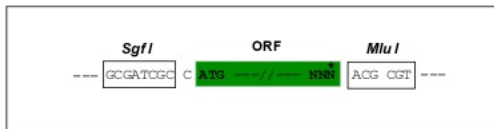
**Protein Sequence:** >Peptide sequence encoded by RG224035  
 Blue=ORF Red=Cloning site Green=Tag(s)

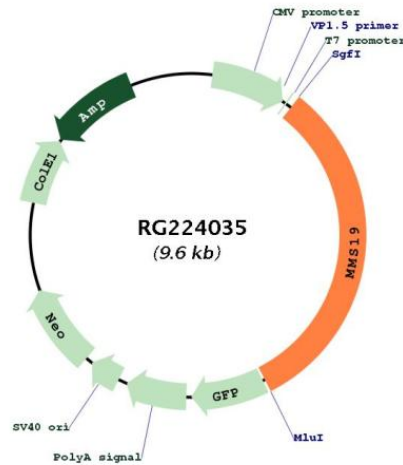
MAAAAAVEAAAPMGALWGLVHDFVVGQEGPADQVAADVKSNGYTVLQVVEALGSSLENPEPRTRARAI  
 QLLSQVLLHCHTLLLLEKEVVHLILFYENRLKDHHLVIPSVLQGLKALSLCVALPPGLAVSVLKAIFQEV  
 HVQSLPQVDRHTVYNIITNFMRTREEELKSLGADFTFGFIQVMDGEKDPNLLVAFRIVHDLISRDISL  
 GPFVEELFEVTSYFPIIDFTPPPNDPHGIQREDLILSLRAVLASTPRFAEFLPLLLIEKVDSEVLSAKL  
 DSLQTLNACCAVYGQKELKDFLPSLWASIRREVFQTASERVEAEGLAALHSLTACLRSRVLRAEDLL  
 DSFLSNILQDCRHHLCPEPMKLVMPSAKLLQAAAGASARACDSVTSNVLPLLLLEQFHKHSQSSQRRTIL  
 EMLLGFLKQQKWSYEDKDQRPLNGFKDQLCSLVMAL TDPSTQLQLVGIRTLTVLGAQPDLLSYEDLE  
 LAVGHL YRLSFLKEDSQSCRVAAL EASGTLAAL YPVAFSSHLVPKLA EELRVGESNL TNGDEPTQCSRH  
 LCCLQALSAVSTHPSIVKETLPLLLQHLWQVNRGNMVAQSSDVI AVCQSLRQMAEKQQDPESCWFHQ  
 TAIPCLLALAVQASMPEKPSVLRKVLLEDEVL AAMVSVIGTATHL SPELAAQSVTHIVPLFLDGNVS  
 FLPENSFSPRFQPFQDGSQGRRLIALLMFVCSLPRNVEIPQLNQLMRELLELSCCHSCPFSSTAAAK  
 CFAGLLNKHPAGQQLDEFLLQAVDKVEAGL GSGPCRSQAF TLLLWYTKALVLRYPHPLSSCLTARLMGLL  
 SDPELGAAAADGFSLLMSDCTDVLTRAGHAEVRIMFRQRF TDNVPALVQGFHAAQDVKPNYLKGLSH  
 VLNRLPKPVLLPELPTLLSLLLEALSCPDVQVQLSTLSCLQPLLEAPQVMSLHVDTLVTKFLNLS SSP  
 SMAVRI AALQCMHALTRLPTVLLPYKQVIRALAKPLDDKRLVRKEAVSARGEWFLLGSPGS  
 TRTRPLEMESDESGLPAMEIECRITGTLNGVEFELVGGEGTPEQGRMTNKMSTKGALTFSPYLLSHV  
 MGYGFYHFGTYPSTYENPFLHAINNGGYNTRIEKYEDGGV LHVFSYRYEAGRVIGDFKVMGTGFPED  
 SVIFTDKIIRSNATVEHLHPMGDNDLDGSFTRTFSLRDGGYSSVVD SHMHFKSAIHP SILQNGGPMFA  
 FRRVEEDHSNTELGIVEYQHAFKTPDADAGEERV

**Restriction Sites:** SgfI-MluI

**Cloning Scheme:**

Cloning sites used for ORF Shutting:



**Plasmid Map:**


**ACCN:** NM\_022362

**ORF Size:** 3090 bp

**OTI Disclaimer:** The molecular sequence of this clone aligns with the gene accession number as a point of reference only. However, individual transcript sequences of the same gene can differ through naturally occurring variations (e.g. polymorphisms), each with its own valid existence. This clone is substantially in agreement with the reference, but a complete review of all prevailing variants is recommended prior to use. [More info](#)

**OTI Annotation:** This clone was engineered to express the complete ORF with an expression tag. Expression varies depending on the nature of the gene.

**Components:** The ORF clone is ion-exchange column purified and shipped in a 2D barcoded Matrix tube containing 10ug of transfection-ready, dried plasmid DNA (reconstitute with 100 ul of water).

**Reconstitution Method:**

1. Centrifuge at 5,000xg for 5min.
2. Carefully open the tube and add 100ul of sterile water to dissolve the DNA.
3. Close the tube and incubate for 10 minutes at room temperature.
4. Briefly vortex the tube and then do a quick spin (less than 5000xg) to concentrate the liquid at the bottom.
5. Store the suspended plasmid at -20°C. The DNA is stable for at least one year from date of shipping when stored at -20°C.

**RefSeq:** [NM\\_022362.5](#)

**RefSeq Size:** 3606 bp

**RefSeq ORF:** 3093 bp

**Locus ID:** 64210

**UniProt ID:** [Q96T76](#)

<b>Cytogenetics:</b>	10q24.1
<b>Protein Families:</b>	Druggable Genome, Transcription Factors
<b>MW:</b>	113.3 kDa
<b>Gene Summary:</b>	<p>Key component of the cytosolic iron-sulfur protein assembly (CIA) complex, a multiprotein complex that mediates the incorporation of iron-sulfur cluster into apoproteins specifically involved in DNA metabolism and genomic integrity. In the CIA complex, MMS19 acts as an adapter between early-acting CIA components and a subset of cellular target iron-sulfur proteins such as ERCC2/XPD, FANCI and RTEL1, thereby playing a key role in nucleotide excision repair (NER), homologous recombination-mediated double-strand break DNA repair, DNA replication and RNA polymerase II (POL II) transcription (PubMed:22678362, PubMed:22678361, PubMed:29225034, PubMed:23585563). As part of the mitotic spindle-associated MMXD complex, plays a role in chromosome segregation, probably by facilitating iron-sulfur cluster assembly into ERCC2/XPD (PubMed:20797633). Indirectly acts as a transcriptional coactivator of estrogen receptor (ER), via its role in iron-sulfur insertion into some component of the TFIIH-machinery (PubMed:11279242).[UniProtKB/Swiss-Prot Function]</p>