

Product datasheet for **RG224001**

NCOA1 (NM_147233) Human Tagged ORF Clone

Product data:

Product Type:	Expression Plasmids
Product Name:	NCOA1 (NM_147233) Human Tagged ORF Clone
Tag:	TurboGFP
Symbol:	NCOA1
Synonyms:	bHLHe42; bHLHe74; F-SRC-1; KAT13A; RIP160; SRC1
Mammalian Cell Selection:	Neomycin
Vector:	pCMV6-AC-GFP (PS100010)
E. coli Selection:	Ampicillin (100 ug/mL)
ORF Nucleotide Sequence:	>RG224001 representing NM_147233 Red=Cloning site Blue=ORF Green=Tags(s)

TTTTGTAATACGACTCACTATAGGGCGGCCGGAATTCGTCGACTGGATCCGGTACCGAGGAGATCTGCC
GCC**CGATCGCC**

ATGAGTGGCCTCGGGACAGTTCATCCGACCCTGCTAACCAGACTCACATAAGAGGAAAGGATCGCCAT
GTGACACACTGGCATCAAGCACGAAAAGAGGCGCAGGGAGCAAGAAAATAAATATTTAGAAGAACTAGC
TGAGTTACTGTCTGCCAACATTAGTGACATTGACAGCTTGAGTGTAAAACCAGACAAATGCAAGATTTTG
AAGAAAACAGTCGATCAGATACAGCTAATGAAGAGAATGGAACAAGAGAAAATCAACAACATGATGACGATG
TACAGAAATCAGACATCTCATCAAGTAGTCAAGGAGTGATAGAAAAGGAATCCTTGGGACCTCTTCTTTT
GGAGGCTTTGGATGGATTTTCTTTGTTGTGAAGTGTGAAGGGAGAATTGTATTTGTGTCAGAGAATGTA
ACCAGCTACTTAGGTTACAATCAGGAGGAATTAATGAATACGAGCGTCTACAGCATACTGCACGTGGGGG
ATCATGCAGAATTTGTGAAGAATCTGCTACCAAAATCACTAGTAAATGGAGTTTCTTGGCCTCAAGAGGC
AACACGACGAAATAGCCATACCTTTAACTGCAGGATGCTAATTCACCTCCAGATGAGCCAGGGACCGAG
AACCAAGAAGCTTGCCAGCGTTATGAAGTAATGCAGTGTTCCTGTGTACAGCCAAAATCAATTCAAG
AGGATGGAGAAGATTTCCAGTCATGTCTGATTTGTATTGCACGGCGATTACCTCGGCCTCCAGCTATTAC
GGGTGTAGAATCCTTTATGACCAAGCAAGATACTACAGGTAATAATCATCTCTATTGATACTAGTTCCTG
AGAGTCTGTCGAGAAGCTGGTTGGGAAGATTTAGTGAGGAAGTGCATTTATGCTTTTTTCCAACTCAGG
GCAGAGAACCATCTTATGCCAGACAGCTGTTCCAAGAAGTGATGACTCGTGGCACTGCCTCCAGCCCTC
CTATAGATTTCATATTGAATGATGGGACAATGCTTAGCGCCACACCAAGTGTAACCTTTGCTACCCTCAA
AGTCCAGACATGCAACCTTTTCATCATGGGAATTCATATCATCGACAGGGAGCACAGTGGGCTTTCTCCTC
AAGATGACACTAATTCTGGAATGTCAATCCCCGAGTAAATCCCTCGGTCAATCCTAGTATCTCTCCAGC
TCATGGTGTGGCTCGTTCATCCACATTGCCACCATCCAACAGCAACATGGTATCCACCAGAATAAACCGC
CAGCAGAGCTCAGACCTCATAGCAGCAGTCATAGTAATTCTAGCAACAGCCAAGGAAGTTTCGGATGCT
CACCCGGAAGTCAGATTGTAGCCAATGTTGCCTTAAACCAAGGACAGGCCAGTTCACAGAGCAGTAATCC
CTCTTAAACCTCAATAATTCTCTATGGAAGGTACAGGAATATCCCTAGCACAGTTCATGTCTCCAAG



[View online »](#)

AGACAGGTTACTTCTGGATTGGCAACAAGGCCAGGATGCCAAACAATTCCTTTCTCTAATATTTTCGA
 CATTAAGCTCTCCCGTTGGCATGACAAGTAGTGCTGTAATAATAAACCGATCTTATTCAAACATCCC
 AGTAACATCTTTACAGGGTATGAATGAAGGACCAATAACTCCGTTGGCTTCTCTGCCAGTTCTCCAGTC
 CTCAGGCAGATGAGCTCACAGAATTCACCTAGCAGATTAATATACAACCAGCAAAGCTGAGTCCAAAG
 ATAACAAAGAGATTGCCTCAATTTTAAATGAAATGATTCAATCTGACAACAGCTCTAGTGATGGCAAACC
 TCTGGATTACGGGCTTCTGCATAACAATGACAGACTTTTCAGATGGAGACAGTAAATACTCTCAAACCACT
 CACAAACTAGTGCAGCTTTTGCACAACAAGTCCGAACAGCAGTTACGGCATGCTGATATAGACACAACT
 GCAAAGATGTCCTGTCTTGCACAGGCACTTCCAACCTCTGCCTCTGCTAACTCTTCAGGAGTTCTTGTC
 CTCTTCTCATAGCTCATTGACAGAACGGCATAAAAATTCTACACCGGCTCTTACAGGAGGGTAGCCCTCA
 GATATCACCACCTTGTCTGTGCGAGCCTGATAAAAAGGACAGTGCATCTACTTCTGTGTCAGTGACTGGAC
 AGGTACAAGGAACTCCAGTATAAACTAGAACTGGATGCTTCAAAGAAAAAGAATCAAAGACCATCA
 GCTCTACGCTATCTTTAGATAAAGATGAGAAAGATTTAAGATCAACTCCAAACCTGAGCCTGGATGAT
 GTAAGGTGAAAGTGAAAGAAAGAACAGATGGATCCATGTAATACAAACCAACCCCAATGACCAAAC
 CCACTCCTGAGGAAATAAACTGGAGGCCAGAGCCAGTTTACAGCTGACCTTGACCAGTTTGATCAGTT
 ACTGCCACGCTGGAGAAGGCAGCACAGTTGCCAGGCTTATGTGAGACAGACAGGATGGATGGTGGCGTC
 ACCAGTGTAAACATCAAAATCGGAGATCCTGCCAGCTTCACTTCAGTCCGCCACTGCCAGACCCACTTCCA
 GGCTAAATAGATTACCTGAGCTGGAATTGGAAGCAATTGATAACCAATTTGGACAACCAGGAACAGGCGA
 TCAGATTCATGGACAAATAACAGTGCAGCTATAAATCAGAGTAAATCAGAAGACCAGTGTATTAGC
 TCACAATTAGATGAGCTTCTGTGCCACCCACAACAGTAGAAGGGAGAAATGATGAGAAGGCTCTTCTTG
 AACAGCTGGTATCCTTCTTAGTGGCAAAGATGAACTGAGCTAGCTGAACTAGACAGAGCTCTGGGAAT
 TGACAACTTGTTCAGGGGGTGGATTAGATGTATTATCAGAGAGATTTCCACCACAACAAGCAACGCCA
 CCTTTGATCATGGAAGAAAGACCAACCTTTATCCCAGCCTTACTCTTCTCCTTCTCTACTGCCAATC
 TCCCTAGCCCTTTCCAAGGCATGGTCAGGCAAAAACCTTCACTGGGACGATGCCTGTTCAAGTAAACAC
 TCCCCGAGGTGCTTTTTACCTGGCATGGGCATGCAGCCAGGCAAACTCTAAACAGACCTCCGGCTGCA
 CCTAACAGCTTCGACTTCAACTACAGCAGCGATTACAGGGACAACAGCAGTTGATACACAAAAATCGGC
 AAGCTATCTTAAACCAGTTTGCAGCAACTGCTCCTGTTGGCATCAATATGAGATCAGGCATGCAACAGCA
 AATTACACCTCAGCCACCCCTGAATGCTCAAAATGTTGGCACAACGTCAGCGGGAAGTGTACAGTCAACAG
 CACCGACAGAGGCAGCTAATACAGCAGCAAAGAGCCATGCTTATGAGGCAGCAAAGCTTTGGGAACAACC
 TCCCTCCCTCATCTGGACTACCAGTTCAAATGGGAACCCCGTCTTCTCAGGGTGTCCACAGCAATT
 CCCCTATCCACAAACTATGGTACAAATCCAGGAACCCACCTGCTTCTACCAGCCGTTTTCACTA
 GCAGCAAATCCTGAAGCATCCTTGGCCAACCGCAACAGCATGGTGAGCAGAGGCATGACAGGAAACATAG
 GAGGACAGTTTGGCACTGGAATCAATCCTCAGATGCAGCAGAATGTCTTCCAGTATCCAGGAGCAGGAAT
 GGTTCCTCAAGGTGAGGCCAAGCTTGTCCATCTCTAAGCCCTGGGAGCTCCATGGTGCCGATGCCAATC
 CCTCCTCCTCAGAGTTCTTCTTCCAGCAAACCTCCACCTGCCTCCGGGTATCAGTACCAGACATGAAGG
 CCTGGCAGCAAGGAGCGATAGGAAACAACAATGTGTTCAAGCTGTCCAGAACCAGCCACGCTGC
 ACAGCCAGGAGTATAACAACAATGAGCATCACCGTTTCCATGGCAGGTGGAAATACGAATGTTCAGAAC
 ATGAACCAATGATGGCCAGATGCAGATGAGCTTTTGCAGATGCCAGGAATGAACACTGTGTGCCCTG
 AGCAGATAAATGATCCCGCACTGAGACACAGGCCTTACTGCAACAGCTCTCATCCACTGACCTTCT
 CAAAACAGAAGCAGATGGAACCCAGGTGCAACAGGTTTCAAGTGTGCTGACGTCAGTGTACAGTGAAT
 CTGGTAGCGGGGACCTTACCTGAACCCAGCCTGGTCCACTGGGAACCTAAAAGCCACGTCAGGACCAC
 AGACCCCCAGGCCAGCAGAAGAGCCTCCTTACAGCAGTACTGACTGAA

ACGCGTACGCGGCCGCTCGAG – GFP Tag – GTTTAA

Protein Sequence: >RG224001 representing NM_147233
 Red=Cloning site Green=Tags(s)

```

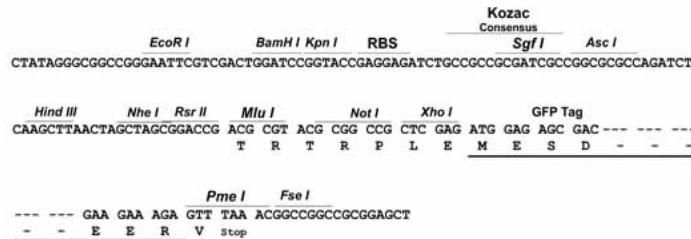
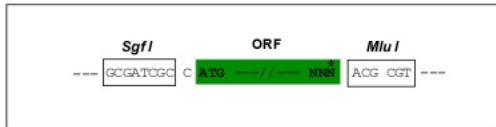
MSLGLDSSSDPANPDSHKRKGSPCDTLASSTEKRRREQENKYLEELAELLSANISDIDSLSVKPKDKCKIL
KKTVDQIQLMKRMEQEKSTTDDDDVQKSDISSSSQGVIEKESLGPLLLEALDGGFFVFNCEGRIVFVSENV
TSYLGYNQEELMNTSVYSILHVGDDHAEFVNKLLPKSLVNGVWPWQEA TRRNSHTFNCRMLIHPPDEPGTE
NQEACQRVEVMQCFTVSQPKSIQEDGEDFQSCLIC IARRLRPPPAITGVESFMTKQD TTGKIISIDTSSL
RAAGRTGWEDLVRKCIYAFFQPQGREPSYARQLFQEVMTRG TASSPSYRFLNDGTMLS AHTKCKLCYPQ
SPDMQPFIMGIHIIDREHSGLS PQDDTNSGMSIPRVNPSVNP SISP AHGVARSS TLPSSNSNMVSTRINR
QQSSDLHSSSHSNSNSQGSFGCSPGSQIVANVALNQQQ ASSQSSNPSLNLNNSPMEGTGISLAQFMSPR
RQVTSGLATRPRMPNNSFPNISTLSSPVGMTSSACNNNRSYSNIPV TSLQGMNEGPNN SVGFSASSPV
LRQMSSQNPSRLNIQPAKAESKDNKEIASILNEMIQSDNSSSDGKPLDSGLLHNNDR LSDGDSKYSQTS
HKL VQLL TTTAEQQLRHADIDT SCKDVL SGTGTSNSASANS SGGSCPSSHSL TERHKILHRLLEQEGSPS
DITTL SVEPKKDSASTSV SVTGQVQGNSSIKLELDASKKKE SKDHQLLR YLLDKDEKDLRSTPNL S LDD
VKVKVEKKEQMDPCNTNPTMTKPTPEEIKLEAQSQFTADLDQFDQLLP TLEKAAQLPGLCETDRMDGAV
TSVTIKSEILPASLQSATARPT SRLNRLPELELEAIDNQFGQP GTGDQIPWTNNTVTAINQSKSEDCQIS
SQLDELLCPPTTVEGRNDEKALLEQLVSFLSGKDETELAE LDRALGIDKLVQGGGLDVL SERFPPQATP
PLIMEERNL YSPYSSPSTANL P S PFGMV RQKPSLGTMPVQVTPPRGAFSPGMGMQPRQTLNRPPAA
PNQLRLQLQQRLQGQQQLIHQNRQAILNQFAATAPVGINMRSGMQQITPQPPLNAQMLAQRQRELYSQQ
HRQRQLIQQRAML MRQQSF GNNLPPSSGLPVQMGNPRLPQGAPQQFPYPPNYGTNPGTPPASTSPFSQL
AANPEASLANRNSMVS RGMTGNIGGQFGTGINPQM QNVFYQYPGAGMVPQGEANFAPSLSPGSSMVPMPI
PPPQSSLLQQTTPASGYQSPDMKAWQQGAI GNNNVFSQAVQNQPTPAQPGVYNNMSITVSMAGGNTNVQN
MNPMMAMQMSSLQMPGMNTVCPEQINDPALRHTGL YCNQLSSTDLLKTEADGTQVQQVVFADVQCTVN
LVGGDPYLNQPGPLGTQKPTSGPQTPQAQQKSL LQQLL TE
    
```

TRTRPLE - GFP Tag - V

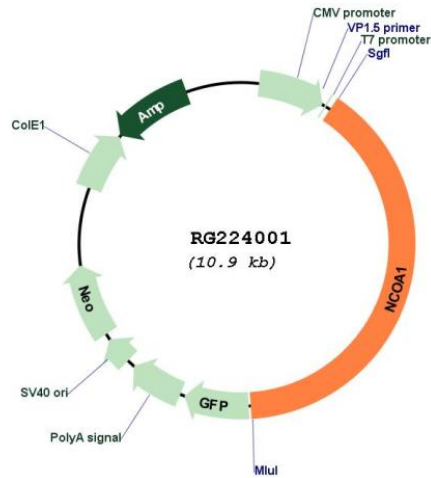
Restriction Sites: SgfI-MluI

Cloning Scheme:

Cloning sites used for ORF Shutting:



Plasmid Map:



ACCN: NM_147233

ORF Size: 4320 bp

OTI Disclaimer: The molecular sequence of this clone aligns with the gene accession number as a point of reference only. However, individual transcript sequences of the same gene can differ through naturally occurring variations (e.g. polymorphisms), each with its own valid existence. This clone is substantially in agreement with the reference, but a complete review of all prevailing variants is recommended prior to use. [More info](#)

OTI Annotation: This clone was engineered to express the complete ORF with an expression tag. Expression varies depending on the nature of the gene.

Components: The ORF clone is ion-exchange column purified and shipped in a 2D barcoded Matrix tube containing 10ug of transfection-ready, dried plasmid DNA (reconstitute with 100 ul of water).

Reconstitution Method:

1. Centrifuge at 5,000xg for 5min.
2. Carefully open the tube and add 100ul of sterile water to dissolve the DNA.
3. Close the tube and incubate for 10 minutes at room temperature.
4. Briefly vortex the tube and then do a quick spin (less than 5000xg) to concentrate the liquid at the bottom.
5. Store the suspended plasmid at -20°C. The DNA is stable for at least one year from date of shipping when stored at -20°C.

RefSeq: [NM_147233.2](#), [NP_671766.1](#)

RefSeq Size: 6892 bp

RefSeq ORF: 4323 bp

Locus ID: 8648

UniProt ID: [Q15788](#)

Cytogenetics: 2p23.3

Domains: PAS, HLH

Protein Families: Druggable Genome, Transcription Factors

Gene Summary: The protein encoded by this gene acts as a transcriptional coactivator for steroid and nuclear hormone receptors. It is a member of the p160/steroid receptor coactivator (SRC) family and like other family members has histone acetyltransferase activity and contains a nuclear localization signal, as well as bHLH and PAS domains. The product of this gene binds nuclear receptors directly and stimulates the transcriptional activities in a hormone-dependent fashion. Alternatively spliced transcript variants encoding different isoforms have been identified. [provided by RefSeq, Jul 2008]