

Product datasheet for **RG223999**

SNX21 (NM_001042632) Human Tagged ORF Clone

Product data:

Product Type: Expression Plasmids
Product Name: SNX21 (NM_001042632) Human Tagged ORF Clone
Tag: TurboGFP
Symbol: SNX21
Synonyms: C20orf161; dj337O18.4; PP3993; SNX-L; SNXL
Mammalian Cell Selection: Neomycin
Vector: pCMV6-AC-GFP (PS100010)
E. coli Selection: Ampicillin (100 ug/mL)
ORF Nucleotide Sequence: >RG223999 representing NM_001042632
Red=Cloning site Blue=ORF Green=Tags(s)

TTTTGTAATACGACTCACTATAGGGCGGCCGGAATTCGTCGACTGGATCCGGTACCGAGGAGATCTGCC
GCC**CGATCGCC**

ATGCACCGTGGGACGCAGGAGGGTGCCATGGCCTCCCGGCTCCTGCACCGGCTGCGGCACGCCTTGCCG
GCGACGGCCCCGGGAGGCGCGGCCAGTCCAGAGCCGAGCAGTTTCCGGAGAGCTCAGAGCTGGAGGA
CGACGACGCCGAGGGCTGTCTCCGACTCAGCGGCACCCTCAGCTTCACCAGCGCCGAGGACGACGAG
GACGACGAGGACGAGGACGACGAGGAGGCTGGCCCTGACCAGCTGCCCTCGGGGATGGGACGTCAGGAG
AAGACGCAGAACGAGCCCCACCTGATGGGCAGTGGGGCAGTCAGCTCCTGGCGGGCAGCTGCAGGA
TTTCTGGAAGAAGTCCCGAACACCTTGGCACCCAGCGGCTGCTCTTGAAGTGACCAGCGCTAACGTT
GTCAAGGACCCGCCCTCAACTCTACACCTCGCCG

ACGCGTACGCGGCCGCTCGAG - GFP Tag - GTTTAA

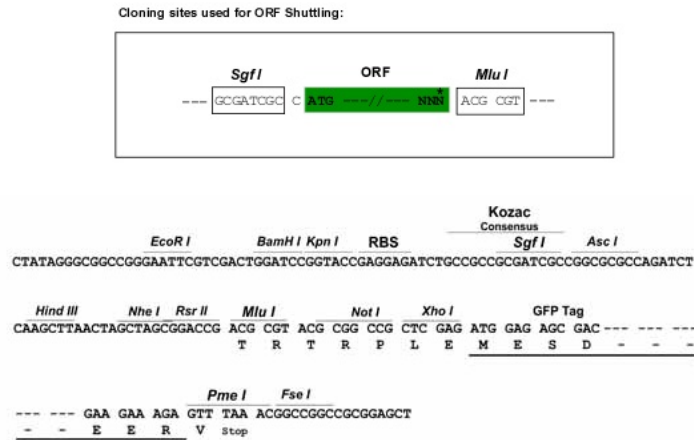
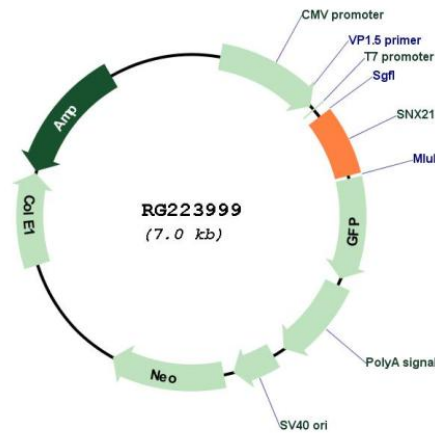
Protein Sequence: >RG223999 representing NM_001042632
Red=Cloning site Green=Tags(s)
MHRGTQEGAMASRLLHRLRHALAGDGPGEAAASPEAEQFPESSELEDDDAEGLSSRLSGTLSFTSAEDDE
DDEDEDDEEAGPDQLPLGDGTSGEDAERSPPPDGQWGSQLLARQLQDFWKKSRNTLAPQRLLEFVTSANV
VKDPPSNSTPSP

TRTRPLE - GFP Tag - V

Restriction Sites: Sgfl-MluI



[View online »](#)

Cloning Scheme:

Plasmid Map:


ACCN: NM_001042632

ORF Size: 456 bp

OTI Disclaimer: The molecular sequence of this clone aligns with the gene accession number as a point of reference only. However, individual transcript sequences of the same gene can differ through naturally occurring variations (e.g. polymorphisms), each with its own valid existence. This clone is substantially in agreement with the reference, but a complete review of all prevailing variants is recommended prior to use. [More info](#)

OTI Annotation: This clone was engineered to express the complete ORF with an expression tag. Expression varies depending on the nature of the gene.

Components:	The ORF clone is ion-exchange column purified and shipped in a 2D barcoded Matrix tube containing 10ug of transfection-ready, dried plasmid DNA (reconstitute with 100 ul of water).
Reconstitution Method:	<ol style="list-style-type: none">1. Centrifuge at 5,000xg for 5min.2. Carefully open the tube and add 100ul of sterile water to dissolve the DNA.3. Close the tube and incubate for 10 minutes at room temperature.4. Briefly vortex the tube and then do a quick spin (less than 5000xg) to concentrate the liquid at the bottom.5. Store the suspended plasmid at -20°C. The DNA is stable for at least one year from date of shipping when stored at -20°C.
RefSeq:	<u>NM_001042632.3</u>
RefSeq Size:	3166 bp
RefSeq ORF:	459 bp
Locus ID:	90203
Cytogenetics:	20q13.12
Protein Families:	Druggable Genome
Gene Summary:	This gene encodes a member of the sorting nexin family. Members of this family contain a phox (PX) domain, which is a phosphoinositide binding domain, and are involved in intracellular trafficking. This protein does not contain a coiled coil region, like some family members. The specific function of this protein has not been determined. Multiple transcript variants encoding distinct isoforms have been identified for this gene. [provided by RefSeq, Jul 2008]