

Product datasheet for **RG223994**

PQBP1 (NM_001032382) Human Tagged ORF Clone

Product data:

Product Type: Expression Plasmids
Product Name: PQBP1 (NM_001032382) Human Tagged ORF Clone
Tag: TurboGFP
Symbol: PQBP1
Synonyms: MRX2; MRX55; MRXS3; MRXS8; NPW38; RENS1; SHS
Mammalian Cell Selection: Neomycin
Vector: pCMV6-AC-GFP (PS100010)
E. coli Selection: Ampicillin (100 ug/mL)
ORF Nucleotide Sequence: >RG223994 representing NM_001032382
Red=Cloning site Blue=ORF Green=Tags(s)

TTTTGTAATACGACTCACTATAGGGCGGCCGGAATTCGTCGACTGGATCCGGTACCGAGGAGATCTGCC
GCC**CGATCGCC**

ATGCCGCTGCCCGTTGCGCTGCAGACCCGCTTGGCCAAGAGAGGCATCCTCAAACATCTGGAGCCTGAAC
CAGAGGAAGAGATCATTGCCGAGGACTATGACGATGATCCTGTGGACTACGAGGCCACCAGGTTGGAGGG
CCTACCACCAAGCTGGTACAAGGTGTTGACCCCTTCTGCGGGCTCCCTTACTACTGGAATGCAGACACA
GACCTTGTATCCTGGCTCTCCCCACATGACCCCAACTCCGTGGTTACCAAATCGGCCAAGAAGCTCAGAA
GCAGTAATGCAGATGCTGAAGAAAAGTTGGACCGGAGCCATGACAAGTCGGACAGGGGCCATGACAAGTC
GGACCGCAGCCATGAGAACTAGACAGGGGCCACGACAAGTCAGACCGGGGCCACGACAAGTCGACAGG
GATCGAGAGCGTGGCTATGACAAGGTAGACAGAGAGAGAGCGAGACAGGGAACGGGATCGGGACCGCG
GGTATGACAAGGCAGACCGGGAAGAGGGCAAAGAACGGCGCCACCATCGCCGGGAGGAGCTGGCTCCCTA
TCCAAGAGCAAGAAGGCAGTAAGCCGAAAGGATGAAGAGTTAGACCCCATGGACCCTAGCTCATACTCA
GACGCCCCCGGGGCACGTGGTCAACAGGACTCCCAAGCGGAATGAGGCCAAGACTGGCGCTGACACCA
CAGCAGCTGGGCCCTCTCCAGCAGCGGCCGTATCCATCCCCAGGGGCTGTGCTCCGGGCAATGCAGA
GGCCTCCCGAACCAAGCAGCAGGAT

ACGCGTACGCGGCCGCTCGAG - GFP Tag - GTTTAA



[View online »](#)

Protein Sequence: >RG223994 representing NM_001032382
Red=Cloning site Green=Tags(s)

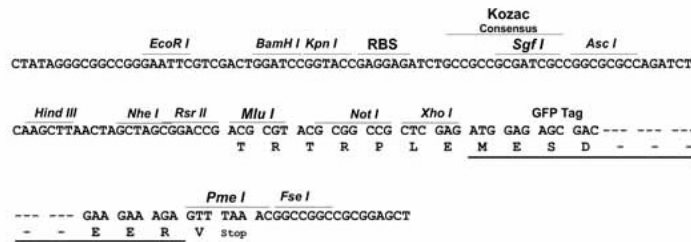
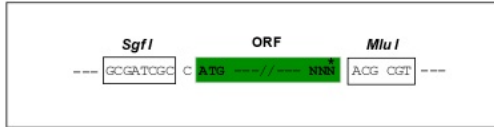
MPLPVALQTRLAKRGILKHLEPEPEEEIIAEDYDDDPVDYEATRLEGLPPSWYKVFDPSCGLPYWNADT
 DLVSWLSPHPNSVVTSAKCLRSSNADAEKLRSHDKSDRGHDKSDRSHEKLRGHDKSDRGHDKSDR
 DRERGYDKVDRERDRERDRDRGYDKADREEGKERRHHRREELAPYPKSKKAVSRKDEELDPMDPSSYS
 DAPRGTWSTGLPKRNEAKTGADTTAAGPLFQQRYPYSPGAVLRANAASRTKQQD

TRTRPLE - GFP Tag - V

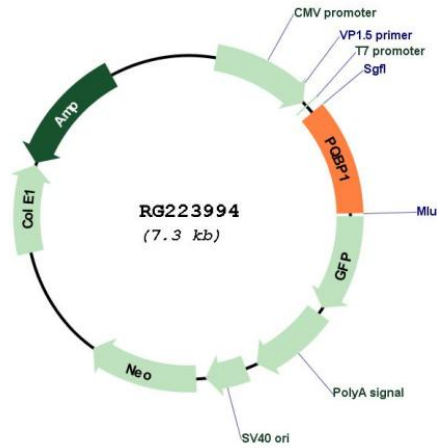
Restriction Sites: SgfI-MluI

Cloning Scheme:

Cloning sites used for ORF Shutting:



Plasmid Map:



ACCN: NM_001032382

ORF Size: 795 bp

| | |
|-------------------------------|---|
| OTI Disclaimer: | The molecular sequence of this clone aligns with the gene accession number as a point of reference only. However, individual transcript sequences of the same gene can differ through naturally occurring variations (e.g. polymorphisms), each with its own valid existence. This clone is substantially in agreement with the reference, but a complete review of all prevailing variants is recommended prior to use. More info |
| OTI Annotation: | This clone was engineered to express the complete ORF with an expression tag. Expression varies depending on the nature of the gene. |
| Components: | The ORF clone is ion-exchange column purified and shipped in a 2D barcoded Matrix tube containing 10ug of transfection-ready, dried plasmid DNA (reconstitute with 100 ul of water). |
| Reconstitution Method: | <ol style="list-style-type: none">1. Centrifuge at 5,000xg for 5min.2. Carefully open the tube and add 100ul of sterile water to dissolve the DNA.3. Close the tube and incubate for 10 minutes at room temperature.4. Briefly vortex the tube and then do a quick spin (less than 5000xg) to concentrate the liquid at the bottom.5. Store the suspended plasmid at -20°C. The DNA is stable for at least one year from date of shipping when stored at -20°C. |
| RefSeq: | NM_001032382.2 |
| RefSeq Size: | 1082 bp |
| RefSeq ORF: | 798 bp |
| Locus ID: | 10084 |
| UniProt ID: | O60828 |
| Cytogenetics: | Xp11.23 |
| Protein Families: | Transcription Factors |
| Protein Pathways: | Spliceosome |
| Gene Summary: | This gene encodes a nuclear polyglutamine-binding protein that is involved with transcription activation. The encoded protein contains a WW domain. Mutations in this gene have been found in patients with Renpenning syndrome 1 and other syndromes with X-linked cognitive disability. Multiple alternatively spliced transcript variants that encode different protein isoforms have been described for this gene.[provided by RefSeq, Nov 2009] |