

Product datasheet for **RG223974**

alpha 1b Adrenergic Receptor (ADRA1B) (NM_000679) Human Tagged ORF Clone

Product data:

Product Type:	Expression Plasmids
Product Name:	alpha 1b Adrenergic Receptor (ADRA1B) (NM_000679) Human Tagged ORF Clone
Tag:	TurboGFP
Symbol:	ADRA1B
Synonyms:	ADRA1; ALPHA1BAR
Mammalian Cell Selection:	Neomycin
Vector:	pCMV6-AC-GFP (PS100010)
E. coli Selection:	Ampicillin (100 ug/mL)



[View online »](#)

ORF Nucleotide Sequence:

>RG223974 representing NM_000679
 Red=Cloning site Blue=ORF Green=Tags(s)

TTTTGTAATACGACTCACTATAGGGCGGCCGGAATTCGTCGACTGGATCCGGTACCGAGGAGATCTGCC
 GCC**CGGATCGCC**

ATGAATCCCGACCTGGACACCGGCCACAACACATCAGCACCTGCCCACTGGGAGAGTTGAAAAATGCCA
 ACTTCACTGGCCCAACAGACCTCGAGCAACTCCACACTGCCCACTGGACATCACCAGGGCCATCTC
 TGTGGGCTGGTCTGGGCGCCTTCATCCTCTTTGCCATCGTGGGCAACATCCTAGTCATCTTGTCTGTG
 GCCTGCAACCGGCACCTGCGGACGCCACCAACTACTTATTGTCAACCTGGCCATGGCCGACCTGCTGT
 TGAGTTCACCGTCTGCCCTTCTCAGCGGCCCTAGAGGTGCTCGGCTACTGGGTGCTGGGGCGGATCTT
 CTGTGACATCTGGGACGCGTGGATGTCTGTGCTGCACAGCTCCATTCTGAGCCTGTGCGCCATCTCC
 ATCGATCGCTACATCGGGGTGCGTACTCTCTGCAGTATCCACGCTGGTCAACCGGAGGAAGGCCATCT
 TGGCGTCTCAGTGTCTGGGTCTTGTCCACCGTCATCTCCATCGGGCCTCTCCTGGGTGGAAGGAGCC
 GGCACCAACGATGACAAGGAGTGGGGTCCCGAAGAACCCTTCTATGCCCTTCTCTCTCTCTGGGC
 TCCTTCTACATCCCTCTGGCGGTATTCTAGTCATGTACTGCCGTGTCTATATAGTGCCAAAGAGAACCA
 CCAAGAACCTAGAGGCAGGAGTCATGAAGGAGATGTCCAACCTCAAGGAGCTGACCTGAGGATCCATTC
 CAAGAACCTTACGAGGACACCTTAGCAGTACCAAGGCCAAGGGCCACAACCCAGGAGTTCATAGCT
 GTCAAACCTTTTAAAGTTCTCCAGGGAAAAGAAAGCAGTAAGACGTTGGGCATTGTGGTCCGGTATGTTCA
 TCTTGTCTGGCTACCCTTCTTCATCGCTCTACCGCTTGGCTCCTTGTCTCCACCCTGAAGCCCCCGA
 CGCCGTGTTCAAGGTGGTGTCTGGTGGGCTACTTCAACAGCTGCCTCAACCCATCATCTACCCATGC
 TCCAGCAAGGAGTCAAGCGCGCTTTCGTGCGCATCCTCGGTGCCAGTGCCGCGCCGCGGCCGCGCC
 GACGCCGCGCCGCGCTGCCTGGGCGGCTGCGCTACACCTACCGCCGTGGACGCGCGCGGCTCGCT
 GGAGCGCTCGAGTCGCGCAAGGACTCGCTGGACGACAGCGGCAGCTGCCTGAGCGGCAGCCAGCGGACC
 TTGCCCTCGGCTCGCCGAGCCCGGCTACCTGGGCGCGGCGGCCACCGCCAGTCGAGCTGTGCGCCT
 TCCCGAGTGGAAGGCGCCCGGCGCCTCTGAGCCTGCCCGCGCTGAGCCCCCGGCCGCGCGGCCG
 CCACGACTCGGGCCGCTCTTACCTTCAAGCTCCTGACCGAGCCGAGAGCCCCGGGACCGACGGCGGC
 GCCAGCAACGGAGGCTGCGAGGCCGCGGCCGACGTGGCCAACGGGAGCCGGGCTTCAAAGCAACATGC
 CCCTGGCGCCCGGCAGTTT

ACGCGTACGCGGCCGCTCGAG - GFP Tag - GTTTAA

Protein Sequence:

>RG223974 representing NM_000679
 Red=Cloning site Green=Tags(s)

MNPDLDTGHNTSAPAHWELKKNANFTGPNQTSNSTLPQLDITRAISVGLVLFILFAIVGNILVILSV
 ACNRHLRTPNTYFIVNLAMADLLLSTVLPFSAALEVLGYWVLRIFCDIWAADVLCCTASILSLCAIS
 IDRYIGVRYSLQYPTLVTRRKAILALLSVWLSTVISIGPLLGWKEPAPNDKECGVTEEPFYALFSSLG
 SFYIPLAVILVMYCRVYIVAKRTTKNLEAGVMKEMSNSKELTLRIHKNFHEDTSSSTKAKGHNPRSSIA
 VKLKFKSREKKAATLGIIVGMFILCWLPFFIALPLGSLFSTLKPDAVFKVFWLGYFNCLNPIIYPC
 SSKEFKRAFVRIILGCQCRGRRRRRRRRLGGCAYTYRPWTRGGSLERSQSRKDSLDDSGSCLSGSQRT
 LPSASPSGYLGRGAPPVELCAFPEWKAPGALLSLPAPEPPGRRGRHDSGPLFTFKLLTEPESPGTDGG
 ASNGGCEAAADVANGQPFGKSNMPLAPGQF

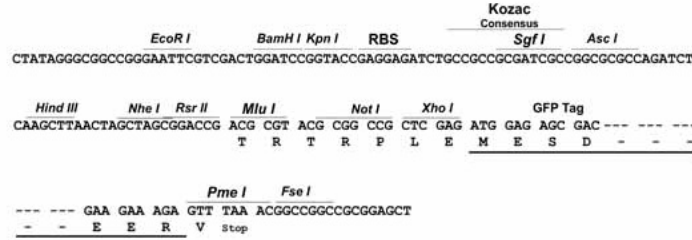
TRTRPLE - GFP Tag - V

Restriction Sites:

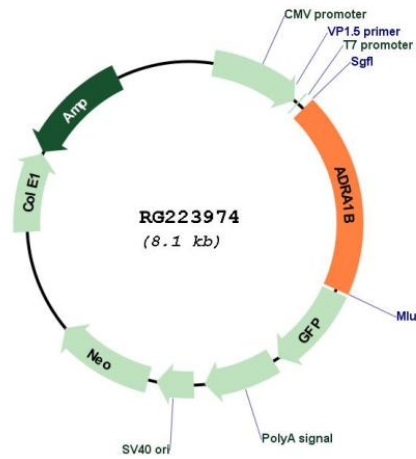
Sgfl-MluI

Cloning Scheme:

Cloning sites used for ORF Shutting:



Plasmid Map:



ACCN:	NM_000679
ORF Size:	1560 bp
OTI Disclaimer:	The molecular sequence of this clone aligns with the gene accession number as a point of reference only. However, individual transcript sequences of the same gene can differ through naturally occurring variations (e.g. polymorphisms), each with its own valid existence. This clone is substantially in agreement with the reference, but a complete review of all prevailing variants is recommended prior to use. More info
OTI Annotation:	This clone was engineered to express the complete ORF with an expression tag. Expression varies depending on the nature of the gene.
Components:	The ORF clone is ion-exchange column purified and shipped in a 2D barcoded Matrix tube containing 10ug of transfection-ready, dried plasmid DNA (reconstitute with 100 ul of water).
Reconstitution Method:	<ol style="list-style-type: none">1. Centrifuge at 5,000xg for 5min.2. Carefully open the tube and add 100ul of sterile water to dissolve the DNA.3. Close the tube and incubate for 10 minutes at room temperature.4. Briefly vortex the tube and then do a quick spin (less than 5000xg) to concentrate the liquid at the bottom.5. Store the suspended plasmid at -20°C. The DNA is stable for at least one year from date of shipping when stored at -20°C.
RefSeq:	NM_000679.3 , NP_000670.1
RefSeq Size:	2272 bp
RefSeq ORF:	1563 bp
Locus ID:	147
UniProt ID:	P35368
Cytogenetics:	5q33.3
Protein Families:	Druggable Genome, GPCR, Transmembrane
Protein Pathways:	Calcium signaling pathway, Neuroactive ligand-receptor interaction, Vascular smooth muscle contraction
Gene Summary:	Alpha-1-adrenergic receptors (alpha-1-ARs) are members of the G protein-coupled receptor superfamily. They activate mitogenic responses and regulate growth and proliferation of many cells. There are 3 alpha-1-AR subtypes: alpha-1A, -1B and -1D, all of which signal through the Gq/11 family of G-proteins and different subtypes show different patterns of activation. This gene encodes alpha-1B-adrenergic receptor, which induces neoplastic transformation when transfected into NIH 3T3 fibroblasts and other cell lines. Thus, this normal cellular gene is identified as a protooncogene. This gene comprises 2 exons and a single large intron of at least 20 kb that interrupts the coding region. [provided by RefSeq, Jul 2008]