

Product datasheet for **RG223931**

P2Y2 (P2RY2) (NM_176072) Human Tagged ORF Clone

Product data:

Product Type: Expression Plasmids
Product Name: P2Y2 (P2RY2) (NM_176072) Human Tagged ORF Clone
Tag: TurboGFP
Symbol: P2Y2
Synonyms: HP2U; P2RU1; P2U; P2U1; P2UR; P2Y2; P2Y2R
Mammalian Cell Selection: Neomycin
Vector: pCMV6-AC-GFP (PS100010)
E. coli Selection: Ampicillin (100 ug/mL)
ORF Nucleotide Sequence: >RG223931 representing NM_176072
Red=Cloning site Blue=ORF Green=Tags(s)

TTTTGTAATACGACTCACTATAGGGCGGCCGGAATTCGTCGACTGGATCCGGTACCGAGGAGATCTGCC
 GCCCGCATCGCC

ATGGCAGCAGACCTGGGCCCTGGAATGACACCATCAATGGCACCTGGGATGGGGATGAGCTGGGCTACA
 GGTGCCGCTTCAACGAGGACTTCAAGTACGTGCTGCTGCCTGTGTCTACGGCGTGGTGTGCGTGCCTGG
 GCTGTGTCTGAACGCCGTGGCGCTCTACATCTTCTGTGCCGCTCAAGACCTGGAATGCGTCCACCACA
 TATATGTTCCACCTGGCTGTGTCTGATGCACTGTATGCGGCTCCCTGCCGCTGCTGGTCTATTACTACG
 CCCGCGCGACCACTGGCCCTTACGACGGTGTCTGCAAGCTGGTGGCGTTCCTCTTACACCAACCT
 TTAAGTGCATCCTCTTCTCCTCAGTGCATCAGCGTGCACCGGTGTCTGGGCGTCTTACGACCTCTGCGC
 TCCTTGGCTGGGGCCGGCCCGCTACGCTCGCCGGTGGCCGGGGCCGTGTGGGTGTTGGTGTGGCT
 GCCAGGCCCGTGTCTACTTTGTACACCAGCGCGCGGGGGCCGTAACCTGCCACGACACCTC
 GGCACCCGAGCTTTCAGCCGCTTCGTGGCCTACAGCTCAGTCATGCTGGGCTGCTTTCGCGGTGCC
 TTTGCCGTCATCCTTGTCTGTTACGTGCTATGGCTCGGCGACTGCTAAAGCCAGCTACGGGACCTCGG
 GCGGCTGCCTAGGGCAAGCGCAAGTCCGTGCGCACCATCGCGTGGTGTGCTGGTGTCTTCGCCCTGTG
 CTTCTGCCATTCCACGTCAACCGCACCTCTACTACTCCTTCCGCTCGTGGACCTCAGCTGCCACACC
 CTCACGCCATCAACATGGCCTACAAGTTACCCGGCCGCTGGCCAGTGTAAAGTTGCCTTGACCCCG
 TGCTCTACTTCCCTGGCTGGGACAGAGCTCGTACGCTTTGCCGAGATGCCAAGCCACCCACTGGCCCCAG
 CCCTGCCACCCCGGCTCGCCGAGGCTGGGCTGCGCAGATCCGACAGAAGTACATGCAGAGGATAGAA
 GATGTGTTGGCAGCAGTGGGACTCTAGGCGGACAGAGTCCACGCCGGTGGTAGCGAGAACAATAAGG
 ACATTGGCTG

ACGCGTACGCGGCCGCTCGAG - GFP Tag - GTTTAA



[View online »](#)

Protein Sequence: >RG223931 representing NM_176072
 Red=Cloning site Green=Tags(s)

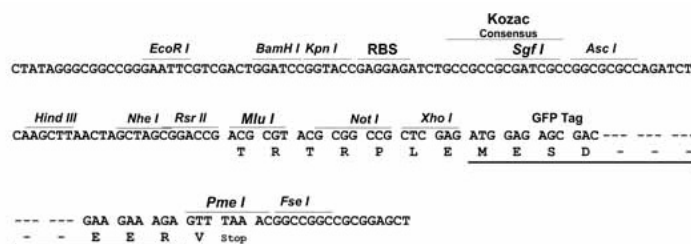
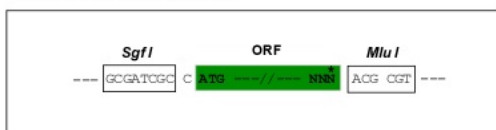
MAADLGPWNDTINGTWDGDELGYRCRFNEDFKYVLLPVSYGVVCPGLCLNAVALYIFLCRLKTWNASTT
 YMFHLAVSDALYAASLPLLVYYYARGDHPFSTVLCKLVRFLFYTNLYCSILFLTCISVHRCLGVLRLPLR
 SLRWGRARYARRVAGAVWLVLACQAPVLYFVTT SARGGRVTCHDTSAPELFSRFVAYSSVMLGLLFVAVP
 FAVILVCYVLMARRLLKPAYGTSGGLPRAKRKSVRTIAVVLAVFALCFLPFHVTRTLYYSFRSLDLSCHT
 LNAINMAYKVTRPLASANSCLDPVLYFLAGQRLVRFARDAKPPTGSPATPARRRLGLRRSDRTDMQRIE
 DVLGSSSEDSRRTESTPAGESNTKDIRL

TRTRPLE - GFP Tag - V

Restriction Sites: SgfI-MluI

Cloning Scheme:

Cloning sites used for ORF Shuttling:



ACCN: NM_176072

ORF Size: 1131 bp

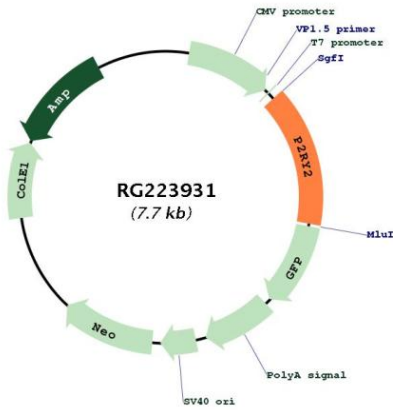
OTI Disclaimer: Due to the inherent nature of this plasmid, standard methods to replicate additional amounts of DNA in E. coli are highly likely to result in mutations and/or rearrangements. Therefore, OriGene does not guarantee the capability to replicate this plasmid DNA. Additional amounts of DNA can be purchased from OriGene with batch-specific, full-sequence verification at a reduced cost. Please contact our customer care team at custsupport@origene.com or by calling 301.340.3188 option 3 for pricing and delivery.

The molecular sequence of this clone aligns with the gene accession number as a point of reference only. However, individual transcript sequences of the same gene can differ through naturally occurring variations (e.g. polymorphisms), each with its own valid existence. This clone is substantially in agreement with the reference, but a complete review of all prevailing variants is recommended prior to use. [More info](#)

OTI Annotation: This clone was engineered to express the complete ORF with an expression tag. Expression varies depending on the nature of the gene.

Components:	The ORF clone is ion-exchange column purified and shipped in a 2D barcoded Matrix tube containing 10ug of transfection-ready, dried plasmid DNA (reconstitute with 100 ul of water).
Reconstitution Method:	<ol style="list-style-type: none">1. Centrifuge at 5,000xg for 5min.2. Carefully open the tube and add 100ul of sterile water to dissolve the DNA.3. Close the tube and incubate for 10 minutes at room temperature.4. Briefly vortex the tube and then do a quick spin (less than 5000xg) to concentrate the liquid at the bottom.5. Store the suspended plasmid at -20°C. The DNA is stable for at least one year from date of shipping when stored at -20°C.
RefSeq:	NM_176072.3
RefSeq Size:	2681 bp
RefSeq ORF:	1134 bp
Locus ID:	5029
UniProt ID:	P41231
Cytogenetics:	11q13.4
Protein Families:	Druggable Genome, GPCR, Transmembrane
Protein Pathways:	Neuroactive ligand-receptor interaction
Gene Summary:	The product of this gene belongs to the family of P2 receptors, which is activated by extracellular nucleotides and subdivided into P2X ligand-gated ion channels and P2Y G-protein coupled receptors. This family has several receptor subtypes with different pharmacological selectivity, which overlaps in some cases, for various adenosine and uridine nucleotides. This receptor, found on many cell types, is activated by ATP and UTP and is reported to be overexpressed on some cancer cell types. It is involved in many cellular functions, such as proliferation, apoptosis and inflammation. Three transcript variants encoding the same protein have been identified for this gene. [provided by RefSeq, Mar 2013]

Product images:



Circular map for RG223931