

Product datasheet for **RG223877**

NALP5 (NLRP5) (NM_153447) Human Tagged ORF Clone

Product data:

Product Type:	Expression Plasmids
Product Name:	NALP5 (NLRP5) (NM_153447) Human Tagged ORF Clone
Tag:	TurboGFP
Symbol:	NALP5
Synonyms:	CLR19.8; MATER; NALP5; PAN11; PYPAF8
Mammalian Cell Selection:	Neomycin
Vector:	pCMV6-AC-GFP (PS100010)
E. coli Selection:	Ampicillin (100 ug/mL)
ORF Nucleotide Sequence:	>RG223877 representing NM_153447 Red=Cloning site Blue=ORF Green=Tags(s)

TTTTGTAATACGACTCACTATAGGGCGGCCGGAATTCGTCGACTGGATCCGGTACCGAGGAGATCTGCC
GCC**CGATCGCC**

ATGAAGGTTGCAGGAGGACTTGAACCTGGAGCTGCTGCTCTCAGCATCACCACGTGCTCTTGTCATCTTTCCACAGGTCCTACTTGTCTATATTACCAAAGAATCCACTTTTCCCCAAAACCTGAGCTCTCA
GCCTTGTATCAAGATGGAAGGAGACAAATCGCTCACCTTTCCAGCTACGGGCTGCAATGGTGTCTCTAT
GAGCTAGACAAGGAAGAATTTAGACATCAAGGAATTAATAAGAAGAAATCTTCAGAATCGACCACAT
GCTCTATCCACAGTTTGAATCGAGAATGCCAACGTGGAATGTCTGGCACTCCTCTTGATGAGTATTA
TGGAGCATCGCTGGCCTGGGCTACGTCCATTAGCATCTTTGAAAACATGAACCTGCGAACCTCTCGGAG
AAGGCACGGGATGACATGAAAAGACATTCACCAGAAGATCCTGAAGCAACGATGACTGACCAAGGACCAA
GCAAGGAAAAAGTGCCAGGAATTTACAAGCTGTGCAACAAGATAGTGCCACAGCTGCAGAGACAAAAGA
ACAAGAAATTTACAAGCTATGGAACAAGAAGGTGCCACAGCAGCAGAGACAGAAGAACAAGAAATTTCA
CAAGCTATGGAACAAGAAGGTGCCACAGCAGCAGAGACAGAAGAACAAGGACATGGAGGTGACACATGGG
ACTACAAGAGTCACGTGATGACCAAAATTCGCTGAGGAGGAGGTACGTAGTGTGTTGAAAACACTGC
TGCTGACTGGCCGAAAATGCAAACGTTGGCTGGTGCTTTTGATTACAGACCGGTGGGGCTCCGGCCTCGC
ACGGTGGTTCTGCACGGAAGTCAGGAATGGGAATCGGCTTAGCCAGAAGGATCGTGTGTGCTGGG
CGCAAGGTGACTCTACCAGGGAATGTTCTCCTACGTCTTCTCCTCCCGTTAGAGAGATGCAGCGGAA
GAAGGAGAGCAGTGTACAGAGTTCATCTCCAGGAGTGCCAGACTCCCAGGCTCCGGTACCGGAGATC
ATGTCGCCAGCAGAAAGGCTGTTGTTTCATCATTGACGGTTTCGATGACCTGGGCTCTGCTCAACAATG
ACACAAAGCTCTGCAAAGACTGGGCTGAGAAGCAGCCTCCGTTACCCTCATACGCAGTCTGCTGAGGAA
GGTCTGCTCCCTGAGTCTTCTGATCGTCACCGTCAGAGACGTGGGCACAGAGAAGCTCAAGTCAGAG
GTCGTGTCTCCCGTTACCTGTTAGTTAGAGGAATCTCCGGGGAACAAGAATCCACTTGCTCCTTGAGC
GCGGGATTGGTGAGCATCAGAAGACACAAGGGTTGCGTGCGATCATGAACAACCGTGAGCTGCTCGACCA
GTGCCAGGTGCCCGCTGGGCTCTCATCTGCTGGCCCTGCAGCTGCAGGACGTGGTGGGGAGAGC



GTCGCCCCCTTCAACCAACGCTCACAGCCTGCACGCCGCTTTTGTGTTTCATCAGCTCACCCCTCGAG
GCGTGGTCCGGCCTGTCTCAATCTGGAGGAAAGAGTTGTCTGAAGCGCTTCTGCCGTATGGCTGTGGA
GGGAGTGTGGAATAGGAAGTCAAGTGTGTTGACGGTGACGACCTCATGGTTCAAGGACTCGGGGAGTCTGAG
CTCCGTGCTCTGTTTACATGAACATCCTTCTCCAGACAGCCACTGTGAGGAGTACTACACCTTCTTCC
ACCTCAGTCTCCAGGACTTCTGTGCCGCTTGTACTACGTGTTAGAGGGCCTGAAATCGAGCCAGCTCT
CTGGCCTCTGTACGTTGAGAAGACAAAGAGTCCATGGAGCTTAAACAGGCAGGCTTCCATATCCACTCG
CTTTGGATGAAGCGTTTCTTGTGGCCTCGTGAGCGAAGACGTAAGGAGGCCACTGGAGGTCTGCTGG
GCTGTCCCGTTCCCTGGGGTGAAGCAGAAGCTTCTGCACTGGGTCTCTGTTGGGTGAGCAGCCTAA
TGCCACCACCCAGGAGACACCTGGACGCTTCCACTGTCTTTTCGAGACTCAAGACAAAGAGTTTGT
CGCTTGGCATTAAACAGCTTCCAAGAAGTGTGGCTCCGATTAACCAGAACCTGGACTTGATAGCATCTT
CCTTCTGCCTCCAGCACTGTCCGTATTTGCGGAAAATTCGGGTGGATGTCAAAGGATCTTCCCAAGAGA
TGAGTCCGCTGAGGCATGCTGTGGTCCCTCTATGGATGCGGGATAAGACCCTCATTGAGGAGCAGTGG
GAAGATTTCTGCTCCATGCTTGGCACCACCCACCTGCGGCAGCTGGACCTGGCAGCAGCATCTGA
CAGAGCGGCCATGAAGACCCTGTGTGCCAAGCTGAGGCATCCCACCTGCAAGATACAGACCCTGATGTT
TAGAAATGCACAGATTACCCCTGGTGTGCAGCACCTCTGGAGAATCGTCATGGCCAAACCGTAACCTAAGA
TCCTCAACTTGGGAGGCACCCACTGAAGGAAGAGGATGAAGGATGGCGTGTGAAGCCTAAAACACC
CAAAATGTTTGTGGAGTCTTTGAGGCTGGATTGCTGTGGATTGACCCATGCCTGTTACCTGAAGATCTC
CCAAATCCTTACGACCTCCCCAGCCTGAAATCTCTGAGCCTGGCAGGAAACAAGGTGACAGACCAGGGA
GTAATGCCTCTCAGTGTGCTTGGAGTCTCCAGTGCGCCCTGCAGAAGCTGATACTGGAGGACTGTG
GCATCACAGCCACGGGTTGCCAGAGTCTGGCCTCAGCCCTCGTCAGCAACCGGAGCTTGACACACCTGTG
CCTATCCAACAACAGCCTGGGGAACGAAGGTGAAATCTACTGTGTCGATCCATGAGGCTTCCCCACTGT
AGTCTGCAGAGGCTGATGCTGAATCAGTGCCACCTGGACACGGCTGGCTGTGGTTTTCTTGCACCTGCGC
TTATGGTAACCTCATGGCTGACGCACCTGAGCCTTAGCATGAACCTGTGGAAGACAATGGCGTGAAGCT
TCTGTGCGAGGTCATGAGAGAACCATCTTGTCTCCAGGACCTGGAGTTGGTAAAGTGCATCTCACC
GCCGCGTGTGTGAGAGTCTGCTGTGTGATCTCGAGGAGCAGACACCTGAAGAGCCTGGATCTCACGG
ACAATGCCTGGGTGACGGTGGGGTTGCTGCGCTGTGCGAGGGACTGAAGCAAAAGAACAGTGTCTGGC
GAGACTCGGGTTGAAGGCATGTGGACTGACTTCTGATTGCTGTGAGGCACTCTCCTTGGCCCTTCTCTGC
AACCGGCATCTGACCAGTCTAACCTGGTGCAGAATAACTTCAGTCCCAAAGGAATGATGAAGCTGTGTT
CGGCCTTTCCTGCTCCACGTCTAACTTACAGATAATTGGGCTGTGGAATGGCAGTACCCTGTGCAAA
AAGGAAGCTGCTGGAGGAAGTGCAGTACTCAAGCCCCGAGTCGTAATTGACGGTAGTTGGCATTCTTT
GATGAAGATGACCGGACTGGTGGAAAAAC

ACGCGTACGCGGCCGCTCGAG - GFP Tag - GTTTAA

Protein Sequence: >RG223877 representing NM_153447
Red=Cloning site Green=Tags(s)

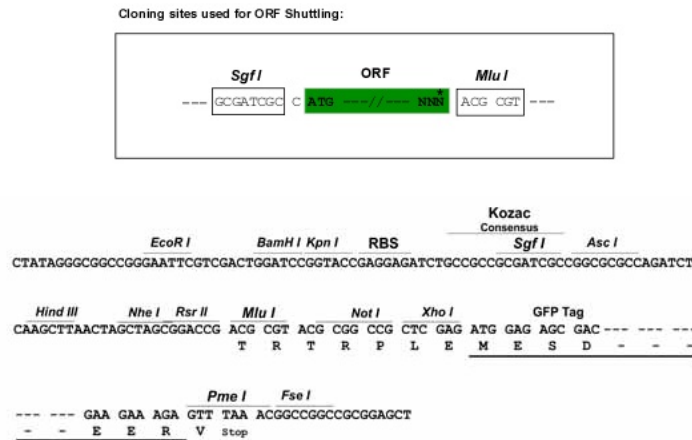
MKVAGGLELGAAALLSAPRALVTLSTGPTCSILPKNPLFPQNLSSQPCIKMEGDKSLTFSSYGLQWCLY
 ELDKEEFQTFKELLKKKSSESTTCSIPQFEIENANVECLALLLHEYYGASLAWATSISIFENMNLRTLSE
 KARDDMKRHSPEDPEATMTDQGPSKEKVPGISQAVQQDSATAAETKEQEISQAMEQEGATAAETEEQEIS
 QAMEQEGATAAETEEQGHGGDTWDYKSHVMTKFAEEEDVRRSFENTAADWPQMQLAGAFSDRWGFRPR
 TVVLHGKSGIGKSALARRIVLVCWAQGGLYQGMFSYVFFLPVREMQRKKESSVTEFISREWPDSDQAPVTEI
 MSRPERLLFIIDGFDDLGSVLNNDTKLCKDWAEEKQPPFTLIRSLLRKLVLPEFSLIVTVRVDVTEKLSSE
 VVSPRYLLVRGISGEQRIHLLLERGIGEHQKTQGLRAIMNRELLDQCQVPAVGSLICVALQLQDVVGES
 VAPFNQTLTGLHAAFVFHQLTPRGVRRCLNLEERVVLRKRCRMAVEGVWNRKSVFDGDDL MVQGLGESE
 LRALFHMNILLPDSHCEEYTTFFHL SLQDFCAALYYVLEGLEIEPALCPLYVEKTKRSMELKQAGFHIHS
 LWMKRF LFGVSEDVRRPLEVLLGCPVPLGVKQKLLHWVSLLGQQPNATTPGDTLDAFHCLFETQDKEFV
 RLALNSFQEVWLPINQNLDLIASSFCLQHCPYLKIRVDVKGIFPRDESAEACPVVPLWMRDKTLIEEQW
 EDFCSMLGTHPHLRQLDLGSSILTERAMKTLCAKLRHPTCKIQTLMFRNAQITPGVQHLWRIVMANRNL
 SLNLGGTHLKEEDVRMACEALKHPKCLLESLRLDCCGLTHACYLKISQILTTSPSLKSLSLAGNKVTDQG
 YMPLSDALRVSQCALQKLILEDGCIATGCQSLASALVSNRSLTHLCLSNNSLGNNEGVNLLCRSMRLPHC
 SLQRLMLNQCHLDTAGCGFLALALMGNSWLTHLSL SMNPVEDNGVKLLCEVMREPSCHLQDLELVKCHLT
 AACCESLSCVIRSRLKSLDLTDNALGDGGVAALCEGLKQKNSVLAARLGLKACGLTSDCCCEALSLALSC
 NRHLTSLNLVQNNFSPKGMKLCSAFACPTSNLQIIGLWKWQYPVQIRKLLLEEVQLLKPRVVIDGSWHSF
 DEDDRYWWKN

TRTRPLE - GFP Tag - V

Restriction Sites:

SgfI-MluI

Cloning Scheme:

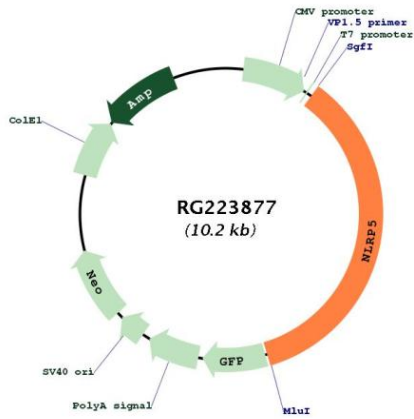


ACCN: NM_153447

ORF Size: 3600 bp

OTI Disclaimer:	<p>Due to the inherent nature of this plasmid, standard methods to replicate additional amounts of DNA in E. coli are highly likely to result in mutations and/or rearrangements. Therefore, OriGene does not guarantee the capability to replicate this plasmid DNA. Additional amounts of DNA can be purchased from OriGene with batch-specific, full-sequence verification at a reduced cost. Please contact our customer care team at custsupport@origene.com or by calling 301.340.3188 option 3 for pricing and delivery.</p> <p>The molecular sequence of this clone aligns with the gene accession number as a point of reference only. However, individual transcript sequences of the same gene can differ through naturally occurring variations (e.g. polymorphisms), each with its own valid existence. This clone is substantially in agreement with the reference, but a complete review of all prevailing variants is recommended prior to use. More info</p>
OTI Annotation:	This clone was engineered to express the complete ORF with an expression tag. Expression varies depending on the nature of the gene.
Components:	The ORF clone is ion-exchange column purified and shipped in a 2D barcoded Matrix tube containing 10ug of transfection-ready, dried plasmid DNA (reconstitute with 100 ul of water).
Reconstitution Method:	<ol style="list-style-type: none"> 1. Centrifuge at 5,000xg for 5min. 2. Carefully open the tube and add 100ul of sterile water to dissolve the DNA. 3. Close the tube and incubate for 10 minutes at room temperature. 4. Briefly vortex the tube and then do a quick spin (less than 5000xg) to concentrate the liquid at the bottom. 5. Store the suspended plasmid at -20°C. The DNA is stable for at least one year from date of shipping when stored at -20°C.
RefSeq:	NM_153447.4 , NP_703148.4
RefSeq Size:	3885 bp
RefSeq ORF:	3603 bp
Locus ID:	126206
UniProt ID:	P59047
Cytogenetics:	19q13.43
Gene Summary:	The protein encoded by this gene belongs to the NALP protein family. Members of the NALP protein family typically contain a NACHT domain, a NACHT-associated domain (NAD), a C-terminal leucine-rich repeat (LRR) region, and an N-terminal pyrin domain (PYD). Expression of this gene is restricted to the oocyte. A mouse gene that encodes a maternal oocyte protein, similar to this encoded protein, is required for normal early embryogenesis. [provided by RefSeq, Jul 2008]

Product images:



Circular map for RG223877