

Product datasheet for **RG223869**

CREB5 (NM_004904) Human Tagged ORF Clone

Product data:

Product Type:	Expression Plasmids
Product Name:	CREB5 (NM_004904) Human Tagged ORF Clone
Tag:	TurboGFP
Symbol:	CREB5
Synonyms:	CRE-BPA; CREB-5; CREBPA
Mammalian Cell Selection:	Neomycin
Vector:	pCMV6-AC-GFP (PS100010)
E. coli Selection:	Ampicillin (100 ug/mL)



[View online »](#)

ORF Nucleotide Sequence:

>RG223869 representing NM_004904
 Red=Cloning site Blue=ORF Green=Tags(s)

TTTTGTAATACGACTCACTATAGGGCGGCCGGAATTCGTCGACTGGATCCGGTACCGAGGAGATCTGCC
 GCC**CGCATCGCC**

ATGAATTTGGAGCAGGAGAGGCCGTTTGTCTGCAGTGCCCAAGGCTGCTCCAGCGCTTCCAACAGAGG
 ACCATCTGATGATTCATAGGCACAACATGAAATGACTTTGAAGTTTCCTTCAATAAAAAACAGACAATAT
 GTTATCAGATCAAACCTCCGACCCCAACGAGATTCTGAAGAACTGCGAGGAGGTGGGCTCTTCAGCGAG
 CTGGACTGCTCCCTGGAGCACGAGTTCAGGAAGGCTCAGGAAGAGGAGAGCAGCAAGCGGAATATCTCGA
 TGCATAATGCAGTTGGTGGGGCCATGACGGGGCCCGAACTACCAGCTTAGCAGCGCTCGGCTGCCAA
 CCATGACACCAACGTTGTGATTAGCAAGCCATGCCGTCGCTCAGTCCAGCTCTGTCTACTCAGGCA
 CCTTCCACCAACCGCCAGATCGGGCCTGTCCAGGCTCTCTATCTTCTGCTACATCTCCACAACAGAC
 AGAGACAGCCCATGCCAGCTCCATGCCGGGACCTGCCAACCCCTACAATGCCAGGATCTTCCGCCGT
 CTTGATGCCAATGGAGCGACAAATGTCAGTGAAGTCCAGCATCATGGGGATGCAAGTCCAAATCTCAGC
 AACCCCTGTGCTTCTCCAGGTCAGCCAATGCATTCAGAAGCCAAAATGAGGTTGAAGGCTGCATTGA
 CTCACCACCTGTGCCATGTCAAATGGGAACATGAACACCATGGGACACATGATGGAGATGATGGGCTC
 CCGGACAGGACAGACGCCACACCATCACATGCACTCGCACCCGCATCAGCACCAGACACTGCCACCCAT
 CACCCTTACCCACACCAGCACCAGCACCAGCACACCATCCTCACCTCAACCCCATCACCAGCAGAACC
 ATCCACATCACCCTCCATTCCACCTTATGCACACCCAGCACATCACCAGACCTCGCCACATCCGCC
 CCTGCACACCGGCAACCAAGCACAGTTTACCAGCAACAACAGATGCAGCAACCCAGACAATACAG
 CCACCCAGCCCACAGGGGGCGCCGGCGAAGGTTGGTAGACGAGGATCCGGACGAGAGGGCGCGAAAT
 TTCTGGAACGGAACCGGGCAGCTGCCACCCGCTGCAGACAGAAGAGGAAGTCTGGGTGATGTCATTGGA
 AAAGAAAGCAGAAGAAGTCAACCCAGACAACATGCAGCTTCAGAATGAAGTGTCTATGTTGAAAAATGAG
 GTGGCCAGCTGAAACAGTTGTTGTTAACACATAAAGACTGCCCAATAACAGCCATGCAGAAAGAATCAC
 AAGGATATCTAAGTCCAGAGAGTAGCCCTCCTGTAGTCTGTCCAGCTTGCTCCAGCAACAAGTCAT
 CCAGCATAATACCATCACTACTTCTCATCGGTCAGCGAGGTGGTAGGAAGCTCCACCCTCAGCCAGCTC
 ACCACTCACAGAACAGACCTGAATCCGATTCTT

ACGCGTACGCGGCCGCTCGAG - GFP Tag - GTTTAA

Protein Sequence:

>RG223869 representing NM_004904
 Red=Cloning site Green=Tags(s)

MNLEQERPFVCSAPGCSQRFPTEHLMIHHRKHEMTLKFPSIKTDNMLSDQTPTPTRFLKNCEEVGLFSE
 LDCSLEHEFRKAQEEESSKRNI SMHNAVGGAMTGPGTHQLSSARLPNHDTNVVIQQAMPSPQSSSVITQA
 PSTNRQIGPVPGLSSLLHLHNRQRQPMPASMPGTLPNPTMPGSSAVLMPMERQMSVNSSIMGMQGPNLS
 NPCASPVQPMHSEAKMRLKAALTHHPAAMSNGNMNTMGHMEMMGSRDQTPHHHMHSHPHQHQLPPH
 HPYPHQHQAHPHPQPHHQNHPHHSHSHLHAHPAHHQTSHPPLHTGNQAQVSPATQQMQPTQTIQ
 PPQPTGRRRRVDEDPDERRRFLERNRAAATRCRQKRKVWVMSLEKKAEEELQTNMQLQNEVSMKNE
 VAQLKQLLLTHKDCPITAMQKESQGYLSPESPASPVPACSQQVIQHNTITSSSVSEVVGSSTLSQL
 TTHRTDLNPIL

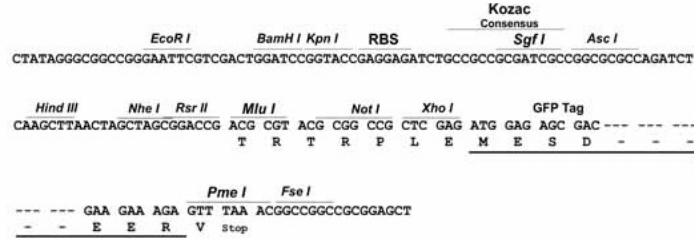
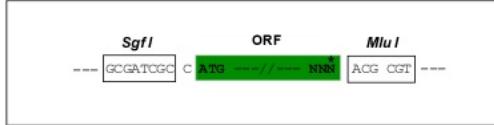
TRTRPLE - GFP Tag - V

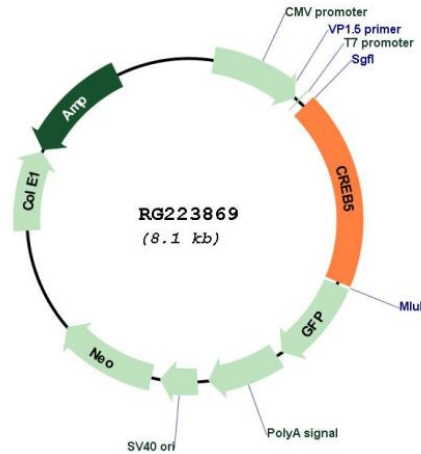
Restriction Sites:

Sgfl-MluI

Cloning Scheme:

Cloning sites used for ORF Shutting:



Plasmid Map:


ACCN: NM_004904

ORF Size: 1503 bp

OTI Disclaimer: The molecular sequence of this clone aligns with the gene accession number as a point of reference only. However, individual transcript sequences of the same gene can differ through naturally occurring variations (e.g. polymorphisms), each with its own valid existence. This clone is substantially in agreement with the reference, but a complete review of all prevailing variants is recommended prior to use. [More info](#)

OTI Annotation: This clone was engineered to express the complete ORF with an expression tag. Expression varies depending on the nature of the gene.

Components: The ORF clone is ion-exchange column purified and shipped in a 2D barcoded Matrix tube containing 10ug of transfection-ready, dried plasmid DNA (reconstitute with 100 ul of water).

Reconstitution Method:	<ol style="list-style-type: none">1. Centrifuge at 5,000xg for 5min.2. Carefully open the tube and add 100ul of sterile water to dissolve the DNA.3. Close the tube and incubate for 10 minutes at room temperature.4. Briefly vortex the tube and then do a quick spin (less than 5000xg) to concentrate the liquid at the bottom.5. Store the suspended plasmid at -20°C. The DNA is stable for at least one year from date of shipping when stored at -20°C.
RefSeq:	NM_004904.3
RefSeq Size:	8213 bp
RefSeq ORF:	1506 bp
Locus ID:	9586
UniProt ID:	Q02930
Cytogenetics:	7p15.1
Domains:	BRLZ, zf-C2H2
Protein Families:	Transcription Factors
Protein Pathways:	Huntington's disease, Prostate cancer
Gene Summary:	The product of this gene belongs to the CRE (cAMP response element)-binding protein family. Members of this family contain zinc-finger and bZIP DNA-binding domains. The encoded protein specifically binds to CRE as a homodimer or a heterodimer with c-Jun or CRE-BP1, and functions as a CRE-dependent trans-activator. Alternatively spliced transcript variants encoding different isoforms have been identified. [provided by RefSeq, Jul 2008]