

## Product datasheet for **RG223839**

### ATP11A (NM\_015205) Human Tagged ORF Clone

#### Product data:

Product Type:	Expression Plasmids
Product Name:	ATP11A (NM_015205) Human Tagged ORF Clone
Tag:	TurboGFP
Symbol:	ATP11A
Synonyms:	ATPIH; ATPIS
Mammalian Cell Selection:	Neomycin
Vector:	pCMV6-AC-GFP (PS100010)
E. coli Selection:	Ampicillin (100 ug/mL)
ORF Nucleotide Sequence:	>RG223839 representing NM_015205 Red=Cloning site Blue=ORF Green=Tags(s)

TTTTGTAATACGACTCACTATAGGGCGGCCGGAATTCGTCGACTGGATCCGGTACCGAGGAGATCTGCC  
GCC**CGATCGCC**

ATGGACTGCAGCCTCGTGCGGACGCTCGTGCACAGATACTGTGCAGGAGAAGAGAATTGGGTGGACAGCA  
GGACCTACTCGTGGGACACAGGGAGCCACCTCCGGGCGCAGAGGCCTACATCCCACAGAGATACCCAGA  
CAACAGGATCGTCTCGTCCAAGTACACATTTTGGAACTTTATACCCAAGAATTTATTTGAACAATTCAGA  
AGAGTAGCCAACTTTTTCTTATCATATTTCTGGTGCAGTTGATTATTGATACACCCACAAGTCCAG  
TGACAAGCGGACTTCCACTCTTCTTTGTCATTACTGTGACGGCTATCAAACAGGGTTATGAAGACTGGCT  
TCGACATAAAGCAGACAATGCCATGAACCAAGTGTCTGTTTCATTTTCATTCAGCACGGCAAGCTCGTTCGG  
AAACAAAGTCGAAAGCTGCGAGTTGGGGACATTGTCATGGTTAAGGAGGACGAGACCTTTCCCTGCGACT  
TGATCTTCTTTCCAGCAACCGGGGAGATGGGACGTGCCACGTCACCACCGCCAGCTTGGATGGAGAATC  
CAGCCATAAAACGCATTACGCGGTCCAGGACACCAAGGCTTCCACACAGAGGAGGATATCGGCGGACTT  
CACGCCACCATCGAGTGTGAGCAGCCCCAGCCGACCTTACAAGTTCGTGGTTCGCATCAACGTTTACA  
GTGACCTGAATGACCCCGTGGTGAAGCCCTTAGGATCGGAAAACCTGTGCTTAGAGGAGCTACACTGAA  
GAACACTGAGAAAATCTTTGGTGTGGCTATTTACACGGGAATGAAAACCAAGATGGCATTAAATATCAA  
TCAAAAATCTCAGAAGCGATCTGCCGTGGAAAAATCGATGAATGCGTTCCTCATTGTGTATCTCTGCATT  
TGATCAGCAAAGCCCTGATAAACACTGTGCTGAAATACATGTGGCAGAGTGAGCCCTTCCGGGATGAGCC  
GTGGTATAATCAGAAAACGGAGTCGAAAAGGCAGAGGAATCTGTTCTCAAGGCATTACGGACTTCTCTG  
GCCTTCATGGTCTCTTTAACTACATCATCCCTGTGTCCATGTACGTACGGTTCGAGATGCAGAAGTTCC  
TCGGCTTACTTCATCACCTGGGACGAAGACATGTTTGACGAGGAGACTGGCGAGGGCCCTCTGGTGAA  
CACGTCGGACCTCAATGAAGAGCTGGGACAGGTGGAGTACATCTTACAGACAAGACCGGCACCCTCACG  
GAAAACAACATGGAGTTCAAGGAGTGTGCATCGAAGGCCATGTCTACGTGCCCCACGTCATCTGCAACG  
GGCAGGTCTCCAGAGTCGTGAGGAATCGACATGATTGACTCGTCCCCACGTCACCGGAGGGAGCG  
CGAGGAGCTGTTTTCCGGGCCCTGTCTCTGCCACACCGTCCAGGTGAAAGACGATGACAGCGTAGAC



[View online »](#)

```

GGCCCCAGGAAATCGCCGACGGGGGAAATCCTGTGTACATCTCATCTCGCCGACGAGGTGGCGC
TGGTCAAGGTGTCCAGAGACTTGGCTTTACCTACCTAAGGCTGAAGGACAATTACATGGAGATATTA
CAGGGAGAACCACATCGAAAGGTTTGAATTGCTGGAAATTTTGTGTTTACTCAGTCAAGGAGAATG
AGTGAATTGTAATACTGCTACAGGAGAAATTTATCTGTTTTGCAAAGGAGCAGATTCTTCGATATTC
CCCGAGTGATAGAAGGCAAAGTTGACCAGATCCGAGCCAGAGTGGAGCGTAACGCAGTGGAGGGCTCCG
AACTTTGTGTGTGCTTATAAAAGGCTGATCCAAGAAGAATATGAAGGCATTTGTAAGCTGCTGCAGG
GCCAAAGTGGCCCTTCAAGATCGAGAGAAAAAGTTAGCAGAAGCCTATGAGCAAATAGAGAAAGATCTTA
CTCTGCTTGGTGCTACAGCTGTTGAGGACCGGCTGCAGGAGAAAGCTGCAGACACCATCGAGGCCCTGCA
GAAGGCCGGGATCAAAGTCTGGGTTCTCACGGGAGACAAGATGGAGACGGCCGCGCCACGTGCTACGCC
TGCAAGCTCTTCCGACAGAACACGCAGCTGCTGGAGCTGACCACCAAGAGGATCGAGGAGCAGAGCTGC
ACGACGCTCTGTTGAGCTGAGCAAGACGGTCTGCGCCACAGCGGGAGCCTGACCAGAGACAACCTGTC
CGGACTTTCAGCAGATATGCAGGACTACGGTTAATTATCGACGGAGCTGCACTGTCTCTGATAATGAAG
CCTCGAGAAGACGGGAGTCCGGCAACTACAGGGAGCTTCTGAAATCTGCCGGAGCTGCAGCGCGG
TGCTCTGCTGCCCATGGCGCCCTGCAGAAGGCTCAGATTGTTAAATTAATCAAATTTTCAAAGAGCA
CCCAATCACGTTAGCAATTGGCGATGGTCAAATGATGTCAGCATGATTCTGGAAGCGCAGTGGGCATA
GGTGTCATCGGAAGGAAGGCCCGCAGGCTGCCAGGAACAGCAGCTATGCAATCCCAAAGTTAAGCATT
TGAAGAAGATGCTGCTTGTTCACGGGCATTTTTATTACATTAGGATCTCTGAGCTCGTGCAGTACTTCT
CTATAAGAAGCTGCTTCTCATCTTCCCTCAGTTTTTATACCAGTCTTCTGTGGTTTTTACAACAGACT
TTGTACGACACCGGATCTGACCCCTACAACATCAGCTTACCTCCCTCCCATCCTCCTGTACAGCC
TCATGGAGCAGCATGTTGGCATTGACGTGCTCAAGAGAGACCCGACCCTGTACAGGGACGTGCCAAGAA
TGCCCTGCTGCGTGGCGGTGTTACTACTGGACGCTCCTGGGACTGTTTGACGCACTGGTGTCTTC
TTTGGTGTATTTCTGTGTTTAAAATAACAACGTGACAAGCAACGGGCAGATATTTGAAACTGGACGT
TTGGAACGCTGGTATTCACCGTATGGTGTTCACAGTTACACTAAAGCTTGCATTGGACACACACTGTC
GACTTGGATCAACCATTTTGTCTACTGGGGTCCGCTGCTGTTCTACGTTGTCTTTTCGCTTCTCTGGGA
GGAGTGATCTGGCCGTTCTCAACTACCAGAGGATGTAACGTTCTCCAGATGCTGTCCAGCGGGC
CCGCTGGCTGGCCATCGTGTGCTGGTACCATCAGCCTCCTTCCGACGCTCCTCAAGAAAGTCTGTG
CCGGCAGCTGTGGCAACAGCAACAGAGAGAGTCCAGACTAAGAGCCAGTGCCTTCTGTGAGCAGTCA
ACCATCTTATGCTTCTCAGACTTCCAGCAGCCTGAGTTTC

```

ACGCGTACGCGGCCGCTCGAG - GFP Tag - GTTTAA

**Protein Sequence:**

>RG223839 representing NM\_015205  
 Red=Cloning site Green=Tags(s)

```

MDCSLVRTL VHYRCAGEENWVDSRTIYVGHREPPPGAEAYIPQRYPDNRIVSSKYTFWNFIPKNLFEQFR
RVANFYFLIIFLVQLIIDTPTSPVTSGLPLFFVITVTAIKQGYEDWLRHKADNAMNQCVPVHFIQHGKLV
KQSRKLRVGDIVMVKEDTFPCDLIFLSSNRGDGTCHVTTASLDGESSHKTHYAVQDTKGFHTEEDIGGL
HATIECEQPQPDLYKFVGRINVYSDLNTPVVRPLGSENLRLRGATLKNTEKIFGVAIYTMETKMALNYQ
SKSQKRS AVEKSMNAFLIYVLCILISKALINTVLKYMWQSEPFREPWYNQKTESERQRNFLKAF TDFL
AFMVL FNYIIPVSMYVTVEMQKFLGYSYFITWDEDMFDEETGEGPLVNTSDLNEELGQVEYIFTDKGTLT
ENNMEFKECCIEGHVYVPHVICNGQVLPESSGIDMIDSSPSVNGREREELFFRALCLCHTVQVKDDSDVD
GPRKSPDGGKSCVYISSPDEVALVEGVRQLGFTYLRKLDNYMELNRENHIERFELLEILSFDVSRMRM
SVIVKSATGEIYLFCKGADSSIFPRVIEGKVDQIRARVERNAVEGLRTLCAVYKRLIQEEYEGICKLLQA
AKVALQDREKKLAEAYEQIEKDLTLLGATAVEDRLQEKAADTIEALQKAGIKVWVLTDGKMETAAATCYA
CKLFRNTQLLELTTKRIEEQSLHDVLFELSKTVLRHSGSLTRDNL SGLSADMQDYGLIIDGAALSLIMK
PREDGSSGNRELFLIEICRSCSAVLCRMAPLQKAQIVKLIKFSKEHPITLAIGDGANDVSMILEAHVGI
GVI GKEGRQAARNSDYAIPKFKHLKMLLVHGHFYIRISELVQYFFYKNVCFIFPQFLYQFFCGFSQQT
LYDTAYL TLYNISFTSLPILLYSLMEQHVIGIDVLKRDPTLYRDVAKNALLRWRVFIYWTLLGLFDALVFF
FGAYFVFENTTTSNGQIFGNWTFGTLVFTVMVFTVTLKLALDTHYWTWINHFVIWGSLLFYVVSLLWG
GVIWPFLNYQRMYYVFIQMLSSGPAWLAIVLLVTISLLPDVLKKVLCRQLWPTATERVQTKSQLSVEQS
TIFMLSQTSSLSF

```

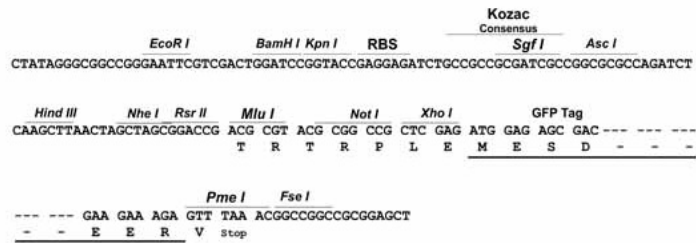
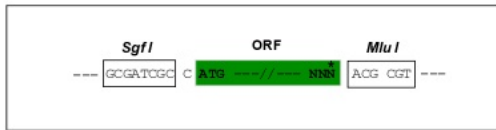
TRTRPLE - GFP Tag - V

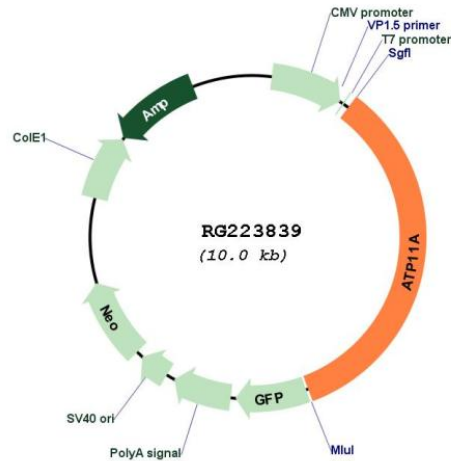
Restriction Sites:

SgfI-MluI

Cloning Scheme:

Cloning sites used for ORF Shuttling:



**Plasmid Map:**


**ACCN:** NM\_015205

**ORF Size:** 3402 bp

**OTI Disclaimer:** The molecular sequence of this clone aligns with the gene accession number as a point of reference only. However, individual transcript sequences of the same gene can differ through naturally occurring variations (e.g. polymorphisms), each with its own valid existence. This clone is substantially in agreement with the reference, but a complete review of all prevailing variants is recommended prior to use. [More info](#)

**OTI Annotation:** This clone was engineered to express the complete ORF with an expression tag. Expression varies depending on the nature of the gene.

**Components:** The ORF clone is ion-exchange column purified and shipped in a 2D barcoded Matrix tube containing 10ug of transfection-ready, dried plasmid DNA (reconstitute with 100 ul of water).

**Reconstitution Method:**

1. Centrifuge at 5,000xg for 5min.
2. Carefully open the tube and add 100ul of sterile water to dissolve the DNA.
3. Close the tube and incubate for 10 minutes at room temperature.
4. Briefly vortex the tube and then do a quick spin (less than 5000xg) to concentrate the liquid at the bottom.
5. Store the suspended plasmid at -20°C. The DNA is stable for at least one year from date of shipping when stored at -20°C.

**RefSeq:** [NM\\_015205.2](#), [NP\\_056020.2](#)

**RefSeq Size:** 8795 bp

**RefSeq ORF:** 3405 bp

**Locus ID:** 23250

**UniProt ID:** [P98196](#)

**Cytogenetics:** 13q34

**Protein Families:** Transmembrane

**Gene Summary:** The protein encoded by this gene is an integral membrane ATPase. The encoded protein is probably phosphorylated in its intermediate state and likely drives the transport of ions such as calcium across membranes. Two transcript variants encoding different isoforms have been found for this gene. [provided by RefSeq, Jul 2008]