

Product datasheet for **RG223806**

ZNF419A (ZNF419) (NM_001098492) Human Tagged ORF Clone

Product data:

Product Type:	Expression Plasmids
Product Name:	ZNF419A (ZNF419) (NM_001098492) Human Tagged ORF Clone
Tag:	TurboGFP
Symbol:	ZNF419
Synonyms:	ZAPHIR; ZNF419A
Mammalian Cell Selection:	Neomycin
Vector:	pCMV6-AC-GFP (PS100010)
E. coli Selection:	Ampicillin (100 ug/mL)



[View online »](#)

ORF Nucleotide Sequence:

>RG223806 ORF sequence, **codon optimized**.
Due to the complexity of NM_001098492, the ORF clone is codon optimized for mammalian Expression.
The nucleotide sequence differs from the reference sequence, yet the amino acid sequence remains identical.

Red=Cloning site Blue=ORF Green=Tags(s)

TTTTGTAATACGACTCACTATAGGGCGCCGGGAATTCGTCTGACTGGATCCGGTACCGAGGAGATCTGCCGCC**GCGATCGCC**

ATGGCCGCCGAGCGCTTCGCGACCCAGCTCAGCAAGGGTATGTGACGTTTCGAGGACGTAGCTGTTTATTTCAGCCAGGAAGAATGGAGGCTGCTGGACGACGCACAGAGGCTTCTGTATCGGAACGTGATGCTGGAAAACTTCACCTGCTGGCCTCTCTGGGGCTGGCGAGTAGTAAGACCCATGAAATCACCCAGCTGGAGTCTGGAGAGCCCTTTATGCCCGCATGGGAGGTTGTTACCTCTGCCATTCGAGAGGCTGCTGGCACGGTGCAGAAGCGGAAGAGGCACCTGAGCAGATCGTTCCGTTGGGCTGCTCTCCAGTAATATCCAGCAGCATCAGAAACAGCACTGTGGAGAAAAAGCCCTGAAGCGCAAGAAGGCCGGGTGCCTGTACTTCGGAGCTGTAAGGTGCATCTGAGCGAGAAAATCCCTGCAGTCTAGGGAGGTGGGCAAAGCCCTTCTATCTCCAGCGCGTGTGAGCACCAGTTACGCATACCGGAGAAAAATCTCACAGAAGCTCCAATCTAGGGAAGCCTTCCACGCGGGCAAAGGCATTACAAATGCTCAGAATGTGGGAAGGCCCTTGGGCAGAAAATCTCCTTGTCAACATCAAGACTGCACGCTGGCAAGAAGACCTACGAGTGTCCGAATGCGGGAGCTGTTCCGCGACATGTCCAACCTGTTTCATCCATCAAATTTGCACACCCGAGAGCGGCCATATGGATGTAGCAACTGCGGCAAGTCTTTTAGCCGGAACGCTCACCTGATCGAGCACCAGAGGGTGCATACGGGGGAGAAGCCTTTACATGTTCCGAGTGGGAAAAGCATTTTCGACACAATTCACACTCTGGTGCAGCACCATAAGATCCATACGGGAGTCAGACCCTATGAGTGCTCAGAGTGCAGCAAAATGTTTTCTTTTAAACAGCTCTCTCATGAAACACCAGCGCATTTCATACCGGCGAGCGCCATACAAGTGTAGCGAATGTGGAAAGTTTCTACTCCCACAAAAGCAACCTCATAAAAACATTGGCGGGTGCATACAGGGAAAGGCCGTACAAGTGCAGCGACTGCGGTAAATCTTCACTCAGTGTAGCAGTCTCATGCAGCATCAGAAGGTGCATACTGGTGAAGAACCTTCAAGTGAATGAGTGCAGTGTAGTTCTTTCCGAAAACCTCACTCTGGTACGACACCAAGAGTCCATACGGGTGCAAAGCCTTATGAGTGCCGGGAATGTGGCAAATCTTTTACAAAAGTTTACCCTCATGCAGCATAGGAAGTCCACATCGGAGAGAAGCCGTTCAAGTGCAACGAGTGCAGTGTTCAGGGAGAACTCTAGCCTGGTTAAACACCAGAGGTTCCACACAGGTGCCAAGCCATGAATGTCGGGAGTGTGGGAAGTTCTTCGCCATAACAGCAGTTTGTTTAAACACAGACGGATCCACACTGGCGAGATGCAG

ACGCGTACGCGGCCGCTCGAG – GFP Tag – GTTTAA

Protein Sequence:

>RG223806 representing NM_001098492
 Red=Cloning site Green=Tags(s)

MAAAALRDPAAQQGYVTFEDVAVYFSQEEWRLDDAQRLLYRNVMLNFTLLASLGLASSKTHEITQLESWEEFMPAWEVVTSAIPRCWHGAEAEAEPEQIASVGLLSSNIQQHQKQHCGEKPLKRQGRVPVLRSCVHLSEKSLQSREVGKALLISSGVLKHQVHTHTGEKSHRSSKSREAFHAGKRHYKCSECGKAFGQKYLVLVQHQLRHAGKKTIECSECGKLFDRMSNLFIHQIVHTGERPYGCSNCGKSF SRNAHLIEHQRVHTGKPFCTSECGKAFRHNSTLVQHHKIHTGVRPYECSECGKLF SFNSSLMKHQRIHTGERPYKCEGKFFYSHKSNLIKHW RVHTGERPYKSDCGKFF TQCSSLMQHQK VHTGEKPFKNECGRFFRENSTLVRHQRVHTGAKPYECRECGKFFSQSSTLMQHRKVHIGKPFKNECGRFFRENSSLVKHQRVHTGAKPYECRECGKFFRHNSSLFKHRRIHTGEMQ

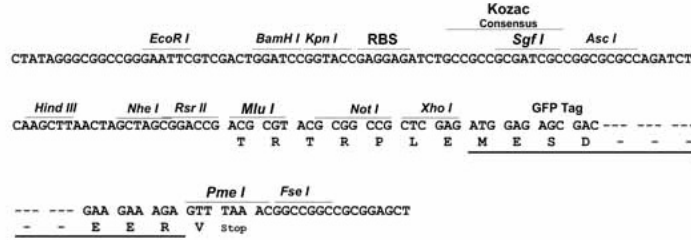
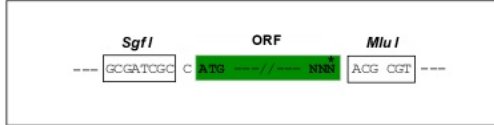
TRTRPLE – GFP Tag – V

Restriction Sites:

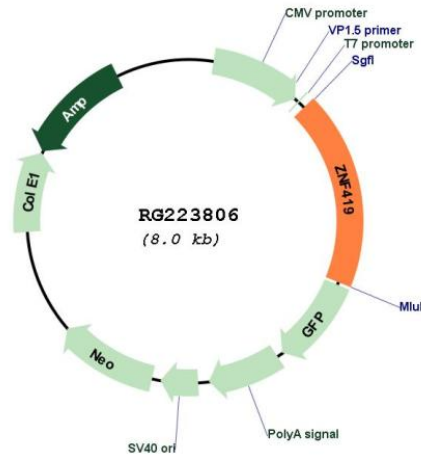
SgfI-MluI

Cloning Scheme:

Cloning sites used for ORF Shutting:



Plasmid Map:



ACCN: NM_001098492

ORF Size: 1494 bp

OTI Disclaimer:	The molecular sequence of this clone aligns with the gene accession number as a point of reference only. However, individual transcript sequences of the same gene can differ through naturally occurring variations (e.g. polymorphisms), each with its own valid existence. This clone is substantially in agreement with the reference, but a complete review of all prevailing variants is recommended prior to use. More info
OTI Annotation:	This clone was engineered to express the complete ORF with an expression tag. Expression varies depending on the nature of the gene.
Components:	The ORF clone is ion-exchange column purified and shipped in a 2D barcoded Matrix tube containing 10ug of transfection-ready, dried plasmid DNA (reconstitute with 100 ul of water).
Reconstitution Method:	<ol style="list-style-type: none">1. Centrifuge at 5,000xg for 5min.2. Carefully open the tube and add 100ul of sterile water to dissolve the DNA.3. Close the tube and incubate for 10 minutes at room temperature.4. Briefly vortex the tube and then do a quick spin (less than 5000xg) to concentrate the liquid at the bottom.5. Store the suspended plasmid at -20°C. The DNA is stable for at least one year from date of shipping when stored at -20°C.
RefSeq:	NM_001098492.1 , NP_001091962.1
RefSeq Size:	2345 bp
RefSeq ORF:	1497 bp
Locus ID:	79744
UniProt ID:	Q96HQ0
Cytogenetics:	19q13.43
Protein Families:	Transcription Factors
Gene Summary:	May be involved in transcriptional regulation.[UniProtKB/Swiss-Prot Function]