

## Product datasheet for **RG223796**

### **TRIM32 (NM\_001099679) Human Tagged ORF Clone**

#### **Product data:**

Product Type:	Expression Plasmids
Product Name:	TRIM32 (NM_001099679) Human Tagged ORF Clone
Tag:	TurboGFP
Symbol:	TRIM32
Synonyms:	BBS11; HT2A; LGMD2H; LGMDR8; TATIP
Mammalian Cell Selection:	Neomycin
Vector:	pCMV6-AC-GFP (PS100010)
E. coli Selection:	Ampicillin (100 ug/mL)



[View online »](#)

**ORF Nucleotide Sequence:**

>RG223796 representing NM\_001099679  
 Red=Cloning site Blue=ORF Green=Tags(s)

TTTTGTAATACGACTCACTATAGGGCGGCCGGAATTCGTCGACTGGATCCGGTACCGAGGAGATCTGCC  
 GCC**GCGATCGCC**

ATGGCTGCAGCAGCAGCTTCTCACCTGAACCTGGATGCCCTCCGGAAGTCTAGAAATGCCCATCTGCA  
 TGGAGTCCCTTACAGAAGAGCAGCTGCGTCCCAAGCTTCTGCACTGTGGCCATACCATCTGCCGCCAGTG  
 CCTGGAGAAGCTATTGGCCAGTAGCATCAATGGTGTCCGCTGTCCCTTTTGCAGCAAGATTACCCGCATA  
 ACCAGCTTGACCCAGCTGACAGACAATCTGACAGTGCTAAAGATCATTGATACAGCTGGGCTCAGCGAGG  
 CTGTGGGGCTGCTCATGTGTCCGCTCTGTGGGCGGCTGTGCCCGGCAATCTGCCGGAGCTGTGGTTT  
 GGTGTTATGTGAGCCCTGCCGGGAGGCAGACCATCAGCCTCTGGCCACTGTACACTCCCTGTCAAAGAA  
 GCAGCTGAGGAGCGGCTCGGGACTTTGGAGAGAAGTAACTCGTCTGCGGGAACCTATGGGGGAGCTGC  
 AGCGGCGGAAGGCAGCCTTGAAGGTGTCTCAAGGACCTTCAGGCAAGGTATAAAGCAGTTCTCCAGGA  
 GTATGGGCATGAGGAGCGCAGGGTCCAGGATGAGCTGGCTCGCTCTCGGAAGTTCTTACAGGCTCTTTG  
 GCTGAAGTTGAGAAGTCCAATAGTCAAGTGGTAGAGGAGCAGAGTTACCTGCTTAAACATTGCAGAGGTGC  
 AGGCTGTGTCTCGCTGTGACTACTTCTGGCCAAGATCAAGCAGGCAGATGTAGCACTACTGGAGGAGAC  
 AGCTGATGAGGAGGAGCCAGAGCTCACTGCCAGCTTGCCTCGGGAGCTCACCCCTGCAAGATGTGGAGCTC  
 CTTAAGGTAGGTCATGTTGGCCCCCTCAAATTGGACAAGCTGTTAAGAAGCCCCGGACAGTTAACGTGG  
 AAGATTCTGGGCCATGGAGGCCACAGCGTCTGCTGCCTACCTCTGTTACTTTTAGAGAGATGGACAT  
 GAGCCCGGAGGAAGTGGTTGCCAGCCCTAGGGCCTCACCTGCTAAACAGCGGGTCTGAGGCAGCCTCC  
 AATATCCAGCAGTGCCTCTTCTCAAGAAGATGGGGCCAAAGGCAGCACTCCAGGAATGTTCAATCTTC  
 CAGTCAGTCTCTACGTGACCAGTCAAGGTGAAGTACTAGTCTGACCGTGGTAACTATCGTATACAAGT  
 CTTTACCCGCAAAGGCTTTTTGAAGGAAATCCGCCGAGCCCAAGTGGCATTGATAGCTTTGTGCTAAGC  
 TTCTTGGGGCAGATCTACCCAACCTCACTCTCTCAGTGGCAATGAACTGCCAGGGGCTGATTGGTG  
 TGACTGACAGCTATGATAACTCCCTCAAGGTATATACCTTGGATGGCCACTGCGTGGCCTGTACAGGAG  
 CCAGCTGAGCAAACCATGGGGTATCACAGCCTTGCATCTGGCCAGTTTGTAGTAACCGATGTGGAAGGT  
 GGAAAGCTTTGGTGTTCACAGTTGATCGAGGATCAGGGGTGGTCAAATACAGCTGCCTATGTAGTGCTG  
 TGCGGCCCAAATTTGTCACCTGTGATGCTGAGGGCACCGTCTACTTACCCAGGGCTTAGGCCTCAATCT  
 GGAGAATCGGCAGAAATGAGCACCACTGGAGGGTGGCTTTCCATTGGCTCTGTAGGCCCTGATGGGCAG  
 CTGGGTCGCCAGATTAGCCACTTCTTCTCGGAGAATGAGGATTTCCGCTGCATTGCTGGCATGTGTGTGG  
 ATGCTCGTGGTATCTATCGTGGCTGACAGTAGTCGAAAGGAAATCTCCATTTTCTAAGGGTGGGGG  
 CTATAGTGTCTTATTGAGAGGGACTTACCTGTCCGGTGGGCATAGCCCTAACTCCTAAGGGGCAGCTG  
 CTGGTCTTGGACTGTTGGGATCATTGCATCAAGATCTACAGCTACCATCTGAGAAGATATCCACCCCA

**ACGCGT**ACGCGGGCCGCTCGAG – GFP Tag – GTTTAA

**Protein Sequence:**

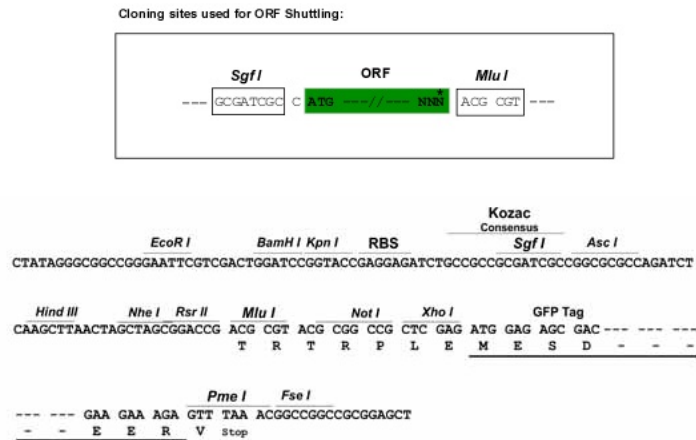
>RG223796 representing NM\_001099679  
 Red=Cloning site Green=Tags(s)

MAAAAASHLNLDALREVLECPICMESFTEEQLRPKLLHCGHTICRQCLEKLLASSINGVRCPFCSKITRI  
 TSLTQLTDNLTVLKIIDTAGLSEAVGLLMCRSCGRRLPRQFCRSCGLVLCPCREADHQPPGHCTLPVKE  
 AAERRRDFGEKLTRELMEGLQRRKAALQVSKDLQARYKAVLQYEGHEERRVQDELARSRKFFTGSL  
 AEVEKSNQVVEEQSYLLNIAEVQAVSRCDYFLAKIKQADVALLEETADEEPELTASLPRELTLDQVEL  
 LKVGHVGLPLQIGQAVKPRPTVNVEDSWAMEATASAASVTFREMDMSPEEVVASPRSPAKQRPPEAAS  
 NIQQCLFLKMGAKGSTPGMFLPVSLYVTSQGEVYLVADRGNRYIQVFTRKGLKEIRRSPPSGIDSFVLS  
 FLGADLPNLTPLSVAMNCQGLIGVTDSYDNLKYYTLDGHCVACHRSQLSKPWGITALPSQGFVVTDVEG  
 GKLCWFTVDRSGVVKYSCLCSAVRPFVTCDAEGTVYFTQGLNLENRQNEHHLEGGFSIGSVGPDGQ  
 LGRQISHFFSENEFRCIAGMCDVARGDLIVADSSRKEILHFPKGGGYSVLIREGLTCPVGIATLTPKGQL  
 LVLDCWDHCIKIYSYHLRRYSTP

**TRTRPLE** – GFP Tag – V

Restriction Sites: SgfI-MluI

Cloning Scheme:



ACCN: NM\_001099679

ORF Size: 1959 bp

OTI Disclaimer: The molecular sequence of this clone aligns with the gene accession number as a point of reference only. However, individual transcript sequences of the same gene can differ through naturally occurring variations (e.g. polymorphisms), each with its own valid existence. This clone is substantially in agreement with the reference, but a complete review of all prevailing variants is recommended prior to use. [More info](#)

OTI Annotation: This clone was engineered to express the complete ORF with an expression tag. Expression varies depending on the nature of the gene.

Components: The ORF clone is ion-exchange column purified and shipped in a 2D barcoded Matrix tube containing 10ug of transfection-ready, dried plasmid DNA (reconstitute with 100 ul of water).

Reconstitution Method:

1. Centrifuge at 5,000xg for 5min.
2. Carefully open the tube and add 100ul of sterile water to dissolve the DNA.
3. Close the tube and incubate for 10 minutes at room temperature.
4. Briefly vortex the tube and then do a quick spin (less than 5000xg) to concentrate the liquid at the bottom.
5. Store the suspended plasmid at -20°C. The DNA is stable for at least one year from date of shipping when stored at -20°C.

RefSeq: [NM\\_001099679.2](#)

RefSeq Size: 3731 bp

RefSeq ORF: 1962 bp

Locus ID: 22954

UniProt ID: [Q13049](#)

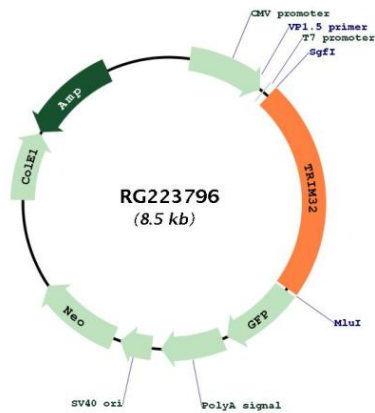
**Cytogenetics:** 9q33.1

**Protein Families:** Transcription Factors

**Protein Pathways:** Ubiquitin mediated proteolysis

**Gene Summary:** The protein encoded by this gene is a member of the tripartite motif (TRIM) family. The TRIM motif includes three zinc-binding domains, a RING, a B-box type 1 and a B-box type 2, and a coiled-coil region. The protein localizes to cytoplasmic bodies. The protein has also been localized to the nucleus, where it interacts with the activation domain of the HIV-1 Tat protein. The Tat protein activates transcription of HIV-1 genes. [provided by RefSeq, Jul 2008]

**Product images:**



Circular map for RG223796