

Product datasheet for **RG223792**

TAS2R43 (NM_176884) Human Tagged ORF Clone

Product data:

Product Type:	Expression Plasmids
Product Name:	TAS2R43 (NM_176884) Human Tagged ORF Clone
Tag:	TurboGFP
Symbol:	TAS2R43
Synonyms:	T2R43; T2R52
Mammalian Cell Selection:	Neomycin
Vector:	pCMV6-AC-GFP (PS100010)
E. coli Selection:	Ampicillin (100 ug/mL)
ORF Nucleotide Sequence:	>RG223792 representing NM_176884 Red=Cloning site Blue=ORF Green=Tags(s)

TTTTGTAATACGACTCACTATAGGGCGGCCGGAATTCGTCGACTGGATCCGGTACCGAGGAGATCTGCC
GCC**CGATCGCC**

ATGATAACTTTTCTACCCATCATTTTTCCAGTCTGGTAGTGGTTACATTTGTTATTGGAAATTTTGCTA
ATGGCTTCATAGCACTGGTAAATTCATTGAGTCGTTCAAGAGACAAAAGATCTCCTTTGCTGACCAAT
TCTCACTGCTCTGGCGGTCTCCAGAGTTGGTTGCTCTGGGTATTATTATAAACTGGTATTCAACTGTG
TTGAATCCAGCTTTTAATAGTGTAGAAGTAAGAAGTACTGCTTATAATATCTGGGCAGTGATCAACCATT
TCAGCAACTGGCTTGCTACTACCCTCAGCATATTTTATTTGCTCAAGATTGCCAATTTCTCCAATTTAT
TTTTCTTCACTTAAAGAGGAGAGTTAAGAGTGTCATTCTGGTGATGTTGTTGGGGCCTTTGCTATTTTTG
GCTTGTCATCTTTTTGTGATAAACATGAATGAGATTGTGCGGACAAAAGAATTTGAAGGAAACATGACTT
GGAAGATCAAATGAAGAGTGCAATGTACTTTTCAAATATGACTGTAACCATGGTAGCAAACCTAGTACC
CTTCACTCTGACCCTACTATCTTTATGCTGTTAATCTGTTCTTTGTGTAACATCTCAAGAAGATGCAG
CTCCGTGGTAAAGGATCTCAAGATCCCAGCACGAAGGTCCACATAAAAGCTTTGCAAACCTGTGATCTCT
TCCTCTTGTTATGTGCCATTTACTTTCTGTCCATAATGATATCAGTTTGGAGTTTGGAAAGTCTGGAAAA
CAAACCTGTCTTCATGTTCTGCAAAGCTATTAGATTCACTATCCTTCAATCCACCCATTCATCCTGATT
TGGGGAACAAGAAGCTAAAGCAGACTTTTCTTTCAGTTTTTGGCAAATGAGGTACTGGGTGAAAGGAG
AGAAGACTTCATCTCCA

ACGCGTACGCGGCCGCTCGAG - GFP Tag - GTTTAA



[View online »](#)

Protein Sequence: >RG223792 representing NM_176884
 Red=Cloning site Green=Tags(s)

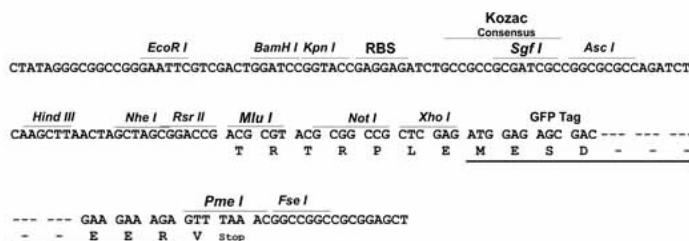
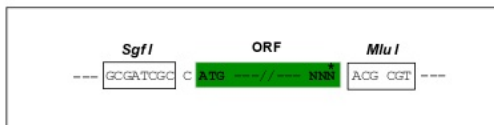
MITFLPIIFSSLVVVTFVIGNFANGFIALVNSIESFKRQKISFADQILTALAVSRVGLLVWLLLLNWYSTV
 LNPAFNSVEVRTTAYNIWAVINHFNSWLATTLISIFYLLKIANFSNFIFLHLKRRVKSVILVMLLGPLLFL
 ACHLFVINMNEIVRTKEFEGNMTWKIKLSAMYFSNMVTMVANLVPFTLTLLSFMLLICSLCKHLKMKMQ
 LRGKGSQDPSTKVHIKALQTVISFLLLCAIYFLSIMISVWSFGSLENKPVFMFCKAIRFSYPSIHPFILI
 WGNKCLKQTFLSVFWQMRVWVKGEKTSSP

TRTRPLE - GFP Tag - V

Restriction Sites: SgfI-MluI

Cloning Scheme:

Cloning sites used for ORF Shuttling:



ACCN: NM_176884

ORF Size: 927 bp

OTI Disclaimer: The molecular sequence of this clone aligns with the gene accession number as a point of reference only. However, individual transcript sequences of the same gene can differ through naturally occurring variations (e.g. polymorphisms), each with its own valid existence. This clone is substantially in agreement with the reference, but a complete review of all prevailing variants is recommended prior to use. [More info](#)

OTI Annotation: This clone was engineered to express the complete ORF with an expression tag. Expression varies depending on the nature of the gene.

Components: The ORF clone is ion-exchange column purified and shipped in a 2D barcoded Matrix tube containing 10ug of transfection-ready, dried plasmid DNA (reconstitute with 100 ul of water).

Reconstitution Method:

1. Centrifuge at 5,000xg for 5min.
2. Carefully open the tube and add 100ul of sterile water to dissolve the DNA.
3. Close the tube and incubate for 10 minutes at room temperature.
4. Briefly vortex the tube and then do a quick spin (less than 5000xg) to concentrate the liquid at the bottom.
5. Store the suspended plasmid at -20°C. The DNA is stable for at least one year from date of shipping when stored at -20°C.

RefSeq: [NM_176884.1](#), [NP_795365.1](#)

RefSeq Size: 930 bp

RefSeq ORF: 930 bp

Locus ID: 259289

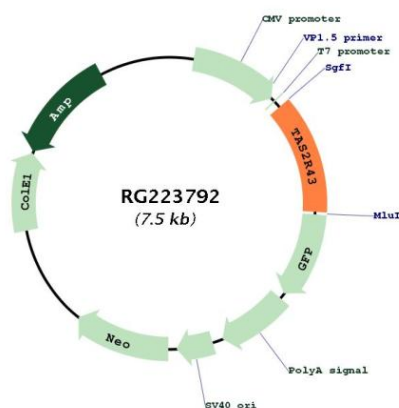
UniProt ID: [P59537](#)

Cytogenetics: 12p13.2

Protein Pathways: Taste transduction

Gene Summary: TAS2R43 belongs to the large TAS2R receptor family. TAS2Rs are expressed on the surface of taste receptor cells and mediate the perception of bitterness through a G protein-coupled second messenger pathway (Conte et al., 2002 [PubMed 12584440]). For further information on TAS2Rs, see MIM 604791.[supplied by OMIM, Mar 2009]

Product images:



Circular map for RG223792