

Product datasheet for **RG223775**

ZNF226 (NM_001032373) Human Tagged ORF Clone

Product data:

Product Type:	Expression Plasmids
Product Name:	ZNF226 (NM_001032373) Human Tagged ORF Clone
Tag:	TurboGFP
Symbol:	ZNF226
Mammalian Cell Selection:	Neomycin
Vector:	pCMV6-AC-GFP (PS100010)
E. coli Selection:	Ampicillin (100 ug/mL)



[View online »](#)

ORF Nucleotide Sequence:

>RG223775 representing NM_001032373
 Red=Cloning site Blue=ORF Green=Tags(s)

TTTTGTAATACGACTCACTATAGGGCGGCCGGGAATTCGTCGACTGGATCCGGTACCGAGGAGATCTGCC
 GCC**CGGATCGCC**

ATGAATATGTTCAAGGAAGCAGTGACCTTCAAGGACGTGGCTGTGGCCTTCACGGAGGAGGAATTGGGGC
 TGCTGGGCCCTGCCAGAGGAAGCTGTACCGAGATGTGATGGTGGAGAACCTTAGGAACCTGCTGTCACT
 GGGGCATCCACCTTCAAAACAAGATGTATCACCTATAGAAAGAAATGAGCAGCTTTGGATAATGACGACA
 GCAACCCGAAGACAGGGAATTTAGGAGAGAAAAATCAAAGTAAGTTAATTAAGTGTCAAGACAGAGAAT
 CAGAAGAAGAGCTTTCTTGTGGCAAACTGGCAACAAATGCAAAATGACTTAACCGAGTGTCAAGACTC
 CATGATCAATAATTCTCAGTGTCAAAACAAGGTGATTTCCCTTACCAGGTAGGGACAGAAGTGTCTATT
 CAAATTTCTGAAGATGAGAACTATATAGTAAATAAAGCAGATGGTCCCAATAACTGGGAATCCAGAGT
 TTCTATCTTGAGAACCCAGGATTTCTGGAGGAAAACATTCCTGACTGAGTCACAGAGATTGAACAGAGA
 TCAGCAAAATTTCCATAAAAAATAAATTATGTCAATGTAAGAAGGGTGTGATCCCATCGGTTGGATTTC
 CATCATGATGGTCATAGAGTACACAAAAGTGAAAAATCTTATAGACCCAATGATTATGAAAAAGACAACA
 TGAAGATTTTGACATTTGATCACAAATAGCATGATTCACACAGGACAGAAAATCGTACCAGTGTAAAGAGT
 TAAAAACCCCTTCAGTGTCTCTCCAGCTTTGATCTTTCATCAGCAGTTACAATCAGGAGAGAAGTCTCTT
 ACATGTGTTGAGCGTGGAAAAGGCTTCTGTTACAGCCAGTTCCTCTGTTTCATCAGAAAAGTACATGTGG
 GAGAAAAACTTAAGTGTGATGAGTGTGGTAAGGAATTCAGTCAGGGCGCTCATCTACAGACCCATCAGAA
 AGTCCACGTGATAGAGAAACCATACAAATGTAAGCAATGTGGGAAAGGTTTCAGTCGTAGATCAGCACTT
 AATGTTCAATGCAAGGTCCACACGGCAGAGAAAACCTTATAATTTGAGGAGTGTGGGAGGGCCTTCAGTC
 AGGCCCTCATCTTCAGGACCATCAGAGACTCCACACTGGGGAGAAGCCATTCAAATGTGATGCATGTGG
 TAAGAGCTTCAGTCGGAATTCACATCTTCAATCCCATCAAAGAGTTCATACAGGAGAGAAAACCATACAAA
 TGTGAGGAGTGTGGTAAGGGCTTCATTTGTAGCTCAAATCTTTACATTCATCAGAGAGTCCACACAGGAG
 AAAAAACCTATAAATGTGAGGAATGTGGTAAAGGCTTTAGTCGGCCTTCAAGTCTTCAGGCCCATCAGGG
 AGTTCACACTGGAGAGAAGTACATACATGTACTGTATGTGGGAAAGGCTTTACTCTGAGTTCAAATCTT
 CAAGCCCATCAGAGAGTCCACACTGGAGAGAAGCCATACAAATGCAATGAGTGTGGGAGAGCTTCAGGA
 GGAATTCCTATTCAAGTTCATCTAGTGGTCCACACAGGAGAGAAAACCTATAAATGTGAGATATGTGG
 GAAGGGCTTCAGTCAAAGTTCGATCTTCAAATCCATCAGAAGGCCACAGTATAGAGAAAACCTTTAAG
 TGTGAGGAGTGTGGCAGGGTTTCAATCAGAGCTCACGACTTCAGATTCACCAGCTGATCCATACGGGTG
 AGAAACCATACAAATGTGAAGAGTGTGGCAAGGGATTTAGTCGTAGAGCAGATCTTAAAAATTCAGTGTAG
 GATCCACACAGGAGAGAAAACCATATAAATGTGAGGAGTGTGGGAAAGGCTTCAGGCAGGCCCTCAAATCTT
 TTGGCCCATCAGAGAGTCCACAGTGGAGAAAAACCATCAAATGTGAAGAATGTGGGAGAGTTCGGTTC
 GGAGTGCACATCTTCAAGCCATCAAAAAGTCCACACTGGAGATAAGCCATACAAATGTGATGAGTGTGG
 GAAGGGCTTCAAGTGGAGCTTGAACCTTGACATGCATCAGAGGGTGCACACAGGAGAAAAACCATATAAA
 TGTGGGGAGTGTGGTAAGTACTTCAGTCAGGCCCAAGTCTTCAACTTCATCAGAGTGTCCACACAGGAG
 AGAAACCATACAAATGTGATGTGTGTGGTAAAGTCTTTCAGTCGGTCTTCACAACTACAGTCTCATCAGCC
 AGTTCACACTGGGAGAAAACCTATAAATGTGAGATATGTGGTAAGAGCTTCAGTTGGCGATCAAATCTT
 ACAGTTCATCACAGAATCCATGTTGGTGATAAATCCTATAAAAAGTAATAGGGGTGTAAGAACATCAGAG
 AATCCACACAGGAAAAAATCTATAAAA

ACGCGTACGCGGCCGCTCGAG – GFP Tag – GTTTAA

Protein Sequence: >RG223775 representing NM_001032373
 Red=Cloning site Green=Tags(s)

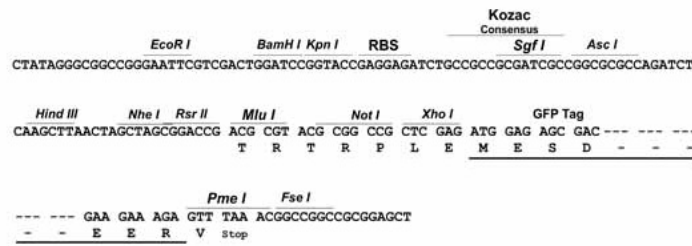
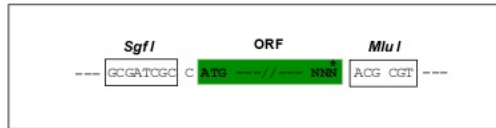
MNMFKEAVTFKDVAVAFTEEELGLLGAQRKLYRDMVENFRNLLSVGHPPFKQDVSPIERNEQLWIMTT
 ATRRQGNLGEKNQSKLITVQDRESEEELSCWQIWQIANDLTRCQDSMINNSQCHKQGDFFPYQVGTLSI
 QISEDENYIVNKADGPNNTGNPEFPILRTQDSWRKTFLTESQRLNRDQQISIKNKLQCKKGVDP
 IGWISHHDGHRVHKSEKSYRPNDEKDNMKILTFDHNSMIHTGQKSYQCNECKKPFSDLSSF
 DLHQQLQSSEKSLTCVERGKFCYSPVLPVHQKVHVGEKLCDECGKEFSQGAHLQTHQKVHVIEKPYK
 CKQCGKFSRRSALNVHCKVHTAEKPYNCEECGRAFSQASHLQDHQRLHTGEKPFKCDACGKSF
 SRNSHLQSHQVRVHTGEKPYKCEECGKGFICSSNLYIHQVRVHTGEKPYKCEECGKGF
 SRPSSLQAHQGVHTGEKSYICTVCGKGFLLSSNLQAHQVRVHTGEKPYKCEECGKSFRRNSH
 YQVHLVVHTGEKPYKCEICGKGFSSSYLQIHQKAHSIEKPFKCEECGQGFNQSSRLQIHQL
 IHTGEKPYKCEECGKFSRRADLKIHCRIHTGEKPYNCEECGKVFQASNLQAHQVRVHSGEK
 PFKCEECGKSFGRSAHLQAHQVHTGDKPYKCEECGKFKWSLNLDMHQRVHTGEKPYKCGE
 CGKYFSQASSLQLHQSIVHTGEKPYKCDVCGKVFSSSQLQSHQVRVHTGEKPYKCEICGKSF
 SWSRNLTVHHRIVGDKSYKSNRGGKNIRESTQEKKSIK

TRTRPLE - GFP Tag - V

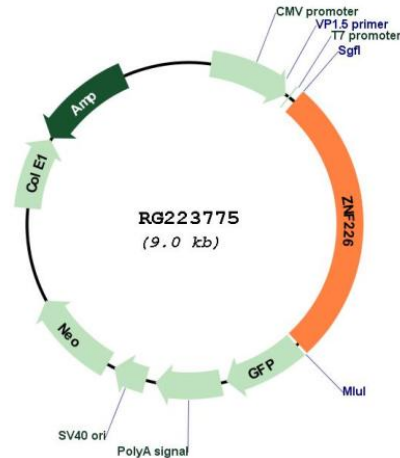
Restriction Sites: SgfI-MluI

Cloning Scheme:

Cloning sites used for ORF Shuttling:



Plasmid Map:



ACCN: NM_001032373

ORF Size: 2409 bp

OTI Disclaimer: The molecular sequence of this clone aligns with the gene accession number as a point of reference only. However, individual transcript sequences of the same gene can differ through naturally occurring variations (e.g. polymorphisms), each with its own valid existence. This clone is substantially in agreement with the reference, but a complete review of all prevailing variants is recommended prior to use. [More info](#)

OTI Annotation: This clone was engineered to express the complete ORF with an expression tag. Expression varies depending on the nature of the gene.

Components: The ORF clone is ion-exchange column purified and shipped in a 2D barcoded Matrix tube containing 10ug of transfection-ready, dried plasmid DNA (reconstitute with 100 ul of water).

Reconstitution Method:

1. Centrifuge at 5,000xg for 5min.
2. Carefully open the tube and add 100ul of sterile water to dissolve the DNA.
3. Close the tube and incubate for 10 minutes at room temperature.
4. Briefly vortex the tube and then do a quick spin (less than 5000xg) to concentrate the liquid at the bottom.
5. Store the suspended plasmid at -20°C. The DNA is stable for at least one year from date of shipping when stored at -20°C.

RefSeq: [NM_001032373.1](#), [NP_001027545.1](#)

RefSeq Size: 2587 bp

RefSeq ORF: 2412 bp

Locus ID: 7769

UniProt ID: [Q9NYT6](#)

Cytogenetics: 19q13.31
Protein Families: Transcription Factors
Gene Summary: May be involved in transcriptional regulation.[UniProtKB/Swiss-Prot Function]