

Product datasheet for **RG223758**

CCDC122 (NM_144974) Human Tagged ORF Clone

Product data:

Product Type:	Expression Plasmids
Product Name:	CCDC122 (NM_144974) Human Tagged ORF Clone
Tag:	TurboGFP
Symbol:	CCDC122
Mammalian Cell Selection:	Neomycin
Vector:	pCMV6-AC-GFP (PS100010)
E. coli Selection:	Ampicillin (100 ug/mL)
ORF Nucleotide Sequence:	>RG223758 representing NM_144974 Red=Cloning site Blue=ORF Green=Tags(s)

TTTTGTAATACGACTCACTATAGGGCGGCCGGAATTCGTCGACTGGATCCGGTACCGAGGAGATCTGCC
GCC**CGATCGCC**

ATGTCAGACAACAAGAAAGGAAGAGTCAAGGATTTCTAAAGAAGATAACCAAGACACAAGTTCATTAG
CTGATGCTGTAGAGAAAGTTGCAAAGCAACAACATCACAAAGCATCAGAGATAGAAAAACAAAAAGGT
TCTGTTCAATTTGAAGAATGAACCTCATGAGCTTGAAAAAGAAATAGCAGCTATCTCTGCAGAACTAAA
GAAACAGAAAGACAAATTTATCAACAAGATTCTGCCATAGAGAATACCAAACCTCATTGTGATAGCCTGG
AAACTCAAATCAAATCCTTACATTCAGAAAATGTAAGCTTAAATTTGACATAGAAACAGCCCAAGAAGA
TTTTGAGGAACACATGATAAAATATAATGCATATTATGCAAAAATAAAAGCACATAAAAAATAGTTTGGGG
GAAGTAGAGAGCAAATGGTCATTTATGACTGAACTCCATGAAAAGCGAGATTTTGTAAAAAATTAAGA
CAATGAAAGAAGAACTTATGCAAGATCTTCAAATCCAGGAGGGAACCGAATAACACAAGTACAGGAAGA
CATTACAACTTAAAGGATAAAATTATAACTGTAAGAATCTATCATTGAAAAACTTGTTTTCTTGAG
GAAGAAAAAAGACACATGAAAAATTAAGAAAAGAAATAGAGGGTCTCGCCCCATCGCCAGGCTAGAGT
GCAGTAGTCAATCTCGGCTCACTGCAAGCTCTGCCTCCCAGGTTACGCCATTCTCTGCCTCAGCCTC
CGGAGTAGCTGGGACTACAGGCGCCTGCCACCACCCAGCTAATTTTTGCATTTTATAGAGACGGG
GTTTACCATGT

ACGCGTACGCGGCCGCTCGAG - GFP Tag - GTTTAA



[View online »](#)

Protein Sequence: >RG223758 representing NM_144974
Red=Cloning site Green=Tags(s)

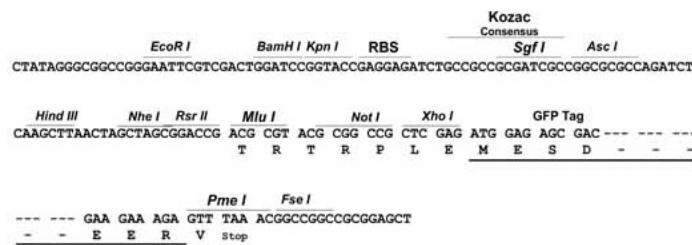
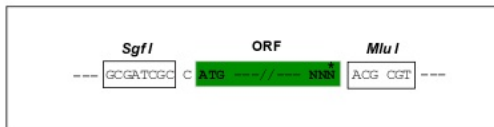
MSDNKERKSQGFPKEDNQDTSSLADAVEKVAKQQSQASEIEKNKKVLFNLKNELEKEIAAISAETK
 ETERQIYQQDSAIENTKLHCDSLETQIKSLHSENVKLFDIETAQEDFEEHMIKYNAYYAKIKAHKNSLG
 EVESKWSFMTLHEKRDFVKKLTMTKEELMQLQNPGGNRITQVQEDITNLKDKIITVKESIEKTCFLE
 EEKKTHEKLRKEIEGLAPSPRLECSSAISAHCKLCLPGSRHSPASASGVAGTTGACHHTQLIFCIFS RDG
 VSFC

TRTRPLE - GFP Tag - V

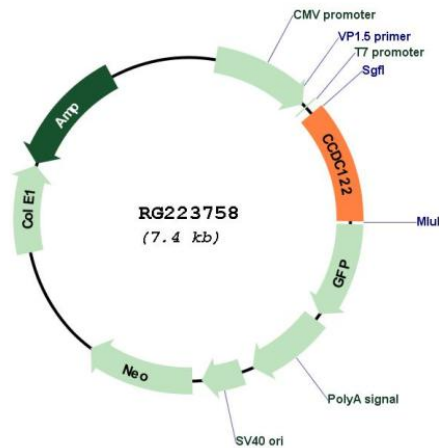
Restriction Sites: SgfI-MluI

Cloning Scheme:

Cloning sites used for ORF Shutting:



Plasmid Map:



ACCN: NM_144974

ORF Size: 852 bp

OTI Disclaimer:	The molecular sequence of this clone aligns with the gene accession number as a point of reference only. However, individual transcript sequences of the same gene can differ through naturally occurring variations (e.g. polymorphisms), each with its own valid existence. This clone is substantially in agreement with the reference, but a complete review of all prevailing variants is recommended prior to use. More info
OTI Annotation:	This clone was engineered to express the complete ORF with an expression tag. Expression varies depending on the nature of the gene.
Components:	The ORF clone is ion-exchange column purified and shipped in a 2D barcoded Matrix tube containing 10ug of transfection-ready, dried plasmid DNA (reconstitute with 100 ul of water).
Reconstitution Method:	<ol style="list-style-type: none">1. Centrifuge at 5,000xg for 5min.2. Carefully open the tube and add 100ul of sterile water to dissolve the DNA.3. Close the tube and incubate for 10 minutes at room temperature.4. Briefly vortex the tube and then do a quick spin (less than 5000xg) to concentrate the liquid at the bottom.5. Store the suspended plasmid at -20°C. The DNA is stable for at least one year from date of shipping when stored at -20°C.
RefSeq:	NM_144974.2
RefSeq Size:	3931 bp
RefSeq ORF:	822 bp
Locus ID:	160857
UniProt ID:	Q5T0U0
Cytogenetics:	13q14.11
Gene Summary:	This gene encodes a protein that contains a coiled-coil domain. Naturally occurring mutations in this gene are associated with leprosy. [provided by RefSeq, Apr 2017]