

Product datasheet for **RG223731**

BRDT (NM_001726) Human Tagged ORF Clone

Product data:

Product Type:	Expression Plasmids
Product Name:	BRDT (NM_001726) Human Tagged ORF Clone
Tag:	TurboGFP
Symbol:	BRDT
Synonyms:	BRD6; CT9; SPGF21
Mammalian Cell Selection:	Neomycin
Vector:	pCMV6-AC-GFP (PS100010)
E. coli Selection:	Ampicillin (100 ug/mL)



[View online »](#)

ORF Nucleotide Sequence:

>RG223731 representing NM_001726
 Red=Cloning site Blue=ORF Green=Tags(s)

TTTTGTAATACGACTCACTATAGGGCGGCCGGGAATTCGTCGACTGGATCCGGTACCGAGGAGATCTGCC
 GCC**CGCATCGCC**

ATGTCTCTGCCAAGTCGACAAACAGCTATTATTGTTAACCTCCTCCACCAGAATATATAAATACTAAGA
 AAAATGGGCGATTGACAAATCACTTCAGTATCTACAAAAAGTTGCTAAAGGATTATGAAGCATAG
 TTTTTCATGGCCCTTTCAACGTCCTGTGGATGCTGTGAAACTACAGTTGCCTGATTATTATACCATTATA
 AAAACCCAATGGATTTAAATACAATTAAGAAGCGCTTGAGAATAAATATTATGCGAAGGCTTCAGAAT
 GTATAGAAGACTTCAATACAATGTTCTCAAATTGTTATTATATAACAAGCCTGGAGATGACATTGTTCT
 TATGGCACAAGCTCTAGAGAAGCTGTTTATGCAGAAATTATCTCAGATGCCACAAGAAGAGCAAGTTGTG
 GGTGTTAAGGAAAGAATCAAGAAAGGCACTCAACAGAATATAGCTGTTTCTTCTGCTAAAGAAAAATCAT
 CACCCAGCGCAACAGAAAAAGTATTTAAGCAGCAAGAAATTCCTTCTGTATTTCTAAGACATCTATTTT
 TCCCTTGAACGTGGTACAGGGAGCTTCAGTCAACTCCAGTTCACAACTGCGGCCCAAGTTACAAAAGGT
 GTGAAGAGGAAAGCAGATACAACAACCTCCTGCACTTCAGCAGTTAAAGCAAGTAGTGAATTTTCTCCAA
 CATTACAGAAAAATCAGTGGCACTGCCACCTATAAAAAGAAAAATGCCAAAAGAAATGTTTGGCAGATTC
 TCAGCAACAATATAATGTTGTGAAGACTGTTAAAGTAACTGAACAATTAAGGCAGCTGTAGTGAGATTCTT
 AAAGAAATGCTTGCAAAGAAACATTTTTTCATATGCATGGCCCTTTTATAATCCTGTTGACGTTAATGCTT
 TGGGACTCCATAACTACTATGACGTTGTCAAAAATCCGATGGATCTTGAACTATTAAGGAGAAAAATGGA
 TAACCAAGAATAAAGGATGCATACAAAATTTGCGGCAGATGTTAGATTAAATGTTTCATGAATTGCTACAAG
 TACAATCCTCCAGATCACGAAGTTGTGACAATGGCAAGAATGCTTCAGGATGTTTTGAAACGCATTTTT
 CAAAGATCCCGATTGAACCTGTTGAGAGTATGCCTTTATGTTACATCAAAAACAGATCACAGAAACCAC
 TGGTAGAGAGAACAATAATGAAGCCTCCTCTGAAGGGAACCTCTTCTGATGATTCTGAAGATGAGCGAGTT
 AAGCGTCTTGCAAAGCTTCAGGAGCAGCTTAAAGCTGTACATCAACAGCTCCAGTTTTGTCCCAAGTAC
 CTTTCCGTAAGCTAAATAAAAAGAAAGAGAAGTCTAAAAAGGAAAAAGAAAAAGAAAGTTAATAACAG
 CAATGAAATCCAAGAAAAATGTGTGAGCAATGAGGCTAAAGGAAAAAGTCCAAGAGAAATCAGCCAAAG
 AAAAGGAAACAACAGTTCATTGGTCTAAAATCTGAAGATGAAGATAATGCTAAACCTATGAACTATGATG
 AGAAAAGGCAGTTAAGTCTGAATATAAACAACCTCCCTGGAGATAAACTGGGCGAGTAGTTCACATAAT
 ACAATCAAGAGAGCCTTCTCTGAGCAATCCAATCCTGATGAGATAGAGATAGACTTTGAAACACTGAAA
 GCATCAACACTAAGAGAATTAGAAAAATATGTTTCGGCATGTCTAAGAAAGAGACCATTAACCTCCTG
 CTAAAGAAAAATAATGATGTCCAAAGAAGAACTTCACTCACAGAAAAACAGGAATTGGAAAAGCGGTTACT
 GGATGTTAATAATCAGTTAAATTTAGAAAAACGTCAAAACAAAATCTGATAAAACGCAACCATCCAAGCT
 GTTGAAAAATGTTTCCCGACTGAGTGAGAGCAGCAGCAGCAGCAGCTCATCAGAGTCTGAAAGTAGCA
 GCAGTGACTTAAGCTCTTCAGACAGCAGTGATTCTGAATCAGAAATGTTCCCTAAGTTTACAGAAGTAAA
 ACCAAATGATTCTCCTTCTAAAGAGAATGTAAAGAAAAATGAAGAATGAATGCATACTGCCTGAAGGAAGA
 ACAGGCGTCACACAGATAGGATATTGTGTGCAAGACACAACCTCTGCCAATACTACCCTTGTTCATCAGA
 CCACACCTTCACATGTAATGCCACCAATCACCACCAATTAGCATTAAATATCAAGAATTAGAACATTT
 ACAGACTGTGAAAAACATTTACCTTTACAATTTCTGCCTCCCTCAGGTATTCTGAACAGCTCTCAAAT
 GGCATAACTGTGATGCATCCATCTGGTGATAGTGACACAACGATGTTAGAATCTGAATGTCAAGCTCCTG
 TACAGAAGGATATAAAGATTAAGAATGCAGATTATGAAAAAGTTTAGGCAAACAGTGAACCATCAGG
 TGTAATGAAATCCTCAGATGAGCTCTTCAACCAATTTAGAAAAGCAGCCATAGAAAAGGAAGTAAAAGCT
 CGGACACAGGAACATACGGAAGCATTGGAACAAAAACAAAAGGAACTAAAAGCATCTCAAGAAAAATC
 AGAGGGATCTTGGGAATGGATTGACTGTAGAATCTTTTTCAAATAAAAACAAAACAAAGTCTCTGGAGA
 AGAGCAGAAAGAATCAGCAGTCATCAGAAGCTCAAGATAAATCCAACTCTGGCTTCTCAAGACCGT
 GATTTAGCAAGGCAGAAAGAACAAGAGAGGAGGAGGAGAGAAGCAATGGTGGTACCATTGATATGACCC
 TTCAAAGTGACATTATGACAATGTTGAAAACAACCTTTGAT

ACGCGTACGCGGCCGCTCGAG - GFP Tag - GTTTAA

Protein Sequence: >RG223731 representing NM_001726
 Red=Cloning site Green=Tags(s)

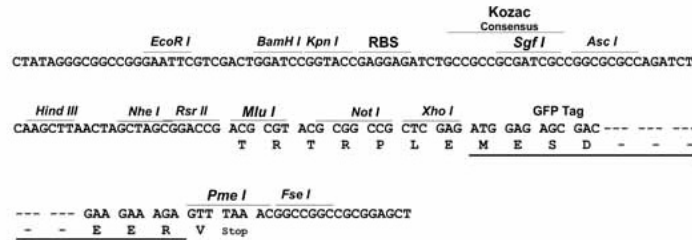
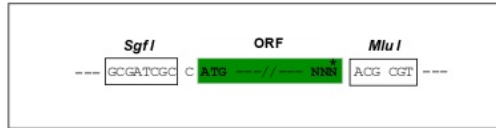
MSLPSRQTAIIVNPPPEYINTKKNGRLTNQLQYLQKVVLDLWKHSFSWPFQRPVDAVKLQLPDYYTII
 KNPMDLNTIKRLENKYAKASECIEDFNTMFSNCYL YNKPGDDIVLMAQALEKLFMQKLSQMPQEEQVV
 GVKERIKKGTQQNI AVSSAKEKSSPSATEKVFVKQEQEIPSVFPKTSISPLNVVQGASVNSSQTAAQVTKG
 VKRKADTTTPATSAVKASSEFSPTFTEKSVLPPIKENMPKNVLPDSQQQYNNVVKTVKVTQLRHCSEIL
 KEMLAKKHFSYAWPFYNPVDVNLGLHNYDVKVKNPMDLGTIKEKMDNQEYKDAYKFAADVRLMFMNCYK
 YNPPDHEVVTMARMQLQVDFETHFSKIPIEPVESMPLCYIKTDITETTGRENTNEASSEGNSSDSEDERV
 KRLAKLQEQLKAVHQQLQVLSQVPFRKLNKKKEKSKKEKKEKVNNSNENPRKMCEQMLRLEKSKRNQPK
 KRKQQF IGLKSEEDNAKPMNYDEKRQLSLNINKLPGDKLGRVVHIIQSREPSLSNSNPDEIEIDFETLK
 ASTLRELEKYVSACLRRRPLKPPAKKIMMSKEELHSQKKQLEKRLLDVNNQLNSRKRQTKSDKTQPSKA
 VENVSRLSESSSSSSSESSSSDLSSDSSDSESEMFPKFTEVKPNDSPSKENVKMKNECILPEGR
 TGVTVIGYCVQDTSANTTLVHQTTPSHVMPNHHQLAFNYQLEHLQTVKNI SPLQILPPSGDSEQLSN
 GITVMHPSGSDTTMLESECQAPVQKDIKKNADSWKSLGKPKVPSGVMKSSDELNFQFRKAAIEKEVKA
 RTQELIRKHLEQNTKELKASQENQRDLGNGLTVESFSNKIQNKCSGEEQKEHQSSSEAQDKSKLWLLKDR
 DLARQKEQERRRREAMVGTIDMTLQSDIMTMFENNFD

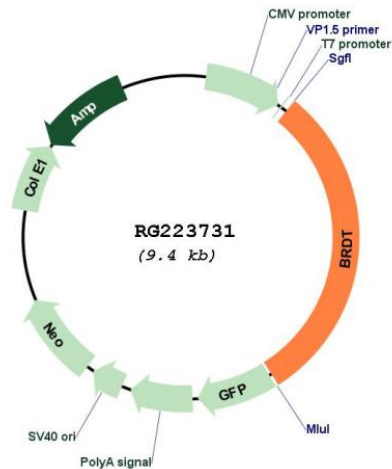
TRTRPLE - GFP Tag - V

Restriction Sites: SgfI-MluI

Cloning Scheme:

Cloning sites used for ORF Shuttling:



Plasmid Map:


ACCN: NM_001726

ORF Size: 2841 bp

OTI Disclaimer: The molecular sequence of this clone aligns with the gene accession number as a point of reference only. However, individual transcript sequences of the same gene can differ through naturally occurring variations (e.g. polymorphisms), each with its own valid existence. This clone is substantially in agreement with the reference, but a complete review of all prevailing variants is recommended prior to use. [More info](#)

OTI Annotation: This clone was engineered to express the complete ORF with an expression tag. Expression varies depending on the nature of the gene.

Components: The ORF clone is ion-exchange column purified and shipped in a 2D barcoded Matrix tube containing 10ug of transfection-ready, dried plasmid DNA (reconstitute with 100 ul of water).

Reconstitution Method:

1. Centrifuge at 5,000xg for 5min.
2. Carefully open the tube and add 100ul of sterile water to dissolve the DNA.
3. Close the tube and incubate for 10 minutes at room temperature.
4. Briefly vortex the tube and then do a quick spin (less than 5000xg) to concentrate the liquid at the bottom.
5. Store the suspended plasmid at -20°C. The DNA is stable for at least one year from date of shipping when stored at -20°C.

RefSeq: [NM_001726.3](#)

RefSeq Size: 3119 bp

RefSeq ORF: 2844 bp

Locus ID: 676

UniProt ID: [Q58F21](#)

Cytogenetics: 1p22.1

Protein Families: Protein Kinase, Transcription Factors

Gene Summary: BRDT is similar to the RING3 protein family. It possesses 2 bromodomain motifs and a PEST sequence (a cluster of proline, glutamic acid, serine, and threonine residues), characteristic of proteins that undergo rapid intracellular degradation. The bromodomain is found in proteins that regulate transcription. Several transcript variants encoding multiple isoforms have been found for this gene. [provided by RefSeq, Jun 2011]