

Product datasheet for **RG223721**

Casein (CSN1S1) (NM_001890) Human Tagged ORF Clone

Product data:

Product Type: Expression Plasmids
Product Name: Casein (CSN1S1) (NM_001890) Human Tagged ORF Clone
Tag: TurboGFP
Symbol: Casein
Synonyms: CASA; CSN1
Mammalian Cell Selection: Neomycin
Vector: pCMV6-AC-GFP (PS100010)
E. coli Selection: Ampicillin (100 ug/mL)
ORF Nucleotide Sequence: >RG223721 representing NM_001890
 Red=Cloning site Blue=ORF Green=Tags(s)

TTTTGTAATACGACTCACTATAGGGCGCCGGGAATTCGTCGACTGGATCCGGTACCGAGGAGATCTGCC
 GCC**CGATCGCC**

ATGAGGCTTCTCATTCTCACCTGTCTTGTGGCTGTTGCTCTTGCCAGGCCTAACTTCCTCTTAGATACC
 CAGAACGCCTTCAGAATCCATCAGAGAGCAGTGAGCCTATACCATTAGAATCAAGAGAGGAATACATGAA
 TGGTATGAACAGGCAGAGAAACATTCTGAGAGAAAAACAGACTGATGAAATCAAGGATACTAGGAATGAG
 TCTACTCAGAAGTGTGTGGCAGAGCCTGAGAAGATGGAATCCAGCATCAGTTCATCGAGTGAGGAAA
 TGTCTCTCAGTAAGTGTGCGGAACAGTTTGTAGACTGAACGAATACAACCAACTTCAGCTGCAAGCTGC
 CCATGCCCAGGAGCAAATTCGCAGAATGAATGAAAACAGCCATGTCCAAGTGCCTTCCAGCAGCTCAAC
 CAACTTGTGCCTACCCCTATGCTGTTTGGTACTATCCACAAATCATGCAGTATGTTCTTTCCACCGT
 TTTCCGACATCTCCAATCCCCTGCTCATGAAAATTATGAAAAAATAACGTCATGCTACAGTGG

ACGCGTACGCGGCCGCTCGAG - GFP Tag - GTTTAA

Protein Sequence: >RG223721 representing NM_001890
 Red=Cloning site Green=Tags(s)

MRLILTCLVAVALARPKLPLRYPERLQNPSESSEPIPLESREEYMNGMNRQRNLRKQTDKIDTRNE
 STQNCVVAEPEKMESSISSSEEMSLSKAEQFCRLNEYNQLQLQAAHAQEQIRRMNENSHVQVPPFQQLN
 QLAAYPYAVWYYPQIMQYVPPFPFSDISNPTAHENYEKNNVMLQW

TRTRPLE - GFP Tag - V

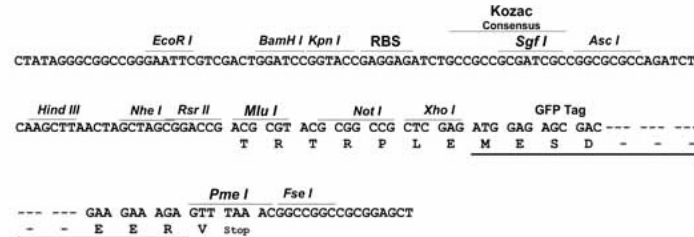
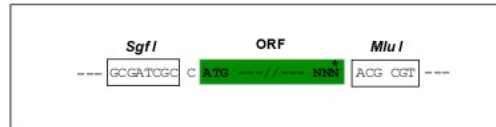
Restriction Sites: SgfI-MluI



[View online »](#)

Cloning Scheme:

Cloning sites used for ORF Shutting:



ACCN: NM_001890

ORF Size: 555 bp

OTI Disclaimer: The molecular sequence of this clone aligns with the gene accession number as a point of reference only. However, individual transcript sequences of the same gene can differ through naturally occurring variations (e.g. polymorphisms), each with its own valid existence. This clone is substantially in agreement with the reference, but a complete review of all prevailing variants is recommended prior to use. [More info](#)

OTI Annotation: This clone was engineered to express the complete ORF with an expression tag. Expression varies depending on the nature of the gene.

Components: The ORF clone is ion-exchange column purified and shipped in a 2D barcoded Matrix tube containing 10ug of transfection-ready, dried plasmid DNA (reconstitute with 100 ul of water).

- Reconstitution Method:
1. Centrifuge at 5,000xg for 5min.
 2. Carefully open the tube and add 100ul of sterile water to dissolve the DNA.
 3. Close the tube and incubate for 10 minutes at room temperature.
 4. Briefly vortex the tube and then do a quick spin (less than 5000xg) to concentrate the liquid at the bottom.
 5. Store the suspended plasmid at -20°C. The DNA is stable for at least one year from date of shipping when stored at -20°C.

RefSeq: [NM_001890.2](#)

RefSeq Size: 981 bp

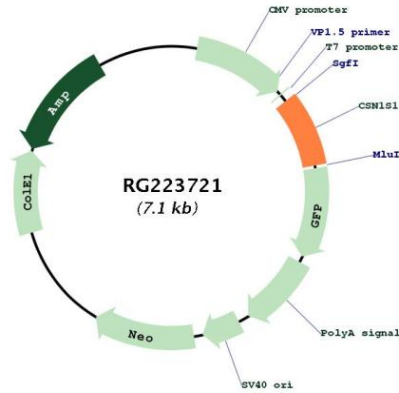
RefSeq ORF: 558 bp

Locus ID: 1446

UniProt ID: [P47710](#)

Cytogenetics: 4q13.3
Protein Families: Secreted Protein
Gene Summary: Important role in the capacity of milk to transport calcium phosphate.[UniProtKB/Swiss-Prot Function]

Product images:



Circular map for RG223721