

Product datasheet for **RG223705**

ZC3H12C (NM_033390) Human Tagged ORF Clone

Product data:

Product Type:	Expression Plasmids
Product Name:	ZC3H12C (NM_033390) Human Tagged ORF Clone
Tag:	TurboGFP
Symbol:	ZC3H12C
Synonyms:	MCPIP3
Mammalian Cell Selection:	Neomycin
Vector:	pCMV6-AC-GFP (PS100010)
E. coli Selection:	Ampicillin (100 ug/mL)



[View online »](#)

**ORF Nucleotide
Sequence:**

>RG223705 representing NM_033390
 Red=Cloning site Blue=ORF Green=Tags(s)

TTTTGTAATACGACTCACTATAGGGCGGCCGGAATTCGTCGACTGGATCCGGTACCGAGGAGATCTGCC
 GCC**CGGATCGCC**

ATGCCGGTGGCGCTCCAGGAATACGGGTGCTTTGCATTAGGAATACAGAAAAACAGCAAAGTGG
 AGTCAAGTACACGTAACAACCTCATGGGCTTGAAGGATCACCTAGGGCATTGACCTCGGCCACCTTTATGT
 GGAGAGCACTGACCCACAGTTAAGTCCAGCTGTACCTTGGTCAACAGTAGAAAAACCAAGTATGGATACC
 GTTAATGTGGGAAGGATGAAAAAGAGGCGTCTGAAGAGAATGCAAGCTCTGGTACTCTGAAGAAAAACA
 CAAATTCTGATCATGAGTCAGAACAATTGGGTAGCATTTCAGTAGAGCCAGGCTTGATAACTAAGACTCA
 CAGACAGCTCTGCAGGTCTCCCTGTTTAGAGCCTCACATACTCAAGCGCAATGAAATTTTGAAGACTTT
 AAACCTGAAGAGTCCCAGACTACATCCAAGGAAGCAAAGAAACCACCTGATGTGGTGCAGAGATACAAA
 CAAAAGTGGAGTTGCACCTAAGTTAGGTTATTCTGAAGAACAGGTTAGCTTGTACTAAACAACTTGG
 TACTGATGCTTTAATCAATGATATTTGGGAGAACTTGCAAACCTGGAAATAAAAGTGAGGCTGATCAA
 ACGGTTAGTACAATTAACACTATAACACGGGAACTTCTCCCTGGAATCTCAGAGGTCTGAATCTCCAA
 TGCAAGAGATTGTAACAGATGATGGTGAATCTGAGACCAATAGTTATTGATGGCAGCAATGTGGCAAT
 GAGCCATGGAAACAAAGAAGTATTTTCTCGAGAGGAATAAAATTGGCAGTGGATTGGTTTTTGGAAAGA
 GGCCACAAAGACATTACAGTTTTTGTCTGCTTGGAGGAAAGAGCAATCCCAGCTGATGCTCTCATT
 CAGATCAGGAAATTTACGTAATTAGAGAAGGAGAAAATCCTGGTGTTCAGCCATCCCAGGAGTCCA
 GGGGAGGAGAGTGGTGTCTATGACGACAGGTTTCATCGTGAAGCTGGCTTTTGGTGGCAGGATCATT
 GTGTCCAATGATAACTACAGGACTTGGCTAATGAGAAGCCAGAATGGAAGAAGTTCATAGATGAACGAT
 TATTAAGTATTCAATTTGTCAATGACAAGTTTCATGCCCCCTGATGACCCTCTTGGCAGACATGGCCCCAG
 TCTGGATAATTTTCTGAGGAAGAAACCTATTGTTCTGAAACAAAAAGCAGCCTTGTCCATATGGAAAG
 AAGTGTACCTATGGACACAAGTGCAATATTACCATCCCAGGAGGGCAGTACGCCACAGCGGTCTAGTGG
 CTGATGAACTCCGTGCCATGTCTAGAAATACGGCAGCCAAAACCTGCAAACGAAGGAGGACTGGTGAAGG
 CAACAGTGTCTCTGTAGCACCAAGGCTGATAGCACTTCTGATGTCAAACGAGGTGCTCAAAGAGGCAA
 TCAGATCCAAGCATAAGGACACAAGTCTACCAAGACCTAGAAGAAAAGCTTCCACCAAAAAACAAATTGG
 AAACAGGTCTGTACCTTCTTAGTTAGCATCCCAGCTACTTCTACTGCAAAACCCCAAAGCACTACATC
 TTTAAGCAATGGCCTTCCATCTGGAGTTCATTTCCACCTCAGGATCAAAGACCACAGGGACAATATCCT
 TCAATGATGATGGCAACCAAAAAATCATGGAACGCCAATGCCTTATGAACAGTATCCAAAATGTGACTCAC
 CTGTGACATCGGATATTATTCCATGTTGAATGCATACTCAAATCTGAGTCTCTCAGGCCACGAAGCCC
 TGAAAGGCGTTTCTCCTTAGACACAGATTATAGAATAAGTTCCGTAGCTTCTGACTGCAGCAGTGAAGGG
 AGCATGAGCTGTGGGAGCAGTACTCCTACGTGGGTTACAATGACCGGTCTATGTGAGCTCCCCGACC
 CACAGCTAGAGGAGAATTTGAAGTGTCAACACATGCACCCTCACAGCCGCTTAATCCTCAACCGTTCT
 GCAGAATTTCCACGACCCTTAACCAGAGGGCAAAGTTACAGTACGAAGAACCAAAGTTCCATCACAAG
 CCTCCTTCCGACCTGGCTCTGCACCTGCCGCACTCCGCTGTGGGCGCCCGTCCAGCTGTCTGGCG
 ACTACCCTCTCCTCAAAGTTTCAAGCACTCTAAGGCACCACCTAGGGAGGTCCTTGGTGGCCACGAG
 AATAGACAGCATCTGACTCTGACTTTATGACAGTTCTCCTTACGACAAAAGAAAGCCTTATTTCCCGC
 CAGGAAGGCTGGGAAGCTGGGAGAGGCCAGGCTATGGGATCGACGCTATGGGTACCGGACAGACTATT
 CCTTGGCCGATAACTCCACACAGCCGTGTATGAGCAGTTCACCTTCCAGAGCCTCCCTGAGCAACAGGA
 GCCAGCTGGCGGATCCCATACTGTGGAATGCCGCAAGATCCCCGAGGTATCAAGACAACCGAGAAAAG
 ATTTATATCAATTTGTGCAACATCTTCCCCCTGACCTTGTGAGAATTGTCATGAAAAGGAATCCTCACA
 TGACAGACGCCAGCAGCTCGCCGAGCCATTTAGTGGAGAAATCCAGCTGGGTTAT

ACGGTACGCGGCCGCTCGAG - GFP Tag - GTTTAA

Protein Sequence: >RG223705 representing NM_033390
 Red=Cloning site Green=Tags(s)

MPGGGSQEYGVLCIQEYRKNSKVESSTRNFMGLKDHLGHDLGHLYVESTDPQLSPAVPWSTVENPSMDT
 VNVGKDEKEASEENASSGDSEENTNSDHESEQLGSI SVEPGLITKTHRQLCRSPCLEPHILKRNEILQDF
 KPEESQTTTSKEAKKPPDVVREYQTKLEFALKLGYSEEQVQLVLNKLGTDALINDILGELVKLGNKSEADQ
 TVSTINTITRETSSLESQRSESPMQEIVTDDGENLRPIVIDGSNVAMSHGNKEVFCRGIKLAVDWFLER
 GHKDITVFPAPWRKEQSRPDALITDQEILRKLEKEKILVFTPSRRVQGRRVVVCYDDRFIVKLAFESDGI
 VSNDNYRDLANEKPEWKKFIDERLLMYSFVNDKFMPPDDPLGRHGPSLDNFLRKKPIVPEHKKQPCPYGK
 KCTYGHKCKYYHPERGSQPQRSVADELRAMSRNTAAKTANEGGLVKSNSVPCSTKADSTSDVKRGAPKRQ
 SDPSIRTQVYQDLEEKLPKNLETRSVPSLVSIPATSTAKPQSTTSLNGLPSGVHFPDQRPQGGQYP
 SMMMATKNHGTMPYEQYPKCDSPVDIGYYSMLNAYSNL SLSGPRSPERRFLD TDYRISVASDCSSEG
 SMSCGSSDSYVGYNDRSYVSSPDQLEENLKCQHMHPSRLNPQPF LQNFHDPL TRGQSYSHPEPKFHHK
 PPLPHLALHLPASVAVGARSSCPGDYSPSSAHSKAPHLGRSLVATRIDSISDSRLYDSSSRQRKPYSR
 QEGLGSWERPQYIDAYGYRQTYSLPDNSTQPCYEQFTFQSLPEQQEPAWRIPYCGMPQDPPRYQDNREK
 IYINLCNIFPPDLVRIVMKRNPHMTDAQQLAAAILVEKSQLGY

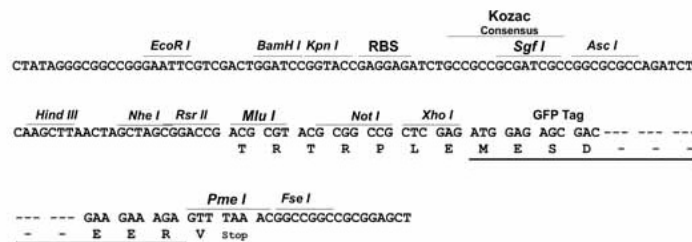
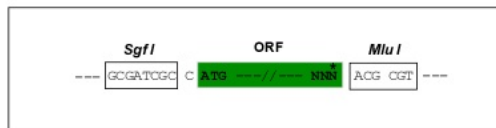
TRTRPLE - GFP Tag - V

Restriction Sites:

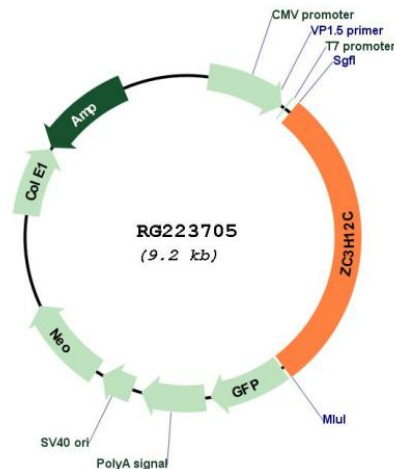
SgfI-MluI

Cloning Scheme:

Cloning sites used for ORF Shuttling:



Plasmid Map:



ACCN: NM_033390

ORF Size: 2649 bp

OTI Disclaimer: The molecular sequence of this clone aligns with the gene accession number as a point of reference only. However, individual transcript sequences of the same gene can differ through naturally occurring variations (e.g. polymorphisms), each with its own valid existence. This clone is substantially in agreement with the reference, but a complete review of all prevailing variants is recommended prior to use. [More info](#)

OTI Annotation: This clone was engineered to express the complete ORF with an expression tag. Expression varies depending on the nature of the gene.

Components: The ORF clone is ion-exchange column purified and shipped in a 2D barcoded Matrix tube containing 10ug of transfection-ready, dried plasmid DNA (reconstitute with 100 ul of water).

Reconstitution Method:

1. Centrifuge at 5,000xg for 5min.
2. Carefully open the tube and add 100ul of sterile water to dissolve the DNA.
3. Close the tube and incubate for 10 minutes at room temperature.
4. Briefly vortex the tube and then do a quick spin (less than 5000xg) to concentrate the liquid at the bottom.
5. Store the suspended plasmid at -20°C. The DNA is stable for at least one year from date of shipping when stored at -20°C.

RefSeq: [NM_033390.2](#)

RefSeq Size: 8807 bp

RefSeq ORF: 2652 bp

Locus ID: 85463

UniProt ID: [Q9C0D7](#)

Cytogenetics: 11q22.3

Gene Summary: May function as RNase and regulate the levels of target RNA species.[UniProtKB/Swiss-Prot Function]