

Product datasheet for **RG223678**

IL37 (NM_173202) Human Tagged ORF Clone

Product data:

Product Type: Expression Plasmids
Product Name: IL37 (NM_173202) Human Tagged ORF Clone
Tag: TurboGFP
Symbol: IL37
Synonyms: FIL1; FIL1(ZETA); FIL1Z; IL-1F7; IL-1H; IL-1H4; IL-1RP1; IL-23; IL-37; IL1F7; IL1H4; IL1RP1
Mammalian Cell Selection: Neomycin
Vector: pCMV6-AC-GFP (PS100010)
E. coli Selection: Ampicillin (100 ug/mL)
ORF Nucleotide Sequence: >RG223678 representing NM_173202
Red=Cloning site Blue=ORF Green=Tags(s)

TTTTGTAATACGACTCACTATAGGGCGGCCGGAATTCGTCGACTGGATCCGGTACCGAGGAGATCTGCC
GCC**CGGATCGCC**

ATGTCCTTTGTGGGGGAGAAGTCAAGGAGTAAAAATGGGCTCTGAGGACTGGGAAAAAGATGAACCCAGT
GCTGCTTAGAAGGTCAAAGGTGAAGAAGTAAACCCGAAGAAATTCAGCATTATGACCAGGATCACAA
AGTACTGGTCTGGACTCTGGGAATCTCATAGCAGTTCAGATAAAAACTACATACGCCAGAGATCTTC
TTTGCATTAGCCTCATCCTTGAGCTCAGCCTCTGCGGAGAAAGGAAGTCCGATTCTCTGGGGGTCTCTA
AAGGGGAGTTTTGTCTCTACTGTGACAAGGATAAAGGACAAAGTCATCCATCCCTTCAGCTGAAGAAGGA
GAAACTGATGAAGCTGGCTGCCAAAAGGAATCAGCACGCCGCCCTTCATCTTTATAGGGCTCAGGTG
GGCTCCTGGAACATGCTGGAGTCGGCGGCTCACCCGGATGGTTCATCTGCACCTCCTGCAATTGTAATG
AGCCTGTTGGGGTGACAGATAAAATTTGAGAACAGGAAACACATTGAATTTTCATTCAACAGTTTGCAA
AGCTGAAATGAGCCCCAGTGAGGTCAGCGAT

ACGCGTACGCGGCCGCTCGAG - GFP Tag - GTTTAA

Protein Sequence: >RG223678 representing NM_173202
Red=Cloning site Green=Tags(s)

MSFVGENSGVKMGSEDEWEKDEPQCCELEGPKVKNLNPCKFSIHDQDHKVLVLDGSLIAVPDKNYIRPEIF
FALASSLSSASAEKGSPIILLGVSKGEFCLYCDKDKGQSHPSLQLKKEKLMKLAQAQKESARRPFIFYRAQV
GSWNMLESAHPGWFICTSCNENEPVGVTDKFNKRKHIEFSFQPVCKAEMSPSEVSD

TRTRPLE - GFP Tag - V

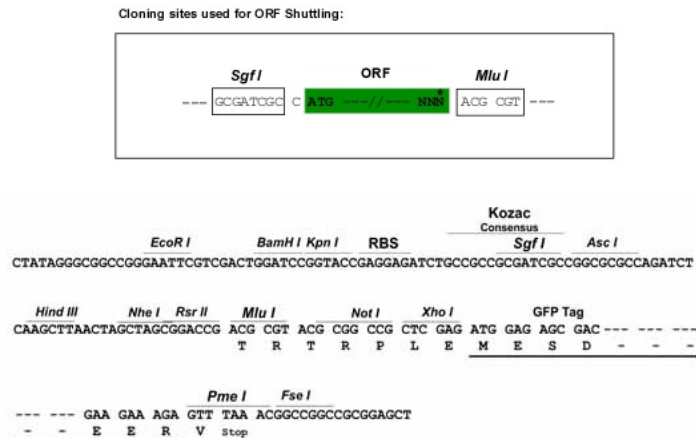
Chromatograms: https://cdn.origene.com/chromatograms/ja2528_e09.zip



[View online »](#)

Restriction Sites: SgfI-MluI

Cloning Scheme:



ACCN: NM_173202

ORF Size: 591 bp

OTI Disclaimer: The molecular sequence of this clone aligns with the gene accession number as a point of reference only. However, individual transcript sequences of the same gene can differ through naturally occurring variations (e.g. polymorphisms), each with its own valid existence. This clone is substantially in agreement with the reference, but a complete review of all prevailing variants is recommended prior to use. [More info](#)

OTI Annotation: This clone was engineered to express the complete ORF with an expression tag. Expression varies depending on the nature of the gene.

Components: The ORF clone is ion-exchange column purified and shipped in a 2D barcoded Matrix tube containing 10ug of transfection-ready, dried plasmid DNA (reconstitute with 100 ul of water).

Reconstitution Method:

1. Centrifuge at 5,000xg for 5min.
2. Carefully open the tube and add 100ul of sterile water to dissolve the DNA.
3. Close the tube and incubate for 10 minutes at room temperature.
4. Briefly vortex the tube and then do a quick spin (less than 5000xg) to concentrate the liquid at the bottom.
5. Store the suspended plasmid at -20°C. The DNA is stable for at least one year from date of shipping when stored at -20°C.

RefSeq: [NM_173202.1](#), [NP_775294.1](#)

RefSeq Size: 724 bp

RefSeq ORF: 594 bp

Locus ID: 27178

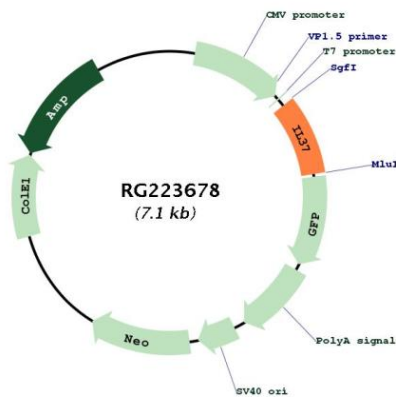
UniProt ID: [Q9NZH6](#)

Cytogenetics: 2q14.1

Protein Families: Druggable Genome, Secreted Protein

Gene Summary: The protein encoded by this gene is a member of the interleukin 1 cytokine family. This cytokine can bind to, and may be a ligand for interleukin 18 receptor (IL18R1/IL-1Rrp). This cytokine also binds to interleukin 18 binding protein (IL18BP), an inhibitory binding protein of interleukin 18 (IL18), and subsequently forms a complex with IL18 receptor beta subunit, and through which it inhibits the activity of IL18. This gene along with eight other interleukin 1 family genes form a cytokine gene cluster on chromosome 2. Five alternatively spliced transcript variants encoding distinct isoforms have been reported. [provided by RefSeq, Jul 2008]

Product images:



Circular map for RG223678