

Product datasheet for **RG223674**

GCHFR (NM_005258) Human Tagged ORF Clone

Product data:

Product Type: Expression Plasmids
Product Name: GCHFR (NM_005258) Human Tagged ORF Clone
Tag: TurboGFP
Symbol: GCHFR
Synonyms: GFRP; HsT16933; P35
Mammalian Cell Selection: Neomycin
Vector: pCMV6-AC-GFP (PS100010)
E. coli Selection: Ampicillin (100 ug/mL)
ORF Nucleotide Sequence: >RG223674 representing NM_005258
Red=Cloning site **Blue**=ORF **Green**=Tags(s)

TTTTGTAATACGACTCACTATAGGGCGGCCGGAATTCGTCGACTGGATCCGGTACCGAGGAGATCTGCC
GCC**CGATCGCC**

ATGCCCTACCTGCTCATCAGCACCCAGATCCGCATGGAGGTGGGCCCACTATGGTGGGCGATGAACAGT
CGGATCCAGAGCTGATGCAGCATCTGGGGCTTCAAAGAGAAGAGCCTTGGGAAACAACCTTTATGAATA
CTACGTCGATGACCCCTCCCGCATAGTCTGGACAAGCTGGAACGCAGGGGCTCCGTGTGCTGAGCATG
ACGGGGTGGCCAGACGCTGGTGTGGTCTGCACAAGGAG

AGCGGACCGACGCGTACGCGGCCGCTCGAG - GFP Tag - GTTTAA

Protein Sequence: >RG223674 representing NM_005258
Red=Cloning site **Green**=Tags(s)

MPYLLISTQIRMEVGPTMVGDEQSDPELMQHLGASKRRALGNNFYEYYVDDPPRIVLDKLERRGFRVLSM
TGVGQTLVWCLHKE

SGPTRRRLE - GFP Tag - V

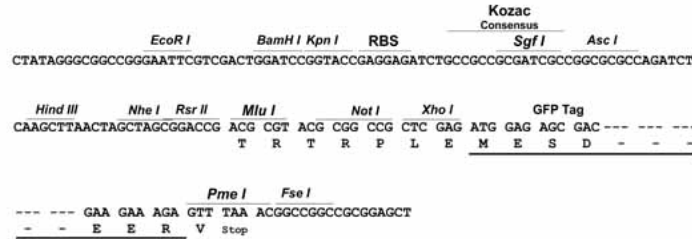
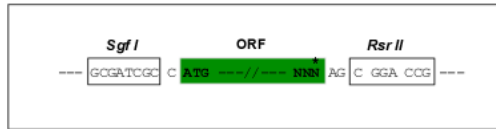
Restriction Sites: SgfI-RsrII



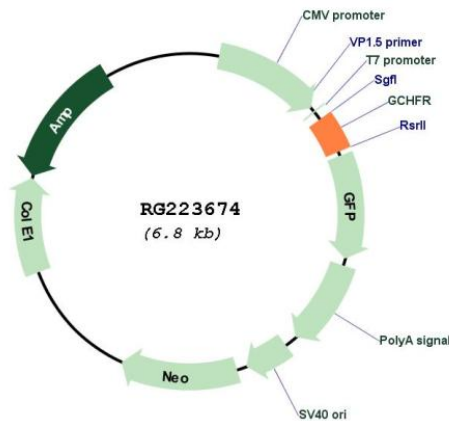
[View online »](#)

Cloning Scheme:

Cloning sites used for ORF Shuttling:



Plasmid Map:



ACCN: NM_005258

ORF Size: 252 bp

OTI Disclaimer: The molecular sequence of this clone aligns with the gene accession number as a point of reference only. However, individual transcript sequences of the same gene can differ through naturally occurring variations (e.g. polymorphisms), each with its own valid existence. This clone is substantially in agreement with the reference, but a complete review of all prevailing variants is recommended prior to use. [More info](#)

OTI Annotation:	This clone was engineered to express the complete ORF with an expression tag. Expression varies depending on the nature of the gene.
Components:	The ORF clone is ion-exchange column purified and shipped in a 2D barcoded Matrix tube containing 10ug of transfection-ready, dried plasmid DNA (reconstitute with 100 ul of water).
Reconstitution Method:	<ol style="list-style-type: none">1. Centrifuge at 5,000xg for 5min.2. Carefully open the tube and add 100ul of sterile water to dissolve the DNA.3. Close the tube and incubate for 10 minutes at room temperature.4. Briefly vortex the tube and then do a quick spin (less than 5000xg) to concentrate the liquid at the bottom.5. Store the suspended plasmid at -20°C. The DNA is stable for at least one year from date of shipping when stored at -20°C.
RefSeq:	NM_005258.3
RefSeq Size:	713 bp
RefSeq ORF:	255 bp
Locus ID:	2644
UniProt ID:	P30047
Cytogenetics:	15q15.1
Gene Summary:	GTP cyclohydrolase I feedback regulatory protein binds to and mediates tetrahydrobiopterin inhibition of GTP cyclohydrolase I. The regulatory protein, GCHFR, consists of a homodimer. It is postulated that GCHFR may play a role in regulating phenylalanine metabolism in the liver and in the production of biogenic amine neurotransmitters and nitric oxide. [provided by RefSeq, Jul 2008]