

Product datasheet for **RG223671**

PREX2 (NM_024870) Human Tagged ORF Clone

Product data:

Product Type:	Expression Plasmids
Product Name:	PREX2 (NM_024870) Human Tagged ORF Clone
Tag:	TurboGFP
Symbol:	PREX2
Synonyms:	DEP.2; DEPDC2; P-REX2; PPP1R129
Mammalian Cell Selection:	Neomycin
Vector:	pCMV6-AC-GFP (PS100010)
E. coli Selection:	Ampicillin (100 ug/mL)
ORF Nucleotide Sequence:	>RG223671 representing NM_024870 Red=Cloning site Blue=ORF Green=Tags(s)

TTTTGTAATACGACTCACTATAGGGCGGCCGGAATTCGTCGACTGGATCCGGTACCGAGGAGATCTGCC
GCC**CGATCGCC**

ATGAGCGAGGACAGCCGCGGAGACAGCCGCGCCGAGAGCGCCAAGGACCTGGAGAAGCAGCTTCGCCTGC
GCGTGTGCGTGCTCAGCGAGCTCCAGAAGACCGAGCGGGACTATGTGGGCACGCTGGAGTTCCTGGTGTC
GGCATTCTTACACAGAATGAACCAAGTGTGCAGCATCAAAAGTTGACAAAAATGTGACAGAAGAAACAGTG
AAGATGTTGTTCTCAAACATTGAAGACATCCTTGCAGTACATAAAGAATCTTAAAAGTCGTGGAAGAAT
GCTTACACCCGAACCTAATGCTCAACAAGAAGTGGGAACCTGCTTCTTCACTTTAAAGACAAGTTTCG
TATCTATGATGAATATTGTAGTAACCATGAGAAGGCACAAAAATTACTTCTTGAACCAACAAAAATAAGA
ACAATCCGGACATTTCTTTTGAACCTGCATGCTGCTTGGAGGACGGAAGAACACAGATGTTCCCTTGGAA
GATATTTAGTAACACCAATACAAAGAATATGCAAGTACCCTCTTATTTTGAAGGAGTTGCTGAAGCGGAC
TCCACGGAAACACAGTGACTATGCAGCAGTGATGGAAGCCCTCCAAGCCATGAAAGCTGTCTGTTCCAAC
ATAAACGAGGCCAAGAGACAGATGGAGAAGTTAGAAGTTTTAGAGGAATGGCAGTCTCACATTGAAGGCT
GGGAGGGTCCAACATCACTGACACCTGCACTGAAATGCTAATGTGTGGAGTCTTACTGAAAATTTCTTC
TGAAAATATTCAAGAACGGGTGTTTTTTCTTTTCGATAATCTTTTGGTGTACTGCAAAAAGAAAACACAGA
CGTTTGAAGAACAGCAAGGCATCTACAGATGGACATCGGTACCTTTTTCTGGCCGATCAACACGGAGG
TGATGGAAGTGGAGAATGTGGATGATGGCACCGCTGATTTCCATAGCAGTGGACACATTGTTGTTAATGG
ATGGAAGATACATAACACAGCAAAAAATAAATGTTTTGTTGTATGGCAAAAACCTGAAGAGAAGCAT
GAATGGTTTGAAGCTATTTTGAAGAAAGAGAACGGCGGAAAGGTTAAAATTAGGAATGGAGCAAGATA
CCTGGGTCATGATCTCTGAACAGGGTGAGAACTTTATAAAATGATGTGCAGACAAGGAAATCTGATCAA
AGACCGAAAGAGAAAAGTACTACGTTCCCTAAATGCTTTCTTGGAAAGCGAATTTGTGTCATGGCTGTTG
GAAATTTGGAGAGATTACAGGCCTGAGGAAGCGTGCCTTGGGACAAGCATTATTAGAAAATGGAATCA
TTCACCATGTTACTGATAAATCAATTCAAACCAGAACAGATGTTATATAGATTTGCTATGATGATGG
AACATTTTATCCAAGAAATGAGATGCAGGACGTGATTTCAAAGGGTGAAGATTATTGTCGTCTTCAT



[View online »](#)

AGCCTTTTACTCCAGTGATAAGAGATAAAGATTACCATTTAAGGACCTACAAATCTGTGGTCATGGCCA
 ACAAAGTATAGACTGGTTAATTGCACAGGGAGATTGCCGACCAGAGAAGAGGCAATGATATTTGGCGT
 TGGACTCTGTGACAAATGGATTTATGCACCATGTCTTGAAAAAGCGAATTCAAAGATGAACCCCTACTT
 TTCCGTTTTTTTTCGGATGAGGAAATGGAGGGATCAAATATGAAACATCGACTTATGAAACATGACTTAA
 AAGTTGTGAAAAATGTTATAGCTAAGTCATTATTGATTAATCCAATGAAGGCAGCTATGGCTTTGGATT
 AGAAGACAAAAATAAAGTTCCAATAATAAAGTTGGTAGAAAAGGGATCTAATGCTGAGATGGCTGGCATG
 GAAGTCGGGAAAAAGATTTTTGCTATTAATGGTGACCTAGTTTTTATGAGACCTTCAATGAAGTGGATT
 GCTTCTGAAATCGTGTTTAAACAGCAGAAAACTCTAAGAGTCTTGTGAGCACAAAGCCAAGAGAGAC
 AGTGAAAAATCCAGATTCAGCTGATGGACTTGGCTTCCAGATCCGGGGATTTGGCCCTTCTGTTGTGCAT
 GCTGTAGGAAGAGGAAGTGTGGCTGCAGCAGCTGGTCTTACCCTGGACAGTGCATTATCAAGGTGAATG
 GAATCAATGTCAGCAAAGAGACACATGCCAGTGTATTGCACACGTTACAGCCTGCAGGAAGTACAGGCG
 GCCAACGAAGCAAGATTCATACAATGGGTTTATAATAGCATTGAGAGTGTCTCAAGAAGACCTTCAAAAA
 TCTCACTCCAAGCCCCCTGGAGATGAAGCAGGGGATGCTTTTGACTGTAAAGTAGAAGAGGTTATTGACA
 AATTCAACACTATGGCCATCATTGATGGGAAGAAGGAGCATGTGAGTCTGACAGTGGACAATGTCCACCT
 GGAATATGGTGTGCTGTATGAGTACGACAGCACAGCTGGCATCAAGTGAATGTGGTGGAAAAGATGATT
 GAGCCCAAAGGTTTCTTCAAGTTAACTGCCAAGATTCTTGAAGCCCTGGCTAAAAGTGATGAGCATTG
 TACAAAATGTACCAGCCTAAATCTCTAAATGAAGTGATTCTACTGACCTTCCAGAGTAAATTCAGTGC
 CCTTGTGAGTGAAGAATTGAACACCTATGTCAGAGAATATCCAGTTATAAAAAGTTTTCTCGTGTACTG
 AAGAATAGGGCCTGGCCTACTTTTAAACAGGCCAAATCTAAAACTCCCCACTGCACAGCAGTGATTTCT
 GCCCTACCAACTGCCATGTCAATGTGATGGAAGTTTCTTATCCAAAACATCAACCTCTTTGGGAAGTGC
 ATTTGGTGTTCAGTTGGATAGCAGGAAGCATAAATCTCATGATAAAGAAAAACAACTTCGGAGCAAGGG
 AAAGTGAAGCCTATGGTGTACATTCAGCACACCATCACAACCATGGCGGCCCTTCCAGTCTGTCTCTGG
 GACAGCAGGATGGCCATGGTCTCAGGTATCTGCTAAAAGAAGAAGACTTAGAAACCAAGACATATCA
 GAAACTGCTGGGCAAACTTCAGACTGCAGTGAAGAGGTTGGAGATGTGTGTTTGTCAAATAGATGACCTT
 CTGTCTTCAAATAACATATTCTCCTAAATAGAACGTAAGACATCAGAGGGCATAATACCAACAGACAGTG
 ACAATGAGAAGGGAGAAAAGAAACAGCAAACGGGTATGTTTTAATGTAGCAGGAGATGAACAGGAAGATTC
 TGGTCAAGACCATCAGCAACAGAGACTTACAGTACTGCAACAGCAATAGGAATTCATCGCCTCC
 TTCACCAGCATCTGCAGCAGCCAGTGCAGCTCGTATTTCCACAGTGTGAAATGGACTCAGGTGATGAAC
 TTCCTTAAAGTGTTCGCATATCTCATGATAAACAGGACAAGATACATAGTTGCCTTGAGCATCTTTTCAG
 CCAGGTGGATTCAATTACCAATCTCCTAAAAGGGCAGGCTGTTGTGAGGGCCTTTGACCAAAACAGTAT
 CTCCTCCAGGCCGAGGATTGCAAGAATTTCAACAGGAAATGGAACCAAGCTGAGTTGTCCAAAAGGC
 TACGGCTTCATATCAAGCAAGATCCTTGAATCTTCCAGCAGCGTCCGGACTCTTGCTCAGAACATCAG
 GAAATTTGTTGAAGAGGTAAGTGTAGGCTACTCCTGGCTCTTCTTGAATATTCAGATAGTGAGACACAG
 CTCCGTAGAGACATGGTTTTCTGCCAGACTCTTGTGGCCACTGTCTGTGCCTTCTCTGAGCAGCTCATGG
 CGGCCTTGAACAGATGTTTGACAACAGCAAGGAAAAATGAGATGGAAACTTGGGAAGCCAGCAGGAGGTG
 GCTGGACCAGATAGCGAATGCAGGTGTTCTTTTCACTTTCAGTCACTTCTGTCCACAAACTTGACAGAT
 GAACAAGCCATGTTAGAAGATACACTGGTTGCACTATTTGATTTGGAAAAGGTTTCTTTTACTTTAAAC
 CATCAGAAGAGGAACCTCTGGTTGCAAAATGTTCTTACATATCAAGCAGAAGGAAGTCGGCAAGCTCT
 GAAAGTTTACTTCTACATTGATAGTTATCATTGAACTTCAACGCTGAAAAATGGAGGAGGG
 TTTAAAATTCATCTGTTCTTTTGCACAAGCACTAGAGAGCATGGAAGGATATTATTACAGAGACAATG
 TTTCTGTGGAAGAATTTCAAGCTCAGATAAATGCAGCCTCACTGAAAAGGTCAAACAGTACAACAGAA
 GCTCAGGGCATTCTACTTGGACAAGTCAAATTCACCACCAAACTCCACATCCAAAGCTGCCTATGTAGAT
 AAGCTAATGAGGCCTCTCAACGCTTTGGATGAACTTTACCAGTGGTAGCCTCGTTTATCAGATCCAAGC
 GCACAGCTGCCTGTGCAACACAGCTTGCAGTGTCTTGGGGTTGGACTGCTGTGAGTTTCTCGGAGCT
 GTGCAACAGGCTGGGCGCCTGCCACATCATGTGTCAGCAGCGGTGTGCATCGGTGCACCTGAGCGTG
 ACGCTGGAGCAAGCCATCATTCTGGCCAGAAGCCACGGACTGCCACCTCGTTACATCATGAGGCTACAG
 ATGTGATGCGGAAGCAGGAGCAAGAGTTCAGAACACAGCGAAGAAATTTGGGAGTCAGAGACCGGACTCC
 ACAGTCTGCACCAAGGCTGTACAAGCTGTGCGAGCCACCTCCCCAGCTGGAGAAGAA

ACGCGTACGCGGCCGCTCGAG - GFP Tag - GTTTAA

Protein Sequence: >RG223671 representing NM_024870
 Red=Cloning site Green=Tags(s)

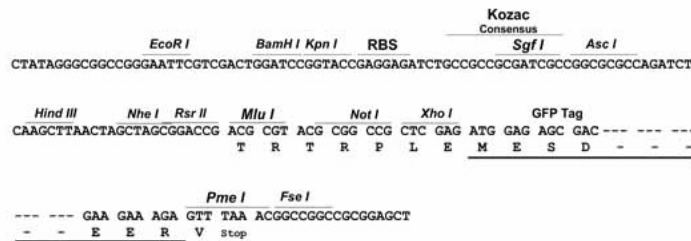
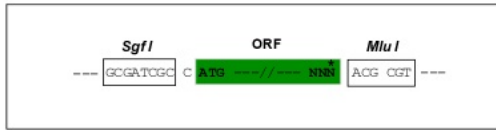
MSEDSRGSRAESAKDLEKQLRLRVCVLSELQKTERDYVGTLEFLVSAFLHRMNQCAASKVDKNVTEETV
 KMLFSNIEDILAVHKEFLKVVEECLHPEPNAQQEVGTCFLHFKDKFRIYDEYCSNHEKAQKLLLELNKIR
 TIRTFLLNCMLLGGKNTDVPLEGYLVTPIQRICKYPLILKELLKRTPRKHSDYAAVMEALQAMKAVCSN
 INEAKRQMEKLEVL EEVQSHIEGWEGSNI TDTCTEMLMCGVLLKISSGNIQERVFFLFDNLLVYCKRKHR
 RLKNSKASTDGHRYLFRGRINTEVMEVENVDDGTADFHSSGHIIVVNGWKIHNTAKNKWFVCMAPTPEEKH
 EWFEAILKERERRKGLKLGMEQDTWVMISEQGEKLYKMMCRQGNLIKDRKRKLTTFPKFCFLGSEFVSWLL
 EIGEIHRPEEGVHLGQALLENGIHHVTDKHQFKPEQMLYRFRYDDGTFYPRNEMQDVISKGVRLYCRLH
 SLFTPVIRDKDYHLRTYKSVVMANKLIDWLIAQGD CRTREEAMIFGVGLCDNGFMHHVLEKSEFKDEPLL
 FRFFSDEEMEGSNMKHRLMKHDLKVVENVIAKSLLIKSNESYGFLEDKNKVP I I K L V E K G S N A E M A G M
 EVGKKIFAINGDLVFMRFNEVDCFLKSCLSNRKPLRVLVSTKPRETVKIPDSADGLGFQIRGFGPSVVH
 AVGRGTAAAAAGLHPGQCIKVNGINVSKETHASVIAHVTACRKYRRPTKQDSIQWVYNSIESAQEDLQK
 SHSKPPGDEAGDAFDCKVEEVIDKFNTMAIIDGKKEHVSLTVDNVHLEYGVVYEDSTAGIKCNVVEKMI
 EPKGFSSLTAKILEALAKSDEHFVQNCTSLNSLNEVIPTDLQSKFSALCSERIEHLQCRISYKQKFSRVL
 KNRAWPTFKQAKSISPLHSSDFCPTNCHVNVMEVSYPKTSTSLGSAFGVQLDSRKHNSHDKENKSSEQG
 KLSPMVIYQHTITTMAAPSGLSLGGQDGHGLRYLLKEEDLETQDIYQKLLGKLTALKEVEMCVCQIDDL
 LSSITYSPKLERKTSEGIPTSDNEKGERNSKRVCFNVAGDEQEDSGHDTISNRDSYSDCNSNRNSIAS
 FTSISSQCSYFHSDEMDSGDDELPLSVRISHDKQDKIHSCL EHLFSQVDSITNLLKGQAVVRAFQDTKY
 LTPGRGLQEFQQEMEPKLSCKRRLRLHIKQDPWNLPSVVRTLAQNIRK FVEEVKCRLLLALLEYSDSETQ
 LRRDMVFCQTLVATVCAFSEQLMAALNQMFDSKENEMETWEASRRWLDQIANAGVLFHFQSLSPNLTD
 EQAMLEDTLVALFDLEKVSFYFKPSEEEPLVANVPLTYQAEGRQALKVYFYIDSYHFEQLPQRLKNGGG
 FKIHPLVLFQALESMEGYYYRDNVSV EEFQAQINAASLEKVKQYNQKLRAFYLDKSNSPPNSTSKAAAYVD
 KLMRPLNALDEL YRLVASFIRSKRTAACANTACSASGVLLSVSSEL CNRLGACHIMCSSGVHRCRLTSV
 TLEQAIILARSHGLPPRYIMQATDVMRQKQARVQNTAKNLGVRDRTPQSAPRLYKLC EPPPPPAGEE

TRTRPLE - GFP Tag - V

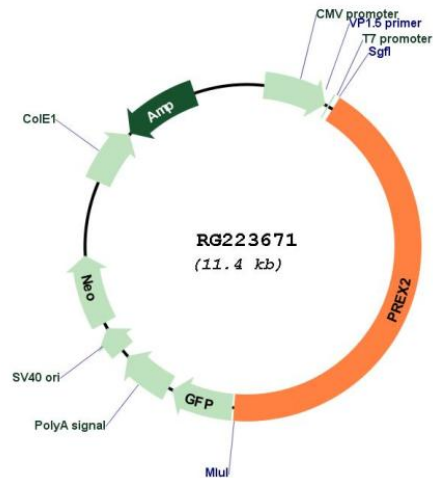
Restriction Sites: SgfI-MluI

Cloning Scheme:

Cloning sites used for ORF Shuttling:



Plasmid Map:



ACCN: NM_024870

ORF Size: 4818 bp

OTI Disclaimer: The molecular sequence of this clone aligns with the gene accession number as a point of reference only. However, individual transcript sequences of the same gene can differ through naturally occurring variations (e.g. polymorphisms), each with its own valid existence. This clone is substantially in agreement with the reference, but a complete review of all prevailing variants is recommended prior to use. [More info](#)

OTI Annotation: This clone was engineered to express the complete ORF with an expression tag. Expression varies depending on the nature of the gene.

Components: The ORF clone is ion-exchange column purified and shipped in a 2D barcoded Matrix tube containing 10ug of transfection-ready, dried plasmid DNA (reconstitute with 100 ul of water).

Reconstitution Method:

1. Centrifuge at 5,000xg for 5min.
2. Carefully open the tube and add 100ul of sterile water to dissolve the DNA.
3. Close the tube and incubate for 10 minutes at room temperature.
4. Briefly vortex the tube and then do a quick spin (less than 5000xg) to concentrate the liquid at the bottom.
5. Store the suspended plasmid at -20°C. The DNA is stable for at least one year from date of shipping when stored at -20°C.

RefSeq: [NM_024870.4](#)

RefSeq Size: 5132 bp

RefSeq ORF: 4821 bp

Locus ID: 80243

UniProt ID: [Q70Z35](#)

Cytogenetics: 8q13.2

Gene Summary: The protein encoded by this gene belongs to the phosphatidylinositol 3,4,5-trisphosphate (PIP3)-dependent Rac exchanger (PREX) family, which are Dbl-type guanine-nucleotide exchange factors for Rac family small G proteins. Structural domains of this protein include the catalytic diffuse B-cell lymphoma homology and pleckstrin homology (DHPH) domain, two disheveled, EGL-10, and pleckstrin homology (DEP) domains, two PDZ domains, and a C-terminal inositol polyphosphate-4 phosphatase (IP4P) domain that is found in one of the isoforms. This protein facilitates the exchange of GDP for GTP on Rac1, allowing the GTP-bound Rac1 to activate downstream effectors. Studies also show that the pleckstrin homology domain of this protein interacts with the phosphatase and tensin homolog (PTEN) gene product to inhibit PTEN phosphatase activity, thus activating the phosphoinositide-3 kinase (PI3K) signaling pathway. Conversely, the PTEN gene product has also been shown to inhibit the GEF activity of this protein. This gene plays a role in insulin-signaling pathways, and either mutations or overexpression of this gene have been observed in some cancers. [provided by RefSeq, Apr 2016]