

## Product datasheet for **RG223660**

### ZNF160 (NM\_198893) Human Tagged ORF Clone

#### Product data:

Product Type:	Expression Plasmids
Product Name:	ZNF160 (NM_198893) Human Tagged ORF Clone
Tag:	TurboGFP
Symbol:	ZNF160
Synonyms:	F11; HKr18; HZF5; KR18
Mammalian Cell Selection:	Neomycin
Vector:	pCMV6-AC-GFP (PS100010)
E. coli Selection:	Ampicillin (100 ug/mL)



[View online »](#)

**ORF Nucleotide Sequence:**

>RG223660 ORF sequence, **codon optimized**.  
**Due to the complexity of NM\_198893, the ORF clone is codon optimized for mammalian Expression.**  
**The nucleotide sequence differs from the reference sequence, yet the amino acid sequence remains identical.**

Red=Cloning site Blue=ORF Green=Tags(s)

TTTTGTAATACGACTCACTATAGGGCGGCCGGAATTCGTCGACTGGATCCGGTACCGAGGAGATCTGCC  
 GCC**CGATCGCC**

ATGGCCCTTACTCAGGTACGGTTGACATTTAGGGATGTGGCCATAGAATTCTCTCAGGAGGAGTGGAAAT  
 GCCTGGACCCTGCTCAGAGGATCTTATACAGGGACGTGATGTTGGAGAACTACTGGAACCTTGTTTCTCT  
 GGGACTGTGTCATTTTGATATGAATATTATCTCCATGTTGGAGGAAGGAAAGAGCCCTGGACTGTGAAG  
 AGCTGTGTGAAAATAGCAAGAAAACCAAGAACCGGGGAATGTGTCAAAGGCGTGGTCACAGATATCCCTC  
 CTAATGTACAATCAAGGATTTGCTACCAAAAGAGAAGAGCAGTACAGAAGCAGTATTCCACACAGTGGT  
 GTTGAAAAGACACGAAAGCCCTGACATTGAAGACTTTTCCTTCAAGGAACCCAGAAAAATGTGCATGAT  
 TTTGAGTGTCAATGGAGAGATGACACAGGAAATTAACAAGGGAGTGCTTATGGCCAGAAAAGGTAATAA  
 GAGATCAACGCGACAGAAGAGACATAGAAAACAAGCTTATGAACAATCAGCTTGGAGTAAGCTTTTCATTC  
 TCATCTGCCTGAAGTGCAGCTATTTCAAGGTGAGGGGAACATGTATGAATGAATCAAGTTGAGAAGTCT  
 ACCAACAAATGGTTCCTCAGTGTCAACACTTCAACAAATTCCTTCTAGTGTCAAACCCACAGGTCTAAAA  
 AATATCATGAACCTAACCATTTTTCATTACTCACACAAAGACGAAAAGCAAACAGTTGTGGAAAACCTTA  
 TAAATGTAATGAATGTGGCAAGGCGTTCCTACTCAGAATTCGAACCTTACAAGTCATAGGAGAATTCATAGT  
 GGAGAGAAGCCTTACAAATGCAGTGCAGTGCAGGCAAAACCTTTACTGTTTCGTTCAAATCTAACTATTCATC  
 AGGTATCCATACTGGAGAAAAACCTTACAAATGTCATGAGTGTGGCAAGGTCTTCAGGCACAATTCATA  
 CCTTGCAACTCATCGGCAATTCATACTGGAGAGAAAACCTTACAAGTGAATGAGTGTGGAAAAGCCTTT  
 AGAGGACATTCAAACCTAACTACCCATCAGTTAATTCATACTGGAGAAAAACCGTTCAAATGTAATGAAT  
 GTGGCAAGCTCTTCACTCAAAATTCACACCTTATAAGTCAATGGAGAAATTCACACTGGAGAGAAACCTTA  
 CAAGTGAATGAGTGCAGCAAGCCTTTAGTGTTCGTTCAAGCCTAGCAATCCATCAGACAATCCACACT  
 GGAGAAAAACCTTACAAATGTAATGAATGTGGCAAGTCTTTAGGTACAATTCATACCTCGGAAGGCATC  
 GGAGAGTTCATACTGGTGAAGAACTTACAAGTGAATGAATGTGGCAAGCCTTCAGTATGCATTCAAA  
 CCTAGCTACCCATCAGGTATCCATACTGGAACAAAACCTTTCAAATGCAATGAATGCAGCAAGGTTTTTC  
 ACTCAAAATTCACAACCTGCAAATCATCGAAGAATTCATACTGGAGAGAAACCTTACAAGTGAATGAGT  
 GTGGGAAAAGCCTTCAGTGTTCGTTCAAGTCTGACTACCCATCAGGCAATCCATTCTGGAGAGAAACCTTA  
 CAAATGTATTGAATGTGGCAAGAGCTTCACTCAAAAATCACACCTTAGAAGTCAATCGGGGAATTCATTCT  
 GGAGAGAAACCTTACAAGTGAATGAATGTGGTAAAGTCTTCGCTCAAACATCACAACTTGAAGGCATT  
 GGAGAGTTCATACTGGAGAAAAACCTTACAAGTGAATGACTGTGGCAGAGCCTTTAGTGATCGTTCAAG  
 CCTAACTTTTCATCAGGCAATACATACTGGAGAGAAAACCTTACAATGTCATGAATGCAGCAAGGTTTTT  
 AGGCACAATTCATACCTTGAACCTCATCGGCGAATTCATACTGGAGAGAAAACCTTACAAGTGAATGAGT  
 GTGGGAAAAGCCTTTAGTATGCATTCAAAACCTAACTACCCATAAGGTTCATCCATACTGGAGAGAAAGCCTTA  
 CAAATGTAATCAATGTGGCAAGGTCTTCACTCAGAACTCACACCTTGCAAATCATCAAAGGACTCACACC  
 GGAGAGAAACCTTACCGATGCAATGAGTGTGGGAAAGCCTTCAGTGTTCGTTCAAGCCTAACCCATC  
 AGGCAATCCATACTGGGAAAAACCTTACAAATGTAATGAATGTGGCAAGGTCTTTACTCAAAATGCTCA  
 CCTGGCAAATCACCGAAGAAATTCATACTGGGAGAAAACCTTACAGGTGTACAGAGTGTGGAAAAGCCTTT  
 AGGGTAAGATCAAGTCTAACTACCCATATGGCAATCCACACTGGAGAAAAGCGTTACAAATGTAATGAGT  
 GTGGCAAGGTCTTCAGGCAGAGTCAAATCTTGAAGTCAATCACAGAATGCATACCGGAGAGAAACCTTA  
 CAAA

**ACGCGT**ACGCGGCCGCTCGAG - GFP Tag - GTTTAA

**Protein Sequence:** >RG223660 representing NM\_198893  
 Red=Cloning site Green=Tags(s)

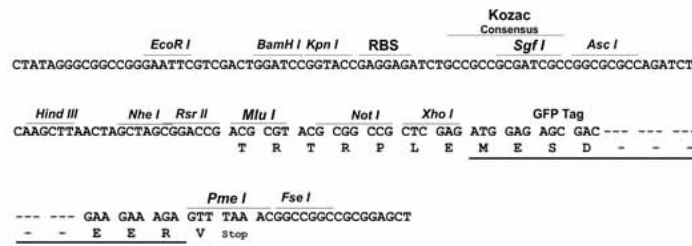
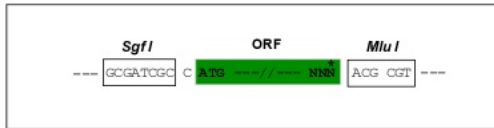
MALTQVRLTFRDVAIEFSQEEWKCLDPAQRILYRDVMLENYWNLVSLGLCHFDMNII SMLEEGKEPWTVK  
 SCVKIARKPRTRECVKGVVTDIPPCKTIKDLLPKEKSSTEAVFHTVVLERHESPDIEDFSFKEPQKNVHD  
 FECQWRDDTGNYKGVLMQAQKEGKRDQRDRRDIEKLMNNQLGVSFHSHLPELQLFQGEKNMYECNQVEKS  
 TNNGSSVSPLQQIPSSVQTHRSKKYHELNF SLLTQRRKANSCGKPYKCNCEGKAF TQNSNLTSHRRIHS  
 GEKPYKCNCEGKFTFVRSNLTIHQVIHTGEKPYKCHECGK VFRHNSYLATHRRIHTGEKPYKCNCEGKAF  
 RGHSNLTTHQLIHTGEKPFKCNCEGK LFTQNSHLI SHWRIHTGEKPYKCNCEGKAF SVRSSLAIHQTIHT  
 GEKPYKCNCEGK VFRYNSYLGRHRRVHTGEKPYKCNCEGKAF SMHSNLATHQVIHTGTPFKCNCEKSVF  
 TQNSQLANHRRIHTGEKPYKCNCEGKAF SVRSSLTTHQAIHSGEKPYKCI ECGKSFTQKSHLRSHRGIHS  
 GEKPYKCNCEGK VFAQTSQ LARHWRVHTGEKPYKCNDCGRAFS DRSSLTFHQAIHTGEKPYKCHECGK V  
 RHNSYLATHRRIHTGEKPYKCNCEGKAF SMHSNL TTHKVIHTGEKPYKCNQCGK VFTQNSHLANHQRTHT  
 GEKPYRCNCEGKAF SVRSSLTTHQAIHTGKKPYKCNCEGK VFTQNAHLANHRRIHTGEKPYRCEGKAF  
 RVRSSLTTHMAIHTGEKRYKCNCEGK VFRQSSNLASHHRMHTGEKPYK

TRTRPLE - GFP Tag - V

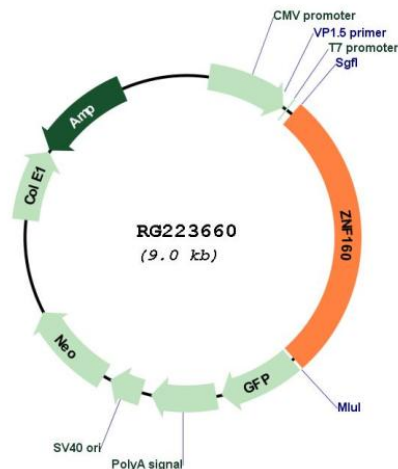
**Restriction Sites:** SgfI-MluI

**Cloning Scheme:**

Cloning sites used for ORF Shuttling:



## Plasmid Map:



**ACCN:** NM\_198893

**ORF Size:** 2454 bp

**OTI Disclaimer:** The molecular sequence of this clone aligns with the gene accession number as a point of reference only. However, individual transcript sequences of the same gene can differ through naturally occurring variations (e.g. polymorphisms), each with its own valid existence. This clone is substantially in agreement with the reference, but a complete review of all prevailing variants is recommended prior to use. [More info](#)

**OTI Annotation:** This clone was engineered to express the complete ORF with an expression tag. Expression varies depending on the nature of the gene.

**Components:** The ORF clone is ion-exchange column purified and shipped in a 2D barcoded Matrix tube containing 10ug of transfection-ready, dried plasmid DNA (reconstitute with 100 ul of water).

**Reconstitution Method:**

1. Centrifuge at 5,000xg for 5min.
2. Carefully open the tube and add 100ul of sterile water to dissolve the DNA.
3. Close the tube and incubate for 10 minutes at room temperature.
4. Briefly vortex the tube and then do a quick spin (less than 5000xg) to concentrate the liquid at the bottom.
5. Store the suspended plasmid at -20°C. The DNA is stable for at least one year from date of shipping when stored at -20°C.

**RefSeq:** [NM\\_198893.1](#), [NP\\_942596.1](#)

**RefSeq Size:** 4304 bp

**RefSeq ORF:** 2457 bp

**Locus ID:** 90338

**UniProt ID:** [Q9HCG1](#)

**Cytogenetics:** 19q13.41-q13.42

**Protein Families:** Transcription Factors

**Gene Summary:** The protein encoded by this gene is a Kruppel-related zinc finger protein which is characterized by the presence of an N-terminal repressor domain, the Kruppel-associated box (KRAB). The KRAB domain is a potent repressor of transcription; thus this protein may function in transcription regulation. Multiple transcript variants have been found for this gene. [provided by RefSeq, Apr 2016]