

Product datasheet for **RG223636**

Lipolysis Stimulated Lipoprotein Receptor (LSR) (NM_015925) Human Tagged ORF Clone

Product data:

Product Type:	Expression Plasmids
Product Name:	Lipolysis Stimulated Lipoprotein Receptor (LSR) (NM_015925) Human Tagged ORF Clone
Tag:	TurboGFP
Symbol:	LSR
Synonyms:	ILDR3; LISCH7
Mammalian Cell Selection:	Neomycin
Vector:	pCMV6-AC-GFP (PS100010)
E. coli Selection:	Ampicillin (100 ug/mL)



[View online »](#)

ORF Nucleotide Sequence:

>RG223636 representing NM_015925
 Red=Cloning site Blue=ORF Green=Tags(s)

TTTTGTAATACGACTCACTATAGGGCGGCCGGGAATTCGTCGACTGGATCCGGTACCGAGGAGATCTGCC
 GCC**GCGATCGCC**

ATGCAACAGGACGGACTTGGAGTAGGGACAAGGAACGGAAGTGGGAAGGGGAGGAGCGTGCACCCCTCT
 GGCTTGGTGCGCGCCGCGCCCTAAGGTAAGTACTTTGGAAGGACGCGCGGCCAGACGCGCCAGACGGC
 CGCGATGGCGCTGTTGGCCGGCGGGCTCTCCAGAGGGCTGGGCTCCACCCGCGCCGCGAGGCCGGAC
 GCGGTCTGTTGCTGTGGCTTCTGCTTAGCACCTGGTGCACAGCTCCTGCCAGGGCCATCCAGGTGACCG
 TGTCCAACCCCTACCACGTGGTATCCTCTCCAGCCTGTGACCTGCCCTGTACCTACCAGATGACCTC
 GACCCCAACGCAACCCATCGTCACTGGAAGTACAAGTCTTTCTGCCGGGACCGCATCGCCGATGCCTTC
 TCCCCGGCAGCGTCGACAACCAGCTCAATGCCAGCTGGCAGCCGGGAACCCAGGCTACAACCCCTACG
 TTGAGTGCCAGGACAGCGTGCACACCGTCAAGGTCGTGGCCACCAAGCAGGGCAACGCTGTGACCTGGG
 AGATTACTACCAGGGCCGGAGGATTACCATCACCGGAAATGCTGACCTGACCTTTGACCAGACGGCGTGG
 GGGGACAGTGGTGTGATTACTGCTCCGTGGTCTCAGCCAGGACCTCCAGGGGAACAATGAGGCCCTACG
 CAGAGCTCATCGTCTTACTGCTGCTTCTCGTGGTGTGGTATGCCTGGCTGCCTTCTCATCTTCTCTCT
 CCTGGGCATCTGCTGGTGCAGTGTGCCCGCACACTTGTGCTGCTACGTGACCTGCCCTGCTGCCCA
 GACAAGTGTGCTGCCCGAGGCCCTGTATGCCCGCGCAAAAGCAGCCACCTCAGGTGTTCCAGCATTT
 ATGCCCCAGCACCTATGCCACCTGTCTCCCGCAAGACCCACCCCAACAGCTATGATTTCCATGGG
 CCCTGCCTACAACGGGTACCCTGGAGGATACCTGGAGACGTTGACAGGAGTAGCTCAGCTGGTGGCCAA
 GGCTCCTATGTAACCCCTGCTTCGGGACACGACAGCAGTGTGGCCTCTGAAGTCCGACGTGGTACAGGA
 TTCAGCCAGCCAGCAGGACGACTCCATCGGGTCTGTACTACATGGAGAAGGAGCTGGCCAACCTCGA
 CCCTTCTCGACCTGGCCCCCAGTGGCCGTGTGGAGCGGCCATGAGTGAAGTACCTCCCTCCACGAG
 GACGACTGGCGATCTCGCCTTCCCGGGCCCTGCCCTCACCCGATCCGGGATGAGGAGTGGGGTGGCC
 ACTCCCCCGGAGTCCCAGGGGATGGGACCAGGAGCCCGCAGGGAGCAGGCAGGCGGGGCTGGCGGGC
 CAGGGCGCCCCGGGCCCTCCGTGGACGCCCTGGACGACCTCACCCCGCGAGCACCGCGAGTCAGGG
 AGCAGGTCTCCACGAGTAAATGGTGGGAGAAGCCGGGCCATATGCCCGCGGAGCCGACGCGGGACG
 ACCTCTATGACCAAGACGACTCGAGGGACTTCCCAGCTCCCGGGACCCCACTACGACGACTTCAGGTC
 TCGGGAGCGCCCTCCTGCCGACCCAGGTCACCACCACCGTACCCGGGACCCCTCGGGACAACGGCTCC
 AGGTCCGGGACCTCCCCTATGATGGGCGGCTACTGGAGGAGGCTGTGAGGAAGAAGGGGTGGAGGAGA
 GGAGGAGACCCCAAGGAGGAGGAGGAAGAGGCTACTACCCGCGCGCCGCCCTACTCGGAGAC
 CGACTCGCAGGCGTCCCGAGAGCGCAGGCTCAAGAAGAATTGGCCCTGAGTCGGGAAAGTTTATGTCGT

ACGCGTACGCGGCCGCTCGAG - GFP Tag - GTTTAA

Protein Sequence:

>RG223636 representing NM_015925
 Red=Cloning site Green=Tags(s)

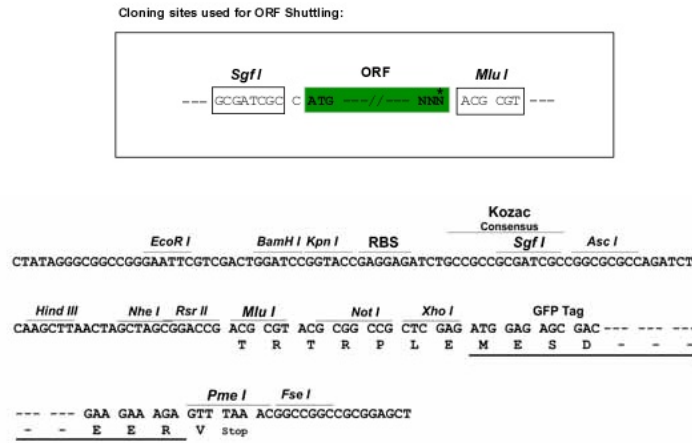
MQQDGLGVGTRNGSGKGRSVHPSWPCAPRPLRYFGRDARARRAQTAAALLAGGLSRGLGSHPAAGR
 AVVFWLLSTWCTAPARA IQVTVSNPYHVILFQPVTL PCTYQMTSTPTQPIVIWKYSFCRDRIDAF
 SPASVDNQLNAQLAAGNPGYNPYVEQCDSVRTVRVATKQNAVTLGDYYQRRITITGNADLTFDQTAW
 GDSGVYYCSVSAQDLQGNNEAYAEILVLDWLFVVVCLAAFLIFLLLGICWCQCCPHTCCCYVRCPCP
 DKCCPEALYAAGKAATSGVPSIYAPSTYAHLSPAKTPPPAMPMPGAYNGYPGYVDRSSSAGGQ
 GSYVPLLRDTSVASEVRSYRIQASQDDSMRVL YMEKELANFDPSRPGPPSGRVERAMSEVSLHE
 DDWRSRPSRGPALTPIRDEEWGGHSPRSPRGWDQEPAREQAGGWRARRPRARSVDALDDLTPPSTAESG
 SRPTSNGGRSRA YMPRSRDL YDQDSRDFPRSRPHYDDFRSREPPADPRSHHRTDPRDNGS
 RSGDLPYDGRLLLEAVRKKGSEERRRPHKEEEEEAYPPAPPYSETDSQASRERLKKNLALSRESLVV

TRTRPLE - GFP Tag - V

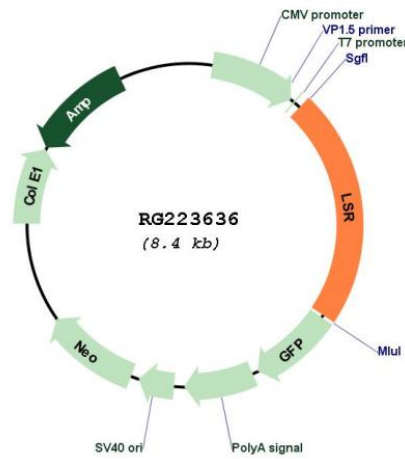
Restriction Sites:

SgfI-MluI

Cloning Scheme:



Plasmid Map:



ACCN: NM_015925
 ORF Size: 1890 bp

OTI Disclaimer:	The molecular sequence of this clone aligns with the gene accession number as a point of reference only. However, individual transcript sequences of the same gene can differ through naturally occurring variations (e.g. polymorphisms), each with its own valid existence. This clone is substantially in agreement with the reference, but a complete review of all prevailing variants is recommended prior to use. More info
OTI Annotation:	This clone was engineered to express the complete ORF with an expression tag. Expression varies depending on the nature of the gene.
Components:	The ORF clone is ion-exchange column purified and shipped in a 2D barcoded Matrix tube containing 10ug of transfection-ready, dried plasmid DNA (reconstitute with 100 ul of water).
Reconstitution Method:	<ol style="list-style-type: none"> 1. Centrifuge at 5,000xg for 5min. 2. Carefully open the tube and add 100ul of sterile water to dissolve the DNA. 3. Close the tube and incubate for 10 minutes at room temperature. 4. Briefly vortex the tube and then do a quick spin (less than 5000xg) to concentrate the liquid at the bottom. 5. Store the suspended plasmid at -20°C. The DNA is stable for at least one year from date of shipping when stored at -20°C.
RefSeq:	NM_015925.6 , NP_057009.3
RefSeq Size:	2228 bp
RefSeq ORF:	1749 bp
Locus ID:	51599
UniProt ID:	Q86X29
Cytogenetics:	19q13.12
Domains:	IG
Protein Families:	Druggable Genome, Transcription Factors, Transmembrane
Gene Summary:	Probable role in the clearance of triglyceride-rich lipoprotein from blood. Binds chylomicrons, LDL and VLDL in presence of free fatty acids and allows their subsequent uptake in the cells (By similarity).[UniProtKB/Swiss-Prot Function]