

## Product datasheet for **RG223590**

### Signal peptide peptidase like 2B (SPPL2B) (NM\_152988) Human Tagged ORF Clone

#### Product data:

Product Type:	Expression Plasmids
Product Name:	Signal peptide peptidase like 2B (SPPL2B) (NM_152988) Human Tagged ORF Clone
Tag:	TurboGFP
Symbol:	Signal peptide peptidase like 2B
Synonyms:	IMP-4; IMP4; PSH4; PSL1
Mammalian Cell Selection:	Neomycin
Vector:	pCMV6-AC-GFP (PS100010)
E. coli Selection:	Ampicillin (100 ug/mL)



[View online »](#)

**ORF Nucleotide Sequence:**

>RG223590 representing NM\_152988  
 Red=Cloning site Blue=ORF Green=Tags(s)

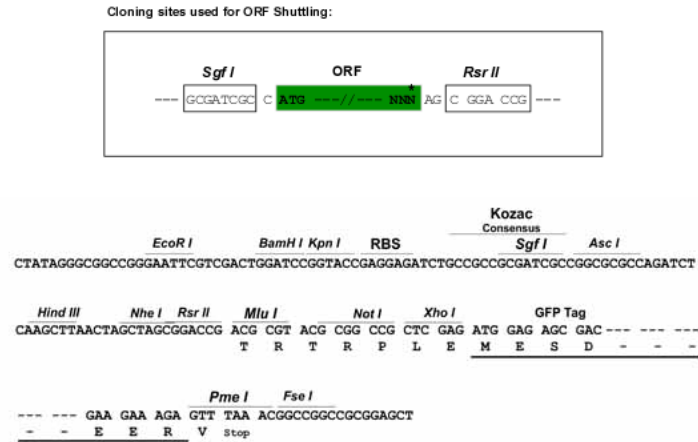
TTTTGTAATACGACTCACTATAGGGCGGCCGGGAATTCGTCGACTGGATCCGGTACCGAGGAGATCTGCC  
 GCC**CGGATCGCC**

ATGGCGGCAGCGGTGGCGGCTGCGCTGGCGCGGCTTTTGGCGGCCTTTCTGCTCCTCGCGGCCAGGTGG  
 CCTGTGAGTACGGCATGGTGCACGTGGTCTCCAGGCCGGGGGCCCGAAGGCAAAGACTACTGCATCCT  
 CTACAACCCGAGTGGGCCATCTTCCGCACGACCTCAGCAAGGCATCTTTCCTGCAGCTGCGCAACTGG  
 ACGGCCTCCCTGCTCTGCTCCGCAGCCGACCTCCCGCCCGTGGCTTCAGCAACCAGATCCCGCTGGTGG  
 CGCGGGGAACTGCACCTTCTATGAGAAAGTGAGGCTGGCCAGGGCAGCGGAGCACGCGGGCTGCTCAT  
 CGTCAGCAGGGAGAGGCTGGTCCCCCGGGGGTAATAAGACGCAGTATGATGAGATTGGCATTCCCGTG  
 GCCCTGCTCAGCTACAAAGACATGCTGGACATCTTACGCGTTTCGGCCGCACGGTGAAGGCGGCGCTGT  
 ATGCGCCTAAGGAGCCGGTGGTGGACTACAACATGGTCATCATCTTCATCATGGCTGTGGGCACCGTCGC  
 CATCGCGGCTACTGGGCGGGAGTCGGGACGTGAAGAAAAGGTACATGAAGACAAGCGCGACGATGGG  
 CCCGAGAAGCAGGAGGACGAGGCGGTGGACGTGACGCGGTGATGACCTGCGTGTGTGGTGTGTGCT  
 GCTCCATGCTGGTGTGCTCTACTACTTCTACGACCTCCTCGTGTACGTGGTATCGGGATCTTCTGCC  
 GGCTCCGCCACCGGCTCTACAGCTGCCTGGCGCCTGTGTGCGGCGGCTGCCCTTCGCAAGTGCAGG  
 ATCCCCAACACAGCCTGCCCTACTTCCACAAGCGCCCGCAGGCCGATGCTGCTCCTGGCGCTTCT  
 GCGTGGCCGTACGCGTGGTGTGGGGCTTCCGCAACGAGGACAGTGGGCTGGGCTCCAGGATGC  
 CCTGGGCATCGCCTTCTGCCTCTACATGCTGAAGACATCCGCTGCCCCACCTTCAAGGCCTGCACGCTG  
 CTGCTGCTGGTGTGCTTCTCTACGACATCTTCTCGTGTTCATCACGCCCTTCTGACCAAGAGTGGGA  
 GCAGCATCATGGTGGAGGTGGCCACTGGGCCCTCGGACTCAGCCACCCGTGAGAAGTGGCCATGGTCTT  
 GAAGGTGCCAGGCTGAACCTCTCACCTTGGCCCTGTGTGACCGGCCCTTCTCCCTCCTGGGTTTCGGA  
 GACATTTTGGTGGCAGGGCTGCTGGTGGCTACTGCCACAGGTTTGACATCCAGGTACAGTCTCCAGGG  
 TATACTTCGTGGCTGCACCATCGCCTATGGCGTTGGCCTCCTTGTGACATTCGTGGCACTGGCCCTGAT  
 GCAGCGTGGCCAGCCGCTCTCCTCTACCTGGTGGCCTGCACGCTGGTACGAGCTGCGCTGTGGCGCTC  
 TGGCGCCGGGAGCTGGGCGTGTCTGGACGGGAGCGGCTTTCGAAAAGTCTACCTCCATCTCCGTGGG  
 CCCCAGCACCAGCCGACGGCCCGCAGCCTCCCAAAGACTCTGCCACGCCACTCTCCCGCAGCCGCCAG  
 CGAAGAACCAGCCACATCCCCCTGGCCTGCTGAGCAGTCCCCAAAATCACGCACGTCCGAGGAGATGGGG  
 GCTGGAGCCCCATGCGGGAGCCTGGGAGCCAGCTGAATCCGAGGGCCGGGACCAGGCCAGCCGTCCC  
 CGGTAACCCAGCCTGGCGCTCGGCC

AG**CGGACCG**ACGCGT**ACGCGGCCGCTCGAG** - GFP Tag - GTTTAA

**Restriction Sites:**

Sgfl-RsrII

**Cloning Scheme:**


**ACCN:** NM\_152988

**ORF Size:** 1776 bp

**OTI Disclaimer:** The molecular sequence of this clone aligns with the gene accession number as a point of reference only. However, individual transcript sequences of the same gene can differ through naturally occurring variations (e.g. polymorphisms), each with its own valid existence. This clone is substantially in agreement with the reference, but a complete review of all prevailing variants is recommended prior to use. [More info](#)

**OTI Annotation:** This clone was engineered to express the complete ORF with an expression tag. Expression varies depending on the nature of the gene.

**Components:** The ORF clone is ion-exchange column purified and shipped in a 2D barcoded Matrix tube containing 10ug of transfection-ready, dried plasmid DNA (reconstitute with 100 ul of water).

**Reconstitution Method:**

1. Centrifuge at 5,000xg for 5min.
2. Carefully open the tube and add 100ul of sterile water to dissolve the DNA.
3. Close the tube and incubate for 10 minutes at room temperature.
4. Briefly vortex the tube and then do a quick spin (less than 5000xg) to concentrate the liquid at the bottom.
5. Store the suspended plasmid at -20°C. The DNA is stable for at least one year from date of shipping when stored at -20°C.

**RefSeq:** [NM\\_152988.1](#), [NP\\_694533.1](#)

**RefSeq Size:** 2557 bp

**RefSeq ORF:** 1779 bp

**Locus ID:** 56928

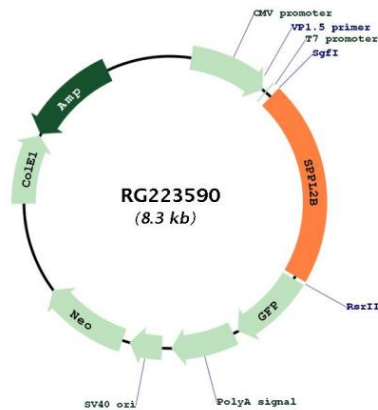
**UniProt ID:** [Q8TCT7](#)

**Cytogenetics:** 19p13.3

**Protein Families:** Protease, Transmembrane

**Gene Summary:** This gene encodes a member of the GXGD family of aspartic proteases. The GXGD proteases are transmembrane proteins with two conserved catalytic motifs localized within the membrane-spanning regions. This enzyme localizes to endosomes, lysosomes, and the plasma membrane. It cleaves the transmembrane domain of tumor necrosis factor alpha to release the intracellular domain, which triggers cytokine expression in the innate and adaptive immunity pathways. Multiple transcript variants encoding different isoforms have been found for this gene. [provided by RefSeq, Jul 2008]

**Product images:**



Circular map for RG223590