

Product datasheet for **RG223518**

PTPN20A (NM_001042395) Human Tagged ORF Clone

Product data:

| | |
|---------------------------|--|
| Product Type: | Expression Plasmids |
| Product Name: | PTPN20A (NM_001042395) Human Tagged ORF Clone |
| Tag: | TurboGFP |
| Symbol: | PTPN20A |
| Synonyms: | bA142117.1; CT126; hPTPN20; PTPN20B |
| Mammalian Cell Selection: | Neomycin |
| Vector: | pCMV6-AC-GFP (PS100010) |
| E. coli Selection: | Ampicillin (100 ug/mL) |
| ORF Nucleotide Sequence: | >RG223518 representing NM_001042395 Red=Cloning site Blue=ORF Green=Tags(s) |

TTTTGTAATACGACTCACTATAGGGCGGCCGGAATTCGTCGACTGGATCCGGTACCGAGGAGATCTGCC
GCC**CGATCGCC**

ATGTGGACAGCCAGAGGCCCTTCAGAAGAGACAGGTGGAGCAGTGAGGATGAGGAGGCTGCAGGGCCAT
CACAGGCTCTCTCCCTCTACTTTCTGATACGCGCAAAATTGTTTCTGAAGGAGAACTAGATCAGTTGGC
TCAGATTCGGCCATTAATATTCAATTTTCATGAGCAGACAGCCATCAAGGATTGTTTAAAAATCCTTGAG
GAAAAACAGCAGCGTATGATATCATGCAGGAATTTATGGCTTTAGAACTTAAGAATCTGCCTGGTGA
TCAACTCTGGGAATCAACCAAGCAACAGAGAAAAACAGATACCGAGATATTCTCCATATGATTCAAC
ACGCGTTCCTCTTGGAAAAAGCAAGGACTACATCAATGCTAGTTATATTAGAATAGTCAATTGTGGAGAA
GAGTATTTTTATATCGCTACTCAAGGACCACTGCTGAGCACCATAGATGACTTTTGGCAAATGGTGTGG
AAAATAATTCAAATGTTATTGCCATGATAACCAGAGAGATAGAAGGTGGAATTATCAAATGCTACCATTA
CTGGCCATTTCTCTGAAGAAGCCATTGGAATTGAAACACTTCCGTGATTCTGGGAACTACCAGATA
CTTCAATATTTTCATCATTGCAATGTTTCAAGTTGTGGAGAAGTCCACGGAACTAGTCACTCTGTAAAC
AGTTGCAGTTCACCAAGTGGCCAGACCATGGCACTCCTGCCTCAGCAGATAGCTTCATAAAAATATATTCC
TTATGCAAGGAAGAGCCACCTTACAGGACCCATGGTTGTTCACTGCAGTGCCGGCATAGGCCGGACAGGG
GTGTTCCATGTGTGGATGTCGTGTTCTGTGCCATCGTAAAGAACTGTTCAATCAACATCATGGATATAG
TGGCCAAATGAGAGAACAACGTTCTGGCATGGTTCAAACGAAGGAGCAGTATCACTTTTGTACGATAT
TGTGCTTGAAGTTCTTCGAAACTTCTGACTTTGGAT

AG**CGGACCG**ACGCGTACGCGGCCGCTCGAG - GFP Tag - GTTTAA



[View online »](#)

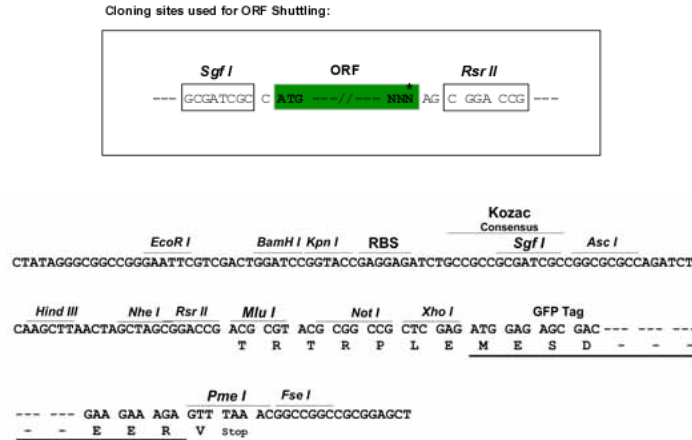
Protein Sequence: >RG223518 representing NM_001042395
Red=Cloning site Green=Tags(s)

MWTARGPFRDRWSEDEEAAGPSQALSPLLSDTRKIVSEGELDQLAQIRPLIFNFHEQTAIKDCLKILE
 EKTAAYDIMQEFMALELKNLPGEFNSGNQPSNREKNRYRDILPYDSTRVPLGKSKDYINASYIRIVNCGE
 EYFYIATQGPLLSTIDDFWQMVLENNNSVIAMITREIEGGIICKYHYWPI SLKKPLELKHFRVFLINYQI
 LQYFIIIRMFQVVEKSTGTSHSVKQLQFTKWPDHGTPASADSF IKYIRYARKSHLTGPMVVHCSAGIGRTG
 VFLCVDVVFCAIVKNCSFNIMDIVAQMREQRSGMVQTKEQYHFCDIVLVLRLKLLTLD

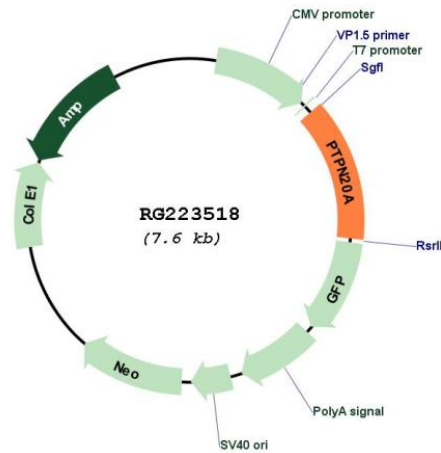
SGPTRRRLE - GFP Tag - V

Restriction Sites: SgfI-RsrII

Cloning Scheme:



Plasmid Map:



ACCN: NM_001042395

ORF Size: 1017 bp

| | |
|-------------------------------|---|
| OTI Disclaimer: | The molecular sequence of this clone aligns with the gene accession number as a point of reference only. However, individual transcript sequences of the same gene can differ through naturally occurring variations (e.g. polymorphisms), each with its own valid existence. This clone is substantially in agreement with the reference, but a complete review of all prevailing variants is recommended prior to use. More info |
| OTI Annotation: | This clone was engineered to express the complete ORF with an expression tag. Expression varies depending on the nature of the gene. |
| Components: | The ORF clone is ion-exchange column purified and shipped in a 2D barcoded Matrix tube containing 10ug of transfection-ready, dried plasmid DNA (reconstitute with 100 ul of water). |
| Reconstitution Method: | <ol style="list-style-type: none">1. Centrifuge at 5,000xg for 5min.2. Carefully open the tube and add 100ul of sterile water to dissolve the DNA.3. Close the tube and incubate for 10 minutes at room temperature.4. Briefly vortex the tube and then do a quick spin (less than 5000xg) to concentrate the liquid at the bottom.5. Store the suspended plasmid at -20°C. The DNA is stable for at least one year from date of shipping when stored at -20°C. |
| RefSeq: | NM_001042395.1 , NP_001035854.1 |
| RefSeq Size: | 2872 bp |
| RefSeq ORF: | 1019 bp |
| Locus ID: | 653129 |
| Cytogenetics: | 10q11.22 |
| Protein Families: | Druggable Genome |
| Gene Summary: | The product of this gene belongs to the family of classical tyrosine-specific protein tyrosine phosphatases. Many protein tyrosine phosphatases have been shown to regulate fundamental cellular processes and several are mutated in human diseases. Chromosome 10q contains a segmental duplication resulting in multiple copies of the protein tyrosine phosphatase, non-receptor type 20 gene. The two nearly identical copies are designated as PTPN20A and PTPN20B. A third copy is only partially duplicated and contains a pseudogene, designated as PTPN20C. This gene encodes the more centromeric copy, PTPN20A. Multiple alternatively spliced transcript variants encoding different isoforms have been identified. [provided by RefSeq, Jul 2008] |