

Product datasheet for **RG223510**

Eph receptor A6 (EPHA6) (NM_001080448) Human Tagged ORF Clone

Product data:

Product Type:	Expression Plasmids
Product Name:	Eph receptor A6 (EPHA6) (NM_001080448) Human Tagged ORF Clone
Tag:	TurboGFP
Symbol:	Eph receptor A6
Synonyms:	EHK-2; EHK2; EK12; EPA6; HEK12; PRO57066
Mammalian Cell Selection:	Neomycin
Vector:	pCMV6-AC-GFP (PS100010)
E. coli Selection:	Ampicillin (100 ug/mL)
ORF Nucleotide Sequence:	>RG223510 representing NM_001080448 Red=Cloning site Blue=ORF Green=Tags(s)

TTTTGTAATACGACTCACTATAGGGCGGCCGGAATTCGTCGACTGGATCCGGTACCGAGGAGATCTGCC
GCC**CGATCGCC**

ATGCAATCCCCTCGCTCCAGCCGCGAGGAGCTCCCCGGCGCCGAGGCAGCGTCTCTCCGAAGCAG
CTGCACCTGCAACTGGGCAGCCTGGACCCTCGTGCCCTGTTCCCGGACCTCGCGCAGGGGGCGCCCCG
GACACCCCTGCGGGCCGGTGGAGGAGGAAGAGGAGGAGGAAGAAGACGTGGACAAGGACCCCAT
CCTACCCAGAACCTGCCTGCGCTGCCCCACTTCTCTTAAGGGAGAGAAAAGAGAGCTAGGAGAA
CCATGGGGGGCTGCGAAGTCCGGGAATTTCTTTTGCAATTTGGTTTCTTCTTGCCTCTGCTGACAGCGT
GCCAGGCGACTGCAGTCAGTCTCCAACAACCAAGTTGTGTGCTTGATACAACAACCTGACTGGGAGAG
CTAGGATGGAAAACATATCCATTAATGGTGGGATGCCATCACTGAAATGGATGAACATAATAGGCCCA
TTCACACATACCAGGTATGTAATGTAATGGAACCAAAACAAAACAACTGGCTTCGTACAACTGGATCTC
CCGTGATGCAGCTCAGAAAATTTATGTGGAAATGAAATTCACACTAAGGGATTGTAAACAGCATCCCATGG
GTCTTGGGGACTTGCAAGAAACATTTAATCTGTTTTATGGAATCAGATGAGTCCCACGGAAATTAAT
TCAAGCCAAACAGTATACAAAGATCGACACAATTGCTGCTGATGAGAGTTTTACCCAGATGGATTTGG
TGATCGCATCCTCAAACCTCAACTGAAATTCGTGAGGTGGGGCCTATAGAAAGGAAAGGATTTTATCTG
GCTTTTCAAGACATTGGGGCGTGCATTGCCCTGGTTTCAGTCCGTGTTTTCTACAAGAAATGCCCTTCA
CTGTTTCGTAACCTTGCCATGTTTCTGATACCATTCCAAGGTTGATTCCCTCCTCTTTGGTTGAAGTACG
GGTTCTGTGTGAAGAGTGCTGAAGAGCGTGACTCCTAAACTGTATTGTGGAGCTGATGGAGATTGG
CTGGTTCTCTTGAAGGTGCATCTGCAGTACAGGATATGAAGAAATGAGGGTTCTTGCCATGCTTGCA
GACCAGGATTCTATAAGCTTTTCTGTTGGAAACACAAAATGTTCTAAATGCTCCACACAGTTTAACATA
CATGGAAGCAACTTCTGTCTGTGAGTGTGAAAAGGGTTATTTCCGAGCTGAAAAAGACCCACCTTCTATG
GCATGTACCAGGCCACCTCAGCTCCTAGGAATGTGGTTTTAACATCAATGAAACAGCCCTTATTTTGG
AATGGAGCCCAAGTGACACAGGAGGAGAAAAGATCTCACATACAGTGAATCTGTAAGAAATGTGG
CTTAGACACCAGCAGTGTGAGGACTGTGGTGGAGGACTCCGCTTCATCCAAGACATACAGGCCTGATC



[View online >](#)

AACAATCCGTGATAGTACTTGGCTTTGTGTCTCACGTGAATTACACCTTTGAAATAGAAGCAATGAATG
 GAGTTTCTGAGTTGAGTTTTCTCCAAGCCATTACAGCTATTACAGTGACCACGGATCAAGATGCACC
 TTCCCTGATAGGTGTGGTAAGGAAGGACTGGGCATCCCAAAATAGCATTGCCCTATCATGGCAAGCACCT
 GCTTTTTCCAATGGAGCCATTCTGGACTACGAGATCAAGTACTATGAGAAAAGACATGAGCAGCTGACCT
 ACTCTTCCACAAGGTCCAAGCCCCAGTGTATCATCACAGGTCTTAAGCCAGCCACCAATATGTATT
 TCACATCCGAGTGAGAAGTGGCAGCAGGATACAGTGGCTACAGTCAGAAAATTTGAATTTGAAACAGGAGAT
 GAAACTTCTGACATGGCAGCAGAACAAGGACAGATTCTCGTGATAGCCACCGCGCTGTTGGCGGATTCA
 CTCTCCTCGTCATCCTCACTTTTCTTCTTGATCACTGGGAGATGTCAGTGGTACATAAAAAGCCAAGAT
 GAAGTCAGAAGAGAAGAGAAGAAACCACTTACAGAATGGGCATTTGCGCTTCCCGGGAATTTAAACTTAC
 ATTGATCCAGATACATATGAAGACCCATCCCTAGCAGTCCATGAATTTGCAAAGGAGATTGATCCCTCAA
 GAATTCGTATTGAGAGAGTCATTGGGCGAGTGAATTTGGAGAAGTCTGTAGTGGCGTTTGAAGACACC
 AGGGAAAAGAGAGATCCCAGTTGCCATTTAAACTTTGAAAGGTGGCCACATGGATCGGCAAAGAAGAGAT
 TTTCTAAGAGAAGCTAGTATCATGGCCAGTTTGACCATCCAAACATCATTCCCTAGAAGGGTGTGCA
 CAAAAGATCCTTCCCGCCATTGGGGTGGAGGCGTTTGCCTCAGCTTCTGAGGGCAGGGTTTTTAA
 TAGCATCCAGGCCCGCATCCAGTGCCAGGGGAGGATCTTGCCTCAGGATTCTGCTGGCAGACCA
 GTAATGATTGTGGTGAATATATGGAGAATGGATCCCTAGACTCCTTTTTGCGGAAGCATGATGGCCACT
 TCACAGTCATCCAGTTGGTTCGGAATGCTCCGAGGCATTGCATCAGGCATGAAGTATCTTTCTGATATGGG
 TTATGTTTCATCGAGACCTAGCGGCTCGGAATATACTGGTCAATAGCAACTTAGTATGCAAAGTTTCTGAT
 TTTGGTCTCTCCAGAGTCTGGAAGATGATCCAGAAGCTGCTTATAACAACACTGGTGGAAAAATCCCCA
 TAAGGTGGACAGCCCCAGAAGCCATCGCTACAGAAAATCTCCTCAGCAAGCGATGCATGGAGCTATGG
 CATTGTGCATGTGGGAGGTGATGCTTATGGAGAGAGACCTTATTGGGAAATGTCTAACCAAGATGCATT
 CTGTCCATTGAAGAAGGTACAGACTCCAGCTCCCATGGGCTGCCAGCATCTTACACCAGCTGATGC
 TCCACTGCTGGCAGAAGGAGAGAAAATCACAGACCAAAAATTTACTGACATTGTCAGCTTCTTACAAACT
 GATCCGAAATCCCAGTGCCTTACACCCCTGGTGGAGGACATCCTTGAATGCCAGAGTCCCTGGTGAA
 GTTCCGGAATATCCTTTGTTGTACAGTTGGTACTGGCTAGATTCTATAAAGATGGGGCAATACAAGA
 ATAACCTCGTGGCAGCAGGGTTTACAACATTTGACCTGATTTCAAGAATGAGCATTGATGACATTAGAAG
 AATTGGAGTCATACTTATTGGACACCAGAGACGAATAGTCAGCAGCATACAGACTTTACGTTTACACATG
 ATGCACATACAGGAGAAGGGATTTTCATGTA

ACGCGTACGCGGCCGCTCGAG - GFP Tag - GTTTAA

Protein Sequence:

>RG223510 representing NM_001080448
 Red=Cloning site Green=Tags(s)

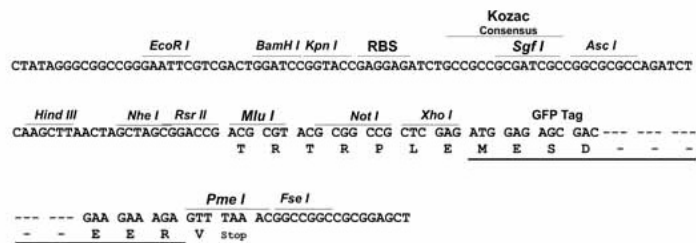
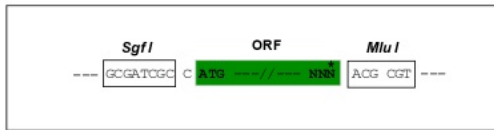
MQFPSPPAARSSPAPQAASSSEAAAPATGQPGPSCPVPPTSRGRPGTPPAGRVEEEEEEEEEDVDKDPH
 PTQNTCLRCRHFSLRERKREPRRTMGGCEVREFLLQFGFLLPLLTAWPGDCSHVSNQVLLDTTTTVLGE
 LGWKTYPLNGWDAITEMDEHNRPIHTYQVCNMEPNQNNWLRNWI SRDAAQKIYVEMKFLTRDCNSIPW
 VLGTCKETFNLFYMESESHGKIFKPNQYTKIDTIAADESFTQMDLGDRILKLNTEIREVGP IERKGFYL
 AFQDIGACIALVSVRVFYKPCPFTVRNLAMFPDTIPRVDSSSLVEVRGSCVKS AEERDTPKLYCGADGDW
 LVPLGRICSTGYEEIEGSCHACRPGFYKAFAGNTKCSKPPHSLTYMEATSVCQCEKGYFRAEKDPPSM
 ACTRPPSAPRNVFNINETALILEWSPSDTGGKDLTYSVICKKCLDTSQCEDCGGLRFIPRHGLI
 NNSVIVLDFVSHVNYTFEIEAMNGVSELFSFKPFTAITVTTDQDAPSLIGVVRKDWASQNSIALSWQAP
 AFSNGAILDYEIKYYEKEHEQLTYSSTRSKAPSVIITGLKPKATKYVFHIRVRTATGYSYSGKFEFETGD
 ETSDMAEQGQILVIATAAVGGFTLLVILTLFFLITGRCQWYIKAKMKSEEKRRNLQNGHLRFPGIKTY
 IDPDTYEDPSLAVHEFAKEIDPSRIRIERVIGAGEFGEVCSGRLKTPGKREIPVAIKTLKGGHMDRQRD
 FLREASIMGQFDHPNIIIRLEGVVTKRSPFAIGVEAFCSFLRAGFLNSIQAPHPVPGGSLPPRIPAGRP
 VMIVVEYMEINGSLDSFLRKHDGHFTVIQLVGMRLGIASGMKYLSDMGYVHRDLAARNILVNSNLVCKVSD
 FGLSRVLEDDPEAAYTTTGGKIPIRWTAPEAIA YRKFSASDAWSYGIWMWEVMSYGERPYWEMSQDVI
 LSIEEGYRLPAPMGCPASLHQLMLHCWQKERNHRPKFTDIVSFLDKLIRNPSALHTLVEDILVMPESGPE
 VPEYPLFVTVDWLD SIKMGQYKNFVAAGFTTFDLISRMSIDD IRRIGVILIGHQRRIVSSIQTLRLHM
 MHIQEKGFHV

TRTRPLE - GFP Tag - V

Restriction Sites: SgfI-MluI

Cloning Scheme:

Cloning sites used for ORF Shuttling:

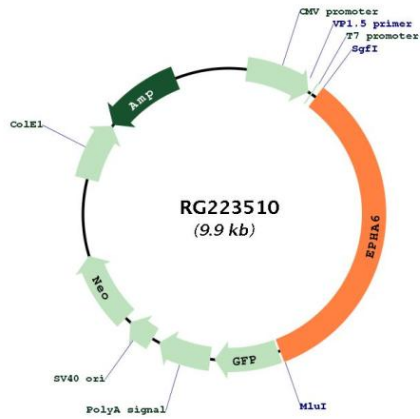


ACCN: NM_001080448

ORF Size: 3390 bp

OTI Disclaimer:	<p>Due to the inherent nature of this plasmid, standard methods to replicate additional amounts of DNA in E. coli are highly likely to result in mutations and/or rearrangements. Therefore, OriGene does not guarantee the capability to replicate this plasmid DNA. Additional amounts of DNA can be purchased from OriGene with batch-specific, full-sequence verification at a reduced cost. Please contact our customer care team at custsupport@origene.com or by calling 301.340.3188 option 3 for pricing and delivery.</p> <p>The molecular sequence of this clone aligns with the gene accession number as a point of reference only. However, individual transcript sequences of the same gene can differ through naturally occurring variations (e.g. polymorphisms), each with its own valid existence. This clone is substantially in agreement with the reference, but a complete review of all prevailing variants is recommended prior to use. More info</p>
OTI Annotation:	This clone was engineered to express the complete ORF with an expression tag. Expression varies depending on the nature of the gene.
Components:	The ORF clone is ion-exchange column purified and shipped in a 2D barcoded Matrix tube containing 10ug of transfection-ready, dried plasmid DNA (reconstitute with 100 ul of water).
Reconstitution Method:	<ol style="list-style-type: none"> 1. Centrifuge at 5,000xg for 5min. 2. Carefully open the tube and add 100ul of sterile water to dissolve the DNA. 3. Close the tube and incubate for 10 minutes at room temperature. 4. Briefly vortex the tube and then do a quick spin (less than 5000xg) to concentrate the liquid at the bottom. 5. Store the suspended plasmid at -20°C. The DNA is stable for at least one year from date of shipping when stored at -20°C.
RefSeq:	NM_001080448.3
RefSeq Size:	3677 bp
RefSeq ORF:	3393 bp
Locus ID:	285220
Cytogenetics:	3q11.2
Protein Families:	Druggable Genome, Protein Kinase, Transmembrane
Protein Pathways:	Axon guidance
Gene Summary:	Receptor tyrosine kinase which binds promiscuously GPI-anchored ephrin-A family ligands residing on adjacent cells, leading to contact-dependent bidirectional signaling into neighboring cells. The signaling pathway downstream of the receptor is referred to as forward signaling while the signaling pathway downstream of the ephrin ligand is referred to as reverse signaling (By similarity).[UniProtKB/Swiss-Prot Function]

Product images:



Circular map for RG223510