

Product datasheet for **RG223504**

Methyltransferase like 6 (METTL6) (NM_152396) Human Tagged ORF Clone

Product data:

Product Type:	Expression Plasmids
Product Name:	Methyltransferase like 6 (METTL6) (NM_152396) Human Tagged ORF Clone
Tag:	TurboGFP
Symbol:	METTL6
Mammalian Cell Selection:	Neomycin
Vector:	pCMV6-AC-GFP (PS100010)
E. coli Selection:	Ampicillin (100 ug/mL)
ORF Nucleotide Sequence:	>RG223504 representing NM_152396 Red=Cloning site Blue=ORF Green=Tags(s)

TTTTGTAATACGACTCACTATAGGGCGGCCGGAATTCGTCGACTGGATCCGGTACCGAGGAGATCTGCC
GCC**CGATCGCC**

ATGGCTTCTTTGCAAAGGAAAGGGCTGCAGGCAAGGATTCTCACCTCTGAAGAAGAGGAGAACTGAAAA
GAGACCAAACCTTTGGTGTCTGATTTTAAACAGCAGAAATTGGAACAAGAGGCTCAGAAAAATTGGGATCT
TTTTTACAAAAGAAATAGCACTAATTTCTTCAAAGACAGACACTGGACCACCAGAGAGTTTGAGGAGCTA
AGATCATGTAGAGAGTTGAAGATCAAAGTTAACAATGCTTGAAGCTGGCTGTGGGTTGGAAACTGTT
TATCCCACTTTTAGAAGAAGATCCGAATATCTTTGCCTATGCCGTGATTTTTCTCCAAGAGCCATTGA
ATATGTTAAGCAAATCCTTTATATGATACAGAAAGATGCAAGGTATTCCAGTGTGATCTGACTAAAGAT
GATCTTCTGGATCATGTACCGCCAGAGTCTGTGGATGTTGTTATGTTGATATTTGTGCTGTCAGCTGTT
ATCCTGATAAGATGCACCTTGTCTTACAAAACATTTACAAGGTATTAACCAGGCAAAAGTGTCTTGT
TCGTGACTACGGACTGTATGATCATGCCATGCTTAGGTTTAAAGCCAGCAGCAAACCTGGAGAAAACCTT
TATGTTAGACAAGATGGGACCAGATCATATTTTTTTACTGATGACTTCTGGCTCAGCTCTTTATGGACA
CAGGTTATGAAGAAGTGGTAAACGAGTATGTGTTTCGAGAGACGGTGAATAAAAAAGAAGGCTGTGTG
GCCAAGAGTTTTCTTCAGAGCAAATTTCTAAAGCCTCCTAAGAACCATCTCTGTGTCTGGCCTG
GATCCTAAGTCC

ACGCGTACGCGGCCGCTCGAG - GFP Tag - GTTTAA



[View online »](#)

Protein Sequence: >RG223504 representing NM_152396
Red=Cloning site Green=Tags(s)

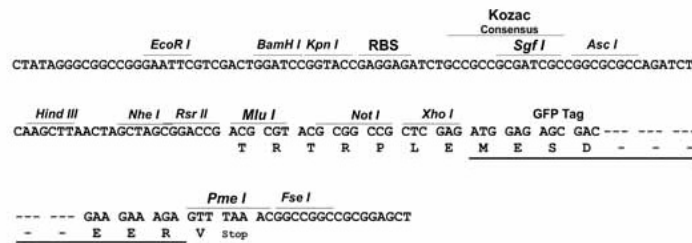
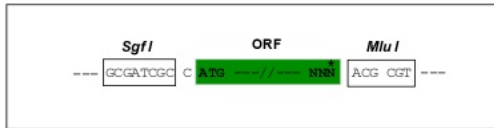
MASLQRKGLQARILTSEEEKLRDQTLVSDFKQKLEQEAQKNWDLFYKRNSTNFFKDRHWTTFEEEL
 RSCREFEDQKL TMLEAGCGVGNCLFPLLEEDPNIFAYACDFSPRAIEYVKQNPLYDTERCKVFQCDLTKD
 DLLLDHVPPESVDVVMILIFVLSAVHPDKMHLVLQNIYKVLKPGKSVLFRDYGLYDHAMLRFKASSKLGENT
 YVRQDGT RSYFF TDDFLAQLFMDTGYEEVVNEYVFRET VNKKEGLCVPRVFLQSKFLKPPKNPSPVVLGL
 DPKS

TRTRPLE - GFP Tag - V

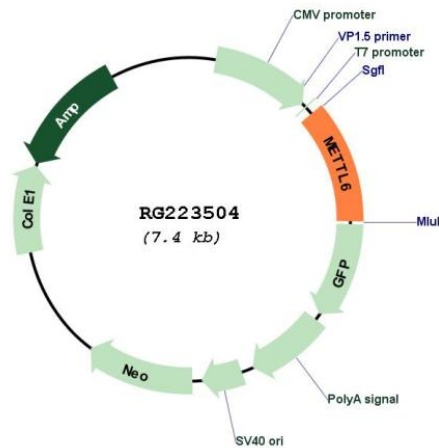
Restriction Sites: Sgfl-MluI

Cloning Scheme:

Cloning sites used for ORF Shutting:



Plasmid Map:



ACCN: NM_152396

ORF Size: 852 bp

OTI Disclaimer:	The molecular sequence of this clone aligns with the gene accession number as a point of reference only. However, individual transcript sequences of the same gene can differ through naturally occurring variations (e.g. polymorphisms), each with its own valid existence. This clone is substantially in agreement with the reference, but a complete review of all prevailing variants is recommended prior to use. More info
OTI Annotation:	This clone was engineered to express the complete ORF with an expression tag. Expression varies depending on the nature of the gene.
Components:	The ORF clone is ion-exchange column purified and shipped in a 2D barcoded Matrix tube containing 10ug of transfection-ready, dried plasmid DNA (reconstitute with 100 ul of water).
Reconstitution Method:	<ol style="list-style-type: none">1. Centrifuge at 5,000xg for 5min.2. Carefully open the tube and add 100ul of sterile water to dissolve the DNA.3. Close the tube and incubate for 10 minutes at room temperature.4. Briefly vortex the tube and then do a quick spin (less than 5000xg) to concentrate the liquid at the bottom.5. Store the suspended plasmid at -20°C. The DNA is stable for at least one year from date of shipping when stored at -20°C.
RefSeq:	NM_152396.4
RefSeq Size:	2499 bp
RefSeq ORF:	855 bp
Locus ID:	131965
UniProt ID:	Q8TCB7
Cytogenetics:	3p25.1
Protein Families:	Druggable Genome
Protein Pathways:	Androgen and estrogen metabolism, Histidine metabolism, Selenoamino acid metabolism, Tyrosine metabolism
Gene Summary:	Probable methyltransferase.[UniProtKB/Swiss-Prot Function]