

Product datasheet for **RG223495**

DDX31 (NM_022779) Human Tagged ORF Clone

Product data:

Product Type:	Expression Plasmids
Product Name:	DDX31 (NM_022779) Human Tagged ORF Clone
Tag:	TurboGFP
Symbol:	DDX31
Synonyms:	PPP1R25
Mammalian Cell Selection:	Neomycin
Vector:	pCMV6-AC-GFP (PS100010)
E. coli Selection:	Ampicillin (100 ug/mL)



[View online »](#)

ORF Nucleotide Sequence:

>RG223495 representing NM_022779
 Red=Cloning site Blue=ORF Green=Tags(s)

TTTTGTAATACGACTCACTATAGGGCGGCCGGGAATTCGTCGACTGGATCCGGTACCGAGGAGATCTGCC
 GCC**CGGATCGCC**

ATGGCGCCGGATCTCGTTCTCAGAGGCATTAGAGAGCTTCCCCAGCGTGAACCTCGGCCGAATGTAA
 TTTTGCCAGGCCGAGGGACGCAGAGAGGGGCTGCCACCAGGCCGGGGCACGCGGGTAGCTTTGTCCC
 TACCCGCCCGGTGCCCGCTCCCGGCTCCCTCGGGACGAGTCCGTACAGCTGGAGCCGTTCCGGACCC
 GGAAGGGGCGGTGGCGCAGGGTCTCGCGCTCCACGTGGGTCCCGGCCAGCAGTCTGCGCACCCGG
 GCTCGTCTGCACCACGCTCACCCACGCAGACCATGGCAGCCGCCGACGGTTCGCTCTTCGACAAACC
 CAGGACGTTCTCCAGACGTCCCCAGCCAGGCGAGTCCGCAAGCAAAGGCTACGAAAAGAAAATACCAA
 GCGTCCAGTGAGGCTCCCCAGCGAAACGGAGGAACGAAACTTCAATTTCTCCAGCCAAGAAAATAGTG
 TTAAGAAAATCAGAGGACTTTAAGGGGAACGCACAAAAATGTTTTCTCCAAAGAAGCATTGGTTAG
 CACAAGTGATAGAAACCAGGAGGAGAGACAGTGCATTAAGACTTCATCACTGTTTAAAAACAACCCCTGAC
 ATTCCAGAATCCACAGACCTGTGGTAAAGCAGGTGCAAGAAAAAGTGTTCATCTCAGCTGCTTTTCATG
 AGCTGGGCTCCACCCACATTAATTTCCACAATAAATACGGTCTAAAAATGTCTAGTATGACCAGTGT
 TCAGAAGCAAAGTATTCCTGTGTGCTGGAAGGCAGAGATGCTCTCGTGAGATCCAGACGGGCTCAGGT
 AAAACTCTTGCTATTGCATCCCTGTGGTCCAGTCCCTTCAAGCAATGGAGTCAAAAATACAGCGCAGTG
 ATGGCCCTATGCCCTGGTGTGCTGTCGCAACGAGAGAGCTAGCTCTACAAAGCTTTGACACTGTCCAGAA
 ACTGCTTAAGCCTTTACCTGGATTGTGCTGGAGTGTAAATGGGAGGAGAGAAGAGAAAATCAGAAAAG
 GCCACTCCGCAAAGGAATAAATATCCTTATCTCAACTCCTGGACGCCGTTGGATCATATAAAATCCA
 AAGAACAATTCATTTTGTGCTCGGTGGTGGTGTGTTGATGAAGCAGACAGAATCTGGATTTGGG
 TTTTGAAGGACATCACAGTGATACTTAATGCTGTAATGCTGAATGCCAAAAACGACAGAATGTCTTG
 CTATCAGCGACACTCACAGAAGGTGAACGCGGCTAGCTGATATCAGTTGCATGATCCAGTCAGTATTT
 CTGTCTGGACAAGGCCATGACCAGTTGAACCCAAAGGACAAAGCGGTCCAGGAGGTCTGTCTCCACC
 AGCTGGGACAAGCTGGACAGCTTTGCAATACCAGAGAGTCTCAAGCAGCATGTGACTGTGGTCCAGC
 AAAGTGGGCTTGTCTGCTAGCGGCTTCATCCTTCAAGAAATGCAAGTTTGGGAAGACCAGAAGATGG
 TTGTCTTTTTCTCAAGTTGCGAGCTGGTGGAGTCCACTACAGCCTTCTCCTACAGACCCTGCTGAGCAG
 CTCAGGGGCGCCGCATCAGGGCAGTTGCCATCTGCCTCCATGCGATTAATTTCTACGGCTGCATGGC
 GGCATGGAGCAGGAGAAAGAACAGCAGTGTTCAGGAATTTTACATTCAGAAGAGGGCTCCTTCTTT
 GCACGGATGTTGCAGCTCGGGGCTTAGATCTCCCTCAAGTCACGTGGATTGTTTCAGTACAACGCTCCATC
 TTCACCTGCAGAATACATCCACCGGATTGGAAGAACCGCCGGATTGGCTGCCATGGGAGCAGCCTGCTC
 ATTTTGGCTCCTTCGGAGGCAGAATATGTCAACTCGTTGGCTTCTCACAAAATCAACGTTTCTGAGATTA
 AGATGGAAGATATTTGTGTGTTCTGACAAGAGATGATTGTTTTAAAGGGAAACGATGGGGAGCCAGAA
 ATCCCATGCTGTTGGCCCCAGGAAATCCGAGAGCGAGCCACAGTCTGCAGACGGTATTTGAAGATTAC
 GTGCACTCCAGTGAGAGGAGGGTCTCCTGGGCAAGAAAGCTCTGCAGTCCTTCAATCAAGCCTACGCCA
 CCTACCCAGGGAGCTGAAGCACATCTTCCAGTCCGATCCCTCCACCTTGGGCATGTGGCAAGAGCTT
 CGGACTAAGAGATGCCCCAGGAATCTTGTGCTTACTAGAAAAGAAAGGAAAGCACACAGTGAAGAGG
 CCTGACCTTCATAAGAAGACCCAGAGTAAACACAGCCTCGCTGAAATCCTACGTTTCGGAATACTCAAGCG
 GCATGGAGGCCGACATCGCCAAGGTCAAAAAGCAAAACGCACCTGGAGAGCCTGGTGGCCGGCCCTGCA
 GCACAGTCTGCAGCCGACACCCTGCTTTGGCCGTGGGAAAACATTAATAATGGAGAAAAACCCAAAAAGGT
 GTACAGCGGGACAGCAAGACTTCCAGAAAAGTT

AGCGGACCGACGCGTACGCGGCCGCTCGAG - GFP Tag - GTTTAA

Protein Sequence: >RG223495 representing NM_022779
Red=Cloning site Green=Tags(s)

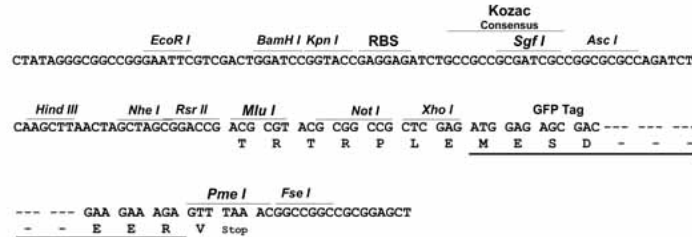
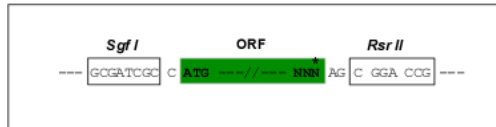
MAPDLASQRHSEFFSVNSRPNVILPGREGREGLPPGGGTRGSLVPTRPVPPSPAPLGTSPYSWSRSGP
GRGGGAGSSRVPRGVPGPVAVCAPGSLHHSPTQTMAAADGSLFDNPRTFRRPPAQASRQAKATKRKYQ
ASSEAPPARRNETSFLPAKKTQRTFKGNAQKMFSPKKHSVSTSDRNQEERQCIKTSSLFKNND
IPELHRPVVQVQEKVFTSAAFHELGLHPLISTINTVLKMSMSTSVQKQSIQVLLLEGRDALVRSQTGSG
KTLAYCIPVVQSLQAMESKIQRSDGPYALVLPVPTRELALQSFDTVQKLLKPFWTWIVPGVLMGGEKRSK
ARLRKGINILISTPGRLVDHIKSTKNIHFRLRVLVDFEADRILDLGFEKIDITVILNAVNAECQKRNVL
LSATLTEGVTRLADISLHDPVSI SVLDKSHDQLNPKDKAVQEVCPAGDKLDSFAIPESLKQHVTVVPS
KLRLVCLAALFQKCKFEEDQKVVVSSCELVEFHYSFLQTLSSSGAPASGQLPSASMLKFLRLHG
GMEQEERTAVFQEFHSRRGVLLCTDVAARGLDLPQVTWIVQYNAPSSPAEYIHRIGRTARIGCHGSSLL
ILAPSEAEYVNSLASHKINVSEIKMEDILCVL TRDDCFKGRWGAQKSHAVGPQEI RERATVLTQVFEDY
VHSSERRVSWAKKALQSF IQAYATYPRELKHIFHVRSLHLGHVAKSFGLRDAPRNL SAL TRKKRKAHVKR
PDLHKKTQSKHSLAEILRSEYSSGMEADIAKVKKQNPAGGPRPLQHSLOPTPCFGRGKTLKWRKTQKG
VQRDSKTSQKV

SGPTRRRLE - GFP Tag - V

Restriction Sites: Sgfl-RsrII

Cloning Scheme:

Cloning sites used for ORF Shuttling:



- ACCN:** NM_022779
- ORF Size:** 2553 bp
- OTI Disclaimer:** The molecular sequence of this clone aligns with the gene accession number as a point of reference only. However, individual transcript sequences of the same gene can differ through naturally occurring variations (e.g. polymorphisms), each with its own valid existence. This clone is substantially in agreement with the reference, but a complete review of all prevailing variants is recommended prior to use. [More info](#)
- OTI Annotation:** This clone was engineered to express the complete ORF with an expression tag. Expression varies depending on the nature of the gene.
- Components:** The ORF clone is ion-exchange column purified and shipped in a 2D barcoded Matrix tube containing 10ug of transfection-ready, dried plasmid DNA (reconstitute with 100 ul of water).

Reconstitution Method:

1. Centrifuge at 5,000xg for 5min.
2. Carefully open the tube and add 100ul of sterile water to dissolve the DNA.
3. Close the tube and incubate for 10 minutes at room temperature.
4. Briefly vortex the tube and then do a quick spin (less than 5000xg) to concentrate the liquid at the bottom.
5. Store the suspended plasmid at -20°C. The DNA is stable for at least one year from date of shipping when stored at -20°C.

RefSeq: [NM_022779.8](#)

RefSeq Size: 3285 bp

RefSeq ORF: 2241 bp

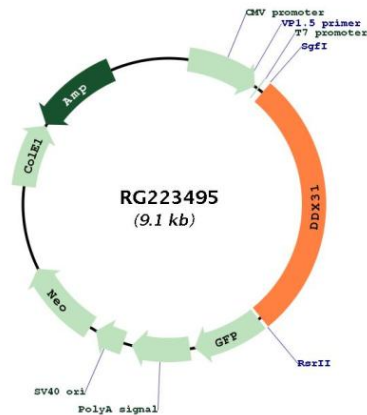
Locus ID: 64794

UniProt ID: [Q9H8H2](#)

Cytogenetics: 9q34.13

Gene Summary: DEAD box proteins, characterized by the conserved motif Asp-Glu-Ala-Asp (DEAD), are putative RNA helicases. They are implicated in a number of cellular processes involving alteration of RNA secondary structure such as translation initiation, nuclear and mitochondrial splicing, and ribosome and spliceosome assembly. Based on their distribution patterns, some members of this DEAD box protein family are believed to be involved in embryogenesis, spermatogenesis, and cellular growth and division. This gene encodes a member of this family. The function of this member has not been determined. Alternative splicing of this gene generates multiple transcript variants encoding different isoforms. [provided by RefSeq, Apr 2016]

Product images:



Circular map for RG223495