

## Product datasheet for **RG223489**

### **TBC1D9B (NM\_198868) Human Tagged ORF Clone**

#### Product data:

Product Type:	Expression Plasmids
Product Name:	TBC1D9B (NM_198868) Human Tagged ORF Clone
Tag:	TurboGFP
Symbol:	TBC1D9B
Synonyms:	GRAMD9B
Mammalian Cell Selection:	Neomycin
Vector:	pCMV6-AC-GFP (PS100010)
E. coli Selection:	Ampicillin (100 ug/mL)
ORF Nucleotide Sequence:	>RG223489 representing NM_198868 Red=Cloning site Blue=ORF Green=Tags(s)

TTTTGTAATACGACTCACTATAGGGCGGCCGGAATTCGTCGACTGGATCCGGTACCGAGGAGATCTGCC  
GCC**CGATCGCC**

ATGTGGCTGAGCCGGAGGAGGTGCTGGTGGCCAATGCGCTGTGGGTGACGGAGCGGGCCAACCCCTTCT  
TCGTGCTGCAGCGACGCCGGGGCCACGGCAGGGCGCGGCCCTTACGGGTCTTCTCGTGGGCACCCTGGA  
CGTGGTGTGACTCCAGTGCCCGGTGGCCCTTACCGCATCCTGCACCAGACCCAGGACTCCCAGGTC  
TACTGGACAGTGGCGTGTGGTCTTCCCGCAAAGAGATCACAAAACACTGGGAATGGCTGGAAAATAACT  
TGCTCCAGACACTGTCCATCTTCGACAGTGAGGAAGATATCACCACCTTCGTCAAGGGCAAGATACACGG  
AATCATCGCAGAAGAGAACAAGAACCTGCAGCCCCAGGGAGACGAGGACCCCGGAAGTTCAAGGAGGCT  
GAGCTGAAGATGCGGAAGCAGTTTGGGATGCTGAGGGCGAGAAGCTGGTGAATTACTACTCCTGCAGCT  
ACTGGAAGGGCCGCTGCCCGGCGAGGGCTGGCTGTACCTGACGGTCAACCACCTGTGCTTACTCCTT  
CCTGCTGGGGAAGGAAGTGAGCCTCGTGGTGCAGTGGGTGGACATAACCGCTCTGGAGAAGAAGCCACC  
CTGCTCTCCCGAGAGCATCCGTGTGGACACCCGCGACCCAGGAGCTCTTCTTCCATGTTCTCAACA  
TCGGCGAGACCTCAAGCTCATGGAGCAGTTGGCCAACCTGGCCATGCGGCAGCTGCTGGACAGCGAGGG  
CTTCTGGAGGACAAGGCCCTGCCTAGGCCATCCGGCCACACAGGAACATCTCAGCCCTGAAGCGAGAC  
CTGGACGCCGAGCCAAGAATGAGTGTACCGAGCCAGTTCCGGCTGCCAGGATGAGCGGCTAGACG  
GCCACACAAGCTGCACCCTGTGGACGCCGTTCAACAAGCTGCACATCCCTGGCCAGATGTTATCTCCAA  
CAACTACATCTGCTTCGCCAGCAAGGAGGAGGACGCTTGCCACCTCATCATACCCCTGAGGGAGGTGACC  
ATTGTCGAAAAAGCTGACAGCTCCAGCGTGTGCCAGCCCCCTGTCCATCAGCACAAAAGCAAAATGA  
CATTCTGTTTGCCAACCTGAAAGACCGTGATTTCTTGGTGCAGAGGATCTCTGACTTCTCCAGAAAAC  
ACCATCAAGCAGCCAGGAGTATCGGGAGCAGGAAAGCCAGTGTGTGGACCCTAGCACAGAGTCTTCC  
CCAGCTCCTCAGGAGGGTGGAGCAGCCGCCAGCCAGCCCTCCCCCTCAGCAGCCGCCAGAGCTTCT  
GTGCGCAGGAGGCCAACCGCATCCCAGGCCGCTGTAAGCTCTCCAGAAAACCTGCCCATGGAGGA  
CCTTGGAGCCAAGGGGGCCAAGGAGAAGATGAAAGAGGAGTCATGCCACATCCACTTCTCGAGTACGGG



[View online »](#)

CGTGGCGTGTGCATGTACCGCACAGCAAGACGCGGGCACTGGTCTGAAGGGTATCCCTGAGAGCCTCC  
GGGGAGAGCTGTGGCTCCTTTCTCCGGGGCTGGAATGAGATGGTGACTCACCCGGGACTATGCTGA  
GCTGGTGGAGAAGTCCACCGGAAGTACAGCCTGGCCACAGAGGAGATCGAGCGAGACCTGCACCCTCC  
ATGCCCGAGCACCTGCCTTCCAGAACGAGCTGGGGATTGCTGCCCTCCGGCGGGTGTGACTGCCTATG  
CCTTCCGAAACCCACCATCGGCTACTGCCAGGCAATGAACATCGTGACCTCGGTGCTCCTGCTCTATGG  
CAGTGAGGAGGAGGCCTTCTGGCTCCTGGTGGCCCTGTGCGAGCGCATGCTGCCGACTACTACAACACC  
AGGGTGGTGGGAGCCCTGGTGGACCAAGGCATCTTCAAGAGCTCACGAGAGACTTCTGCCGAGCTCT  
CGGAGAAGATGCAGGACCTGGGGGTGATCTCCAGCATCTCGCTGTCTGGTTCTGACCCTCTTCTCAG  
CGTCATGCCCTTCGAGAGCGCCGTGGTCACTCGTCGACTGCTTTTTCTATGAGGGCATCAAGTGATCCTG  
CAGGTGGCCCTGGCCGTCTGGACGCCAACATGGAGCAGCTGCTGGGCTGCAGCGACGAGGGCGAGGCCA  
TGACCATGCTGGGCAGATACCTGGATAATGTGGTCAACAAGCAGAGTGTCTCTCCTATCCCGCACCT  
CCGTGCCTTGTGAGCAGCAGCGATGACCCCTGCAGAGGTGGACATCTTTGAGCTCCTGAAAGTGTC  
TATGAGAAATTCAGCAGCCTGAGGGCCGAAGACATTGAGCAGATGCGGTTAAACAGAGGCTGAAAGTA  
TCCAGTCTTGGAGGACCGCCAAGAGGAGTGGTCCGAGCTATACCTGTGGACATTGGTTTCTCCAT  
TGAAGAGCTGGAGACCTTTACATGGTGTAAAGGCCAAGCACCTGGCTAGCCAGTACTGGGGTGCAGC  
CGACAATGGCCGGCCGTCCGGGACCCAGCCTGCCCTACCTGGAGCAGTACCGGATTGATGCCAGCCAGT  
TCCGGGAACCTTTGCCAGCCTGACACCCTGGGCTGTGGCTCCACACACCTCTGCTGGCAGGGCGCAT  
GTTCAGGCTCCTGGACGAAAACAAGGACTCGTGATCAACTTCAAGGAGTTCGTGACAGGGATGAGCGGG  
ATGTACCACGGGGACCTGACAGAGAAGCTCAAGGTGCTCTACAAGCTACACCTTCCCCAGCTCTGAGCC  
CAGAGGAAGCCGAGTCAAGCCTGGAGGGCGCCATTATTTACAGAGGACAGCTCCTCAGAAGCATCTCC  
TCTGGCCTCAGATCTGGATCTTTTCTGCCCTGGGAGGCTCAAGAAGCACTACCACAGGAAGAGCAAGAA  
GGAAGTGAAGTGAGGAGAGAGGAGAGGAGAAGGGGACCAGCTCTCCGGACTATCGGCACACTACCTTCGAA  
TGTGGCCAAGGAGAAAGAGGCTCAGAAGGAGACGATTAAGGATCTTCCAAGATGAACCAGGAGCAGTT  
CATTGAGCTGTGCAAGACGCTTTACAACATGTTCAAGTGAAGACCCCATGGAGCAGGACCTGTACCAGCC  
ATCGCCACCCTGGCCAGCCTCCTGCTCCGCATCGGAGAGGTGGGGAAGAAGTTCTCAGCCCGCACAGGCA  
GGAAGCCAGGGACTGTGCCACTGAGGAGGACGAGCCACCAGCACCCGAAGTGCATCAGGACGCAGCCAG  
GGAGCTTCAAGCCCGAGCTGCAGGAGACCCCAAGCCAAAGCAGGCGGAGACACACACTCGGAAAAGCC  
CCACAGGAGAGCCAGGTGGTGGTGGAGGGGGCAGCGCGAGGGACAGGGCTCACCTCCAGCTGCTGT  
CTGACGATGAAACCAAGACGACATGTCCATGTCTCTACTCGGTGGTCAACAGGGCTCCCTGCAATG  
TGAAGACCTTGCAGACGACACGGTGTGGTGGGCGGGGAGGCTGCAGCCCCACAGCGGCATCGGCGGC  
ACCGTCGACACCGACTGGTGCATCTCCTTTGAGCAGATCCTGGCCTCCATCCTGACGGAGTCCGTGCTGG  
TGAACCTCTTTGAGAAGAGAGTGGACATTGGACTCAAGATCAAGGACCAAAAGAAAGTGGAGAGACAGTT  
CAGCACCGCCAGTGACCATGAGCAGCCTGGAGTTTCCGGC

AGCGGACCGACGCGTACGCGGCCGCTCGAG - GFP Tag - GTTTAA

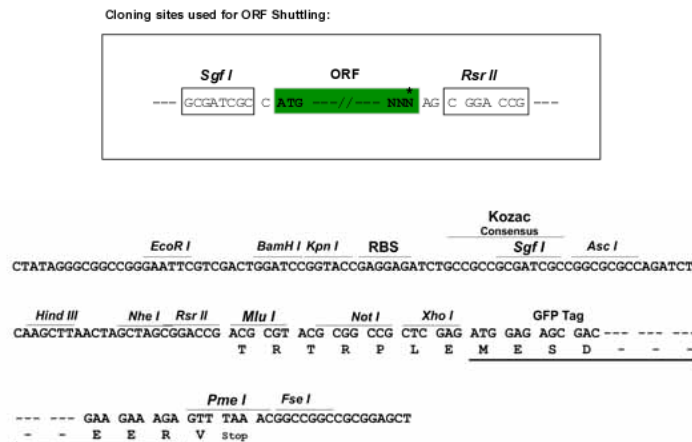
**Protein Sequence:** >RG223489 representing NM\_198868  
 Red=Cloning site Green=Tags(s)

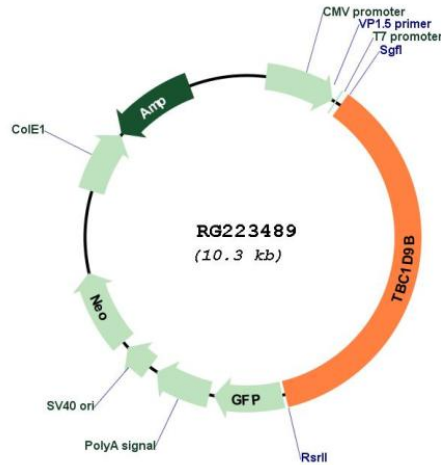
MWLSPEEVLVANALWVTERANPFFVLQRRRGHGRGGGLTGLLVGTLDDVLDSSARVAPYRILHQTQDSQV  
 YWTVACGSSRKEITKHWLENNLLQTL SIFDSEEDITTFVKGKIHGIIAEENKNLQPQGDDEPGKFKEA  
 ELKMRKQFGMPEGEKLVNYYSCSYWKGRVPRQGWLYLTVNHLCFYSFLLGKEVSLVVQWVDITRLEKNAT  
 LLFPESIRVDTRDQELFFSMFLNIGETFKLMEQLANLAMRQLLDSEGFLEDKALPRPIRPHRNISALKRD  
 LDARAKNECYRATFRLPRDERLDGHTSCTLWTFPNKLHIPPQMFISNNYICFASKEEDACHLIIPLREVT  
 IVEKADSSSVLPSPSISTKSKMTFLFANLKDRDFLVQRISDFLQKTPSKQPGSIGSRKASVVDPSTESS  
 PAPQEGSEQPASPASPLSSRQSFCAQEAPTASQGLLKLKFKNSPMEDLGAKGAKEKMKKEESWHIHFYEY  
 RGVCMYRTAKTRALVLKGIPESLRGELWLLFSGAWNEMVTHPGYAEVVEKSTGKYSLATETEEIERDLHRS  
 MPEHPAFQNELGIAALRRVL TAYAFRNPTIGYQAMNIVTSVLLLYGSEEEAFWLLVALCERMLPDYYNT  
 RVVGDLDVQGIFFELTRDFLPQLSEKMQDLGVISSISLSWFLTLFLSVMFPFESAVVIVDCFFYEGIKVIL  
 QVALAVLDANMEQLLGCSDGEAMTMLGRYLDNVVNKQSVSPPIPHLRALLSSSDPPAEVDIFELLKVS  
 YEKFSSLRAEDIEQMRFKQRLKVIQSL EDTAKRSVVRAIPVDIGFSIEELEDLYMVFKAHLASQYWGCS  
 RTMAGRRDPSLPYLEQYRIDASQFREL FASLTPWACGSHTPLL AGRMFRLLDENKDSLINFKEFVTGMSG  
 MYHGDLTEKLVLYKLHLPALSPEEAESALEAAHYFTEDSSSEASPLASDLDFLPWEAQEALPQEEQE  
 GSGSEERGEKGTSSPDYRHYLRMWAKEKEAQKETIKDLPKMNQEQFIELCKTLNMFSEDPMEQDLYHA  
 IATVASLLLRIGEVGKKFSARTGRKPRDCATEEPPAPELHQDAARELQPPAAGDPQAKAGGDTHLGKA  
 PQESQVVVEGSGEGQGSQQLSDDETKDDMSMSSYSVVSTGSLQCEDLADDTVLVGGEACSPTARIGG  
 TVD TDWCISFEQILASILTESVLVNF FEKRVDIGLKIKDQKKVERQFSTASDHEQPGVSG

SGPTRRRLE - GFP Tag - V

**Restriction Sites:** SgfI-RsrII

**Cloning Scheme:**



**Plasmid Map:**


**ACCN:** NM\_198868

**ORF Size:** 3750 bp

**OTI Disclaimer:** The molecular sequence of this clone aligns with the gene accession number as a point of reference only. However, individual transcript sequences of the same gene can differ through naturally occurring variations (e.g. polymorphisms), each with its own valid existence. This clone is substantially in agreement with the reference, but a complete review of all prevailing variants is recommended prior to use. [More info](#)

**OTI Annotation:** This clone was engineered to express the complete ORF with an expression tag. Expression varies depending on the nature of the gene.

**Components:** The ORF clone is ion-exchange column purified and shipped in a 2D barcoded Matrix tube containing 10ug of transfection-ready, dried plasmid DNA (reconstitute with 100 ul of water).

**Reconstitution Method:**

1. Centrifuge at 5,000xg for 5min.
2. Carefully open the tube and add 100ul of sterile water to dissolve the DNA.
3. Close the tube and incubate for 10 minutes at room temperature.
4. Briefly vortex the tube and then do a quick spin (less than 5000xg) to concentrate the liquid at the bottom.
5. Store the suspended plasmid at -20°C. The DNA is stable for at least one year from date of shipping when stored at -20°C.

**RefSeq:** [NM\\_198868.3](#)

**RefSeq Size:** 5189 bp

**RefSeq ORF:** 3753 bp

**Locus ID:** 23061

**UniProt ID:** [Q66K14](#)

**Cytogenetics:** 5q35.3

**Gene Summary:** May act as a GTPase-activating protein for Rab family protein(s).[UniProtKB/Swiss-Prot Function]