

Product datasheet for **RG223473**

KCNMA1 (NM_001014797) Human Tagged ORF Clone

Product data:

Product Type:	Expression Plasmids
Product Name:	KCNMA1 (NM_001014797) Human Tagged ORF Clone
Tag:	TurboGFP
Symbol:	KCNMA1
Synonyms:	bA205K10.1; BKTM; CADEDS; hSlo; IEG16; KCa1.1; LIWAS; MaxiK; mSLO1; PNKD3; SAKCA; SLO; SLO-ALPHA; SLO1
Mammalian Cell Selection:	Neomycin
Vector:	pCMV6-AC-GFP (PS100010)
E. coli Selection:	Ampicillin (100 ug/mL)
ORF Nucleotide Sequence:	>RG223473 representing NM_001014797 Red=Cloning site Blue=ORF Green=Tags(s)

TTTTGTAATACGACTCACTATAGGGCGGCCGGGAATTCGTCGACTGGATCCGGTACCGAGGAGATCTGCC
GCC**CGATCGCC**

ATGGCAAATGGTGGCGGGCGGGCGGCAGCAGCGGGCGGGCGGGCGGGCGGGAGGCAGCAGTCTTA
GAATGAGTAGCAATATCCACGCGAACCATCTCAGCCTAGACGCGTCTCTCTCTCTCTCTCTCTCT
CTCTTCTTCTTCT
ATCCCGGTGACCATGGAGGTGCCGTGCGACAGCCGGGGCCAAACGCATGTGGTGGGCTTCTCTGGCCTCT
CCATGGTGACTTCTCTCGGGGCTCTTTCATCATCTTGTCTCTGGCGACGCTCAAGTACCTGTGGACCGT
GTGCTGCCACTGCGGGGCAAGACGAAGGAGGCCAGAAGATTAACAATGGCTCAAGCCAGGCGGATGGC
ACTCTCAAACCAGTGGATGAAAAAGAGGAGGCAGTGGCCGCCGAGGTCGGCTGGATGACCTCCGTGAAGG
ACTGGGCGGGGGTATGATATCCGCCAGACACTGACTGGCAGAGTCTGGTTGTCTTAGTCTTTGCTCT
CAGCATCGGTGCACTTGAATATACTTCATAGATTCATCAAACCAATAGAATCTCGCCAGAATTTCTAC
AAAGATTTACATTACAGATCGACATGGCTTTCACAGTGTCTTCTCTCTCTCTCTCTCTCTCTCTCTCT
TTGCAGCCAACGATAAATGTGGTTCTGGCTGGAAGTGAAGTCTGTAGTGGATTTCTTACGGTGCCCCC
CGTGTTTGTGTCTGTACTTAAACAGAAGTGGCTTGGTTTGGATTTTAAAGAGCTCTGAGACTGATA
CAGTTTTCAGAAATTTTCAGTTTCTGAATATTCTTAAACAAGTAATCCATCAAGCTGGTGAATCTGC
TCTCCATATTTATCAGCACGTGGCTGACTGCAGCCGGTTCATCCATTTGGTGGAGAATTCAGGGGACCC
ATGGGAAAATTTCAAACAACAGGCTCTCACCTACTGGAATGTGTCTATTTACTCATGGTCAACAATG
TCCACCGTTGGTTATGGGATGTTTATGCAAAAACACACTTGGGCGCCTTTCATGGTCTTCTTTCATCC
TCGGGGGACTGGCCATGTTTGCAGCTACGTCCCTGAAATCATAGAGTTAATAGGAAACCGCAAGAATA
CGGGGGCTCCTATAGTGCAGTGTAGTGAAGAAAGCACATTGTGGTCTGCGGACACATCACTCTGGAGAGT
GTTTCCAACCTTCTGAAGGACTTCTGCACAAGGACCGGATGACGTCAATGTGGAGATCGTTTTTCTCT
ACAACATCTCCCCAACCTGGAGCTTGAAGCTCTGTTCAAACGACATTTTACTCAGTGGAATTTTATCA



GGGTTCCGTCCTCAATCCACATGATCTTGCAAGAGTCAAGATAGAGTCAGCAGATGCATGCCTGATCCTT
GCCAACAAAGTACTGCGCTGACCCGGATGCGGAGGATGCCTCGAATATCATGAGAGTAATCTCCATAAAGA
ACTACCATCCGAAGATAAGAATCATCACTCAAATGCTGCAGTATCACAACAAGGCCCATCTGCTAAACAT
CCCAGCTGGAATTGGAAAGAAGGTGATGACGCAATCTGCCTCGCAGAGTTGAAGTTGGGCTTCATAGCC
CAGAGCTGCCTGGCTCAAGGCCCTCCACCATGCTTGCCAACCTTTCTCCATGAGGTATTTCATAAAGA
TTGAGGAAGACACATGGCAGAAATACTACTTGGAAAGGAGTCTCAAATGAAATGTACACAGAATATCTCTC
CAGTGCCTTCGTGGGTCTGTCTCCCTACTGTTTGTGAGCTGTGTTTTGTGAAGCTCAAGCTCCTAATG
ATAGCCATTGAGTACAAGTCTGCCAACCAGAGAGCCGAAGCCGAAAGCGTATATTAATTAATCCTGGAA
ACCATCTTAAGATCCAAGAAGGTAATTTAGGATTTTTTCATCGCAAGTGTGCCAAAGAAGTTAAAAGGGC
ATTTTTTACTGCAAGGCCTGTGATGATGACATCACAGATCCCAAAAAGAAATAAAAAATGTGGTGCAAA
CGGCTTGAAGATGAGCAGCCGTCAACACTATCACCAAAAAAAGCAACGGAATGGAGGCATGCGGAACT
CACCAACACCTCGCTAAGCTGATGAGGCATGACCCCTGTTAATTCCTGGCAATGATCAGATTGACAA
CATGGACTCCAATGTGAAGAAGTACGACTCTACTGGGATGTTTACTGGTGTGCACCAAGGAGATAGAG
AAAGTCATCCTGACTCGAAGTGAAGCTGCCATGACCGTCTGAGTGGCCATGTCGTGGTCTGCATCTTTG
GCGACGTGAGCTCAGCCCTGATCGCCCTCCGGAACCTGGTGTGCGCTCCGTGCCAGCAACTTTCATTA
CCATGAGCTCAAGCACATTGTGTTTTGTGGGCTCTATTGAGTACCTCAAGCGGGAATGGGAGACGCTTCAT
AACTTCCCAAAAGTGTCCATATTGCCTGGTACGCCATTAGTCCGGCTGATTTAAGGGCTGTCAACATCA
ACCTCTGTGACATGTGCGTTATCCTGTGACGCAATCAGAATAATTTGATGATACTTCGCTGCAGGACAA
GGAATGCATCTTGGCGTCACTCAACATCAAATCTATGCAGTTTGATGACAGCATCGGAGTCTTGCAGGCT
AATTCCAAGGGTTCACACCTCCAGGAATGGATAGATCCTCTCCAGATAACAGCCAGTGCACGGGATGT
TACGTCAACCATCCATCACAACCTGGGGTCAACATCCCCATCATCACTGAACTAGTGAACGATACTAATGT
TCAGTTTTTGGACCAAGACGATGATGATGACCCGTGATACAGAAGTGTACCTCACGCAGCCCTTTGCCTGT
GGGACAGCATTTGCCGTGAGTGTCTGGACTCACTCATGAGCGGACGTACTTCAATGACAATATCCTCA
CCCTGATACGGACCCTGGTGACCGGAGGAGCCACGCCGAGCTGGAGGCTCTGATTGCTGAGGAAAACGC
CCTTAGAGGTGGCTACAGCACCCCGCAGACACTGGCCAATAGGGACCGCTGCCGCTGGCCAGTTAGCT
CTGCTCGATGGGCCATTTGCGGACTTAGGGGATGGTGGTTGTTATGGTGTCTGTTCTGCAAAGCTCTGA
AAACATAAATATGCTTTGTTTTGGAATTTACCGGCTGAGAGATGCTCACCTCAGCACCCCCAGTCAGTG
CACAAAGAGGTATGTCATACCAACCCGCCCTATGAGTTTGTGAGCTCGTCCGACGGACCTGATCTTCTGC
TTAATGCAGTTTGACCACAATGCCGGCCAGTCCCGGGCCAGCCTGTCCATTCTCCCACTCGTCGCAGT
CCTCCAGCAAGAAGAGCTCCTCTGTTCACTCCATCCCATCCACAGCAAACCGACAGAACCGGCCCAAGTC
CAGGGAGTCCCGGACAAACAGAACAGAAAAGAAATGTTTACAGA

AGCGGACCGACGCGTACGCGGCCGCTCGAG - GFP Tag - GTTTAA

Protein Sequence: >RG223473 representing NM_001014797
 Red=Cloning site Green=Tags(s)

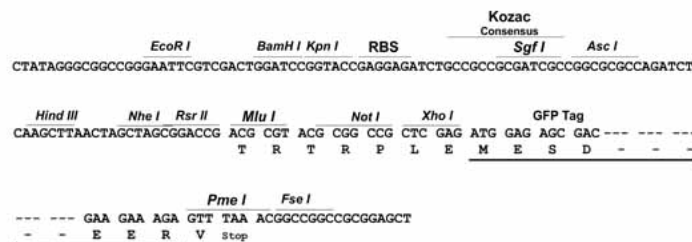
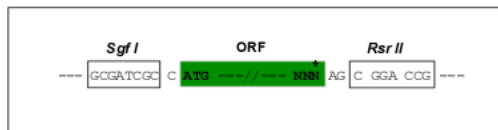
MANGGGGGGGSSGGGGGGSSLRMSSNIHANHLSLDASSSSSSSSSSSSSSSSSSSSSSSVHEPKMDALI
 IPVTMEVPCDSRQRMWAWFLASSMVTFFGGFLIILLWRTLKYLWTVCCCHCGGKTKEAQKINNGSSQADG
 TLKPVDEKEEAVAAEVGWMTSVKDWAGVMISAQTLTGRVLLVLFALSIGALVIYFIDSSNPIESCQNFY
 KDFTLQIDMAFNVFLLYFGLRFAANDKLWFLEVNVSVDFFTVPPVFSVYLNRSWGLRFLRALRLI
 QFSEILQFLNILKTSNSIKLVNLLSIFISTWLTAAGF IHLVENSQDPWENFQNNQALTYWECVYLLMVTM
 STVGYGDVYAKTTLGRLFMVFFILGGLAMFASYVPEIIEIIGNRKYGGSYSAVSGRKHIVVCGHITLES
 VSNFLKDFLHKDRDDVNVEIVFLHNI SPNLELEALFKRHFTQVEFYQGSVLNPHDLARVKIESADAACLIL
 ANKYCADPDAEDASNIMRVISIKNYHPKIRIITQMLQYHNKAHLLNIPSWNKEGDDAICLAELKLGFAIA
 QSCLAQGLSTMLANLFSMRSFIKIEEDTWQKYYLEGVSNEMYTEYLSSAFVGLSFPTVCELFCVVKLLLM
 IAI EYKSANRESRSRKRILINPGNHLKIQEGTLGFFIASDAKEVKRAFFYCKACHDDITDPKRIKCGCK
 RLEDEQPSTLSPKKKQRNGGMRNSPNTSPKLMRHDPLLIPGNDQIDNMSNVKKYDSTGMFHCAPKEIE
 KVILTRSEAAMTVLSGHVVVCIFGDVSSALIGLRNLV MPLRASNFHYHELKHIVFVGSIEYLKREWETLH
 NFPKVSILPGTPLSRADLRAVNINL CDMCVILSANQNNIDDTSLQDKECILASLNKSMQFDDSIGVLQA
 NSQGFPTPGMDRSPDNVPVHGMRLRQPSITTVGNIPITELVNDTNVQFLDQDDDDDPDTELYLTQPFAC
 GTAFVSVLDSLMSATYFNDNILTIRTLTVTGGATPELEALIAEENALRGGYSTPQTLANRDRCRVAQLA
 LLDGPFADLDGGGCGDLFCALKTYNMLCFGIYRLRDAHLSTPSQCTKRYVITNPPYEFELVPTDLIFC
 LMQFDHNAGQSRASLSHSSHSSQSSSKSSSVHSIPSTANRQNRPKSRESRDKQNRKEMVYR

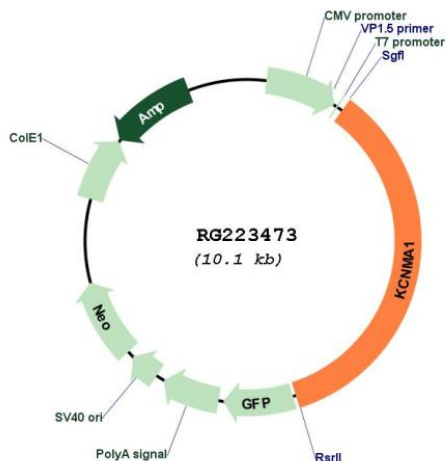
SGPTRRRLE - GFP Tag - V

Restriction Sites: SgfI-RsrII

Cloning Scheme:

Cloning sites used for ORF Shuttling:



Plasmid Map:


ACCN: NM_001014797

ORF Size: 3546 bp

OTI Disclaimer: Due to the inherent nature of this plasmid, standard methods to replicate additional amounts of DNA in *E. coli* are highly likely to result in mutations and/or rearrangements. Therefore, OriGene does not guarantee the capability to replicate this plasmid DNA. Additional amounts of DNA can be purchased from OriGene with batch-specific, full-sequence verification at a reduced cost. Please contact our customer care team at custsupport@origene.com or by calling 301.340.3188 option 3 for pricing and delivery.

The molecular sequence of this clone aligns with the gene accession number as a point of reference only. However, individual transcript sequences of the same gene can differ through naturally occurring variations (e.g. polymorphisms), each with its own valid existence. This clone is substantially in agreement with the reference, but a complete review of all prevailing variants is recommended prior to use. [More info](#)

OTI Annotation: This clone was engineered to express the complete ORF with an expression tag. Expression varies depending on the nature of the gene.

Components: The ORF clone is ion-exchange column purified and shipped in a 2D barcoded Matrix tube containing 10ug of transfection-ready, dried plasmid DNA (reconstitute with 100 ul of water).

Reconstitution Method:

1. Centrifuge at 5,000xg for 5min.
2. Carefully open the tube and add 100ul of sterile water to dissolve the DNA.
3. Close the tube and incubate for 10 minutes at room temperature.
4. Briefly vortex the tube and then do a quick spin (less than 5000xg) to concentrate the liquid at the bottom.
5. Store the suspended plasmid at -20°C. The DNA is stable for at least one year from date of shipping when stored at -20°C.

RefSeq: [NM_001014797.3](#)

RefSeq Size:	11993 bp
RefSeq ORF:	3549 bp
Locus ID:	3778
UniProt ID:	Q12791
Cytogenetics:	10q22.3
Protein Families:	Druggable Genome, Ion Channels: Potassium, Transmembrane
Protein Pathways:	Vascular smooth muscle contraction
Gene Summary:	MaxiK channels are large conductance, voltage and calcium-sensitive potassium channels which are fundamental to the control of smooth muscle tone and neuronal excitability. MaxiK channels can be formed by 2 subunits: the pore-forming alpha subunit, which is the product of this gene, and the modulatory beta subunit. Intracellular calcium regulates the physical association between the alpha and beta subunits. Alternatively spliced transcript variants encoding different isoforms have been identified. [provided by RefSeq, Jul 2008]