

Product datasheet for **RG223427**

Heterogeneous Nuclear Ribonucleoprotein (A1 like) (HNRNPA1L2) (NM_001011725) Human Tagged ORF Clone

Product data:

Product Type:	Expression Plasmids
Product Name:	Heterogeneous Nuclear Ribonucleoprotein (A1 like) (HNRNPA1L2) (NM_001011725) Human Tagged ORF Clone
Tag:	TurboGFP
Symbol:	HNRNPA1L2
Mammalian Cell Selection:	Neomycin
Vector:	pCMV6-AC-GFP (PS100010)
E. coli Selection:	Ampicillin (100 ug/mL)
ORF Nucleotide Sequence:	>RG223427 representing NM_001011725 Red=Cloning site Blue=ORF Green=Tags(s)

TTTTGTAATACGACTCACTATAGGGCGGCCGGAATTCGTCGACTGGATCCGGTACCGAGGAGATCTGCC
GCC**CGATCGCC**

ATGTCTAAGTCAGCGTCTCCAAAAGAGCCCGAACAGCTGAGGAAGCTCTTCATTGGAGGGTTGAGCTTTG
AAACAACCTGATGAGAGCCTGAGGAGCCATTTTGGCAATGGGGAACGCTCACAGACTGTGTGGAATGAG
AGATCCAAACACCAAGCGCTCCAGGGGCTTTGGGTTTGTACATATGCCACTGTGGAGGAGGTGGATGCA
GCTATGAATACAACGCCACACAAGGTGGATGGAAGAGTTGTGGAACCAAAGAGAGCTGTCTCCAGAGAAG
ATTCTCAAAGACCAGGTGCCCACTTAACGTGAAAAAGATATTTGTTGGTGGCATTAAAGAAGACTGA
AGAACATCACCTAAGAGATTATTTGAACAGTATGGAAAAATTGAAGTAATTGAAATCATGACTGACCGA
GGCAGTGGCAAGAAAAGGGGCTTTGCCTTTGTAACCTTTGACGACCATGACTCCGTGGATAAGATTGTCA
TTCAGAAATACCACTACTGTGAAGGGCCACAACCTGTGAAGTTAGAAAAGCCCTGCCAAAGCAAGAGATGGC
TAGTGCTTCATCCAGCCAAAGAGGTGCAAGGGGTTCTGGAAACTTTGGTGGTGGCTTTGGTGGCAGCTGTGGT
GGTGGGAATGACAACCTTTGGTCGTGGAGGAACTTCAGTGGTGGTGGTGGCTTTGGTGGCAGCTGTGGT
GTGGTGGATGGTGGCAGTGGGATGGCTATAATGGATTTGGTAATGATGGAAGCAATTTGGAGGTGG
TGAAGCTACAATGATTTTGGCAATTACAACAATCAGTCTTCAAATTTTGGACCCATGAAGGGAGGAAAT
TTTGGAGGCAGAAGCTCTGGCCCTATGGCGGTGGAGGCCAATACTTTGCAAACCACAAAACCAAGGTG
GCTATGGCGTTTCCAGCAGCAGCAGTAGCTATGGCAGTGGCAGAAGATTT

ACGCGTACGCGGCCGCTCGAG - GFP Tag - GTTTAA



[View online »](#)

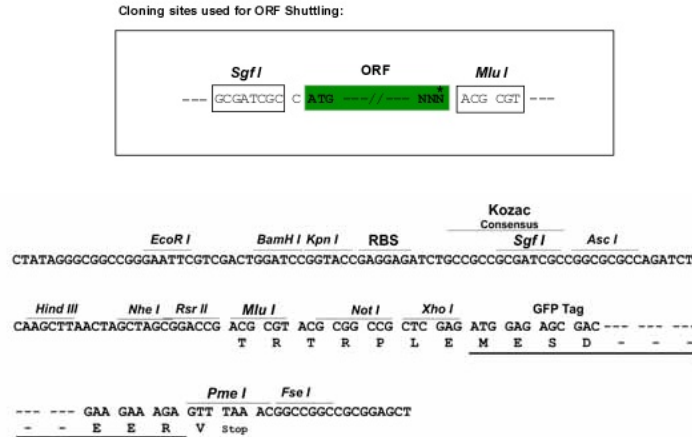
Protein Sequence: >RG223427 representing NM_001011725
 Red=Cloning site Green=Tags(s)

MSKSASPKEPEQLRKLFIGGLSFETTDESLRSHFEQWGLTDCVVMRDPNPKRSRGGFVFTYATVEEVDA
 AMNTTPHKVDGRVVEPKRAVSREDSQRPGAHLTVKKIFVGGIKEDTEHHLRDYFEQYGKIEVIEIMTDR
 GSGKKRGFAFVTFDDHDSVDKIVIQKYHTVKGHNCEVRKALPKQEMASASSSQRRRSGSNFGGGRGDGF
 GGNDNFGRGGNFSGRGGFGGSCGGGGYGGSDGYNGFGNDGSNFGGGGSYNDFGNYNQSSNFGPMKGGN
 FGGRSSGPYGGGQYFAKPQNQGGYGVSSSSSYGSGRRF

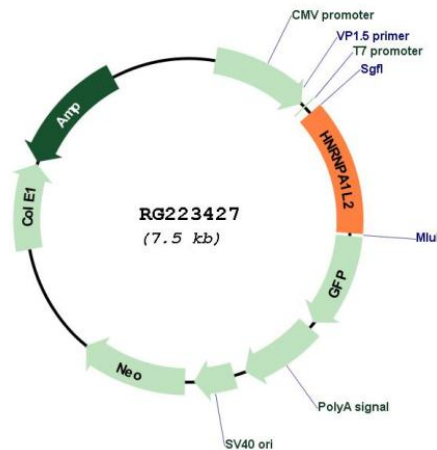
TRTRPLE - GFP Tag - V

Restriction Sites: SgfI-MluI

Cloning Scheme:



Plasmid Map:



ACCN: NM_001011725

ORF Size: 960 bp

OTI Disclaimer:	The molecular sequence of this clone aligns with the gene accession number as a point of reference only. However, individual transcript sequences of the same gene can differ through naturally occurring variations (e.g. polymorphisms), each with its own valid existence. This clone is substantially in agreement with the reference, but a complete review of all prevailing variants is recommended prior to use. More info
OTI Annotation:	This clone was engineered to express the complete ORF with an expression tag. Expression varies depending on the nature of the gene.
Components:	The ORF clone is ion-exchange column purified and shipped in a 2D barcoded Matrix tube containing 10ug of transfection-ready, dried plasmid DNA (reconstitute with 100 ul of water).
Reconstitution Method:	<ol style="list-style-type: none"> 1. Centrifuge at 5,000xg for 5min. 2. Carefully open the tube and add 100ul of sterile water to dissolve the DNA. 3. Close the tube and incubate for 10 minutes at room temperature. 4. Briefly vortex the tube and then do a quick spin (less than 5000xg) to concentrate the liquid at the bottom. 5. Store the suspended plasmid at -20°C. The DNA is stable for at least one year from date of shipping when stored at -20°C.
RefSeq:	NM_001011725.2
RefSeq Size:	2224 bp
RefSeq ORF:	963 bp
Locus ID:	144983
UniProt ID:	Q32P51
Cytogenetics:	13q14.3
Protein Pathways:	Spliceosome
Gene Summary:	Involved in the packaging of pre-mRNA into hnRNP particles, transport of poly(A) mRNA from the nucleus to the cytoplasm and may modulate splice site selection.[UniProtKB/Swiss-Prot Function]