

Product datasheet for **RG223367**

PPP1R14B (NM_138689) Human Tagged ORF Clone

Product data:

Product Type: Expression Plasmids
Product Name: PPP1R14B (NM_138689) Human Tagged ORF Clone
Tag: TurboGFP
Symbol: PPP1R14B
Synonyms: PHI-1; PLCB3N; PNG; SOM172
Mammalian Cell Selection: Neomycin
Vector: pCMV6-AC-GFP (PS100010)
E. coli Selection: Ampicillin (100 ug/mL)
ORF Nucleotide Sequence: >RG223367 representing NM_138689
 Red=Cloning site Blue=ORF Green=Tags(s)

TTTTGTAATACGACTCACTATAGGGCGGCCGGAATTCGTCGACTGGATCCGGTACCGAGGAGATCTGCC
 GCC**CGATCGCC**

ATGGCGGACAGCGGCACCGCGGGGGCGCGCGTGGCGGCCCGGCCCGGGCCGGGCAGTGCGGGCC
 CAGGACCACGCGTCTACTTTAGAGCCCCCGGGCCGAGGAGAGGGCCCGGGCGGGCGGACGATGA
 GGGCCAGTGAGGCGCAAGGGAAGGTACCGTCAAGTATGACCGCAAGGAGCTACGGAAGCGCCTCAAC
 CTAGAGGAGTGGATCCTGGAGCAGCTCACGCGCCTCTACGACTGCCAGGAAGAGGAGATCCAGAAGTGG
 AGATTGACGTGGATGAGCTCCTGGACATGGAGAGTGACGATGCCCGGGCTGCCAGGTCAAGGAGCTGCT
 GGTGACTGTTACAAACCACAGAGGCCTTCATTTCTGGCTGCTGGACAAGATCCGGGGCATGCAGAAG
 CTGAGCACACCCAGAAGAAG

AG**CGGACCG**ACGCGTACGCGGCCGCTCGAG - GFP Tag - GTTTAA

Protein Sequence: >RG223367 representing NM_138689
 Red=Cloning site Green=Tags(s)

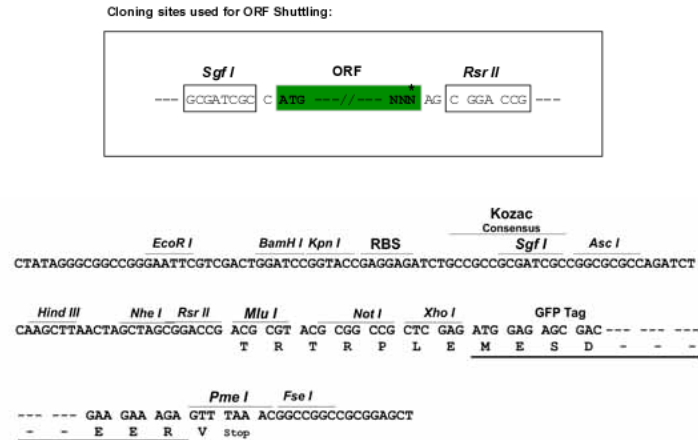
MADSGTAGGAALAAPAPGPGSGGPRVYFQSPPGAAGEGPGGADDEGPVRRQGVTVKYDRKELRKRLN
 LEEWILEQLTRL YDCQEEEEIPELEIDVDELDMESDDARAARVKELLVDCYKPTAFISGLLDKIRGMQK
 LSTPQKK

SGP**TRRRLE** - GFP Tag - V

Restriction Sites: Sgfl-RsrII



[View online »](#)

Cloning Scheme:


ACCN: NM_138689

ORF Size: 441 bp

OTI Disclaimer: The molecular sequence of this clone aligns with the gene accession number as a point of reference only. However, individual transcript sequences of the same gene can differ through naturally occurring variations (e.g. polymorphisms), each with its own valid existence. This clone is substantially in agreement with the reference, but a complete review of all prevailing variants is recommended prior to use. [More info](#)

OTI Annotation: This clone was engineered to express the complete ORF with an expression tag. Expression varies depending on the nature of the gene.

Components: The ORF clone is ion-exchange column purified and shipped in a 2D barcoded Matrix tube containing 10ug of transfection-ready, dried plasmid DNA (reconstitute with 100 ul of water).

Reconstitution Method:

1. Centrifuge at 5,000xg for 5min.
2. Carefully open the tube and add 100ul of sterile water to dissolve the DNA.
3. Close the tube and incubate for 10 minutes at room temperature.
4. Briefly vortex the tube and then do a quick spin (less than 5000xg) to concentrate the liquid at the bottom.
5. Store the suspended plasmid at -20°C. The DNA is stable for at least one year from date of shipping when stored at -20°C.

RefSeq: [NM_138689.3](#)

RefSeq Size: 1038 bp

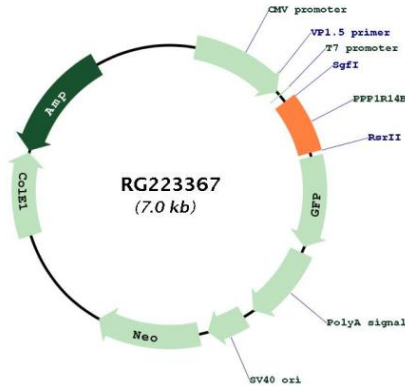
RefSeq ORF: 444 bp

Locus ID: 26472

UniProt ID: [Q96C90](#)

Cytogenetics: 11q13.1
 Domains: PP1_inhibitor
 Gene Summary: Inhibitor of PPP1CA. Has over 50-fold higher inhibitory activity when phosphorylated (By similarity).[UniProtKB/Swiss-Prot Function]

Product images:



Circular map for RG223367