

## Product datasheet for **RG223360**

### TLL1 (NM\_012464) Human Tagged ORF Clone

#### Product data:

Product Type:	Expression Plasmids
Product Name:	TLL1 (NM_012464) Human Tagged ORF Clone
Tag:	TurboGFP
Symbol:	TLL1
Synonyms:	ASD6; TLL
Mammalian Cell Selection:	Neomycin
Vector:	pCMV6-AC-GFP (PS100010)
E. coli Selection:	Ampicillin (100 ug/mL)
ORF Nucleotide Sequence:	>RG223360 representing NM_012464 Red=Cloning site Blue=ORF Green=Tags(s)

TTTTGTAATACGACTCACTATAGGGCGGCCGGAATTCGTCGACTGGATCCGGTACCGAGGAGATCTGCC  
GCC**CGATCGCC**

ATGGGGTTGGGAACGCTTTCCCGAGGATGCTCGTGTGGCTGGTGGCCTCGGGGATTGTTTTCTACGGG  
AGCTATGGGTCTGCGCTGGCCTCGATTATGATTACACTTTTGATGGGAACGAAGAGGATAAAACAGAGAC  
TATAGATTACAAGGACCCGTGTAAGCCGCTGTATTTGGGGCGATATTGCCTTAGATGATGAAGACTTA  
AATATCTTTCAAATAGATAGGACAATTGACCTTACGCAGAACCCCTTTGGAAACCTTGACATACCACAG  
GTGGACTTGGAGACCATGCTATGTCAAAGAAGCGAGGGGCCCTACCACTTATAGACAGGATAAGAAG  
AATTGGCTTTGGCTTGGAGCAAAACAACACAGTTAAGGGAAAAGTACCTCTACAATTCTCAGGGCAAAAT  
GAGAAAAATCGAGTTCAGAGCCGCTACATCAAGAACGAAAGAATATGGCCTGGAGGCGTTATTCCTT  
ATGTTATAGGAGGAACTTCACTGGCAGCCAGAGAGCCATGTTCAAGCAGGCCATGAGGCACTGGGAAAA  
GCACACATGTGTGACTTTATAGAAAGAAGTGAAGAGAGTTACATTGTATTCACCTATAGGCCCTTGT  
GGATGCTGCTCCTATGTAGGTCGGCGAGGAAATGGACCTCAGGCAATCTCTATCGGAAGAAGTGTGATA  
AATTTGGGATTGTTGTTTCATGAATTGGGTCATGTGATAGGCTTTTGGCATGAACACACAAGACCAGATCG  
AGATAACCACGTAACATCATAAGAGAAAAATCCAGCCAGGTCAAGAGTACAATTTTCTGAAGATGGAG  
CCTGGAGAAGTAACTCACTTGGAGAAAGATGATTTTCGACAGTATCATGCATATGCCAGGAACACCT  
TCTCAAGGGGATGTTTTCTGGATACCATTCTCCCCTCCCGTATGATAAATGGCATACGTCCTGCAATTGG  
TCAGCGAACCCGCTAAGCAAAGGAGATATCGCACAGGCAAGAAAGCTGTATAGATGTCCAGCATGTGGA  
GAAACTCTACAAGAATCCAATGGCAACCTTTCCTCTCCAGGATTTCCCAATGGCTACCCTTCTTACACAC  
ACTGCATCTGGAGAGTTTCTGTGACCCAGGGGAGAAGATTGTTTTAAATTTTACAACGATGGATCTATA  
CAAGAGTAGTTTGTGCTGGTATGACTATATTGAAGTAAGAGACGGGACTGGAGAAAATCACCTCTCCTT  
GGTAGATTCTGTGGGACAAATGCCTGAAGTTCTTACTTCTACAGACAGCAGAATGTGGATTGAGTTTC  
GTAGCAGCAGTAATTGGGTAGGAAAAGGCTTTGCAGCTGTCTATGAAGCGATCTGTGGAGGTGAGATACG  
TAAAAATGAAGGACAGATTCACTCTCCAATTATCCTGATGACTATCGCCCGATGAAAGAATGTGTGTGG



[View online »](#)

AAAATAACAGTGTCTGAGAGCTACCACGTCGGGCTGACCTTTCAGTCCTTTGAGATTGAAAGACATGACA  
 ATTGTGCTTATGACTACCTGGAAGTTAGAGATGGAACCACTGAAAATAGCCCTTTGATAGGGCGTTTCTG  
 TGGTTATGACAAACCTGAAGACATAAGATCTACCTCCAATACTTTGTGGATGAAGTTTGTCTGACGGA  
 ACTGTGAACAAAGCAGGGTTTGTCTAACTTTTTAAAGAGGAAGATGAGTGTGCCAACCTGACCGTG  
 GAGGCTGTGAGCAGCGATGTCTGAACACTCTGGGCAGTACCAGTGTGCCTGTGAGCCTGGCTATGAGCT  
 GGGCCAGACAGAAGGAGCTGTGAAGCTGCTTGTGGTGGACTTCTTACCAAATTAACGGCACCAATACC  
 ACCCTGGCTGGCCCAAGGAGTACCCTCCTAATAAGAACTGTGTGTGGCAAGTGTGCACCAACCCAGT  
 ACAGAATTTCTGTGAAGTTTGTGTTTTTGAATTGGAAGCAATGAAGTTTGCAAATATGATTATGTGGA  
 GATCTGGAGTGGTCTTCTCTGAGTCTAACTGCATGGCAAATCTGTGGCGCTGAAGTGCCTGAAGTG  
 ATCACATCCCAGTTCAACAATATGAGAATTGAATCAAATCTGACAATACTGTATCCAAGAAGGGCTTCA  
 AAGCACATTTTTCTCAGACAAAGATGAATGCTCTAAGGATAATGGTGGATGTCAGCAGCAATGTGTCAA  
 CACGATGGGGAGCTACATGTGTCAATGCCGTAATGGATTTGTGCTACATGACAATAAACATGATTGCAAG  
 GAAGCTGAGTGTGAACAGAAGATCCACAGTCCAAGTGGCCTCATCACCAGTCCCAACTGGCCAGACAAGT  
 ACCCAAGCAGAAAGAATGCACTTGGGAAATCAGCGCCACTCCTGGCCACCGAATCAAATAGCCTTTAG  
 TGATTTGAGATTGAGCAGCATCAAGAATGTGCTTATGACCACTAGAAGTATTTGATGGAGAAACAGAA  
 AAGTACCAGATTCTGGACGACTGTGTGCAACAAGATACCAGATCCCCTTGTGGCTACTGGAAATAAAA  
 TTTTTGTTGCGTTTGTCTGATGCATCTGTTCAAAGAAAAGGCTTTCAAGCTACACATTCTACAGAGTG  
 TGGCGGACGATTGAAAGCAGAATCAAAACCAAGAGATCTGTAATCACATGCTCAGTTTGGTATAACAAC  
 TACCCAGGACAGTTGACTGTGAATGGCTATTAGTATCAGAACGGGGCTCTGACTTGAATTATCCTTCC  
 AGACATTTGAAGTGGAGGAAGAAGCAGACTGTGGCTATGACTATGTGGAGCTCTTTGATGGTCTTGATTC  
 AACAGCTGTGGGCTTGGTCGATTCTGTGGATCCGGGCCACCAGAAGAGATTTATCAATTGGAGATTCA  
 GTTTAATTCAATTCACACTGATGACACAATCAACAAGAAGGGATTTTATATAAGATACAAAAGCATAA  
 GATATCCAGATACCACACATACCAAAAAA

ACGCGTACGCGGCCGCTCGAG - GFP Tag - GTTTAA

**Protein Sequence:**

>RG223360 representing NM\_012464  
 Red=Cloning site Green=Tags(s)

MGLGTLSPRMLVWLVASGIVFYGELWVCAGLDYDYTFDGNEEDKTETIDYKDPCKAAVFWGDIALDDEDL  
 NIFQIDRTIDLTONPFGNLGHTTGGLDHAMSCKRGALYQLIDRIRRIGFLEQNNTVKGVPLQFSGQN  
 EKNRVPRAATSRTERIWPGGVIPYVIGGNFTGSQRAMFKQAMRHWEKHTCVTFIERSDEESYIVFTYRPC  
 GCCSYVGRNGPQAISIGKNCDFGIVVHELGHVIGFWHEHTRPDRDNHVTIIRENIQPGQEYNFLKME  
 PGEVNSLGERYDFDSIMHYARNTFSRGMFLDTILPSRDDNGIRPAIGQRTRL SKGDIAQARKLYRCPACG  
 ETLQESNGNLSSPGFPNGYPSYTHCIWRVSVTPGEKIVLNFTTMDLYKSSLCWYDYIEVRDGYWRKSPLL  
 GRFCGDKLPEVL TSTDSRMWIEFRSSSNWVGKFAAVYEAI CGGEIRKNEGQIQSPNYPDDYRPMKECVW  
 KITVSESYHVGLTFQSFIEIERNCAVDYLEVRDGTSENSPLIGRFCGYDKPEDIRSTSNTLWMKFVSDG  
 TVNKAGFAANFFKEEDECAKPDRCGCEQRCLNTLGSYQACEPGYELGPDRRSCEAACGGLLTKLNGTIT  
 TPGWPKEYPPNKNVWQVVAAPTQYRISVKFEFFLEEGNEVCKYDYVEIWSGLSSESKLHGKFCGAEVPEV  
 ITSQFNNMRIEFKSDNTVSKKGFKAHFFSDKDECSKDNGGCQHECVNTMGSYMCQCRNGFVLHDNKHDCK  
 EAEECEQKIHSPSGLITSPNWPDKYPSRKECTWEISATPGHRIKLAFFSEFEIEQHQECAYDHLEVFDETE  
 KSPILGRLCGNKIPDPLVATGNKMFVRFVSDASVQRKGFQATHSTECGRLKAESKPRDLYSHAQFGDNN  
 YPGQVDCEWLLVSEGRSLELSFQTFEVEEEADCGYDYVELFDGLDSTAVGLGRFCGSGPPEEIIYSIGDS  
 VLIHFHTDDTINKKGFHIRYKSIRYPDTTHTTK

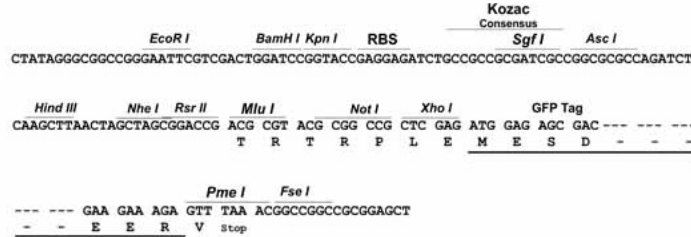
TRTRPLE - GFP Tag - V

**Restriction Sites:**

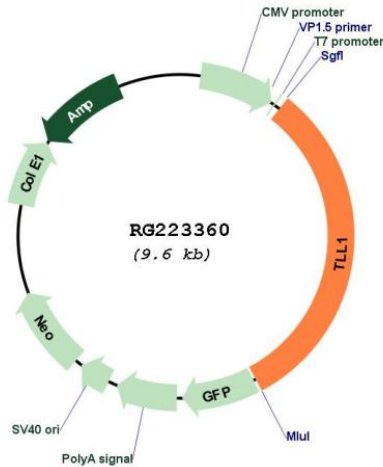
Sgfl-MluI

Cloning Scheme:

Cloning sites used for ORF Shutting:



Plasmid Map:



ACCN: NM\_012464

ORF Size: 3039 bp

OTI Disclaimer: The molecular sequence of this clone aligns with the gene accession number as a point of reference only. However, individual transcript sequences of the same gene can differ through naturally occurring variations (e.g. polymorphisms), each with its own valid existence. This clone is substantially in agreement with the reference, but a complete review of all prevailing variants is recommended prior to use. [More info](#)

<b>OTI Annotation:</b>	This clone was engineered to express the complete ORF with an expression tag. Expression varies depending on the nature of the gene.
<b>Components:</b>	The ORF clone is ion-exchange column purified and shipped in a 2D barcoded Matrix tube containing 10ug of transfection-ready, dried plasmid DNA (reconstitute with 100 ul of water).
<b>Reconstitution Method:</b>	<ol style="list-style-type: none"><li>1. Centrifuge at 5,000xg for 5min.</li><li>2. Carefully open the tube and add 100ul of sterile water to dissolve the DNA.</li><li>3. Close the tube and incubate for 10 minutes at room temperature.</li><li>4. Briefly vortex the tube and then do a quick spin (less than 5000xg) to concentrate the liquid at the bottom.</li><li>5. Store the suspended plasmid at -20°C. The DNA is stable for at least one year from date of shipping when stored at -20°C.</li></ol>
<b>RefSeq:</b>	<u><a href="#">NM_012464.5</a></u>
<b>RefSeq Size:</b>	6654 bp
<b>RefSeq ORF:</b>	3042 bp
<b>Locus ID:</b>	7092
<b>UniProt ID:</b>	<u><a href="#">O43897</a></u>
<b>Cytogenetics:</b>	4q32.3
<b>Protein Families:</b>	Druggable Genome, Protease, Secreted Protein
<b>Gene Summary:</b>	This gene encodes an astacin-like, zinc-dependent, metalloprotease that belongs to the peptidase M12A family. This protease processes procollagen C-propeptides, such as chordin, pro-biglycan and pro-lysyl oxidase. Studies in mice suggest that this gene plays multiple roles in the development of mammalian heart, and is essential for the formation of the interventricular septum. Allelic variants of this gene are associated with atrial septal defect type 6. Alternatively spliced transcript variants encoding different isoforms have been found for this gene. [provided by RefSeq, Mar 2011]