

## Product datasheet for **RG223341**

### Doppel (PRND) (NM\_012409) Human Tagged ORF Clone

#### Product data:

**Product Type:** Expression Plasmids  
**Product Name:** Doppel (PRND) (NM\_012409) Human Tagged ORF Clone  
**Tag:** TurboGFP  
**Symbol:** Doppel  
**Synonyms:** dj1068H6.4; DOPPEL; DPL; PrPLP  
**Mammalian Cell Selection:** Neomycin  
**Vector:** pCMV6-AC-GFP (PS100010)  
**E. coli Selection:** Ampicillin (100 ug/mL)  
**ORF Nucleotide Sequence:** >RG223341 representing NM\_012409  
Red=Cloning site Blue=ORF Green=Tags(s)

TTTTGTATACGACTCACTATAGGGCGGCCGGAATTCGTCGACTGGATCCGGTACCGAGGAGATCTGCC  
GCC**CGATCGCC**

ATGAGGAAGCACCTGAGCTGGTGGTGGCTGGCCACTGTCTGCATGCTGCTCTTCAGCCACCTCTCTGCGG  
TCCAGACGAGGGGCATCAAGCACAGAATCAAGTGAACCGGAAGGCCCTGCCAGCACTGCCAGATCAC  
TGAGGCCAGGTGGCTGAGAACC GCCGGGAGCCTTCATCAAGCAAGGCCGAAGCTCGACATTGACTTC  
GGAGCCGAGGGCAACAGGTACTACGAGGCCAACTACTGGCAGTTCCTCCGATGGCATCCACTACAACGGCT  
GCTCTGAGGCTAATGTGACCAAGGAGGCATTTGTACCGGCTGCATCAATGCCACCCAGGCGGCGAACCA  
GGGGGAGTTCCAGAAGCCAGACAACAAGCTCCACCAGCAGGTGCTCTGGCGGCTGGTCCAGGAGCTCTGC  
TCCTCAAGCATTGCGAGTTTGGTTGGAGAGGGGCGCAGGACTTCGGGTACCATGCACCAGCCAGTGC  
TCCTCTGCCTTCTGGCTTTGATCTGGCTCACGGTGA

**ACGCGT**ACGCGGCCGCTCGAG - GFP Tag - GTTTAA

**Protein Sequence:** >RG223341 representing NM\_012409  
Red=Cloning site Green=Tags(s)

MRKHL S W W L A T V C M L L F S H L S A V Q T R G I K H R I K W N R K A L P S T A Q I T E A Q V A E N R P G A F I K Q G R K L D I D F  
G A E G N R Y Y E A N Y Q F P D G I H Y N G C S E A N V T K E A F V T G C I N A T Q A A N Q G E F Q K P D N K L H Q Q V L W R L V Q E L C  
S L K H C E F W L E R G A G L R V T M H Q P V L L C L L A L I W L T V K

**TRTRPLE** - GFP Tag - V

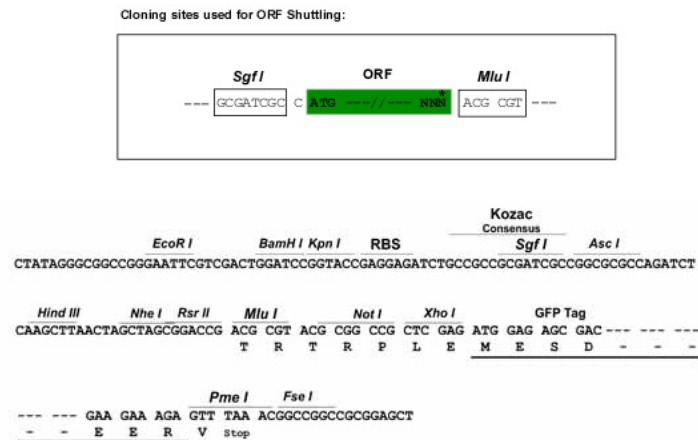
**Chromatograms:** [https://cdn.origene.com/chromatograms/ja1985\\_a03.zip](https://cdn.origene.com/chromatograms/ja1985_a03.zip)



[View online »](#)

Restriction Sites: SgfI-MluI

Cloning Scheme:



ACCN: NM\_012409

ORF Size: 528 bp

OTI Disclaimer: The molecular sequence of this clone aligns with the gene accession number as a point of reference only. However, individual transcript sequences of the same gene can differ through naturally occurring variations (e.g. polymorphisms), each with its own valid existence. This clone is substantially in agreement with the reference, but a complete review of all prevailing variants is recommended prior to use. [More info](#)

OTI Annotation: This clone was engineered to express the complete ORF with an expression tag. Expression varies depending on the nature of the gene.

Components: The ORF clone is ion-exchange column purified and shipped in a 2D barcoded Matrix tube containing 10ug of transfection-ready, dried plasmid DNA (reconstitute with 100 ul of water).

Reconstitution Method:

1. Centrifuge at 5,000xg for 5min.
2. Carefully open the tube and add 100ul of sterile water to dissolve the DNA.
3. Close the tube and incubate for 10 minutes at room temperature.
4. Briefly vortex the tube and then do a quick spin (less than 5000xg) to concentrate the liquid at the bottom.
5. Store the suspended plasmid at -20°C. The DNA is stable for at least one year from date of shipping when stored at -20°C.

Note: Plasmids are not sterile. For experiments where strict sterility is required, filtration with 0.22um filter is required.

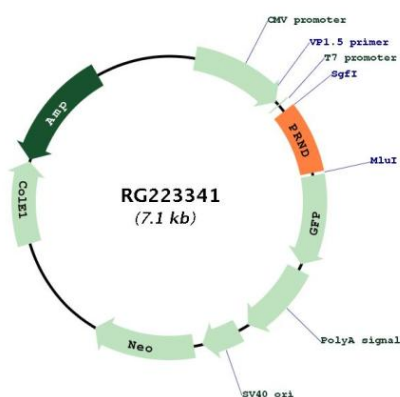
RefSeq: [NM\\_012409.4](#)

RefSeq Size: 4047 bp

RefSeq ORF: 531 bp

Locus ID:	23627
UniProt ID:	<a href="#">Q9UKY0</a>
Cytogenetics:	20p13
Protein Families:	Druggable Genome, Transmembrane
Gene Summary:	This gene is found on chromosome 20, approximately 20 kbp downstream of the gene encoding cellular prion protein, to which it is biochemically and structurally similar. The protein encoded by this gene is a membrane glycosylphosphatidylinositol-anchored glycoprotein that is found predominantly in testis. Mutations in this gene may lead to neurological disorders. [provided by RefSeq, Jul 2008]

## Product images:



Circular map for RG223341