

Product datasheet for **RG223322**

COL8A1 (NM_001850) Human Tagged ORF Clone

Product data:

Product Type:	Expression Plasmids
Product Name:	COL8A1 (NM_001850) Human Tagged ORF Clone
Tag:	TurboGFP
Symbol:	COL8A1
Synonyms:	C3orf7
Mammalian Cell Selection:	Neomycin
Vector:	pCMV6-AC-GFP (PS100010)
E. coli Selection:	Ampicillin (100 ug/mL)



[View online »](#)

ORF Nucleotide
Sequence:

>RG223322 representing NM_001850
Red=Cloning site Blue=ORF Green=Tags(s)

TTTTGTAATACGACTCACTATAGGGCGGCCGGGAATTCGTCGACTGGATCCGGTACCGAGGAGATCTGCC
GCCGCGATCGCC

ATGGCTGTGCTGCTGCGCCTCTGCAGCTGCTGGGAGTGTGCTTACCATTTCCTGAGTTCATCAGGC
TCATTCAGGCTGGTGCCTACTATGGGATCAAGCCGCTGCCACCTCAAATTCCTCCTCAGATGCCACCACA
AATCCACAATACCAGCCCTGGGTGAGCAAGTACCTCACATGCCTTTGGCCAAAGATGGCCTTGCCATG
GGCAAGGAGATGCCCCACTTGCAGTATGGCAAAGAGTATCCACACCTACCCCAATATATGAAGGAAATTC
AACCGGCGCCAAGAATGGGCAAGGAAGCGTACCCAAGAAAGGCAAGAAATACCATTAGCCAGTTTACG
AGGGGAACAAGGTCCCCGTGGAGAGCCTGGCCAAAGAGGACCACCTGGGCCCCCTGGTTTGCAGGTCAT
GGGATACCTGGAATTAAGGAAAACCAGGGCCACAGGGATATCCAGGAGTTGGAAAGCCAGGTATGCCTG
GAATGCCAGGGAAGCCAGGAGCCATGGGCATGCCTGGGGCAAAGGAGAAATGGACAGAAAGGGGAAAT
TGGGCCTATGGGGATCCCAGGACCACAAGGACCTCCAGGGCCTCATGGACTTCTGGCATTGGGAAGCCA
GGTGGGCCAGGGTTACCAGGGCAACCAGGACCAAGGGTATCGAGGACCCAAAGGACTACCAGGACCTC
AAGGCCTTCGGGGTCTAAAGGAGACAAGGGCTTCGGGATGCCAGGTGCCAGGTGTAAGGGGGCTCC
AGGGATGCACGGCCCTCCCGCCCTGTTGGACTGCCAGGAGTGGGCAAACCAGGAGTGACAGGCTTCCCT
GGGCCCCAGGGCCCCCTGGGAAAGCCAGGGGCTCCAGGAGAACCTGGGCCACAAGGCCCTATTGGGGTAC
CGGGGGTTCAAGGACCTCCTGGGATACCCGGAATTGGAAGCCAGGCCAGGATGGGATCCCAGGCCAGCC
AGGATTTCCAGGTGGCAAAGGGGAGCAAGGACTGCCAGGGCTACCAGGACCCCAAGGCTTCCAGGGATT
GGGAAACCAGGCTTCCCAGGACCCAAAGGTGACCGGGCATGGGAGGTGTTCTGGGGCTCTTGACCAA
GAGGGGAGAAAGGACCAATAGGTGCCCAAGGAAATAGGGGGTCTCCAGGAGAGCCAGGCTGCCTGGGAT
CCAGGTCTATGGGCCCTCCAGGTGCTATTGGTTTTCTGGACCCAAAGGAGAAAGGTGGGATTGTAGGG
CCACAGGGGCCACCAGGTCCCAAGGGTGAAGCAGGGCTTCAAGGCTTCCAGGAAAGCCAGGTTTCTTG
GTGAAGTAGGGCTCCTGGCATGAGGGGTTTGCCAGGTCCATAGGGCCCAAGGGGGAAGCTGGGCAAAA
AGGTGTACCAGGACTCCCTGGTGTCCAGGGCTTCTCGGACCTAAGGGAGAGCCAGGAATCCCAGGGGAT
CAGGGTTTACAGGGCCCCCAGGTATCCCAGGGATTGGGGCCCTAGTGGCCCCATTGGACCACCTGGGA
TTCCAGGCCCCAAAGGGAGCCGGGCTCCCAGGGCCCCCTGGTTCCCTGGTATAGGGAAACCCGGAGT
GGCAGGACTTCATGGCCCCCAGGGAAGCCTGGTGCCTTGGTCTCAAGGCCAGCCTGGCCTTCCAGGA
CCCCCAGGCCCTCCAGGACCTCCAGGACCCCAAGGTGTGATGCCCTACACCACCACCCAGGGAGAGT
ATCTGCCAGATATGGGGCTGGGAATTGATGGCGTGAAACCCCCCATGCCTACGGGGCTAAGAAAGGCAA
GAATGGAGGGCCAGCCTATGAGATGCCTGCATTTACCGCCGAGCTAACCGCACCTTTCCACCGGTGGGG
GCCCCAGTGAAGTTTAAACAACTGCTGTATAACGGCAGACAGAATAACCCCGCAGACAGGCATCTTCA
CCTGTGAGGCCCTGGTGTCTACTACTTTGCATACCACGTTCACTGCAAGGGGGGCAACGTGTGGGTTGC
TCTATTCAAGAACAACGAGCCCGTGTGTACACGTACGACGAGTACAAAAAGGGCTTCTGGACCAGGCA
TCTGGGAGTGCAGTGTGCTGCTCAGGCCCGGAGACCGGGTGTTCCTCCAGATGCCCTCAGAACAGGCTG
CAGGACTGTATGCCGGGCAGTATGTCCACTCCTCTTTTCAGGATATTTATTGTATCCCATG

ACGCGTACGCGGCCGCTCGAG - GFP Tag - GTTTAA

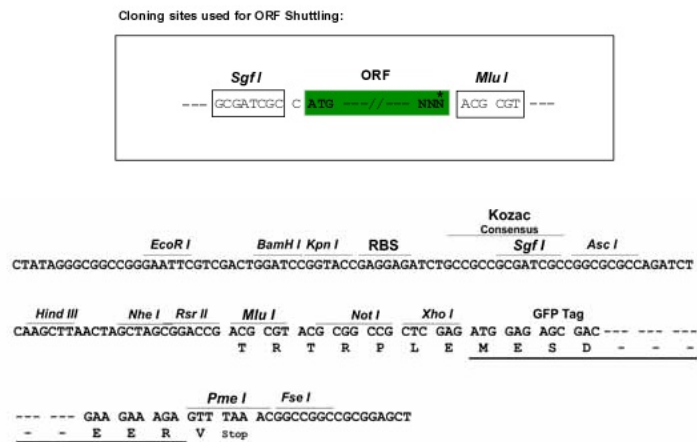
Protein Sequence: >RG223322 representing NM_001850
Red=Cloning site Green=Tags(s)

```
MAVLPGPLQLLGVLLTISLSSIRLIQAGAYYGKPLPPQIPPQMPPIQYQPLGQQVPHMPLAKDGLAM
GKEMPHLQYQKEYPHLPQYMKIQAPAPRMGKEAVPKKGEIPLASLRGEQGPRGEPGPRGPPGPPGLPGH
GIPGIGKPGPGQYYPGVGKPGMPGMPGKPGAMGMPGAKGEIGQKGEIGPMGIPGPQGGPHGLPGIGKP
GGPGLPGQPGPKGDRGPKGLPGPQGLRGPKGDKFGMPGAPGVKGGPPGMHGGPPVGLPGVGKPGVTGFP
GPQGPLGKPGAPGEPGPQGPVIGVPGVQGGPPGIPGIGKPGQDGIPIGQPGFPGGKGEQGLPGLPGPPGLPGI
GKPGFPGPKGDRMGGVPGALGPRGEKGIPIGAPGIGGPPGEPGLPGIPGMGPPGAIIGFPGKGEIGVIG
PQGGPPGKGEPLQGFPKPGFLGEVGGPMRGLPGPIGPKGEAGQKGVPLPGVPLGLGPKGEPGIPGD
QGLQGPPGIPGIGGSPGIPGPPGIPGPKGEPGLPGPPGPGIGKPGVAGLHGPPGKPGALGPQQPGLPG
PPGPPGPPGPPAVMPPTPPPQGEYLPDMGLGIDGVKPPHAYGAKKGNNGPAYEMPAFTAELTAPFPPVG
APVKFNKLLYNGRQNYNPQTGIFTCAPGVYFYAHVHCKGGNVVVALFKNNEPVMYTYDEYKKGFLDQA
SGSAVLLLLRPGDRVFLQMPSEQAAGLYAGQYVHSSFSGYLLYPM
```

TRTRPLE - GFP Tag - V

Restriction Sites: SgfI-MluI

Cloning Scheme:



ACCN: NM_001850

ORF Size: 2232 bp

OTI Disclaimer: The molecular sequence of this clone aligns with the gene accession number as a point of reference only. However, individual transcript sequences of the same gene can differ through naturally occurring variations (e.g. polymorphisms), each with its own valid existence. This clone is substantially in agreement with the reference, but a complete review of all prevailing variants is recommended prior to use. [More info](#)

OTI Annotation: This clone was engineered to express the complete ORF with an expression tag. Expression varies depending on the nature of the gene.

Components: The ORF clone is ion-exchange column purified and shipped in a 2D barcoded Matrix tube containing 10ug of transfection-ready, dried plasmid DNA (reconstitute with 100 ul of water).

Reconstitution Method:

1. Centrifuge at 5,000xg for 5min.
2. Carefully open the tube and add 100ul of sterile water to dissolve the DNA.
3. Close the tube and incubate for 10 minutes at room temperature.
4. Briefly vortex the tube and then do a quick spin (less than 5000xg) to concentrate the liquid at the bottom.
5. Store the suspended plasmid at -20°C. The DNA is stable for at least one year from date of shipping when stored at -20°C.

RefSeq: [NM_001850.3](#), [NP_001841.2](#)

RefSeq Size: 2676 bp

RefSeq ORF: 2235 bp

Locus ID: 1295

UniProt ID: [P27658](#)

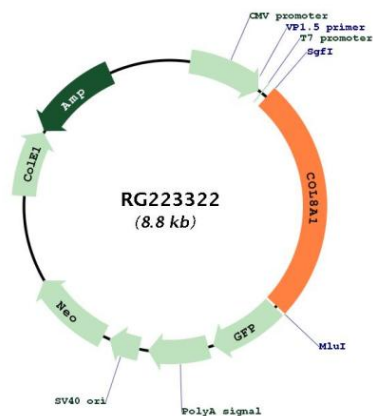
Cytogenetics: 3q12.1

Domains: C1Q, Collagen

Protein Families: Druggable Genome

Gene Summary: This gene encodes one of the two alpha chains of type VIII collagen. The gene product is a short chain collagen and a major component of the basement membrane of the corneal endothelium. The type VIII collagen fibril can be either a homo- or a heterotrimer. Alternatively spliced transcript variants encoding the same protein have been observed. [provided by RefSeq, Dec 2011]

Product images:



Circular map for RG223322