

Product datasheet for **RG223307**

MAP3K15 (NM_001001671) Human Tagged ORF Clone

Product data:

Product Type:	Expression Plasmids
Product Name:	MAP3K15 (NM_001001671) Human Tagged ORF Clone
Tag:	TurboGFP
Symbol:	MAP3K15
Synonyms:	ASK3; bA723P2.3
Mammalian Cell Selection:	Neomycin
Vector:	pCMV6-AC-GFP (PS100010)
E. coli Selection:	Ampicillin (100 ug/mL)



[View online »](#)

ORF Nucleotide
Sequence:

>RG223307 representing NM_001001671
Red=Cloning site Blue=ORF Green=Tags(s)

TTTTGTAATACGACTCACTATAGGGCGGCCGGAATTCGTCGACTGGATCCGGTACCGAGGAGATCTGCC
GCC**CGGATCGCC**

ATGGCATGTCTCACCCACAGAAATGAAACAGATGCACGAATGGAATTTTACAGCCTCTCCATAAAGGGA
ATAAGGCTGGAGTACAGTGGCACGATCTCGGCTACTGCAACCTCTGCCTCCAGGTTCAAGCGATTCTC
CTGCCTCAGCCTCCAGAGTAGCTGGGACTACAGCCTATCAAAGTTTGATGAAAGTGTTGTTTTCTTTAT
GTCCATGATAATTCTGATGACTTTCAAATCTACTTTTCCACCGAAGAGCAGTGCAGTAGATTTTTCTCTT
TGGTCAAAGAGATGATAACCAATACAGCAGGCAGTACGGTGGAGCTGGAGGGAGAGACCGATGGAGACAC
CTTGGAGTATGAGTATGACCATGATGCAAATGGTGAAGAGTTGTCTTGGGGAAAGGCACGTATGGGATT
GTGTATGTGGCCGAGATCTGAGCAATCAAGTGCGAATAGCCATCAAAGAAATCCCGGAGAGAGATAGCA
GGTATTCTCAGCCTCTGCACGAGGAGATAGCCCTGCACAAGTACCTTAAGCACCGCAATATCGTTCAGTA
CCTGGGCTCTGTTTCAGAGAACGGCTACATTAAGATATTTATGGAGCAGGTGCCTGGAGGAAGCCTTTCT
GCTCTTCTGCGATCCAAATGGGGCCGATGAAGGAACCGACAATCAAGTTTTACACCAAACAGATCCTGG
AGGGCCTTAAGTATCTTCATGAAAACAGATCGTGCACAGAGACATAAAGGGCGATAATGTTCTGGTGAA
CACCTACAGCGGAGTGGTAAAACTCCGATTTTGAACCTCGAAACGTCTTGGGGTGTGAACCCCTGC
ACAGAGACTTTTACTGGCACCTGCAGTACATGGCACCTGAGATAATTGACCAAGGGCCTCGCGGATATG
GTGCCCCAGCCGATATCTGGTCCCTGGGCTGCACCATCATTGAGATGGCCACCAGCAAGCCTCCGTTCCA
TGAGCTTGGTGAAGCCGAGCCAGCCATGTTCAAAGTGGGCATGTTAAGATCCACCCTGAGATCCAGAA
GCCCTTTCAGCTGAAGCCGAGCCTTCAATTTATCCTGTTTCGAGCCTGACCCCAAAACGTGCCACCA
GCTGTAGCTACTGAGAGAGGGTTTCTTAAGGCAGGTGAACAAGGGCAAGAAGAACCAGAAATGGCTTCAA
GCCCTCAGAAGGTCCCCGCGGTGTCGTCCTGGCCCTGCCACACAGGGAGAGCCCATGGCCACCAGCAGC
AGCGAGCACGGCTCTGTCTCCCCAGACTCCGACGCCAGCCTGACGCACTCTTTGAGAGGACCCGGGCGC
CCAGGCACCACCTTGGCCACCTCCTCAGTGTCCAGACGAGAGCTCAGCCTTGAAGACCCGGGCTTGGC
CTCGTCCCCGAGGACAGGGACCAGGGCCTCTCCTGCTACGCAAGGACAGTGAAGCGCCGTGCCATCCTG
TACAAAATCCTCTGGGAGGAGCAGAACCAGGTGGCTTCCAACCTGCAGGAGTGTGTGGCCAGAGTTCCG
AAGAGTTGCATCTCTCAGTTGGACATCAAGCAAATCATTGGGATCCTGAGGGACTTCATCCGCTCCCC
AGAGCACCGGTGATGGCGACCACAATATCAAAGCTCAAGGTGGACCTGGACTTTGACAGCTCGTCCATC
AGTCAGATTCACCTGGTGTGTTCCGATTTCCAGGATGCCGTAATAAAATTTTGAGGAACCACTTAATTA
GGCCCCACTGGATGTTCCGATGGACAACATCATCCGCCGAGCGGTGCAGGCCGCGGTACCATTCTCAT
CCCAGAGCTCCGAGCCCACTTTGAGCCTACCTGTGAGACTGAAGGGGTAGATAAAGGACATGGATGAAGCG
GAAGAGGGCTATCCCCAGCCACCGGACCTGGCCAGGAGGCCAGCCCCACCAGCAGCACCTGAGCCTCC
AGCTGGGTGAGCTCAGACAGGAGACCAACAGACTTTTGAACACCTAGTTGAAAAAGAGAGAGATACCA
GAATCTTCTGCGGCAAACCTAGAACAGAAAATCAAGAATTGTATCACCTTCAGTTAAAATTAATCG
AATTGTATTACAGAGAACCAGCAGGCCCTACGGGCAGAGAACAGATAAAGAGCTTATAGACTGGTTGC
GGCTGCAAGGAGCTGATGCAAAGACAATTGAAAAGATTGTTGAAGAGGGTTATACACTTTCGGATATTCT
TAATGAGATCACTAAGGAAGATTAAGATACCTTCGACTACGGGGTGGTCTCCTCTGCAGACTCTGGAGT
CGGGTCTCCAGTACAGAAGGGCTCAGGAGGCCTCAGAAACCAAAGACAAGGCT

ACGCGTACGCGGCCGCTCGAG - GFP Tag - GTTTAA

Protein Sequence: >RG223307 representing NM_001001671
 Red=Cloning site Green=Tags(s)

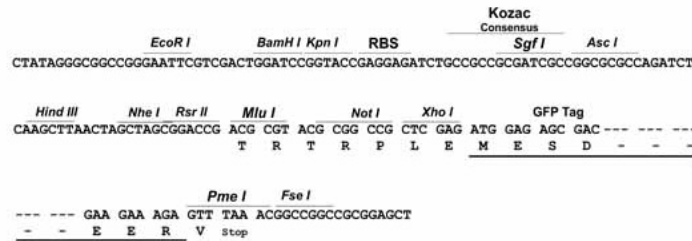
MACLTHRNETDARMEFYSLFHKGKAGVQWHDLGSLQPLPPRFKRFSCLSLQSSWDYSLSKFDERCCFLY
 VHDNSDDFQIYFSTEEQCSRFFSLVKEMITNTAGSTVELEGETDGDITLEYEDHDANGERVVLGKGTYGI
 VYAGRDLNQNVRIAIKEIPERDSRYSQPLHEEIALHKYLKHRNIVQYLGVSSENGYIKIFMEQVPGGSL
 ALLRSKWGPMKEPTIKFYTKQILEGLKYLHENQIVHRDIKGDNLVNTYSGVVKISDFGTSKRLAGVNPC
 TETFTGTLQYMAPEIIDQGPRGYGAPADIWSLGCIIEMATSKPPFHELGEPAAMFKVGMFKIHPEIPE
 ALSAEARAFILSCFEPDPHKRATTAELLREGFLRQVNGKKNRIAFKPSEGPRGVVLAALPTQGEPMATSS
 SEHGSVSPDSDAQPDALFERTRAPRHHLGHLSSVPDESSALEDRGLASSPEDRDQGLFLLRKDSERRAIL
 YKILWEEQNQVASNLEQCVASSEELHLSVGHKQIIGILRDFIRSPHRVMATTISKLVLDLDFDSSSI
 SQIHLVLFQDAVNKILRNHLIRPHWMFAMDNIIRRAVQAAVTILPELRAHFPTCETEGVDKDMDEA
 EEGYPPATGPGQEAQPHQQHLSLQGLRQETNRLLEHLVEKEREYQNLRLRQTLEQKQELYHLQLKLS
 NCITENPAGPYGQRTDKELIDWLRQLQADAKTIEKIVEEGYTLSDILNEITKEDLRYLRGLLCRLWS
 AVSQYRRAQEASETKDKA

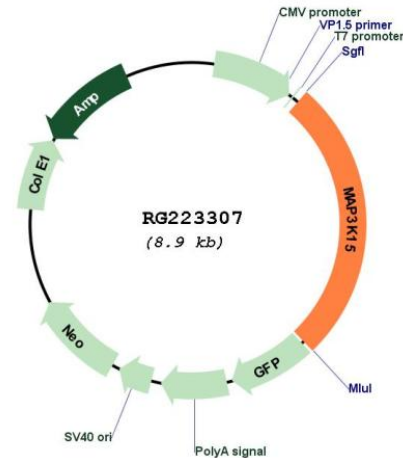
TRTRPLE - GFP Tag - V

Restriction Sites: SgfI-MluI

Cloning Scheme:

Cloning sites used for ORF Shuttling:



Plasmid Map:


ACCN: NM_001001671

ORF Size: 2364 bp

OTI Disclaimer: The molecular sequence of this clone aligns with the gene accession number as a point of reference only. However, individual transcript sequences of the same gene can differ through naturally occurring variations (e.g. polymorphisms), each with its own valid existence. This clone is substantially in agreement with the reference, but a complete review of all prevailing variants is recommended prior to use. [More info](#)

OTI Annotation: This clone was engineered to express the complete ORF with an expression tag. Expression varies depending on the nature of the gene.

Components: The ORF clone is ion-exchange column purified and shipped in a 2D barcoded Matrix tube containing 10ug of transfection-ready, dried plasmid DNA (reconstitute with 100 ul of water).

Reconstitution Method:

1. Centrifuge at 5,000xg for 5min.
2. Carefully open the tube and add 100ul of sterile water to dissolve the DNA.
3. Close the tube and incubate for 10 minutes at room temperature.
4. Briefly vortex the tube and then do a quick spin (less than 5000xg) to concentrate the liquid at the bottom.
5. Store the suspended plasmid at -20°C. The DNA is stable for at least one year from date of shipping when stored at -20°C.

RefSeq: [NM_001001671.2](#)

RefSeq Size: 4633 bp

RefSeq ORF: 3942 bp

Locus ID: 389840

UniProt ID: [Q6ZN16](#)

Cytogenetics: Xp22.12

Protein Families: Druggable Genome, Protein Kinase

Gene Summary: The protein encoded by this gene is a member of the mitogen-activated protein kinase (MAPK) family. These family members function in a protein kinase signal transduction cascade, where an activated MAPK kinase kinase (MAP3K) phosphorylates and activates a specific MAPK kinase (MAP2K), which then activates a specific MAPK. This MAP3K protein plays an essential role in apoptotic cell death triggered by cellular stresses. [provided by RefSeq, Jul 2010]