

Product datasheet for **RG223274**

Zfp219 (ZNF219) (NM_001101672) Human Tagged ORF Clone

Product data:

Product Type:	Expression Plasmids
Product Name:	Zfp219 (ZNF219) (NM_001101672) Human Tagged ORF Clone
Tag:	TurboGFP
Symbol:	ZNF219
Synonyms:	ZFP219
Mammalian Cell Selection:	Neomycin
Vector:	pCMV6-AC-GFP (PS100010)
E. coli Selection:	Ampicillin (100 ug/mL)



[View online »](#)

ORF Nucleotide Sequence:

>RG223274 representing NM_001101672
 Red=Cloning site Blue=ORF Green=Tags(s)

TTTTGTAATACGACTCACTATAGGGCGGCCGGAATTCGTCGACTGGATCCGGTACCGAGGAGATCTGCC
 GCC**CGGATCGCC**

ATGGAGGGCTCAGTCCCGCGCCCGAGCGGCCACTTAGCGCCGTCGCCCGGCTTTCGACGGCGAGC
 TGGATCTGCAGCGATACTCCAACGGGCCAGCCGTGAGCGCAGGGTCGCTCGGGATGGGAGCGGTGAGCTG
 GTCTGAGAGTCGTGCAGGCGAACGGCGCTTCCCCTGCCCTGTATGCGGGAAGCGCTTCCGCTTCAACTCT
 ATCCTTGTCTTGCACCTGCGGGCGCACCCAGGAGCCAGGCCCTCCAGTGCCCTCACTGCGGCCACCGCG
 CGGCGCAGCGGGCTCTGCTGCGCTCGCACCTGCGCACACACCAGCCCAGCGCCACGTAGTCTGCTGC
 ACGCTGTTGCTGGAGTTGGAAGAGCGCGCTACTACGCGAGGCCCGACTGGGGAGAGCCGAAGCTCA
 GGGGGCATGCAGGCCACCCCTGCCACTGAGGGTCTGGCGCGGCCCGAGGCTCCTTCATCGTCCGCCCTCC
 GTTGCCCTACTGCAAAGCAAGTTTCGACCTCGGGGAGCGCGAACGCCACCTGCACATCCTGCATAG
 GCCCTGGAAGTGGGCCGTGTGCAGTTTCGCTCCAGCCAGGAGGAGGAGCTGCTGCACCACGCCTGACG
 GCCACAGGGGCTCCCGAGCGTCCCCTGGCGGCCACCTCCGCTGCGCCTCCGCCTCAGCCTCAGCCTCAGC
 CTCCACCCAGCCGAACCCAGATCAGTCCCCAGCCGGAGCCGGAGCCGGAGCCGAACGTGAGGCAAC
 CCCGACCCAGCTCCTGCCGCTCCCGAGGAGCCCCAGCGCTCCGGAGTTCCGCTGCCAAGTGTGCGGC
 CAGAGCTTTACACAGTCTTGTTTCTCAAGGGCCACATGCGTAAGCACAAGGCTCCTTCGATCATGCGT
 GTCCGGTGTGCGGCCGCTGCTTCAAGGAGCCCTGGTTCCTTAAGAACCACATGAAGGTGCACGCCAGCAA
 GCTGGGCCACTGCGTCCCCGGGGCTGCCTCCGGGCTGCCCGCGCCCCAGCCTCCTGACCTCGGC
 CTGCTGGCCTATGAGCCGTTGGGCCAGCGCTCCTTTGGCCCCGGCTCCACCCCGCCGAGCGCCGTG
 AGCCCCGAGCCTTTGGGCTACCTGAGCTGCGAGCTGGCGAGGGCCGGCCCAACGGCGAGGGTGTGA
 GCCCGGTCCCGGCCGACGCTTCGGAGGCTTCCGCCCGCTGTCTCTGCTCTCCCGGCCCGGGCTCGCCGG
 CACCGTGCAGGAGCCTGAGGAAGAAGAGGAGGTGGTGGAGGCCGAGGAGGAAACCTGGGCCCGGGCA
 GGTCTGCTGGGCTCTCTGGCTTCCCTGCACCCGCGCCCGGGTGGAGGACCGGGCACTCTGCCTCTGCTGC
 TGGGGCCAGGCAAGATCGACCGCCACGCAGGAAGAGAAATGGGCTGTTGGTTGGAGGGACCCGGCCTGAA
 GGGGGCCGGGGCCACCGCAAGGATTGTCTTTCTGCGGAAAATCTTCCGCTCAGCACATCACCTCA
 AAGTGCATCTGCGAGTGCACACAGGCGAGCGGCCCTACAAGTGTCCGCACTGCGACTACGCGGGCACCCA
 GTCCGGCTCGCTCAAGTATCACCTACAGCGCCACCACCGGAGCAGAGGAGCGGGCCGGCCCCGGGCCA
 CCCCCGAGCCACCGCTCCTTCCAGCGGGGTTCCGGCCCGCAATCTGGAGCCAAGCCGTCTCCGACG
 CTGCGACCTGGTGGAGGGCGCCTCAAGTCCCCGGCCTCCTTCTAGCGGTGCTGGCCGGGGTCCCGTCCG
 GAAGCCCGCCAGCCCTGGGAGGACCTGCGCAACGGGCGAGGCGGTGAGGCCGAACCCCTGGACCTGTCC
 TTGCGGGCAGGGCCGGGAGGCGAGGCGGGCTGGGGGTGCCCTCCACCGCTGCCTCTTCTGCCGTTTCG
 CCACTGGAGCCCCAGAGCTCATGGCCTTGACCTTCAAGTGCACCACAGCCCGCGGGCTAGGGGCCGCCG
 GCCACCCAGGCTGACGCGTCCCCGCCCTATGCCCGAGTACCATCAGGAGAGACCCTCCAGTCCCTTCG
 CAGGAAGGGGAGGAGGGCTCCGGCTGTCCAGACCCGGAGAGGCAGGGCTGGGGGGCAAGAACGG

AG**CGGACCG**ACGCGTACGCGGCCGCTCGAG - GFP Tag - GTTTAA

Protein Sequence: >RG223274 representing NM_001101672
 Red=Cloning site Green=Tags(s)

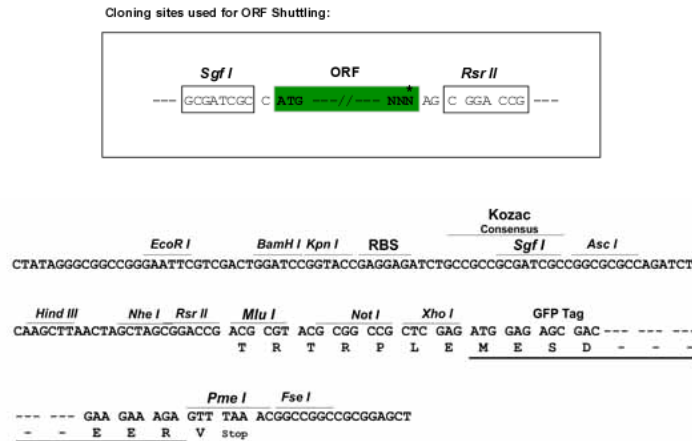
MEGSRPRAPSGHLAPSPPAFDGELDLQRYSNPVAVSAGSLGMGAVSWSES RAGERRFPCPVCGKRFRFNS
 ILALHLRAHPGAQAFQCPHCGHRAAQRALLRSHLRTHQPERPRSPAARLLELEERALLREARLGRARSS
 GGMQATPATEGLARPQAPSSSAFRCPYCKGKFR TSAERERHLHILHRPWKCGLCSFGSSQEELLHHSLT
 AHGAPERLAATS AAPPQPQPQPQPPEPRSVQPEPEPEPEREATPTPAPAAPEEPPAPPEFRCQVCG
 QSFTQSWFLKGHMRKHKASFHDHACPVCGRCFKEPWFLKNHMKVHASKLGPLRAPGPASGPAPAPQPPDLG
 LLAYEPLGPALLLAPAPTPAERREPPSLLGYLSLRAGEGRPNGEAEPGGRSFGGFRPLSSALPARARR
 HRAEEPEEEEEVVEAEEETWARGRSLGSLASLHPRPGEGPGHSASAAGAQRSTATQEENGLLVGGTRPE
 GGRGATGKDCPFCKGSAHHLKVHLRVHTGERPYKCPHCDYAGTQSGSLKYHLQRHREQRSAGGPGP
 PPEPPPSQRGSAPQSGAKPSPQATWVEGASSRPPSSGAGPGSRRKPASPGRTLNRNGRGEAEPLDLS
 LRAGPGGEAGPGGALHRCLFCPFATGAPELMALHLQVHHSRRARGRRPPQADASPPYARVPSGETPPSPS
 QEGEEGSLSRPGEAGLGGQER

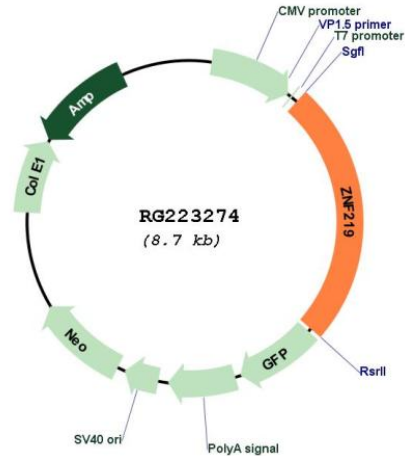
SGP TRRRLE - GFP Tag - V

Restriction Sites:

SgfI-RsrII

Cloning Scheme:



Plasmid Map:


ACCN: NM_001101672

ORF Size: 2166 bp

OTI Disclaimer: The molecular sequence of this clone aligns with the gene accession number as a point of reference only. However, individual transcript sequences of the same gene can differ through naturally occurring variations (e.g. polymorphisms), each with its own valid existence. This clone is substantially in agreement with the reference, but a complete review of all prevailing variants is recommended prior to use. [More info](#)

OTI Annotation: This clone was engineered to express the complete ORF with an expression tag. Expression varies depending on the nature of the gene.

Components: The ORF clone is ion-exchange column purified and shipped in a 2D barcoded Matrix tube containing 10ug of transfection-ready, dried plasmid DNA (reconstitute with 100 ul of water).

Reconstitution Method:

1. Centrifuge at 5,000xg for 5min.
2. Carefully open the tube and add 100ul of sterile water to dissolve the DNA.
3. Close the tube and incubate for 10 minutes at room temperature.
4. Briefly vortex the tube and then do a quick spin (less than 5000xg) to concentrate the liquid at the bottom.
5. Store the suspended plasmid at -20°C. The DNA is stable for at least one year from date of shipping when stored at -20°C.

RefSeq: [NM_001101672.2](#)

RefSeq Size: 2964 bp

RefSeq ORF: 2169 bp

Locus ID: 51222

UniProt ID: [Q9P2Y4](#)

Cytogenetics: 14q11.2

Protein Families: Transcription Factors

Gene Summary: This gene is a member of the Kruppel-like zinc finger gene family. The encoded protein functions as a transcriptional repressor of the high mobility group nucleosome binding domain 1 protein, which is associated with transcriptionally active chromatin. [provided by RefSeq, Apr 2017]