

Product datasheet for **RG223258**

Matrin 3 (MATR3) (NM_018834) Human Tagged ORF Clone

Product data:

Product Type:	Expression Plasmids
Product Name:	Matrin 3 (MATR3) (NM_018834) Human Tagged ORF Clone
Tag:	TurboGFP
Symbol:	Matrin 3
Synonyms:	ALS21; MPD2; VCPDM
Mammalian Cell Selection:	Neomycin
Vector:	pCMV6-AC-GFP (PS100010)
E. coli Selection:	Ampicillin (100 ug/mL)



[View online »](#)

ORF Nucleotide Sequence:

>RG223258 representing NM_018834
 Red=Cloning site Blue=ORF Green=Tags(s)

TTTTGTAATACGACTCACTATAGGGCGGCCGGAATTCGTGACTGGATCCGGTACCGAGGAGATCTGCC
 GCC**CGGATCGCC**

ATGTCCAAGTCATTCCAGCAGTCATCTCTCAGTAGGGACTCACAGGGTCATGGGCGTGACCTGTCTGCGG
 CAGGAATAGGCCTTCTTGCTGCTGCTACCCAGTCTTTAAGTATGCCAGCATCTCTTGGAAGGATGAACCA
 GGGTACTGCACGCCTTGCTAGTTAATGAATCTTGGAATGAGTTCTTCATTGAATCAACAAGGAGCTCAT
 AGTGCAGTGTCTTCTGCTAGTACTTCTCCATAATTTGCAGTCTATATTTAACATTGGAAGTAGAGGTC
 CACTCCCTTTATCTTCTCAACACCGTGGAGATGCAGACCAGGCCAGTAACATTTTGGCCAGCTTTGGTCT
 GTCTGCTAGAGACTTAGATGAAGTGAAGTCTGTTATCCAGAGGACAAGATTACTCCTGAGAATTTGCCCAA
 ATCCTTCTACAGCTTAAAAGGAGGAGAAGTGAAGAAGGCCCTACCTTGAGTTATGGTAGAGATGGCAGAT
 CTGCTACACGGGAGCCACCATACAGAGTACCTAGGGATGATTGGGAAGAAAAAGGCACTTTAGAAGAGA
 TAGTTTTGATGATCGTGGTCTAGTCTCAACCCAGTGTGATTATGACCATGGAAGTCGTCTCAAGAA
 TCTGGTTATTATGACAGAATGGATTATGAAGATGACAGATTAAGAGATGGAGAAAGGTGTAGGGATGATT
 CTTTTTTGGTGAGACCTCGCATAACTATCATAAATTTGACAGTGAAGTATGAGAGAAATGGGACGTGGTCC
 TGGCCCTTACAAGAGAGATCTCTTTTGGAAAAAGAGAGGCGCTCCTCCAAGTAGCAATATTGAAGAC
 TTCCATGGACTCTTACCGAAGGGTTATCCCATCTGTGCTCTATATGTGATTTGCCAGTTCATTCTAATA
 AGGAGTGGAGTCAACATATCAATGGAGCAAGTCACAGTCGTGATGCCAGCTTCTTCTTGAATCTACCC
 AGAATGGAATCCTGACAATGATACAGGACACACAATGGGTGATCCATTCTGTTGCAGCAGTCTACAAAT
 CCAGCACAGGAATCTGGGACCTCCACCTCCCTCATTTTCATCTTGGGGGACCAGCAGTTGGACCAAGAG
 GAAATCTGGGTGCTGAAATGGAACCTGCAAGGACCTAGACACATGCAGAAAGCCAGATGGAAACTAG
 CAGAGTTGTTACATCATGGATTTTCAACGAGGAAAAAAGTTGAGATACCAGCTATTACAGCTGGTAGAA
 CCATTTGGAGTCAATTTCAATCATCTGATTCTAAATAAAATTAATGAGGCATTTATTGAAATGGCAACCA
 CAGAGGATGCTCAGGCCGAGTGGATTATTACACAACCACACCAGCGTTAGTATTTGGCAAGCCAGTGAG
 AGTTCAATTTATCCAGAAGTATAAAAGAATAAAGAAACCTGAAGGAAAGCCAGATCAGAAGTTTGATCAA
 AAGCAAGAGCTTGGACGTGTGATACATCTCAGCAATTTGCCGCTTCTGGCTATTCTGATAGTGTCTTTC
 TCAAGCTTGTGAGCCTTATGGGAAAAAAGAAATACATATTGATGAGGATGAAAAGTCAGGCTTTTAT
 TGAGATGGAGACAAGAGAAGATGCAATGGCAATGGTTGACCATTGTTGAAAAAGCCCTTTGGTTTCAG
 GGGAGATGTGTGAAGTTGACCTGTCTGAGAAATATAAAAACTGTTCTGAGGATTCCAAACAGAGGCA
 TTGATTTACTGAAAAAGATAAATCCCGAAAAAGATCTTACTCTCCAGATGGCAAAGAATCTCCAAGTGA
 TAAGAAATCCAAAAGTATGGTTCCAGAAAGACTGAGAGTTCAACCGAAGGTAAGAAACAAGAGAGAAG
 TCCGGTGAAGATGGTGAGAAAGACAAAAGGATGACCAGACAGAGCAGGAACCTAATATGCTTCTTGAAT
 CTGAAGATGAGCTACTTGTAGATGAAGAAGAAGCAGCAGCACTGCTAGAAAAGTGGCAGTTCAGTGGGAGA
 CGAGACCGATCTTGCTAATTTAGGTGATGTGGCTTCTGATGGGAAAAAGGAACCATCAGATAAAGCTGTG
 AAAAAAGATGGAAGTCTTCAGCAGCAGCAAAGAAAAAGCTTAAAAAGGTGGACAAGATCGAGGAACTTG
 ATCAAGAAAACGAAGCAGCGTTGGAAAAAGAAATGGAATTAATAATGAGGAAAACACAGAACCAGGTGCTGAATC
 TTCTGAGAACGCTGATGATCCCAACAAAGATACAAGTAAAAACGCAGATGGTCAAAGTATGAGAAACAAG
 GACGACTATACAATCCCAGATGAGTATAGAATTGGACCATATCAGCCCAATGTTCTCTGTTGATAGACT
 ATGTGATACCTAAAACAGGGTTTTACTGTAAAGCTGTGTTCACTCTTTTATACAAATGAAGAAGTTGCAAA
 GAATACTCATTGCAGCAGCCTTCTCATTATCAGAAATTAAGAAATTTCTGAATAAATTGGCAGAAGAA
 CGCAGACAGAAGAAGGAAACT

ACGGTACGCGGCCGCTCGAG - GFP Tag - GTTTAA

Protein Sequence: >RG223258 representing NM_018834
Red=Cloning site Green=Tags(s)

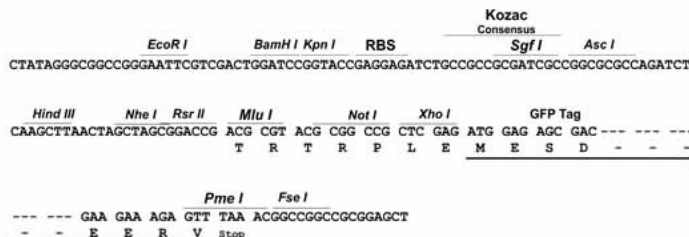
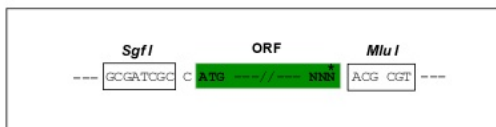
```
MSKSFQQSSLSRDSQGHGRDLSAAGIGLLAAATQSL SMPASLGRMNQGTARLASLMNLGMSSSLNQQGAH
SALSSASTSSHNLQSI FNI GSRGPLPLSSQHRGDADQASNILASFGLSARDLDEL SRYPEDKITPENLPQ
ILLQLKRRRTEEGPTLSYGRDGRSATREPPYRVPRDDWEEKRHFRRDSFDDRGPSLNPVLDYDHGSRSQE
SGYYDRMDYEDDRLRDGERCRDSSFGETSHNYHKFDSEYERMGRGPGPLQERSLFEKKRGAPPSSNIED
FHGLLPKGYPHLCSICDLPVHSNKEWSQHINGASHSRRCQLLEIYPEWNPNDTGHMTGDPFMLQQSTN
PAPGILGPPPSFHLGGPAVGPRGNLGAGNGNLQGPRHMQKGRVETSRVVHIMDFQRGKNLRYQLLQQLVE
PFGVISNHLILNKINEAFIEMATTEDAQAADVYYTTTPALVFGKPVRVHLSQKYKRIKKPEGKPDQKFDQ
KQELGRVIHLSNLP HSGYSDSAVLKLAEPYGKIKNYILMRMKSQAFIEMETREDAMAMVDHCLKKALWFQ
GRCVKVDLSEKYKLVLRIPNRGBIDLLKKDKSRKRSYSPDGKESPSDKKSKTDGSQKTESSTEGKEQEEK
SGEDGEKDTKDDQTEQEPNMLLESEDELLVDEEEAAALLESGSSVGDETDLANLGDVASDGKKEPSDKAV
KKDGSASAAA KKKLKKVDKIEELDQENEAAL ENGIKNEENTEPGAESSENADDPNKDTSENADGQSDENK
DDYTIPDEYRIGPYQPNVPVGI DYVIPKTGFYCKLCSLFYTNEEVAKNTHCSSLPHYQK LKKFLNKLAAE
RRQKKET
```

TRTRPLE - GFP Tag - V

Restriction Sites: Sgfl-MluI

Cloning Scheme:

Cloning sites used for ORF Shutting:



- ACCN:** NM_018834
- ORF Size:** 2541 bp
- OTI Disclaimer:** The molecular sequence of this clone aligns with the gene accession number as a point of reference only. However, individual transcript sequences of the same gene can differ through naturally occurring variations (e.g. polymorphisms), each with its own valid existence. This clone is substantially in agreement with the reference, but a complete review of all prevailing variants is recommended prior to use. [More info](#)
- OTI Annotation:** This clone was engineered to express the complete ORF with an expression tag. Expression varies depending on the nature of the gene.
- Components:** The ORF clone is ion-exchange column purified and shipped in a 2D barcoded Matrix tube containing 10ug of transfection-ready, dried plasmid DNA (reconstitute with 100 ul of water).

Reconstitution Method:

1. Centrifuge at 5,000xg for 5min.
2. Carefully open the tube and add 100ul of sterile water to dissolve the DNA.
3. Close the tube and incubate for 10 minutes at room temperature.
4. Briefly vortex the tube and then do a quick spin (less than 5000xg) to concentrate the liquid at the bottom.
5. Store the suspended plasmid at -20°C. The DNA is stable for at least one year from date of shipping when stored at -20°C.

RefSeq: [NM_018834.6](#)

RefSeq Size: 3921 bp

RefSeq ORF: 2544 bp

Locus ID: 9782

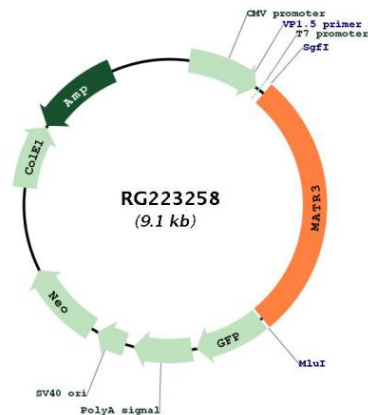
UniProt ID: [P43243](#)

Cytogenetics: 5q31.2

Domains: RRM, ZnF_U1

Gene Summary: This gene encodes a nuclear matrix protein, which is proposed to stabilize certain messenger RNA species. Mutations of this gene are associated with distal myopathy 2, which often includes vocal cord and pharyngeal weakness. Alternatively spliced transcript variants, including read-through transcripts composed of the upstream small nucleolar RNA host gene 4 (non-protein coding) and matrin 3 gene sequence, have been identified. Pseudogenes of this gene are located on chromosomes 1 and X. [provided by RefSeq, Aug 2013]

Product images:



Circular map for RG223258