

Product datasheet for **RG223255**

C10orf90 (NM_001004298) Human Tagged ORF Clone

Product data:

Product Type:	Expression Plasmids
Product Name:	C10orf90 (NM_001004298) Human Tagged ORF Clone
Tag:	TurboGFP
Symbol:	C10orf90
Synonyms:	bA422P15.2; FATS
Mammalian Cell Selection:	Neomycin
Vector:	pCMV6-AC-GFP (PS100010)
E. coli Selection:	Ampicillin (100 ug/mL)



[View online »](#)

ORF Nucleotide Sequence:

>RG223255 representing NM_001004298
 Red=Cloning site Blue=ORF Green=Tags(s)

TTTTGTAATACGACTCACTATAGGGCGGCCGGGAATTCGTCGACTGGATCCGGTACCGAGGAGATCTGCC
 GCC**GCGATCGCC**

ATGCTCAAACGTCTGGAGAAGGATTACGGGACAGCTACCACAGTAGAAGAGATCAAATTGCCCTTAAAA
 ATCTCCAGTCTGATGTCACAGAGGCAAAATCTGACTTCACCAAGGAGACCCTGGCATCACAAAACACAAA
 AATGATTTTCATCCATAGTCATCTCCAGATGATTGATGAGAATAAGTCAAGAGAAAAACAGGGCCTCTTG
 CCCCTACCGTGTGCCATTGCTCAGTCTCGTGCACATCACGCCAAGCAATCTCTGGCTAACCCGAGCGGAG
 TCAACATTCACAGAGCATTGCGTTACTTCCGGGCAGATTAGGAATCCCGGCACCCTGATGAGCGAGG
 ACCTGAGGCAGAGCTGCCGCCAAAGAGGAGAGACCCTGTGGGGGCCCCCGCAGAGGGTTTGCATCCATC
 ACCATCACGGCCAGACCGTGGGCCCCAGCCCGCCCTGGTGTGGGGGACTGCTGGGGACTCTCTGT
 GCCCAAGTGCAGGGCTGAGGACACACTGTTCCAGGCGCCCGGCTCTGGCCAATGGCGCCATCCAGG
 TCGGCATCAGAGATCTTTGCCCTGCACAGATTCTCCAGAAACAGCTCCGTGGTGGCGCTGAAGGTTCCC
 GAGGCCACACTGGGTTGTGTGAGAGACCAAGTACTGGGTACCCATGCAGACGACAAAGAGACCAGTT
 TTTCTCCAGACACCCACTGTCAGGAAAGACCCGCTGGTGTTCAGTTCCCTGTGTCCACCTCAGGGTGT
 TCAGCAGTGTCCAGATCAATCTATTACGTAGACAAGTCTCTCTCCGTCGCCATTGAGCCACCTCAAATT
 GCCAGCCCAAAATGCACAGATCCGTCCTGTGCTCAACCTCAATTGTAGTTCCACAGATTAACAGCAG
 ATGGAGTAGATGGCCTAGTGAACAGAGAGCCAATAAGCGAAGCCCTGAAGCAGGAGCTCCTGGAGGGAGA
 CCAGGACCTCGTAGGCCAGCGCTGGAACCCAGGTTTACAAGAAAGTCACTGAAGGAAACCCATCGTTG
 AGGCGGGTGCATTTGGGGACCGCGCTTGTCTTGGAGTGGTCTTTTCCATTGGAAAACACAGAATTGG
 CAAATGTGGGAGCTAACCAAGTCACTGTAAGAAAAGGGAAAAGGACCATACAACCTCATTGTCCAGCCAG
 CGATCATGCCAACCAACTGTCCATTACATTCCTGGCTGGAGTTACAGGGCAGTACACACAAAAGTATTT
 TCTGGAAGCAGCAAGAGGCAACAAGGAGAAGTATGTATGACTGTGTCTGCTCCTCCAGTGGAAACAGAAGC
 CCACTAGACATTTCTTCCCATTGGGATAGCTCTCCAAGCGATGACTGTCTGTCTAGAGACCTTTCTGA
 GCCCAGAGAGAGACGACATCAAAGCTTCTGAAACCCAGAATCCTTTTCTGGGTTTCTTTGCCCTTA
 CAAGATGTATGTGCATCTCTGCAGGAAGACAATGGTGTTCAGATAGAAAGCAAGTCCCCAAAGGAGATT
 ACACATGCTGTGACTTGGTTGTAATAAAGGAATGTAAGAAGAGTGAGGACCCACCACACCTGAGCC
 CTCCCAGCAGCACCTCGCCAGCACCCCGCATGGAGCAGGGAGCCCTGGCCTGTCCGAAGACTGTTCT
 GAGTCTCAGCAAACGCTGCAAGATCTTTGACCTTGAAGAAGCACTGGAAGTTCGTAAGCCTCAGTTCA
 TTTCTCGCTCACAAAGACGGCTGAAGAAGCTTGAACACATGGTCCAGCAGGAAAGCCAGCGGAAGGA
 GGACCTGAGGCAGAAGCAGAGCCTCCTTCCATCCGCACCAGCAAGAAGCAGTTCACGATTTCCCATCCT
 CTGAGTGATAACTTGTCAAACCCAAAGAACGGTGCATTTTCCAGAGAAGGAGATGCATATGCGATCTAAGA
 GAATCTATGATAACTTGGCGGAAGTTAAAAAGAAAAAAGAAGCAAAAGGAAAAGGGTGTCTTACAAAG
 TAACAGACTCCGTGCCGAAGTCTTCAAAAAGCAATTACTGGACCAGCTCCTTCAAAGGAATGCGGTC

AG**CGGACCG**ACGCGTACGCGGCCGCTCGAG - GFP Tag - GTTTAA

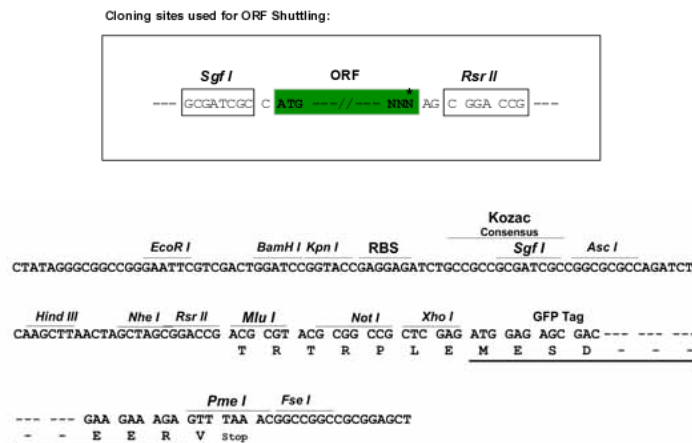
Protein Sequence: >RG223255 representing NM_001004298
Red=Cloning site Green=Tags(s)

MLKLSGEGLRDSYHSRRDQIALKNLQSDVTEAKSDFTKETLASQNTKMISSIVISQMIDENKSNRENRASL
 PLPCAIAQSRAHHAKQSLANRSGVNIHRAFALLPGRLGIPASDERGPEAELPPKEERPCGGPRRGFASI
 TITARRVGP PARALVWGTAGDSLCPKCAEDTLFQAPPALANGAHPGRHQRSFACTEFSRNSVVRKVP
 EAHTGLCERRKYVWTHADDKETSFSPDTPLSGKSPLVFSSCVHLRVSQQCPDSIYYVDKSLSVPIEPPQI
 ASPKMHRSVLSLNLNCCSHRLTADGVDGLVNREPISEALKQELLEGDQDLVGQRWNPGLQESHLKETPSL
 RRVHLGTGACPWSGSFLENTELANVGANQVTVRKGEKDHTTHCHASDHANQLSIHIPGWSYRAVHTKVF
 SGSSKRQQGEVCMTVSAPPVEQKPTRHFLPIGDSSPSDDCLSRDLSEPTERRHQSF LKPRILFPGFLCPL
 QDVCASLQEDNGVQIESKFKGDYTCDDL VVKIKECKKSEDPTTPEPSPAAPSPAPRDGAGSPGLSEDCS
 ESQQTPARSLTLQEALEVRKQPFISRSQERLKKLEHMQRKAQRKEDLRQKQSLLPRTSKKQFTIPHP
 LSDNLFKPKERCISEKEMHMRKRIYDNLPEVKKKKKEEQRKRVILQSNRLRAEVFKKQLLDQLLQRNAV

SGPTRRRLE - GFP Tag - V

Restriction Sites: SgfI-RsrII

Cloning Scheme:



ACCN: NM_001004298

ORF Size: 2097 bp

OTI Disclaimer: The molecular sequence of this clone aligns with the gene accession number as a point of reference only. However, individual transcript sequences of the same gene can differ through naturally occurring variations (e.g. polymorphisms), each with its own valid existence. This clone is substantially in agreement with the reference, but a complete review of all prevailing variants is recommended prior to use. [More info](#)

OTI Annotation: This clone was engineered to express the complete ORF with an expression tag. Expression varies depending on the nature of the gene.

Components: The ORF clone is ion-exchange column purified and shipped in a 2D barcoded Matrix tube containing 10ug of transfection-ready, dried plasmid DNA (reconstitute with 100 ul of water).

Reconstitution Method:

1. Centrifuge at 5,000xg for 5min.
2. Carefully open the tube and add 100ul of sterile water to dissolve the DNA.
3. Close the tube and incubate for 10 minutes at room temperature.
4. Briefly vortex the tube and then do a quick spin (less than 5000xg) to concentrate the liquid at the bottom.
5. Store the suspended plasmid at -20°C. The DNA is stable for at least one year from date of shipping when stored at -20°C.

RefSeq: [NM_001004298.3](#)

RefSeq Size: 3097 bp

RefSeq ORF: 2100 bp

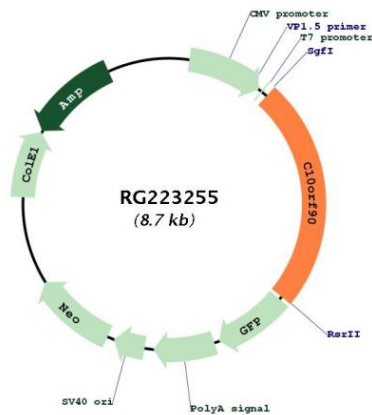
Locus ID: 118611

UniProt ID: [Q96M02](#)

Cytogenetics: 10q26.2

Gene Summary: Tumor suppressor that is required to sustain G2/M checkpoint after DNA damage. Acts as a p53/TP53 activator by inhibiting MDM2 binding to p53/TP53 and stimulating non-proteolytic polyubiquitination of p53/TP53. Exhibits ubiquitin ligase (E3) activity and assemble ubiquitin polymers through 'Lys-11'- (K11-), 'Lys-29'- (K29-) and 'Lys-63'- (K63)-linkages, independently of the ubiquitin-conjugating enzyme (E2). Promotes p53/TP53-dependent transcription of CDKN1A/p21, leading to robust checkpoint response. Mediates CDKN1A/p21 protein stability in a ubiquitin-independent manner. Interacts with HDAC1 and prevents binding of HDAC1 to CDKN1A/p21 and facilitates the acetylation and stabilization of CDKN1A/p21 (By similarity). May have a role in the assembly of primary cilia (Probable).[UniProtKB/Swiss-Prot Function]

Product images:



Circular map for RG223255