

Product datasheet for **RG223198**

UNC5D (NM_080872) Human Tagged ORF Clone

Product data:

Product Type:	Expression Plasmids
Product Name:	UNC5D (NM_080872) Human Tagged ORF Clone
Tag:	TurboGFP
Symbol:	UNC5D
Synonyms:	PRO34692; Unc5h4
Mammalian Cell Selection:	Neomycin
Vector:	pCMV6-AC-GFP (PS100010)
E. coli Selection:	Ampicillin (100 ug/mL)



[View online »](#)

ORF Nucleotide Sequence:

>RG223198 representing NM_080872
 Red=Cloning site Blue=ORF Green=Tags(s)

TTTTGTAATACGACTCACTATAGGGCGGCCGGAATTCGTCGACTGGATCCGGTACCGAGGAGATCTGCC
 GCC**CGGATCGCC**

ATGATCCTGGTGTAGTTAAAGCTCTCAGTGATGTCTGTGCTGGGACTTCCGGGTTCTGTGGACTTTT
 CCTCCCAAACCTTACCAGGAACTGACAATGGCGAAGCCCTTCCCGAATCCATCCCATCAGCTCCTGGGAC
 ACTGCCTCATTTATAGAGGAGCCAGATGATGCTTATATTATCAAGAGCAACCCTATTGCACTCAGGTGC
 AAAGCGAGGCCAGCCATGCAGATATTCTTCAAATGCAACGGCGAGTGGGTCCATCAGAACGAGCAGCTCT
 CTGAAGAGACTCTGGACGAGAGCTCAGGTTTGAAGGTCCGCGAAGTGTTCATCAATGTTACTAGGCAACA
 GGTGGAGGACTTCCATGGGCCCGAGGACTATTGGTGCCAGTGTGTGGCGTGGAGCCACCTGGGTACCTCC
 AAGAGCAGGAAGGCTCTGTGCGCATAGCCTATTTACGGAAAACTTTGAACAAGACCCACAAGGAAGGG
 AAGTTCCATTGAAGGCATGATTGTACTGCACTGCCGCCACCAGAGGGAGTCCCTGCTGCCGAGGTGGA
 ATGGCTGAAAAATGAAGAGCCCATTGACTCTGAACAAGACGAGAACATTGACACCAGGGCTGACCATAAC
 CTGATCATCAGGCAGGCACGGCTCTCGGACTCAGGAAATTACACCTGCATGGCAGCCAACATCGTGGCTA
 AGAGGAGAAGCCTGTCCGCCACTGTTGTGGTCTACGTGAATGGAGGCTGGTCTTCCCTGGACAGAGTGGTC
 AGCCTGCAATGTTGCTGTGGTAGAGGATGGCAGAAAACGTTCCCGGACCTGCACCAACCCAGCTCCTCTC
 AATGGTGGGGCCTTTTGTGAGGGAATGTGAGTGCAGAAAATAACCTGCACTTCTCTTTGTCTGTGGATG
 GGAGCTGGGAAGTGTGGAGCGAATGGTCCGTCTGCAGTCCAGAGTGTGAACATTTGCGGATCCGGGAGTG
 CACAGCACCCCGGAGAAATGGGGGCAAAATCTGTGAAGGTCTAAGCCAGGAATCTGAAAAGTGCACA
 GATGGTCTTTGCATCCTAGATAAAAAACCTCTTCATGAAATAAAACCCCAAGCATTGAGAATGCCAGCG
 ACATTGCTTTGACTCGGGCTTGGGTGCTGCCGTGCGGCGTTGCAGTCTGGTCACTTGGTGTCCACCT
 TTACAGACGGAGCCAGAGTACTATGGCGTGGAGTCTTACTGACTCTTCTGCATTGACAGGTGGCTTCCAG
 ACCTTCAACTTCAAAACAGTCCGTCAAGGTAACCTCCCTGCTCCTGAATTCTGCCATGCAGCCAGATCTGA
 CAGTGAGCCGGACATACAGCGGACCCATCTGTCTGCAGGACCCTCTGGACAAGGAGCTCATGACAGAGTC
 CTCACTCTTAAACCTTTGTCGGACATCAAAGTAAAAGTCCAGAGCTCGTTCATGGTTTCCCTGGGAGTG
 TCTGAGAGAGCTGAGTACCACGGCAAGAATCATTCCAGGACTTTTCCCATGGAAACAACCACAGCTTTA
 GTACAATGCATCCAGAAATAAAATGCCCTACATCCAAAATCTGTCACTCTCCCAACAAGGACAGAAGT
 GAGGACAAGTGGTCTTTGGCCATTTAGGGGGCGCTTAGTAATGCCAAATACAGGGGTGAGCTTACTC
 ATACCACACGGTCCATCCAGAGGAGAATTCTGGGAGATTTATATGTCCATCAACCAAGGTGAACCCA
 GCCTCCAGTCAGATGGCTCTGAGGTGCTCCTGAGTCTGAAGTCACTGTGGTCCCTCCAGACATGATCGT
 CACCACCTCCCTTTCATTGACCATCCCGCACTGTGCAGATGTCAGTTCTGAGCATTGGAATATCCATTTA
 AGGAAGAGGACACAGCAGGGCAAATGGGAGGAAGTGTGATGTCAGTGGAAAGTGAATCTACATCCTGTTACT
 GCCTTTTGGACCCCTTTGCGTGTGATGTCTCCTGGACAGCTTTGGGACCTATGCGCTCACTGGAGAGCC
 AATCACAGACTGTGCCGTGAAGCAACTGAAGGTGGCGTTTTTGGCTGCATGTCTGTAACCTCCCTGGAT
 TACAACCTGAGAGTTTACTGTGTGGACAATACCCTTGTGCATTTCAAGGAAGTGGTTTCAGATGAAAGGC
 ATCAAGGTGGACAGCTCCTGGAAGAACCAAAATGCTGCATTTCAAGGGAATACCTTTAGTCTTCAGAT
 TTCTGTCTTGTATTTCCCTTCTCTGGAGAATTAACCAATCACTGCCTGCCAGGAAGTCCCGTTT
 TCCCGCGTGTGGTGCAGTAACCGGCAGCCCTGCACTGTGCCCTTCCCTGGAGCGTTATACGCCCACTA
 CCACCCAGCTGTCTGCAAAATCTGCATTCGGCAGCTCAAAGGCCATGAACAGATCCTCCAAGTGCAGAC
 ATCAATCCTAGAGAGTGAACGAGAAACCATCACTTTCTTCGCACAAGAGGACAGCACTTTCCCTGCACAG
 ACTGGCCCAAAGCCTTCAAAATTCCTACTCCATCAGACAGCGGATTTGTGCTACATTTGATACCCCA
 ATGCCAAAGGCAAGGACTGGCAGATGTTAGCACAGAAAAACAGCATCAACAGGAATTTATCTTATTTGCG
 TACACAAAGTAGCCCATCTGCTGTCATTTGAACCTGTGGGAAGCTCGTCATCAGCATGATGGTGTCTT
 GACTCCCTGGCCTGTGCCCTTGAAGAGATTGGGAGGACACACGAAACTCTCAAACATTTCAGAATCCC
 AGCTTGATGAAGCCGACTTCAACTACAGCAGGCAAAATGGACTC

ACGCGTACGCGGCCGCTCGAG - GFP Tag - GTTTAA

Protein Sequence: >RG223198 representing NM_080872
 Red=Cloning site Green=Tags(s)

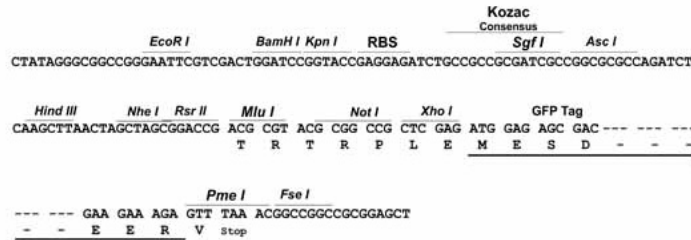
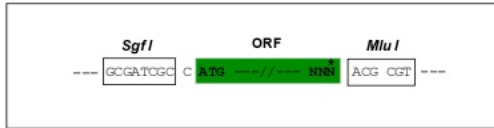
MILVLVKALSDVCAGTSGFLLDFSSQTSPTDNGEALPESIPSAPGTLPHFIEEPDDAYIIKSNPIALRC
 KARPAMQIFFKCNGEVWHQNEHVSEETLDESSGLKVREVFINVTRQQVEDFHGPEDYWCQCVAWSHLGT
 KSRKASVRIAYLRKNFEQDPQGREVPIEGMIVLHCRPPEGVPAAEVEWLKNEPIDSEQDENIDTRADHN
 LIIRQARLSDSGNYTCMAANIVAKRRSLSATVVVYVNGWSSWTEWSACNVRCGRGWQKRSTCTNPAPL
 NGGAFCEGMSVQKITCTSLCPVDGSWEVWSEWSVCSPECEHLRIRECTAPPRNGGKFCEGLSQESENCT
 DGLCILDKKPLHEIKPQSIENASDIALYSGLGAAVAVAVLVIGVTLYRRSQSDYGVVDIDSSALTGGFQ
 TFNFKTVRQGNLLLLNSAMQPDLTVSRTYSGPICLQDPLDKELMTESSLFNPLSDIKVKVQSSFMVSLGV
 SERAEYHGKNSRTPPHGNNHSFSTMHPRNKMPYIQNLSSLPTRELRTTGTFVGHGGRLVMPNTGVSLL
 IPHGAIPPEENSWEIYMSINQGEPSLQSDGSEVLLSPEVTCGPPDMIVTTPFALTIPHCADVSSEHWNHL
 RKRTQQGKWEVMSVEDESTSCYCLLDPFACHVLLDSFGTYALTGEPITDCAVKQLKVAVFGCMSCNSLD
 YNLRVYCVDNTPCAFQEVVSDERHQGGQLLEPKLLHFKGNTFSLQISVLDIPPFLWRKIPFTACQEVFP
 SRVWCSNRQPLHCAFSLERYTPTTTQLSCKICIRQLKGHEQILQVQTSILESERETITFFAQEDSTFPAQ
 TGPKAFKIPYSIRQRICATFDTPNAGKDWQMLAQKNSINRNLSTYFATQSSPSAVILNLEWARHQHDGDL
 DSLACALEEIGRTHTKLSNISESQLDEADFNYSRQNGL

TRTRPLE - GFP Tag - V

Restriction Sites: SgfI-MluI

Cloning Scheme:

Cloning sites used for ORF Shuttling:

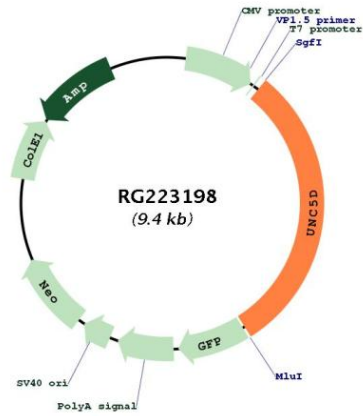


ACCN: NM_080872

ORF Size: 2844 bp

OTI Disclaimer:	The molecular sequence of this clone aligns with the gene accession number as a point of reference only. However, individual transcript sequences of the same gene can differ through naturally occurring variations (e.g. polymorphisms), each with its own valid existence. This clone is substantially in agreement with the reference, but a complete review of all prevailing variants is recommended prior to use. More info
OTI Annotation:	This clone was engineered to express the complete ORF with an expression tag. Expression varies depending on the nature of the gene.
Components:	The ORF clone is ion-exchange column purified and shipped in a 2D barcoded Matrix tube containing 10ug of transfection-ready, dried plasmid DNA (reconstitute with 100 ul of water).
Reconstitution Method:	<ol style="list-style-type: none"> 1. Centrifuge at 5,000xg for 5min. 2. Carefully open the tube and add 100ul of sterile water to dissolve the DNA. 3. Close the tube and incubate for 10 minutes at room temperature. 4. Briefly vortex the tube and then do a quick spin (less than 5000xg) to concentrate the liquid at the bottom. 5. Store the suspended plasmid at -20°C. The DNA is stable for at least one year from date of shipping when stored at -20°C.
RefSeq:	NM_080872.1 , NP_543148.1
RefSeq Size:	7002 bp
RefSeq ORF:	2862 bp
Locus ID:	137970
UniProt ID:	Q6UXZ4
Cytogenetics:	8p12
Protein Families:	Druggable Genome
Protein Pathways:	Axon guidance
Gene Summary:	Receptor for the netrin NTN4 that promotes neuronal cell survival (By similarity). Plays a role in cell-cell adhesion and cell guidance. Receptor for netrin involved in cell migration. Plays a role in axon guidance by mediating axon repulsion of neuronal growth cones in the developing nervous system upon ligand binding (By similarity). May play a role in apoptosis in response to DNA damage (PubMed:24691657). It also acts as a dependence receptor required for apoptosis induction when not associated with netrin ligand (PubMed:24519068). Mediates cell-cell adhesion via its interaction with FLRT3 on an adjacent cell (By similarity). [UniProtKB/Swiss-Prot Function]

Product images:



Circular map for RG223198