

Product datasheet for **RG223169**

CTNND1 (NM_001085468) Human Tagged ORF Clone

Product data:

Product Type:	Expression Plasmids
Product Name:	CTNND1 (NM_001085468) Human Tagged ORF Clone
Tag:	TurboGFP
Symbol:	CTNND1
Synonyms:	BCDS2; CAS; CTNND; p120; p120(CAS); p120(CTN); P120CAS; P120CTN
Mammalian Cell Selection:	Neomycin
Vector:	pCMV6-AC-GFP (PS100010)
E. coli Selection:	Ampicillin (100 ug/mL)



[View online »](#)

ORF Nucleotide Sequence:

>RG223169 representing NM_001085468
 Red=Cloning site Blue=ORF Green=Tags(s)

TTTTGTAATACGACTCACTATAGGGCGGCCGGGAATTCGTCGACTGGATCCGGTACCGAGGAGATCTGCC
 GCC**GCGATCGCC**

ATGCAGGAGCCGGGCGAGATTGTGGAGACCTACACGGAGGAGGATCCTGAGGGAGCCATGTCTGTAGTCT
 CTGTGGAGACCTCAGATGATGGGACCACTCGGCCACAGAGACCACGGTCAAGAAAGTAGTGAAGACTGT
 GACAACACGGACAGTACAGCCAGTCGCTATGGGACCAGACGGGTTGCCTGTGGATGCTTCATCAGTTTCT
 AACAACTATATCCAGACTTTGGGTCTGATTTCCGCAAGAATGGCAATGGGGGACCTGGTCCCTATGTGG
 GGCAAGCTGGCACTGCTACCTTCTTAGGAACCTCCACTACCTCCTGATGGTTATAGTCGCCACTATGA
 AGATGGTTATCCAGGTGGCAGTGATAACTATGGCAGTCTGTCCCAGGATGACCCGATTGAGGAGCGGTAT
 AGGCCAGCATGGAAGGCTACCGGGCACCTAGTAGACAGGATGTGTATGGGCCCCAACCCAGGTTCCGG
 TAGGTGGGAGCAGCGTGGATCTGCATCGCTTTCATCCAGAGCCTTATGGGCTAGAGGATGACCAGCGTAG
 TATGGGCTATGATGACCTGGATTATGGTATGATGTCTGATTATGGCACTGCCCGTCGGACTGGGACACCC
 TCTGACCCTCGTCGGCGCCTCAGGAGCTATGAAGACATGATTGGTGAGGAGGTGCCATCGGATCAATACT
 ACTGGGCTCCTTTGGCCAGCATGAGCGAGGAAGTTTAGCAAGCTTGGATAGCCTGCGCAAGGAGGGCC
 TCCACCTCCTAATTGGAGACAGCCAGAGCTGCCAGAGGTGATCGCCATGCTTGGATTCCGCTTGGATGCT
 GTCAAGTCCAATGCAGCTGCATACCTGCAACACTTATGCTACCGCAATGACAAGGTGAAGACTGACGTGC
 GGAAGCTCAAGGGCATCCAGTACTGGTGGGATTGTTAGACCATCCAAAAAGGAAGTGCACCTTGGAGC
 CTGTGGAGCTCTCAAGAATATCTCTTTGGACGTGACCAGGATAACAAGATTGCCATAAAAACTGTGAT
 GGTGTGCCTGCCCTTGTGCGATTGCTTCGAAAGGCTCGTGATATGGACCTTACTGAAGTTATTACCGGAA
 CCCTGTGGAATCTTTCATCCCATGACTCAATCAAAATGGAGATTGTGGACCATGCATGCCTGACCTTAC
 AGATGAAGTGATCATTCTCATTCTGGTTGGGAGCGGGAACCTAATGAAGACTGTAAAGCCACGCCATATT
 GAGTGGGAATCGGTGCTACCAACACAGCTGGCTGCCTTAGGAATGTAAGCTCAGAGAGGAGTGAAGCTC
 GCCGAAACTTCGGGAATGTGATGGTTTAGTTGATGCCCTCATTTCATTGTTTCAGGCTGAGATTGGGCA
 GAAGGATTCAGACAGCAAGCTTGTAGAGAACTGTGTTGCCTTCTCGGAACTTATCATATCAAGTTCAC
 CGGGAGATCCACAGGCAGAGCGTTACCAAGAGGCAGCTCCCAATGTTGCCAACAACTACTGGCCACATG
 CTGCCAGTTGCTTTGGGGCAAGAAGGGCAAAGGGAAAAAACCTATAGAGGATCCAGCAAACGATACAGT
 GGATTTCCCTAAAAGAACGAGTCCAGCTCGAGGCTATGAGCTCTATTTCAGCCAGAGGTGGTTCGGATA
 TACATCTCACTTCTTAAGGAGAGCAAGACTCCTGCCATCTAGAAGCCTCAGCTGGAGCTATCCAGAACT
 TGTGTGCTGGGCCTGGACGTATGGTCGATACATCCGCTCTGCTCTGCGTCAAGAGAAGGCTCTTTCTGC
 CATAGCTGACCTCCTGACTAATGAACATGAACGGTGGTAAAAGCTGCATCTGGAGCACTGAGAAACCTG
 GCTGTGGATGCTCGAACAAAGAATTAATTGGTAAACATGCTATTCTAAGTGGTAAAGAACTGCCCAG
 GAGGACAGCAGAACTCCTCTTGGAAATTTCTCTGAGGACACTGTCATCTCTATTTTGAACACTATCAACGA
 GGTTATCGCTGAGAACTTGGAGGCTGCCAAAAAGCTTCGAGAGACACAGGGTATTGAGAAGCTGGTGTG
 ATCAACAAATCAGGGAACCGCTCAGAAAAAGAAGTTCGAGCAGCAGCACTTGATTACAGACAATCTGGG
 GATATAAGGAACTGCGGAAGCCACTGGAAAAAGAAGGATGGAAGAAATCAGACTTTCAGGTGAATCTAAA
 CAATGCTTCCCGAAGCCAGAGCAGTCAATCATATGATGATAGTACTCTCCCTCTCATTGACCGGAACCAA
 AAATCAGATAAAGAACTGATCGGGAAGAAATTCAGATGAGCAATATGGGATCAAACACAAAATCACTAG
 ATAACAACTATTCCACACCAAATGAGAGAGGAGACCACAATAGAACACTGGATCGATCGGGGGATCTAGG
 CGACATGGAGCCATTGAAGGGAACAACCCCTTGATGCAGAAGATT

ACCGTACGCGGCCGCTCGAG – GFP Tag – GTTTAA

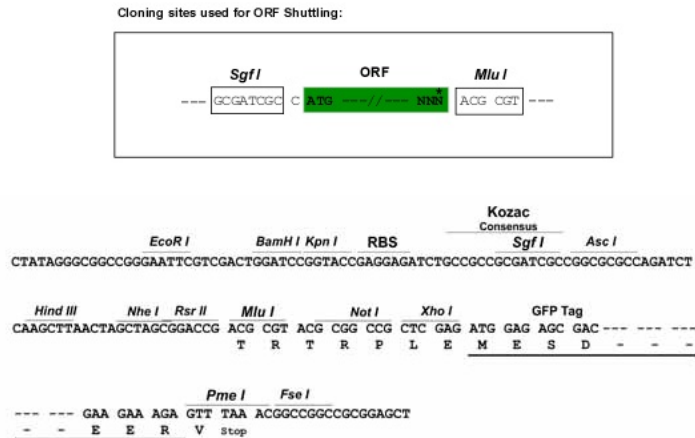
Protein Sequence: >RG223169 representing NM_001085468
Red=Cloning site Green=Tags(s)

MQEPGQIVETYTEEDPEGAMSVSVSVETSDDGTTTRRTETT VKKVVKVTVTTRTVQPVAMGPDGLPVDASSVS
NNYIQT LGRDFRKNNGGPGPYVGQAGTATLPRNFHYPPDGYSRHYEDGYPGGSDNYGSLSRVTRIEERY
RPSMEGYRAPS RQDVYGPQPQVRVGGSSVDLHRFHPEPYGLEDDQRSMGYDDL DYGMMSDYGTARRTGTP
SDPRRRLRSYEDMIGEEVPSDQYYWAPLAQHERGSLASLDSL RKGPPPPNWRQPELPEVIAMLGFR L DA
VKSNAAYLQHL CYRNDKVKTDVRKLGIPVLVGLLDHPKKEVHLGACGALKNISFGRDQDNKIAIKNCD
GVPALVRLLRKARDMDL TEVITGTLWNLSSHDSIKMEIVDHALHALTDEVIIPHSGWEREPNEDCKPRHI
EWESVL TNTAGCLRNVSSERSEARRKLRECDGLVDALIFIVQAEIGQKSDSKLVENCVCLLRNLSYQVH
REIPQAERYQE AAPNVANNTGPHAASCFGAKKGGKPKIEDPANDTVDFPKRTSPARGYELLFQPEVVRI
YISLLKESKTPAILEASAGAIQNL CAGRWTYGRYIRSALRQEKALSAIADLLTNEHERVVKAASGALRNL
AVDARNKELIGKHAIPNLVKNLPGGQQNSSWNFSEDTVISILNTINEVIAENLEAAKKLRETQGIEKLV
INKSGNRSEKEVRAAALVLQTIWGYKELRKPLEKEGWKKSDFQVNLNNASRSQSSHSYDDSTLPLIDRNQ
KSDKKPDREEIQMSNMGSNKSLDNNYSTPNERGDHNRTLDRSGDLGDMEPLKGTTPLMQKI

TRTRPLE - GFP Tag - V

Chromatograms: https://cdn.origene.com/chromatograms/ja1821_f03.zip

Restriction Sites: SgfI-MluI

Cloning Scheme:


ACCN: NM_001085468

ORF Size: 2496 bp

OTI Disclaimer: The molecular sequence of this clone aligns with the gene accession number as a point of reference only. However, individual transcript sequences of the same gene can differ through naturally occurring variations (e.g. polymorphisms), each with its own valid existence. This clone is substantially in agreement with the reference, but a complete review of all prevailing variants is recommended prior to use. [More info](#)

OTI Annotation: This clone was engineered to express the complete ORF with an expression tag. Expression varies depending on the nature of the gene.

Components: The ORF clone is ion-exchange column purified and shipped in a 2D barcoded Matrix tube containing 10ug of transfection-ready, dried plasmid DNA (reconstitute with 100 ul of water).

Reconstitution Method:

1. Centrifuge at 5,000xg for 5min.
2. Carefully open the tube and add 100ul of sterile water to dissolve the DNA.
3. Close the tube and incubate for 10 minutes at room temperature.
4. Briefly vortex the tube and then do a quick spin (less than 5000xg) to concentrate the liquid at the bottom.
5. Store the suspended plasmid at -20°C. The DNA is stable for at least one year from date of shipping when stored at -20°C.

RefSeq: [NM_001085468.1](#), [NP_001078937.1](#)

RefSeq Size: 5777 bp

RefSeq ORF: 2499 bp

Locus ID: 1500

UniProt ID: [O60716](#)

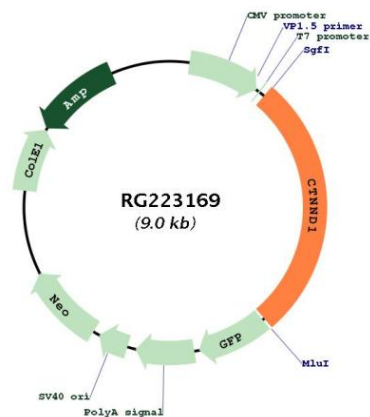
Cytogenetics: 11q12.1

Protein Families: Druggable Genome

Protein Pathways: Adherens junction, Leukocyte transendothelial migration

Gene Summary: This gene encodes a member of the Armadillo protein family, which function in adhesion between cells and signal transduction. Multiple translation initiation codons and alternative splicing result in many different isoforms being translated. Not all of the full-length nature of the described transcript variants have been determined. Read-through transcription also exists between this gene and the neighboring upstream thioredoxin-related transmembrane protein 2 (TMX2) gene. [provided by RefSeq, Dec 2010]

Product images:



Circular map for RG223169