

Product datasheet for **RG223164**

CILP2 (NM_153221) Human Tagged ORF Clone

Product data:

Product Type:	Expression Plasmids
Product Name:	CILP2 (NM_153221) Human Tagged ORF Clone
Tag:	TurboGFP
Symbol:	CILP2
Synonyms:	CLIP-2
Mammalian Cell Selection:	Neomycin
Vector:	pCMV6-AC-GFP (PS100010)
E. coli Selection:	Ampicillin (100 ug/mL)
ORF Nucleotide Sequence:	>RG223164 representing NM_153221 Red=Cloning site Blue=ORF Green=Tags(s)

TTTTGTAATACGACTCACTATAGGGCGGCCGGAATTCGTCGACTGGATCCGGTACCGAGGAGATCTGCC
GCC**CGATCGCC**

ATGGCGTCGCTGCTGCCACTGCTCTGTCTCTGTGTGTCGTCGCTGCGCACCTGGCGGGGGCCGAGACGCCA
CCCCACCGAGGAGCCAATGGCGACTGCACTGGGCCTGGAAGACGGTCCGTGTACACCGCCAGCCCTC
ACCAGCCCTGGAGACTGGGAAGAGGCCAGCGAGTGGACGTCTGGTTCAACGTGGACCACCCCGGAGGC
GACGGCGACTTCGAGAGCCTGGCTGCCATCCGCTTCTACTACGGGCCAGCGCGCTGTCCCGCGACCCG
TGGCGCTGGAAGCGCGCACACGACTGGGCCCTGCCGTCGCGCTCGGGGAGCGGTGCACTTGAACCC
CAGCGCGGCTTCTGGTGCCTCAACCGGAGCAACCGCGTGGCCGCCGCTGCTCCAACCTACCACGTGCGC
TCCGCTGCCACTAGAAGCCTCGTGGGCGCGTGGGGCCCGTGGGGTCCCTGCTCGGGGAGCTGTGGGC
CAGGCCGTCGCTTGCGCCGCCCACTGCCAAGCCCCGCTGGGGATGCGTGTCCCGGGCGTCTCTGGA
GGCGCAGAAGTGCCTGCGGCCCTCGGTGTCCAGGGTGCAGCCTTGACACCTGTGAATGCCCGGACCACATC
CTCCTGGGCTCGGTGGTCAACCCATCTGGGCAACCACTGCTAGGAGCCAGGGTCTCCCTGCGAGACCAGC
CTGGCACTGTGGCCACCAGCGATGCTCACGGAACCTTCCGGGTGCCTGGTGTCTGTGCTGACAGCCGCGC
CAACATCAGGGCCAGATGGATGGCTTCTGTCAGGGGAGGCCAGGCCAAGCCATGAGTCCCGAGTGGCAG
GTGGTCAACATCATCCTTGATAAGTTGGAGAAGCCGTAACCTGGTGAACACCCCTGAGTCCCGAGTGGCAG
AGGCTGGCCAGAATGTGACTTTCTGCTGCAAAGCCTCCGGGACCCCATGCCAAGAAATACTCCTGGTT
CCACAATGGGACCCTGCTGGACAGGCGAGCTCATGGGTACGGGGCCACCTGGAGCTGCGGGGACTGCGC
CCAGACCAGGCTGGCATCTACCACTGCAAGGCATGGAATGAGGCGGGTGCCTGCGCTCGGGCACTGCC
GGCTCACTGTAAGTGGCCAGCCAGCCAGCCTGCGACCCCGGCCCGAGAGTACCTGATCAAGCTCCC
TGAGGACTGTGGTCAGCCAGGTAGTGGCCCTGCCTACCTGGATGTGGCCCTGTGCCGACACCCGCTGC
CCCAGCCTGGCAGGCTCCAGCCCCGCTGCGGGGACGCCAGCTCCCGCTGCTGCTGTGCGCCGCTCTGG
AGAGAAGGGAGATCACTGCCCTGGCTACGTCCTCCAGTGAAGGTGGTGGCAGAGTGTGGCTGCCAGAA
GTGCTGCCCCCTCGGGGCTGGTCCGGGGCCGTTGTGGCTGCTGACTCCGGGAGCCGCTACGCTTC



[View online >](#)

GCCAGGATTCTGCTGGGCCAGGAGCCCATCGGCTTACCAGGCGACTTTACCATTGAGGTGC
CGCCCTCCACCCAGCGGCTGGTGGTGACTTTTGTGGACCCAGCGGTGAGTTTCATGGACGCTGTCCGGGT
CTTGCTTTTGTATCCTCGAGGTGCCGGCGTGTACCACGAGGTCAAGGCCATGCGGAAGAAAGCCCGGTC
ATTTTACATACCAGCCAGAGCAACACGATCCCCCTGGGCGAGCTGGAAGATGAGGCGCCCTGGGCGAGC
TGGTCTGCCTTCTGGCGCTTCCGCGAGAGCCGACGGCAAACCTACTCGGGGCTGTGGAGGCCGGGT
GACGTCGAGTGGACCCCGAGACCTCACCTCGGCGGCGTCTGCCCCAGTGACCTGCGCTTCGTGGACAGC
GACGGCGAGCTGGCTCCACTGCGCACCTACGGCATGTTCTCCGTGGACCTCCGTGCGCCCGGCTCCGCGG
AGCAGCTGCAGGTGGGGCCGGTGGCCGTGCGGGTGGCCGCCAGCCAGATCCACATGCCAGGCCACGTGGA
GGCCCTCAAGCTGTGGTGCCTGAACCCCGAGACCGGGTGTGGGAGGAGGAGAGCGGCTTCGCGCGGAG
GGGTCTCGGGCCCCGGGTGCGCCGGGAGGAGCGGTCTTCTGGTGGGCAACGTGGAGATCCGGGAGC
GGCGCTGTTCAATCTGGACGTGCCTGAGCGCCCGCTGCTTCGTGAAGGTGCGCGCTACGCCAACGA
CAAGTTCACCCAGCGAGCAGGTGGAGGGCGTGGTGGTACGCTGGTCAATCTGGAGCCCGGCCCGG
TTCTCCGCCAACCCCGTGCCTGGGGCCGCTTTGACAGCGCGGTACCCGGCCCAATGGCGCTGCCTCC
CCGCTTCTGCGACGCCACAGGCCAGACGCTACACCGCCCTGGTACCCGCCACCTGGGCGGCGAGGA
GCTGGAGCCGGCCCTTCTTGGCCCGCCACTCCCGGCCACCGTGGGCGTACCCAGCCCTACCTGGAC
AGGCTGGGTACCGTCCGACGGACCACGACGATCCCGCTTCAAGCGTAACGGTTCGCGATCAACCTCG
CCAAGCCAGGCCAGGTACCCCGCGAGGCCAATGGGCCTGTGTACCCGTGGCGCAGCTGCGGGAATG
CCAGGGGGCCCCGGTACTGCCAGCCACTTCCGCTTCGCCAGGGTGGAGGCGGACAAGTACGAGTACAAC
GTGGTCCCCTTCCGAGAGGGCACACCTGCCTCCTGGACTGGCGATCTCCTGGCCTGGTGGCCCAACCCGC
AGGAGTCCGGGCTGCTTCTCAAGGTGAAGATCCAGGGTCCCCAGGAGTATATGGTCCGCTCCACAA
CGCAGGGGGCAGCCACCCACGCACCCCGCGCCAGCTCTACGGACTTCGGGATGCCCGGAGTGTGCGAGAC
CCCGAGCGTCCGGGCACCTCGGCAGCCTGCGTGGAGTTCAAGTGCAGCGGGATGCTGTTCCGACAGCGGC
AGGTGGACAGGACGCTGGTGACCATTATGCCCCAGGGCAGCTGCCGGCGGTGGCCGTCAACGGACTCCT
TCGGGATTACCTGACCCGGCACCCCCACCGGTGCCCGCGGAGGACCCAGCTGCCTTCTCCATGCTGGCC
CCCCTAGACCCTCTGGGCCACAATATGGCGTCTACACTGTCACTGACCAGAGCCACGCTTGGCCAAGG
AGATCGCCATTGGCCGCTGCTTTGATGGTCTCTGACGGCTTCTCCAGAGAGATGAAGGCTGATGCCGG
CACAGCCGTCACCTTCCAGTGCCGGGAGCCACCGCCGGACGACCCAGCCTTCCAGAGGCTGCTGGAG
TCCCCGGCGACAGCACTTGGTGACATCCGAGGGAGATGAGCGAGGCGGCGCAGGCACAGGCCCGGGCT
CAGGTCCCCTCCGACCCCGGGGTAGGGTCCGGCAG

ACGCGTACGCGGCCGCTCGAG – GFP Tag – GTTTAA

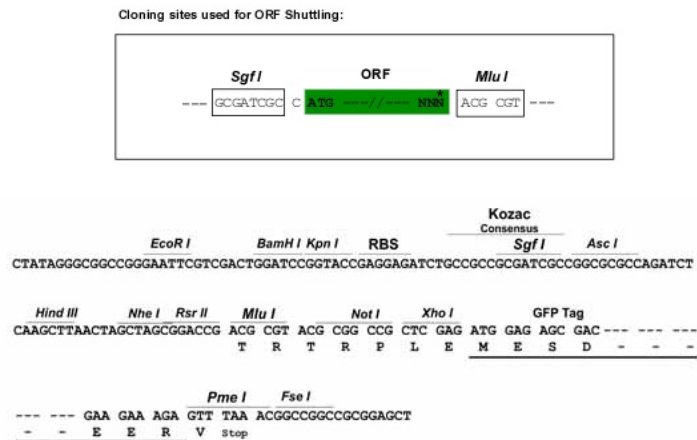
Protein Sequence: >RG223164 representing NM_153221
Red=Cloning site Green=Tags(s)

```
MASLLPLLCLCVAAHLGARDATPTEEMATALGLERRSVYTGQPSPALEDWEEASEWTSWFNVDHPGG
DGFESLAAIRFYYPARVCPRLALEARTTDWALPSAVGERVHLNPTRGFWCLNREQPRGRCSNYHVR
FRCPLEASWGAWGPWGPCSGSCGPRRLRRRHCPSPAGDACPGRPLEAQKCVRPRCPGCSLDTCECPDHI
LLGSVVTSPSQPLLGARVSLRDQPGTVATSDAHGTFRVPGVCADSRANIRAQMDGF SAGEAQAQANGSIS
VVTIILDKLEKPYLVKHPESRVREAGQNVTFCKASGTPMPKKYSWFHNGTLLDRRAHGYGAHLELRGLR
PDQAGIYHCKAWNEAGAVRSGTARLTVLAPGQPACDPRPREYL IKLPEDCGQPGSGPAYLVDGLCPDTRC
PSLAGSSPRCGDASSRCCSVRRLERREIHCPGYVLPVKVVAECGCQKCLPPRGLVRGRVVAADSGEPLRF
ARILLGQEPIGFTAYQGDFTEIVPPSTQRLVVT FVDPSGEFMDAVRVL PFDPRGAGVYHEVKAMRKKAPV
ILHTSQSNTIPLGELEDEAPL GELVLP SGAFRRADGKPYSGPVEARVTFVDPRDL TSAASAPSDLRFVDS
DGELAPLRTYGMFSVDLRAPGSAEQLQVGPVAVRVAASQIHMPGHVEALKLWLNPETGLWEEESGFRE
GSSGPRVRREERVFLVGNVEIRERRLFNLDVPERRRCFVKVRAYANDKFTPSEQVEGVVTVLVNLEPGPG
FSANPRAWGRFDSAVTGPNGACLP AFCDADRPDAYTALVTATLGGEELEPAPSLPRPLPATVGVTPQPYLD
RLGYRRTDHDDPAFKRNGFRINLAKPRPGDPAEANGPVYPWRSLRECQGPVTA SHFRFARVEADKYEYN
VVPFREGTPASWTGDL LAWPNPQEFRA CFLKVKIQGPQ EYMVRSHNAGGSHPRTRGQL YGLRDARSVRD
PERPGTSAACVEFKCSGMLFDQRQVDR LVTIMPQGSCRRAVAVNGLLRDYL TRHPPPVAEDPAAFSMLA
PLDPLGHNYGVYTVTDQSPRLAKEIAIGRCFDGSSDGF SREMKADAGTAVTFQCREPPAGRPSL FQRLL
SPATALGDIRREMSEAAQAQARASGLRTRRGRVRQ
```

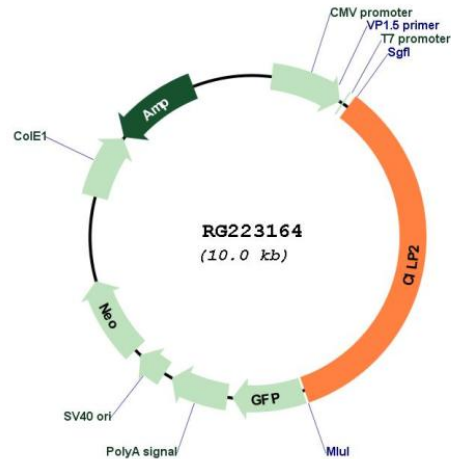
TRTRPLE - GFP Tag - V

Restriction Sites: SgfI-MluI

Cloning Scheme:



Plasmid Map:



ACCN: NM_153221

ORF Size: 3468 bp

OTI Disclaimer: Due to the inherent nature of this plasmid, standard methods to replicate additional amounts of DNA in *E. coli* are highly likely to result in mutations and/or rearrangements. Therefore, OriGene does not guarantee the capability to replicate this plasmid DNA. Additional amounts of DNA can be purchased from OriGene with batch-specific, full-sequence verification at a reduced cost. Please contact our customer care team at custsupport@origene.com or by calling 301.340.3188 option 3 for pricing and delivery.

The molecular sequence of this clone aligns with the gene accession number as a point of reference only. However, individual transcript sequences of the same gene can differ through naturally occurring variations (e.g. polymorphisms), each with its own valid existence. This clone is substantially in agreement with the reference, but a complete review of all prevailing variants is recommended prior to use. [More info](#)

OTI Annotation: This clone was engineered to express the complete ORF with an expression tag. Expression varies depending on the nature of the gene.

Components: The ORF clone is ion-exchange column purified and shipped in a 2D barcoded Matrix tube containing 10ug of transfection-ready, dried plasmid DNA (reconstitute with 100 ul of water).

Reconstitution Method:

1. Centrifuge at 5,000xg for 5min.
2. Carefully open the tube and add 100ul of sterile water to dissolve the DNA.
3. Close the tube and incubate for 10 minutes at room temperature.
4. Briefly vortex the tube and then do a quick spin (less than 5000xg) to concentrate the liquid at the bottom.
5. Store the suspended plasmid at -20°C. The DNA is stable for at least one year from date of shipping when stored at -20°C.

RefSeq: [NM_153221.1](#), [NP_694953.1](#)
RefSeq Size: 3602 bp
RefSeq ORF: 3471 bp
Locus ID: 148113
UniProt ID: [Q8IUL8](#)
Cytogenetics: 19p13.11
Gene Summary: May play a role in cartilage scaffolding.[UniProtKB/Swiss-Prot Function]