

Product datasheet for **RG223158**

RIF1 (NM_018151) Human Tagged ORF Clone

Product data:

Product Type:	Expression Plasmids
Product Name:	RIF1 (NM_018151) Human Tagged ORF Clone
Tag:	TurboGFP
Symbol:	RIF1
Mammalian Cell Selection:	Neomycin
Vector:	pCMV6-AC-GFP (PS100010)
E. coli Selection:	Ampicillin (100 ug/mL)
ORF Nucleotide Sequence:	>RG223158 representing NM_018151 Red=Cloning site Blue=ORF Green=Tags(s)

TTTTGTAATACGACTCACTATAGGGCGGCCGGAATTCGTCGACTGGATCCGGTACCGAGGAGATCTGCC
GCC**CGATCGCC**

ATGACGGCCAGGGGTCAGAGCCCCCTCGCGCCGCTGTTGGAGACTTTGGAAGACCCTTCTGCCTCCCATG
GAGGGCAGACTGACGCTTACCTGACTCTGACCAGTCGTATGACTGGAGAAGAAGGAAAAGAAGTAATTAC
AGAAATTGAGAAAAAATTCCTCGGCTGTACAAAGTTTTAAAGACTCACATTTCCAGTCAAACCTCGGAG
CTGAGTAGTGCTGCTCTACAAGCCCTGGGGTTTTGCTTATATAATCCCAAATACCTCAGAATTATCAG
AGGCAAATGCTCTAGAATTGCTTCAAATTTGAATGATACCATAAGAATTCAGACAAAAATGACGTAC
TAGAGCACTTTGGGTGATATCTAAGCAGACATTTCCCTCTGAAGTGTTGGCAAAATGGTATCCAGTATA
ATTGATTCATTAGAAATACTGTTTAACAAAGGAGAGACGCATTCTGCTGTTGTTGATTTTGAAGCATTAA
ATGTTATCGTAAGGCTAATTGAACAAGCCCAATTCAAATGGGAGAAGAGGCAGTGAGGTGGGCAAACT
GGTCATACCTTTAGTGGTTCATTCAGCACAAAAGGTACATTTGCGGGGAGCAACTGCTCTGGAGATGGGA
ATGCCATTATTGCTTCAGAAACAGCAAGAAATAGCATCTATTACGGAGCAGCTTATGACTACTAAATTA
TCTCAGAACTTCAGAAGCTATTTATGAGTAAAAATGAGACTTACGTGTTAAAATTATGGCCTTTGTTTGT
CAAACACTTTGGAAGACCTTGCATCGAAGTGGGAGTTTCATCAATCTCTCTTGCAACTAGAAGAACTT
GGATTTCTGAGTGAGCACCCATGATTAAGAAAGATAGCTTTTATTGCTTGAAGAGTTTAAATAGATAATT
TTGCTTTAAATCCAGATATACTATGTAGTGCAAAAAGACTCAAGTTGTTAATGCAGCCTTTGAGTCCAT
CCATGTGAGAACAGAACTCTAGCATTAAACAAACTAGAAGTCTGGTGGTATTTACTGATGAGACTTGGA
CCTCATCTTCTGCTAATTTTGAACAGGTTTGTGTGCCTCTGATTCAAAGTACAATAAGCATTGATTCTA
ATGCCTCACCTCAGGGCAATTCGTGTCATGTAGCTACATCTCCAGGTTTAAATCCTATGACTCCTGTACA
CAAAGTGCTTCTCCCCGTACGGAGCCCCGGGAACTCCCCGAATGAACCTGAGTTCGAATTTAGGTGGA
ATGGCCACAATCCCATCCATTCACTTTTGGGACTTGAATGTTGCTTCATTTCTGTTGGGTCCAGAAG
CCTTGAGTTTTGCTAAGCAAAAATAACTTGTGCTGAGCTTAGAGCCATTGGAACATCCGTTAATCAGCAG
CCCTTCTTTTTTTTCAAACATGCAAAACACTTATCACTGCTGTTTCATGATAGCTTTGTTGCAGTTGGA
AAAGATGCCCCCGATGTGGTTGTCAAGTCTATCTGGAAGGAGCTAATTAGCTTGGTGAAGTCAGTTACTG
AATCAGGTAACAAAAAGAGAAACCAGGTTCTGAAGTTTTGACTCTCTTATAAAGTCTTTGGAAGCAT



[View online >](#)

AGTAAAGTCTGAAGTATTTCTGTATCAAAAACGCTGGTCCATGGAATTACAATTAAGGACTTCTC
 CAGAAAGTATTAGGTTACCAGCATATCAGGTTGCTAATATGGATATTCTTAATGGAAGTCCAGCTTTGT
 TCTTAATTCATTAATTTTCAACAATTTCTTGGAAATGGTGTATCAGATGAAAGTTCTTTCTCAGTTT
 GGAATCACTTGTAGGCTGTGTTCTTTCTGGTCCAACCTTACCAGTCTTCCAGTACTCAGTTTAAAT
 GTTATTAATCAAAATGCAAAGCAGTTGGAAAATAAGGAGCATCTCTGGAAAATGTGGAGTGTATAGTCA
 CCCCATTAAGTGAATTGATTAATCAGACCAATGAAGTAAATCAAGGTGATGCCTTAGAACATAATTTTAG
 TGCCATCTAGGTGCATTGACTTACCAGTAAACCACATTTTTTTCAGAACAGAGATTTCCAGTGGCCACC
 ATGAAGACTTTGCTTAGAACTTGGTTCAGAAATTATATAGAGCATTGCTCGTTGTGCTTTGGTGGCAA
 CAGCAGAAGAGAAGTGTGCTGTGAGGAACTTTCTTCCAAGATAATGTCCAGTTTGAAGATGAAGGCTT
 TTCTAATTTGTTGTTGCTGGATAGAATTTTATATTACTGTAATGGTTGATTGACTTCTCA
 CCATATAATATTAATATCAGCCCAAAGTTAAATCACCACAGAGACCTTCCAGATTGGTCCAAAAGAAGA
 ATGAGCCCTAGGAAATGACTTCTTTATTTAACTTATTGTGAAAGTGTATCTTTTCCACACACT
 GAGCTTCAAGGAAGCACATTCTGATACCCTTCTACTATTGGCAACTCAATCACCAGCATTATTTCCAGT
 GTACTTGGGCATATTTCTTTGCCTTCTATGATCCGAAAAATTTGCAACTTAAACAAGACCTCTGGCAT
 TATTTTATGAAAACCTCAAAGCTTGTGAAAGTCTTAAAGTATATAGTTGTCTGAACAACAAGTTAGAAA
 GCTACTGGGAGAAATTTGCTTGTCTGCAATTCAGCTACACCGAACTTATGATAGTGAACCTTCTGAA
 CAACTCTCCCCACTATTATGCATAATTTCTGCACAAGAATAAACAGATTGCAAAAACAGAGTGTCTCAGT
 TCTGGAATGCCACTTTTGCCAAAGTGTATGATGTTGGTTTATCCTGAAGAGTTAAAACAGTACTAACACA
 AGCCAAACAAAAATTTCTGCTCCTGTGGCTGGTTGGAACTGTTGAAATGATGGAGGAATCCAGTGG
 CCATATTCTGATGGAACAGAAAATTCACAACTAAATGTGAAGATAAGTGGCATGGAGAGAAAAATCAAATG
 GAAAAAGAGATTCATTTTGGCACAACAAAGAATAAAAAAGAAAATATGAAACAGCAGCCAAACTGAA
 ACTTGAATCTTCGTTCTTTAAAAGTAAAGGGTGAATTTCTTTGGAAGAGGAAAAGTCTACTGACTTTGTG
 TTTATACCTCCAGAAGGAAAAGATGCAAAGGAAAAGAATTAACCTGATCATCAAAAAGAAATTTCTCAAAA
 CAAAGCGTGTGATATTCTGCCATGTATAATAATCTGGATGTTTCCCAAGATACTTTACTACTAGTA
 TAGTCAGGAAGAGCCTATGGAATTCCTACTTTAACAGAAAACCAAAGGAGATTCTAAGATGATGATT
 ACGGAGGAGCAAAATGGACAGTGACATTGTCTTCTCAAGATGTCACGGAAGACTGTGGTATGGCTGAAC
 ATCTTGAAAAGTCTCCCTTTTGAATAATGAGTGTGGTTCTTTGACAAAACAGTCCAGAAATGTCAAA
 CAGTAATAATGATGAAAGAAAAAAGCTTTAATTTTCAAGGAAAACATCAACTGAATGTGCATCTAGT
 ACAGAAAATCTTTCGTTGTCAGCAGTAGTTTCTAATACCAGTGTGCTGGAACCTCCCCATACC
 CTACAAGTCGGAGCAAACTTTTATTACTTTGGAGAAGTTTGTGTTTCAAGAAAATAGACCTTTTAGTCC
 ATCCCCCTTGAATAATTTTCACTCAACTGTTACAGTGAAAAATAACCAGGAAACCATGATTAACAGAT
 TTTCTACCAAAAGCAAAGCAAAGAGAAGGGACTTTTTCAAATCTGATTCTGAAAAAATAGTGAATGGAA
 CTAAGAGATCAAGCCGGAGAGCTGGTAAAGCTGAACAAACAGGGAATAAAAGGTCTAAGCCCTAATGAG
 ATCTGAGCCGGAGAAAAATACTGAGGAATCTGTTGAAGGCATTGTAGTCTTAGAAAAATAACCCACCTGGT
 TTGCTTAATCAACAGAAATGTGTGTGATGATAATCAGGTTTCACTTTCTGAATCTCAATGGAGCATGACA
 ATACAAAGCTTAAAGCAGCAACAGTGGAAAATGCTGTATTATTGGAACTAATACTGTAGAGGAGAAAA
 TGTAGAAATTAATTTGGAATCCAAGAGAATACACCCCAAGTGTAAATATCAGCAGATCAATGGTAAAT
 GAGGATAGTCAGGTTTCAAGTAACTCCAATCAGAAAACCTTACAGCGTCTTCAAGGCGACGTTCAGAAG
 TAGTAGAGTCTACCACTGAAAGCCAAGATAAGGAAAATAGTCATCAAAAAAGGAACGAGTAAGGAAGA
 AGAAAAACCTCTCAGAAGAGTCCATTGCATATAAAAGATGATGTGTTACCTAAACAAAAACTGATTGCT
 GAACAACTCTACAGGAGAAATTTAATTGAGAAAGGAAGTAAATTTACATGAGAAGACTCTTGGGAAACTA
 GTGCTAATGCAGAACTGAACAAAATAAAAAAAGGCAGACCCTGAGAACATTAAGTCTGAGGGGGATGG
 TACCCAGGACATTGTAGATAAGTCTCTGAGAACTAGTCAGAGGCCGAACACGGTATCAAACTAGAAGA
 GCATCTCAGGTTTGTCTTCCAGCATTGAAAACCTCAGAATCTGATAGTTCGGAGGCAAAAGAAAGGTT
 CTAGGAAGAAGAGATCTGAAAAATGAAAAACAAAAGCAATGAAAGTGTGACATTCAAGATCAAGAAGA
 GAAAGTGGTGAACAGGAATGTATAAAGCTGAAAATCAGTCACATGATTATAAAGCAACTTCTGAAGAA
 GATGTAAGCATAAAATCTCCGATTTGCGAAAAACAAGATGAAAGTAACTGTAATATGTCAGGATTCTA
 CAGTAACTTCAAGTTTGTGCAAGTTTCTGATGATTTACCAAATGTGTGAGGAAAAAATGAAACTAG
 CAAATATGCAGAATATCTTTTACAAGTCTACCTGTGCCAGAATCAAATCTAAGGACTAGAAATGCCATT
 AAGAGATTACATAAGCGAGACTTTTTGATAATTTGTAGTTTGGGAGAACTCCTCAAAAATAGGGATATCAG
 ATATTTCTTCGTTTTCAGAAAAACTTTTCAAACACTTGAATGCCAACACAAGAGAAGTAGGAGGGTGG
 GAGATCTAAAGTTGTGATTGCTGTGGGAAAAATCACAACCTCAGGAAAAGTCACTCATTGGGTTAAAG

AATACAGAAAATAATGACGTAGAGATTAGTGAAACAAAAAAGGCAGATGTGCAAGCACCTGTAAGCCCAT
CAGAACTTCTCAAGCTAATCCATATTCTGAAGGACAATTTTTAGATGAACATCATAGTGTGAATTTTCA
TTTGGTCTCAAAGAGGATAATGATACTATTAATGATTCATTAATTGTTTCTGAAACCAATCAAAAGAA
AACACTATGCAAGAATCTCTTCTTCTGGAATAGTAACTTTAGAGAGGAAATTTGTGATATGGATTCTA
GTGAAGCAATGTCTCTTGAAAGCCAGGAGTCACCTAATGAAAATTTAAAAGTGTGGCCCGTGTTAGG
AGACTCGAAAAATGTTTCACAGGAATCTTTGGAGACAAAAGAAGAAAAACCAGAAGAAACCCAAAAATG
GAACTGAGTCTAGAGAATGTTACTGTTGAAGGAAATGCATGTAAGTAACAGAATCCAATCTAGAGAAAG
CAAAAACCTATGGAATTGAATGTAGGAAAATGAAGCTAGCTTTCATGGACAAGAGAGAACCAAAAACCTGGTAT
TTCTGAAGAAGCAGCAATAGAAGAAAATAAAAGAAATGATGACTCTGAAGCAGACACAGCTAAAAGTGAAT
GCCAAAGAAGTAGCAACTGAGGAATTTAATTCAGATATTAGTCTTTCTGATAACTACACCTGTAAAAAT
TGAATGCTCAAAGTGAATTTCTGAACAAACAGCAGCTGGGGAAGTATAGTGGAGGAAATGATGTATCTGA
TCTACACTCATCTGAAGAAACGAATACCAAAAATGAAAAAATGAAGAAATGATGATCGGCGAGGCAATG
GCTGAAACTGGCCATGATGGTGAACAGAGAATGAGGGCATAACTACCAAAACCTCAAAGCCTGATGAAG
CTGAAACAAACATGTTGACTGCAGAAATGGACAACCTTTGTTTGTGACACAGTTGAAATGAGCACTGAAGA
AGGAATCATTGACGCTAATAAACTGAAACAAATACTGAGTATAGTAAATCTGAAGAAAAATTAGATAAC
AATCAAAATGGTAATGAAAGTGATATTTACAGGAAGATCACCATACTTCACAGAAAAGTGGAGGAACCAT
CACAGTGTCTGGCATCTGGAACAGCTATCTCTGAGCTAATAATAGAAGACAATAATGCATCTCTCAAAA
ACTAAGGGAAGTGTATCCTTCACTTGTGTGAGCAATGACAGTCCCTAGTGGCATGCAGACACGCTGTGTC
TGGTCTCCTTTGGCTTCTCCGTCTACGAGCATTTTAAGAGAGGACTAAAAAGATCCCAAGAAGATGAAA
TCTCATCACCTGTTAATAAGGTTTCGCCGTGTCTCCTTTGCAGATCCAATATACCAAGCAGGATTGGCAGA
TGACATTGATAGACGGTGTCTATTGTTAGGTCCATTCTTCCAATAGTTCTCCCATAGGAAAAAGTGT
AAAACCTTCTCTACTACACAATCTAAGCATAATACCCTTCAGCCAAAGGATTTCTGTCCCAGGATCAC
GTAGCCCTAAAATTAAGAGCTCAAAGAAGTGTTAATTTTCAGAAATGGCCAAAGAATCCATACCATGCCC
AACAGAAAAGTGTTTACCCACCATTGGTGAAGTGTGGCACCAGTTGACATCATTTTACCTCAGATTACA
TCAAACATGTGGGCAAGAGGCCTGGGACAACCTATTAGAGCTAAGAATATAAAAACCTATTGGTGATTTGA
GTAATCTTACAGCATCTGAAATAAAAACCTTCTCTATCCGTTCTCCAAAAGTGTCCAATGAAAAAGGC
TCTCAGAAATATCATGAGCAGCAGGTGAAGACTCGTGGACTAGAAGAGATTCCAGTTTTTGATTTTCT
GAAAAACAGTAAATGGAATAGAAAATAAATCTTTGTACCTGATGAAGAAAGACTTGTCTCAGATATAA
TTGATCCTGTTGCTTTAGAAATCCATTATCCAAAACCTTCTGGCACAGATTAGTGCTCTTGCTCTTCA
GCTGGATTGAGAAGATCTTCATAATTATCAGGAAGCCAACCTTTGAAATGCACGAGAACTAAGTTGT
ATGGCAAACCTCTGTAATAAAAAATCTACAGTCACGTTGGAGATCACCATCCCATGAAAATCTATT

ACGCGTACGCGGCCGCTCGAG – GFP Tag – GTTTAA

Protein Sequence:

>RG223158 representing NM_018151
 Red=Cloning site Green=Tags(s)

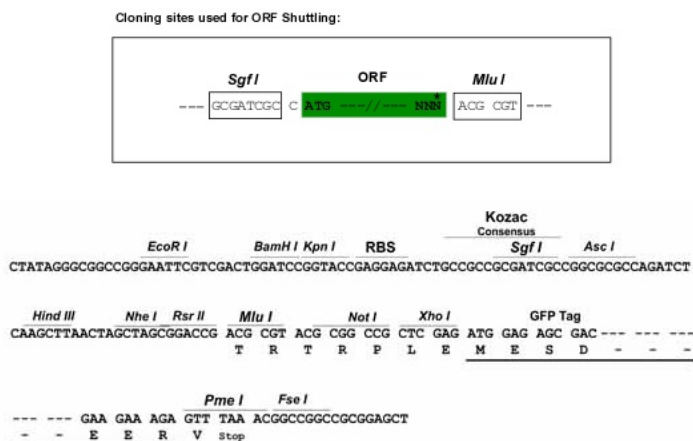
```

MTARGQSPLAPLLETLEDPSASHGGQTDAYLTLTSRMTGEEGKEVITEIEKKLPRLYKVLKTHISSQNSE
LSSAALQALGFCLYNPKITSELSEANALELLSKLNDTIKNSDKNVRTRALWVISKQTFPSEVVGKMVSSI
IDSLEILFNKGETHSAVVDFEALNVIVRLIEQAPIQMGEAEVRWAKLVIPLVVHSAQKVHLRGATALEMG
MPLLLQKQEQEIASITEQLMTTKLISELQKLFMSKNETYVLKLVPLFVKLLGRTLHRSGSFINSLLQLEEL
GFRSGAPMIKKIAFIAWKSLIDNFALNPDIILCSAKRLKLLMQPLSSIHVRTETLALTKLEVWYLLMRLG
PHLPANFEQVCVPLIQSTISIDSNASPQNSCHVATSPGLNPMPVHKGASSPYGAPGTPRMNLSNLGG
MATIPSIQLLGLLEMLLHFLGPEALSFQKQKLVLSLEPLEHPLISSPSFFSKHANTLITAVHDSFVAVG
KDAPDVVVSIAWKELISLVKSVTESGNKKEKPGSEVLTLLKLSLESIVKSEVFPVSKTLVMEITIKGLP
QKVLGSPAYQVANMDILNGTPALFLIQLIFNNFLECGVSDERFFLSLESVGCVLSGPTSPLAFSDSVLN
VINQNAKQLENKEHLWKMWVIVTPLTELINQNEVNQGDALHNFSAIYGALTPVNHIFSEQRFPVAT
MKTLLRWTSEL YRAFARCAALVATAEENL CCEELSSKIMSLEDEGFSNLLFVDRIIYIITVMDCIDFS
PYNIKYQPKVKSQRPSDWSKKKNEPLGKLTSLFKLIVKVIYSFHTLSFKEAHSOTLFTIGNSITGISS
VLGHISLPSMIRKIFATLTRPLALFYENSKLDEVPKVSCLNNKLEKLLGEEIIACLQFSYTGTYDSELLE
QLSPLLCCIIFLHKNKQIRKQSAQFWNATFAKVMMLVYPEELKPVLTQAKQKFLLLLPGLTVEEMEESSG
PYSDGTENSQNLNVKISGMERKSNGKRDSDLAQTKNKNKMPAAKLLKLESSSLVKVGEILLEEKSTDFV
FIPPEGKDAKERILDTHQKEVLKTKRCDIPAMYNNLDVSDTLFTQYSQEEPMEIPTLTRKPKEDSKMMI
TEEQMDSDIVIPQDVTEDCGMAEHLEKSSLSNNECGSLDKTSPEMSNSNNDERKKALISSRKTSTECASS
TENSFVSSSSSVNNTT VAGTPPYPTSRRTQFITLEKFDGSENRPFPSPSPLNNISSVTVKNNQETMIKTD
FLPKAKQREGTFSKSDSEKIVNGTKRSSRRAGKAEQTGNKRKSKPLMRSEPEKNTESVEGIVVLENNPPG
LLNQTECVSDNQVHLSESTMEHDNTKLKAATVENAVLLETNTVEEKNEINLESKENTPPVVISADQMVN
EDSQVITPNQKTLRRSSRRRSEVVESTTESQDKENSHQKERRKEEKLQKSPHLIKDDVLPKQKLI
EQTLQENLIEKGSNLHEKTLGETSANAETE QNKKKADPENIKSEGDGTQDIVDKSSEKLVGRTRYQTRR
ASQGLLSSIENSESDSSEAKEEGSRKKRSGKWKNSNESVDIQDQEEKVVKQECIKAENQSHDYKATSEE
DVSIKSPICEKQDESNTVICQDSTVTSDLLQVPDDL PNVCEEKNETSKYAEYSFTSLPVESNLRTRNAI
KRLHKRDSFDNCSLGESSKIGISDISSLSEKTFQTLQCQHKRSRRVRRSKGDCGCCGKSQPKESLIGLK
NTENNDVEISETKKADVQAPVSPSETSQANPYSEGQFLDEHHSVNFHLGLKEDNDTINDSLIVSETKSKE
NTMQESLPSGIVNFREEICDMSSEAMSLESQESPNENFKTVGPCLGDSKNVSQESLETKEEKPEETPKM
ELSL ENVTVEGNACKVTE SNLEKAKTMELNVGNEASFHGQERTKTGISEEAAIEENKRNDSEADTAKLN
AKEVATEEFNSDISLSDNTTPVKLNAQTEISEQTAAGELDGGNDVSDLHSSEETNTKMKNNEEMMIGEAM
AETGHDGETENEGITTKT SKPDEAETNMLTAEMDNFVCDT VEMSTEEGIIDANKTETNTEYSKSEEKLDN
NQVMESDILQEDHHTSQKVEEPSQCLASGTAISELIIEDNNASPQKLRLEDPSLVSANDSPSGMQTRCV
WSPLASPSTSILKRGLKRSQEDEISSPVNKVRRVSFADPIYQAGLADDIDRRCSI VRSHSSNSSPIGKSV
KTSPTTQSKHNNTSAKGLSPGSRSPKFKSSKKCLISEMAKESIPCPTESVYPPLVNCVAPVDIILPQIT
SNMWARGLQGLIRAKNIKTIGDLSTLTASEIKTLP IRSPKVS NVKALRIYHEQQVKTRGLEEIPVFDIS
EKTVNGIENKSLSPDEERLVSDIIDPVALEIPLSKNLLAQISALALQLDSEDLHNYSGS QLFEMHEKLS
MANSVIKNLQSRWRSPSHENSI
  
```

TRTRPLE - GFP Tag - V

Restriction Sites:

SgfI-MluI

Cloning Scheme:


ACCN: NM_018151

ORF Size: 7416 bp

OTI Disclaimer: Due to the inherent nature of this plasmid, standard methods to replicate additional amounts of DNA in E. coli are highly likely to result in mutations and/or rearrangements. Therefore, OriGene does not guarantee the capability to replicate this plasmid DNA. Additional amounts of DNA can be purchased from OriGene with batch-specific, full-sequence verification at a reduced cost. Please contact our customer care team at custsupport@origene.com or by calling 301.340.3188 option 3 for pricing and delivery.

The molecular sequence of this clone aligns with the gene accession number as a point of reference only. However, individual transcript sequences of the same gene can differ through naturally occurring variations (e.g. polymorphisms), each with its own valid existence. This clone is substantially in agreement with the reference, but a complete review of all prevailing variants is recommended prior to use. [More info](#)

OTI Annotation: This clone was engineered to express the complete ORF with an expression tag. Expression varies depending on the nature of the gene.

Components: The ORF clone is ion-exchange column purified and shipped in a 2D barcoded Matrix tube containing 10ug of transfection-ready, dried plasmid DNA (reconstitute with 100 ul of water).

Reconstitution Method:

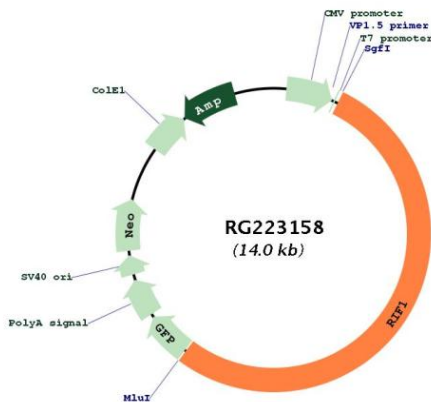
1. Centrifuge at 5,000xg for 5min.
2. Carefully open the tube and add 100ul of sterile water to dissolve the DNA.
3. Close the tube and incubate for 10 minutes at room temperature.
4. Briefly vortex the tube and then do a quick spin (less than 5000xg) to concentrate the liquid at the bottom.
5. Store the suspended plasmid at -20°C. The DNA is stable for at least one year from date of shipping when stored at -20°C.

RefSeq: [NM_018151.5](#)

RefSeq Size: 8383 bp
 RefSeq ORF: 7419 bp
 Locus ID: 55183
 UniProt ID: [Q5UIP0](#)
 Cytogenetics: 2q23.3

Gene Summary: This gene encodes a protein that shares homology with the yeast telomere binding protein, Rap1 interacting factor 1. This protein localizes to aberrant telomeres may be involved in DNA repair. Alternate splicing results in multiple transcript variants. [provided by RefSeq, Apr 2010]

Product images:



Circular map for RG223158