

Product datasheet for **RG223154**

HOMER2 (NM_199330) Human Tagged ORF Clone

Product data:

Product Type:	Expression Plasmids
Product Name:	HOMER2 (NM_199330) Human Tagged ORF Clone
Tag:	TurboGFP
Symbol:	HOMER2
Synonyms:	ACPD; CPD; DFNA68; HOMER-2; VESL-2
Mammalian Cell Selection:	Neomycin
Vector:	pCMV6-AC-GFP (PS100010)
E. coli Selection:	Ampicillin (100 ug/mL)
ORF Nucleotide Sequence:	>RG223154 representing NM_199330 Red=Cloning site Blue=ORF Green=Tags(s)

TTTTGTAATACGACTCACTATAGGGCGGCCGGAATTCGTCGACTGGATCCGGTACCGAGGAGATCTGCC
GCC**CGATCGC**C

ATGGGAGAACAGCCCATCTTCACCACCCGAGCGCATGTCTTCCAGATTGACCCCAACACCAAGAAGAACT
GGATGCCTGCGAGCAAGCAGGCGGTACCGTTTCTACTTCTATGATGTCACAAGGAACAGCTATCGGAT
CATCAGTGTGGACGGAGCCAAGGTGATCATAAACAGCACAATCACACCGAATATGACCTTACCAAAAACG
TCACAGAAGTTTGGCAGTGGCCGACAGCAGACCAACACAGTGTGGTTGGGTTTCTCTGAGC
AGCAGCTGACAAAGTTTGCAGAGAAATCCAGGAGGTGAAAGAAGCTGCCAAGATAGCCAAGACAAGAC
GCAGGAGAAAATCGAGACCTCAAGTAATCATTCCAAGAATCTGGGCGTGAAACCCCATCTTCTACTCAG
GCATCCAGTGTCACGGGACGGACGATGAAAAGGCCTCTCACGCCGGTCCAGCCAACACACACCTGAAGT
CTGAGAATGACAAGCTGAAGATTGCCTTGACGCAGAGCGCAGCCAACGTGAAGAAGTGGGAGATCGAGCT
GCAGACCTTCGGGAGAGCAATGCACGGCTGACCACAGCACTGCAGGAGTCGGCAGCCAGTGTGGAGCAG
TGAAGAGGCAGTTCTCCATCTGCCGTGATGAGAATGACCGGCTCCGCAACAAGATTGATGAGCTGGAAG
AACAAATGCAGTGAGATCAACAGAGAGAAGGAGAAGAACACGCAGCTGAAGAGGAGGATCGAGGAGCTGGA
GGCAGAGCTCCGAGAAAAGGAGACAGAGCTGAAAGATCTCCGAAAACAAAGTAAATCATACTCAGCTC
ATGTCAGAGTGCGAATATGTCTCTGAGAAGCTAGAGCGGCAGAGAGACAATCAAACCTGGAAGACA
AAGTGCCTTCTTAAAGACAGACATTGAGGAGAGCAAATACCGACAGCGCCACCTGAAGGTGGAGTTGAA
GAGCTTCTGGAGGTGCTGGACGGGAAGATTGACGACCTGCATGACTTCCGCCGAGGGCTCTCAAGCTG
GGCACCATAAC

ACCGTACGCGGCCGCTCGAG - GFP Tag - GTTTAA



[View online »](#)

Protein Sequence: >RG223154 representing NM_199330
 Red=Cloning site Green=Tags(s)

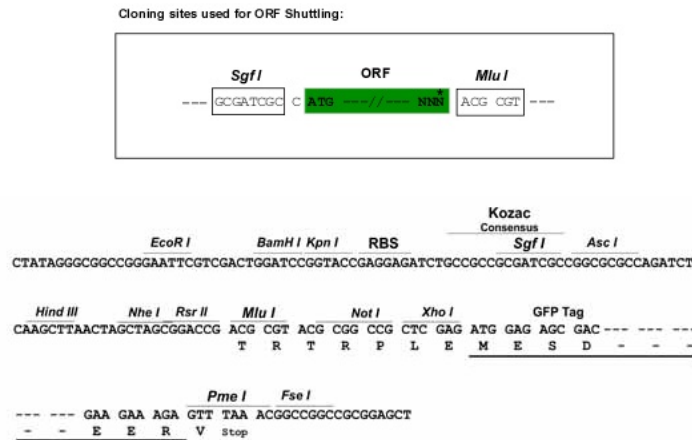
MGEQPIFTTRAHVFDIDPNTKKNWMPASKQAVTVSYFYDVTRNSYRIISVDGAKVIINSTITPNMTFTKT
 SQKFGQWADSRANTVFGGLFSSEQQLTKFAEKQVEKAAKIAKDKTQEKIETSSNHSQESGRETPSSTQ
 ASSVNGTDDEKASHAGPANTHLKSENDKLIKIALTQSAANVKKWEIQLTLRESNARLTTALQESAASVEQ
 WKRQFSICRDENDRLRNKIDEEEQCEINREKENTQLKRRIEELEAELREKETELKDLRKQSEIIPQL
 MSECEYVSEKLEAAERDNQNLDEKVRSLKTDIEESKYRQRHLKVELKSFLEVLGKIDDLHDFRRGLSKL
 GTDN

TRTRPLE - GFP Tag - V

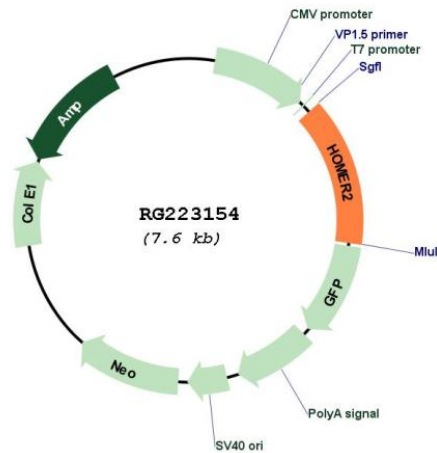
Restriction Sites:

SgfI-MluI

Cloning Scheme:



Plasmid Map:



ACCN:

NM_199330

ORF Size:	1062 bp
OTI Disclaimer:	The molecular sequence of this clone aligns with the gene accession number as a point of reference only. However, individual transcript sequences of the same gene can differ through naturally occurring variations (e.g. polymorphisms), each with its own valid existence. This clone is substantially in agreement with the reference, but a complete review of all prevailing variants is recommended prior to use. More info
OTI Annotation:	This clone was engineered to express the complete ORF with an expression tag. Expression varies depending on the nature of the gene.
Components:	The ORF clone is ion-exchange column purified and shipped in a 2D barcoded Matrix tube containing 10ug of transfection-ready, dried plasmid DNA (reconstitute with 100 ul of water).
Reconstitution Method:	<ol style="list-style-type: none">1. Centrifuge at 5,000xg for 5min.2. Carefully open the tube and add 100ul of sterile water to dissolve the DNA.3. Close the tube and incubate for 10 minutes at room temperature.4. Briefly vortex the tube and then do a quick spin (less than 5000xg) to concentrate the liquid at the bottom.5. Store the suspended plasmid at -20°C. The DNA is stable for at least one year from date of shipping when stored at -20°C.
RefSeq:	NM_199330.3
RefSeq Size:	2005 bp
RefSeq ORF:	1065 bp
Locus ID:	9455
UniProt ID:	Q9NSB8
Cytogenetics:	15q25.2
Protein Families:	Druggable Genome
Gene Summary:	This gene encodes a member of the homer family of dendritic proteins. Members of this family regulate group 1 metabotropic glutamate receptor function. The encoded protein is a postsynaptic density scaffolding protein. Alternative splicing results in multiple transcript variants. Two related pseudogenes have been identified on chromosome 14. [provided by RefSeq, Jun 2011]