

Product datasheet for **RG223149**

TTC39B (NM_152574) Human Tagged ORF Clone

Product data:

Product Type:	Expression Plasmids
Product Name:	TTC39B (NM_152574) Human Tagged ORF Clone
Tag:	TurboGFP
Symbol:	TTC39B
Synonyms:	C9orf52
Mammalian Cell Selection:	Neomycin
Vector:	pCMV6-AC-GFP (PS100010)
E. coli Selection:	Ampicillin (100 ug/mL)



[View online »](#)

ORF Nucleotide Sequence:

>RG223149 representing NM_152574
 Red=Cloning site Blue=ORF Green=Tags(s)

TTTTGTAATACGACTCACTATAGGGCGGCCGGAATTCGTCGACTGGATCCGGTACCGAGGAGATCTGCC
 GCC**GCGATCGCC**

ATGGCGCTCTTAGGCAGCCGAGCGGAGCTGGAAGCGGACGAGGACGTTTTCGAAGATGCCTTGAAACCA
 TCTCAATATCTTCTCACTCAGATATGGCAACAAGCAGCCTTCACTTTGCATCATGTGATACACAACAGGC
 GCCCAGACAGCGCGGAGCGTCTACTGTCAAGCAGTTCATCATCAACCAAGGTGGATCTCAAGAGTGGCCTC
 GAAGAATGTGCTGTGGCATTGAACCTATTTCTAAGCAACAATTTACAGACGCCTTAGAATTGCTTCGCC
 CCTGGGCTAAGGAGAGTATGTACCATGCCTTGGGCTACAGTACCATTGTGGTGTTCAGGCTGTCCTGAC
 CTTGAGCAACAGGACATCCAGAACGGCATTCTGCCATGAAGGACGCTTACAAACCTGCCAAAAATAC
 AGGAAAAATACACAGTTGTAGAATCTTCTCAAGTCTTCTTCTAGAGGATCCCTGGAGCAACTGAGTG
 AAGAGGAAATGCATGCTGAAATCTGTTATGCCGAGTGTCTCTACAGAAAGCTGCACTCACGTTTGTGCA
 GGATGAAATATGATCAACTTCATCAAAGTGGACTCAAATTAGAACAAGTTACCAATATATAAAGAA
 TGCTTTCTATCCTGCATGAAATTCAGAAGAACAACCTCAGCAGGAATCTTCTATGAGTTGAAGGGG
 GTGTCAAGCTTGGCAGTGGGCGCTTAAATTTGATGCTGTCCCTTTTACCAGCAAGGATTATCAGACTACT
 AGAATTTATTGGATTTTCTGGGAATAGGGAGTTGGGCTCCTGCAGTTACGTGAAGGTGCTTCAGGAAGG
 AGCATGAGGTCTGCAGTGTGCTGCTTAACCATCTTAGCTTTTCACTTACATCTCCCTAATACTTGGTA
 CAGGAGAAGTGAATGTTGCGGAAGCAGAGCGTCTCCTGGCACCCTTCTCCAGCAGTTTCCAATGGCTC
 ACTCGTGTGTTTTATCATGCCGAATAGAGTTGCTGAAAGGGAATCTTGAAGAGGCACAAGAAGTATTT
 CAAAAATGCGTTTCAGTTCAGAAGAATGGAAACAGTTTACCATCTCTGCTACTGGGAGCTAATGTGGA
 TTAATGTTTTCCAACAAAACCTGGATGCAGGCATATTACTATTAGATCTGCTTTGCAAGAGAGTAAATG
 GTCCAAGGCAACTTATGTGTTCTTGAAAGCAGCAATTTGAGTATGCTTCCAGAGGAGGATGTAGTAGCA
 ACGAATGAGAATGTGGAACCTTTATTCAGACAGGTGGACAGCTTGAAGCAGAGAATTGCCGGAAATCTA
 TCCTACTGAGAAGTTGCTGTGAGGAAGGCTCGGCGTACTCCGCTCCTTACCTGCACCTGTGAAGCT
 CATCTTACCTGCCCTGGAATGATGTATGTCTGGAATGGTTTTTCAATAGTGAGCAAAAAGAAAAGACCTT
 TCTGAAAATCTGTAGTAACTGTTGAAAAGCTGAGGCAGCTTACAAAGTCAAATTTTAAACAGCTTCT
 CTGTGGATGATGAGTCTTAGTGAAGTACTTAAAGGATGTTGCCTCAAGAACTTACAGCGGCCCTTGCA
 AGCTGAACTATGTTACAATCATGTTGTGAAAAGTAAAAGCTACTGAAGTATGACCCTACCTAGTGCCG
 TCACTCTATTTGAATTGCATCTTTGTATAAAAGCCAGGGGAAATTGACAAGGCCATAAAGTTCTAG
 AAAGTCAAGGAAACAACCTACAAAGATTACTCCCTGGAGTCCAGACTACACTTCAAGATTCAGGCAGCTCT
 TCACCTCTGGAGAAAACCTTCTCAGAT

ACGCGTACGCGGCCGCTCGAG - GFP Tag - GTTTAA

Protein Sequence:

>RG223149 representing NM_152574
 Red=Cloning site Green=Tags(s)

MALLGSRAELEADEDVFEDELETISISSHSDMATSSLHFASCDTQQAPRQRGASTVSSSSSTKVDLKSGL
 EECAVALNLFSLSNKFTDALELLRPWAKESMYHALGYSTIVVLQAVLTFEQQDIQNGISAMKDALQTCQKY
 RKKYTVVESFSSLLSRGSLEQLSEEEMHAEICYAECLLQKAALTFVQDENMINFIKGLKIRTSYQIYKE
 CLSILHEIQKNLQQEFFYEFEGGVKLGSGAFNMLSLLPARIIRLLEF IGFSGNRELGLLQLREGASGR
 SMRSALCCLTILAFHTYISLILGTGEVNVAEERLLAPFLQQFPNGSLVLFYHARIELLKGNLEEAQEVF
 QKCVSVQEEWKQFHHLCYWELMWINVVQQNMQAYYYSDDLCKESKWSKATYVFLKAAILSMLPEEDVVA
 TNENVVTLFRQVDSLKQRIAGKSIPTKFAVRKARRYSASLPAPVKLILPALEMMYVWNGFSIVSKRKDL
 SENLLVTVEKAEALQSQNFNSFSVDDECLVKLLKGCCLKNLQRPLQAELOCYNHVVSEKLLKYDHYLVP
 FTLFELASLYKSQGEIDKAIKFLETARNNYKDYSLESRLHFRIQAALHLWRKPSSD

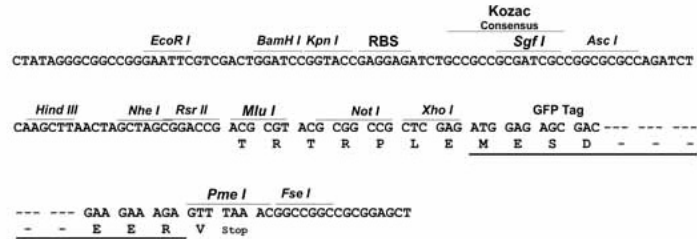
TRTRPLE - GFP Tag - V

Restriction Sites:

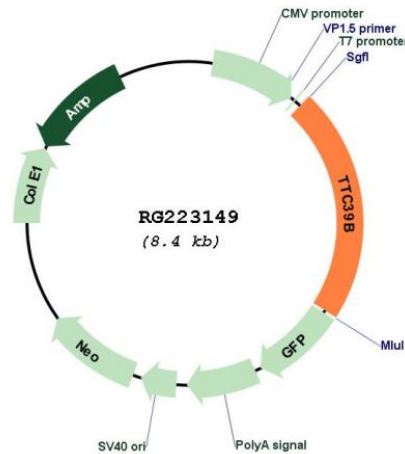
Sgfl-MluI

Cloning Scheme:

Cloning sites used for ORF Shutting:



Plasmid Map:



ACCN: NM_152574
 ORF Size: 1848 bp

OTI Disclaimer:	The molecular sequence of this clone aligns with the gene accession number as a point of reference only. However, individual transcript sequences of the same gene can differ through naturally occurring variations (e.g. polymorphisms), each with its own valid existence. This clone is substantially in agreement with the reference, but a complete review of all prevailing variants is recommended prior to use. More info
OTI Annotation:	This clone was engineered to express the complete ORF with an expression tag. Expression varies depending on the nature of the gene.
Components:	The ORF clone is ion-exchange column purified and shipped in a 2D barcoded Matrix tube containing 10ug of transfection-ready, dried plasmid DNA (reconstitute with 100 ul of water).
Reconstitution Method:	<ol style="list-style-type: none">1. Centrifuge at 5,000xg for 5min.2. Carefully open the tube and add 100ul of sterile water to dissolve the DNA.3. Close the tube and incubate for 10 minutes at room temperature.4. Briefly vortex the tube and then do a quick spin (less than 5000xg) to concentrate the liquid at the bottom.5. Store the suspended plasmid at -20°C. The DNA is stable for at least one year from date of shipping when stored at -20°C.
RefSeq:	NM_152574.1 , NP_689787.1
RefSeq Size:	2428 bp
RefSeq ORF:	2049 bp
Locus ID:	158219
UniProt ID:	Q5VTQ0
Cytogenetics:	9p22.3
Gene Summary:	Regulates high density lipoprotein (HDL) cholesterol metabolism by promoting the ubiquitination and degradation of the oxysterols receptors LXR (NR1H2 and NR1H3). [UniProtKB/Swiss-Prot Function]